



# Emergency Preparedness and Response Weekly Situation Report

**Week 8: 15<sup>th</sup> February 2026 to 22<sup>nd</sup> February 2026**  
Data as reported by: 1700 hrs (EAT), 22<sup>nd</sup> February 2026

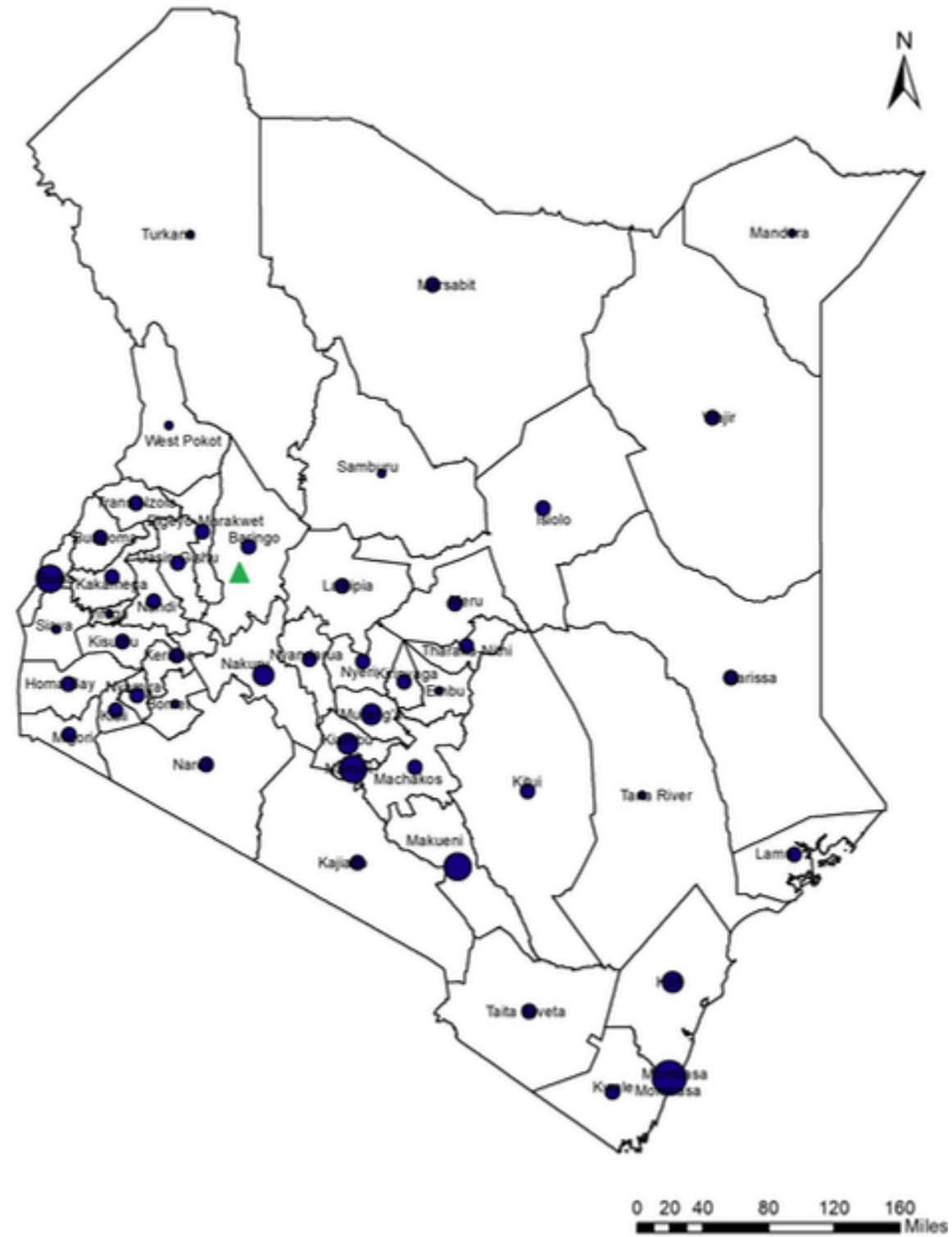
<b>0</b> New Events	<b>0</b> Ongoing Events	<b>2</b> Outbreaks	<b>0</b> Humanitarian Crisis
------------------------	----------------------------	-----------------------	---------------------------------

<b>1</b> Grade 3	<b>0</b> Grade 2	<b>0</b> Grade 1	<b>1</b> Ungraded
---------------------	---------------------	---------------------	----------------------

# Current Health Emergencies in Kenya 2026

## Key

- ▲ Measles - cases (115), death (0), sub counties (1)
- Mpox - cases (1,034), deaths (15), counties (38)





## Summary of Health Emergencies in Kenya

Event	Total Cases	Cases Confirmed	Deaths	Case Fatality Rate	Case Contacts	Counties	Start of Reporting Period	Grade	
<b>Mpox</b>	<b>1,034</b>	<b>1,034</b>	<b>15</b>	<b>1.3%</b>	<b>1376</b>	<b>38</b>	<b>31 July 2024</b>	<b>Grade 3</b>	<b>Ongoing</b>

Twenty seven new cases reported in Epi week seven from six counties: Mombasa (14), Busia (5), Makueni (3), Nairobi (2), Homa Bay (2) and Trans Nzoia (1). There are 493 active cases, with 74 patients receiving facility care and 419 under home-based care. A total of 2,656 samples tested with a positivity rate of 39%. Over 8.8 million travellers have been screened at twenty-six official points of entry, including airports, seaports, and land border crossings.

<b>Measles</b>	<b>115</b>	<b>4</b>	<b>0</b>	<b>0%</b>	<b>N/A</b>	<b>1</b>	<b>2024 - 2025</b>	<b>Ungraded</b>	<b>Ongoing</b>
----------------	------------	----------	----------	-----------	------------	----------	--------------------	-----------------	----------------

From January 2026 a total of 87 reported from Tiaty East sub county, Baringo county. The majority of cases, 83 (72%) are aged  $\geq 10$  years. More than half are male 79 (69%).

Overview of key public health emergencies



**27** New Cases

**526** Cases Recovered

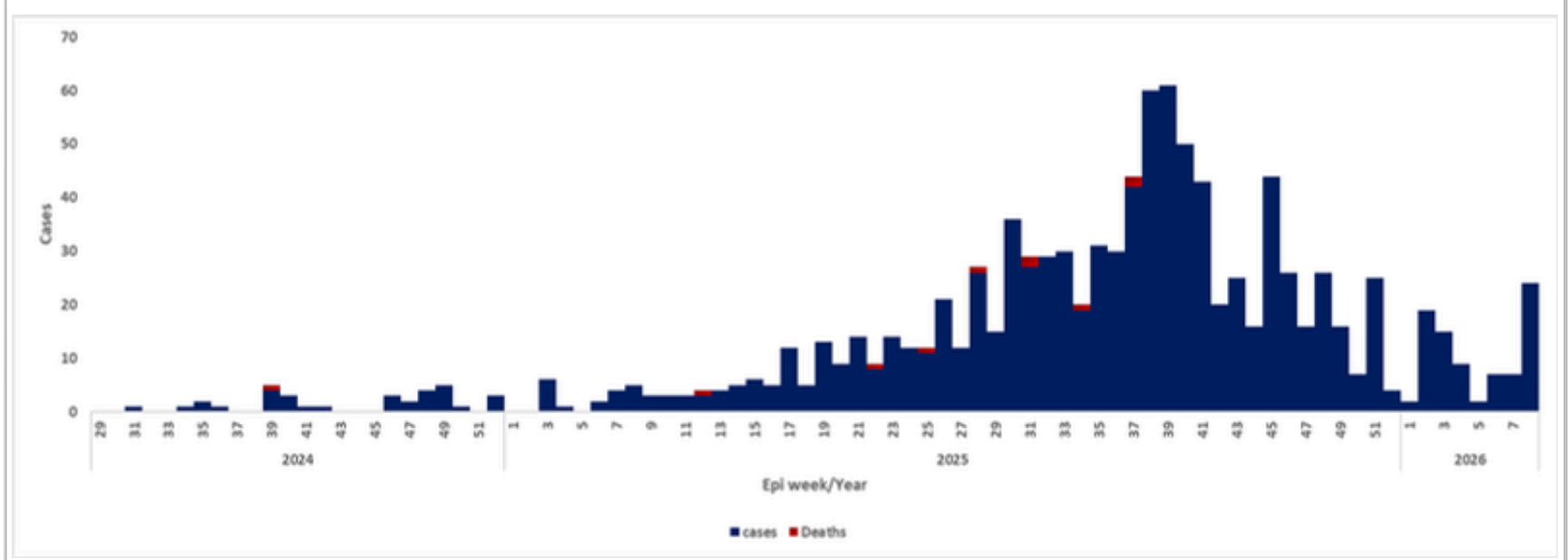
**1034** Confirmed Cases

**15** Deaths

- In 2026, **58 confirmed cases have been reported in eight counties:** Busia, Mombasa, Nairobi, Makueni, Bungoma, Murang’a, Migori, Homa Bay, and Elgeyo Marakwet.
- **Twenty seven new cases** were reported in the reporting period from **six counties: fourteen** in Mombasa, **five** in Busia, **three** in Makueni, **two each** in Nairobi and homabay and **one** Trans nzoia.
- Ongoing transmission with wide geographic spread; sustained surveillance, testing, and contact follow-up remain critical

**Epi-curve of mpox cases, in Kenya, July 2024 - February 2026**

Outbreak remains active with a peak observed from July Epi week 28, 2025 - 41, but there has been a continuous decline of cases from week 43 (from 38 counties to six counties in 2026).



**Response activities**

- Active case search ongoing in the affected areas
- Contact tracing ongoing on the all active cases
- Risk communication and community engagement activities ongoing in the affected areas
- Case management of patients ongoing in the designated isolation and treatment centres
- Regular coordination meetings ongoing through the National PHEOC (NPHI)

**Challenges**

- Stigma limiting early reporting
- Low risk perception of the disease in the community due to low perceived vulnerability and lack of direct experience

Ungraded **Measles Outbreak** 1 county

**115** Cases | **4** Laboratory Confirmed | **0** Death

- From January 2026 a total of **87 cases** have been reported from Tiaty East sub county, Baringo county.
- This outbreak was confirmed in November 2025.
- The majority of cases, **83 (72%)** are aged  $\geq 10$  years
- More than half are male **79 (69%)**.

Epi curve of measles cases in Tiaty East, Baringo county November 2025 to February 2026

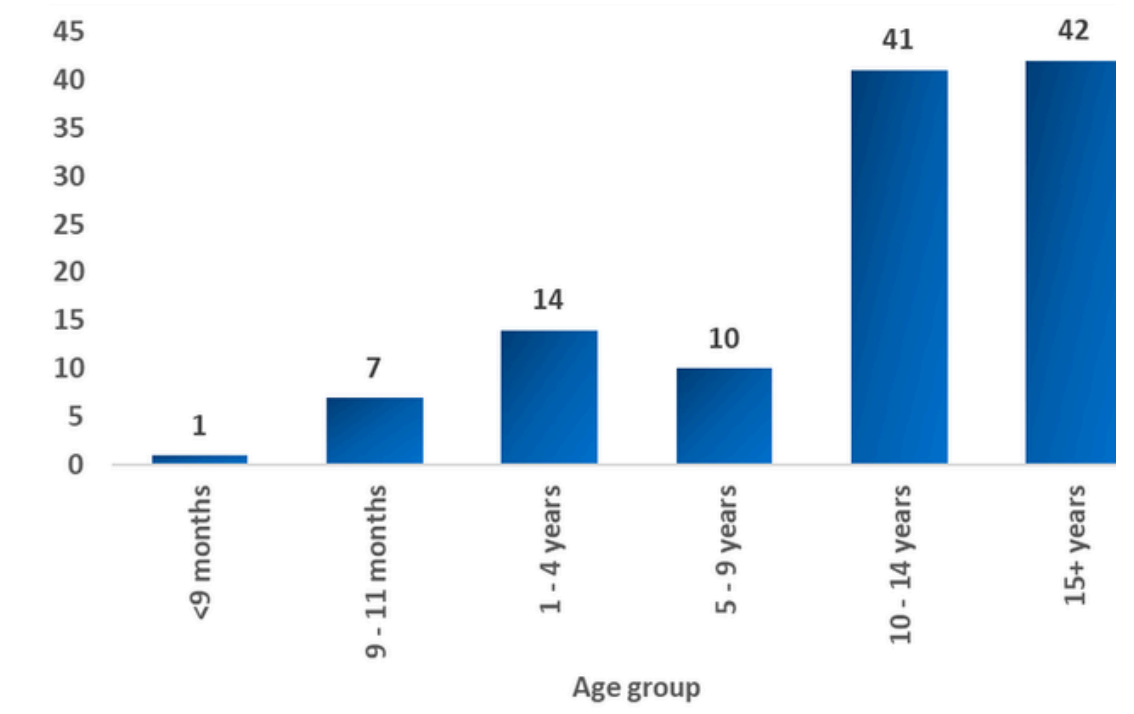
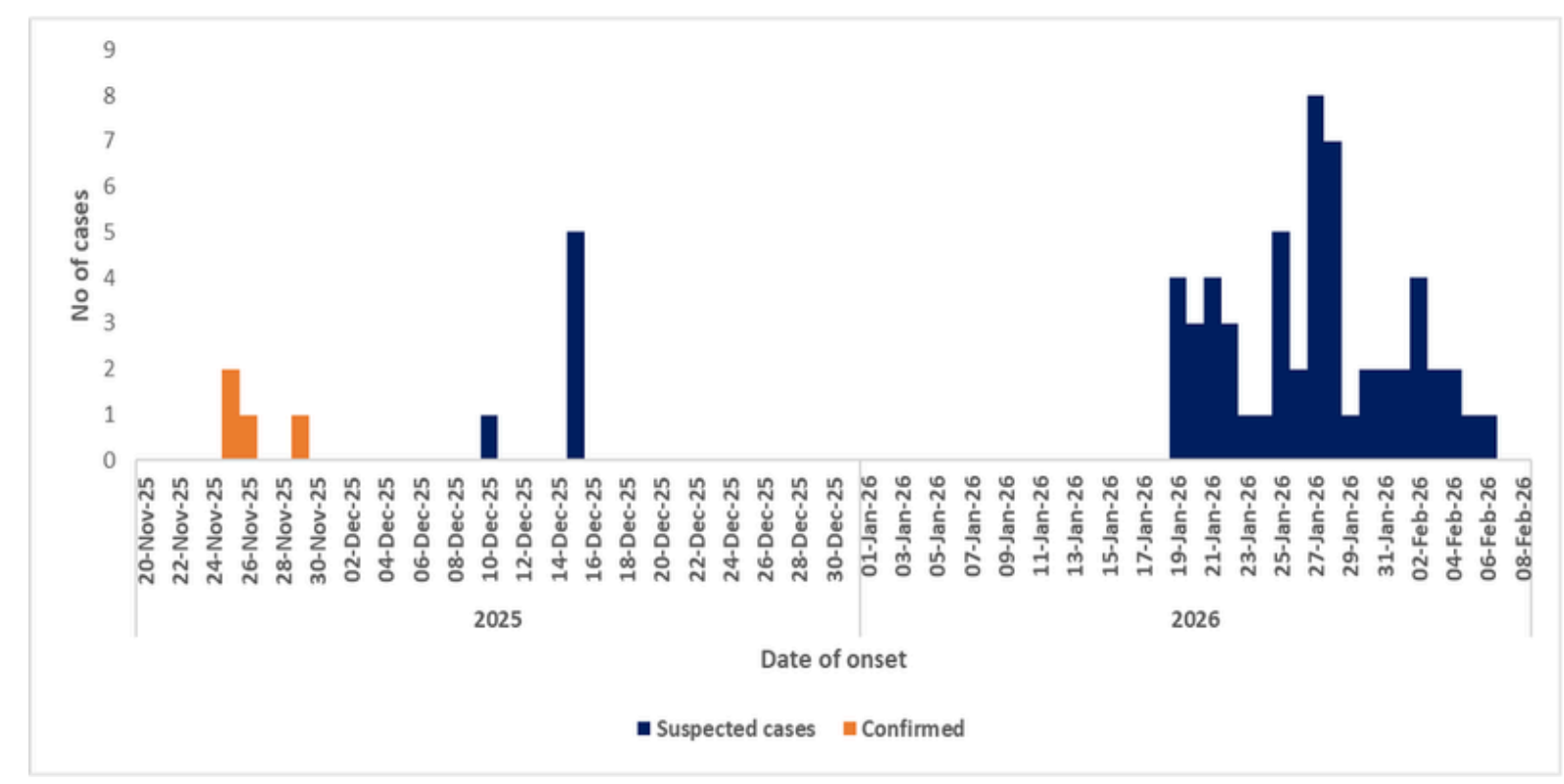
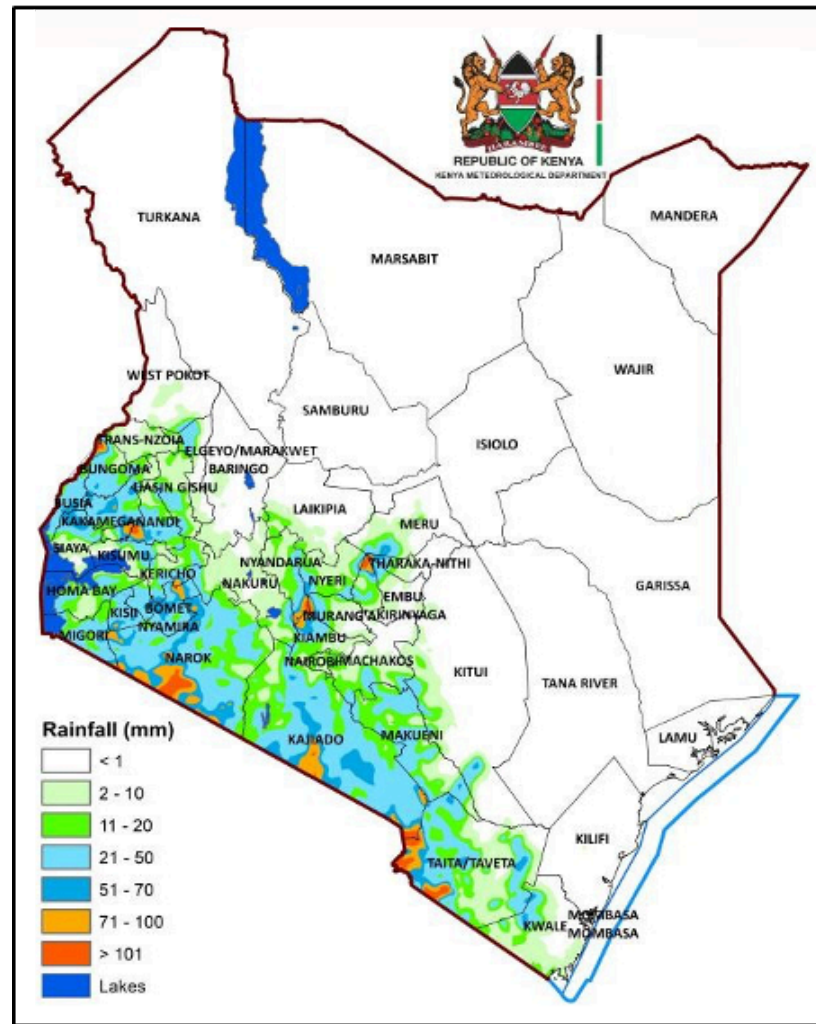


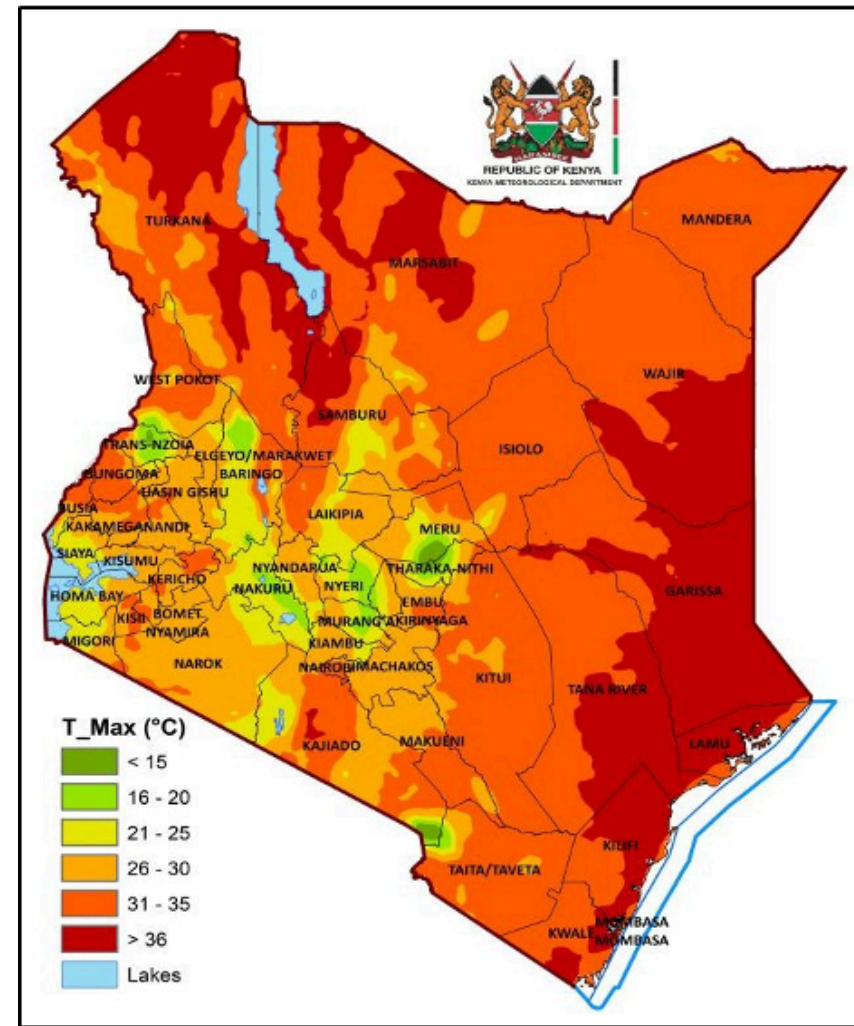
Photo by : Genna Print

# Weather forecast for 17th to 23rd February 2026



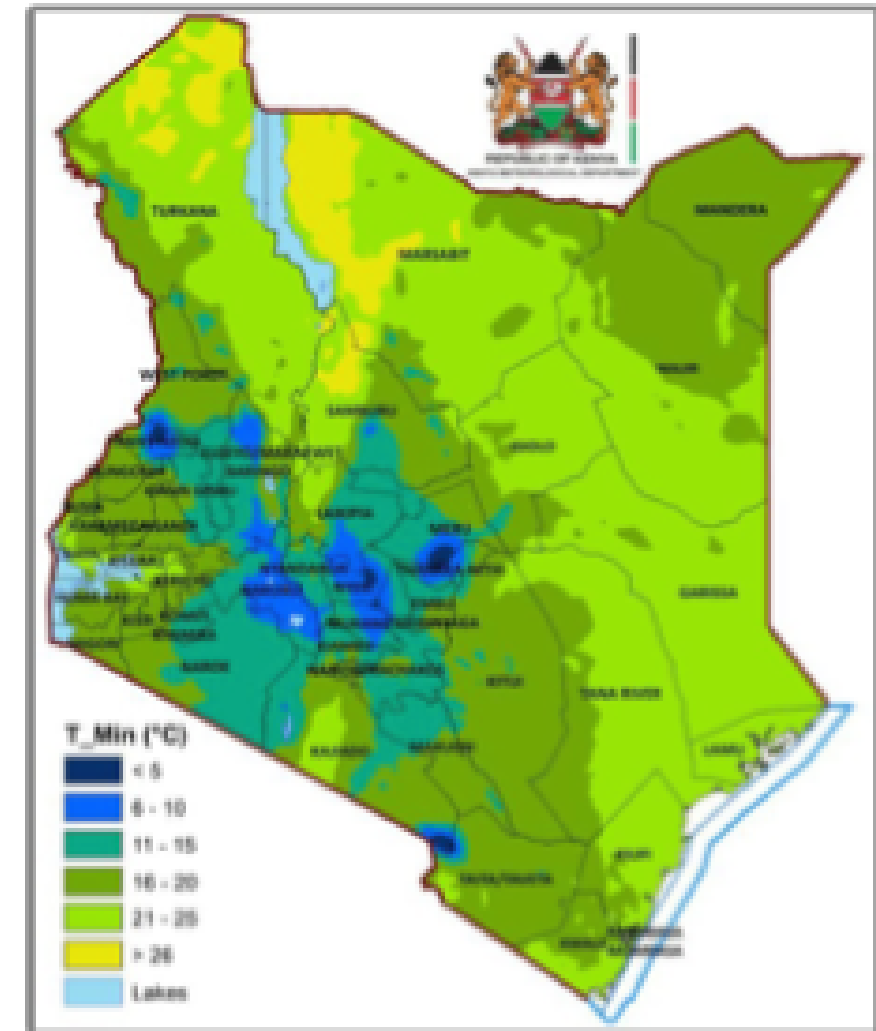
**Figure 1: Forecasted Seven-Day Total Rainfall for 17th to 23rd February 2026**

Rainfall is expected to continue in the Highlands East and West of the Rift Valley, the Lake Victoria Basin, the Rift Valley and parts of the South-eastern Lowlands and the Coast, as depicted in **Figure 1**. Northeastern and Northwestern Kenya are likely to be generally sunny and dry



**Figure 2: Average maximum temperatures for 17th to 23rd February 2026**

Daytime (maximum) average temperatures of more than 30°C are expected in several parts of the country including the Coast, the South-eastern Lowlands, North-eastern and North-western Kenya, as shown in **Figure 2**



**Figure 3: Forecasted Average Minimum Temperatures for 17th to 23rd February 2026**

Night-time (minimum) average temperatures are expected to be less than 10°C in some parts of the Highlands East and West of the Rift Valley, the Central Rift Valley and in the vicinity of Mt. Kilimanjaro, as illustrated in **Figure 3**

**Thanks to Kenya National Public Health Institute, our  
donors and our partners for your support!**

**Follow us on:**    
for **real-time updates** and key stories

**FOR MORE  
INFORMATION  
& FEEDBACK:**

**DESIGN**

**WRITERS**

**EDITORS**

---

✉ ndahendekireg@who.int Ardo Umar Farah  
✉ afkeninfo@who.int

Ardo Umar Farah  
Annastacia Muange  
Nancy Okwengu

Dr. Martins Chibueze Livinus  
Dr. Ngina Kisangau  
Dr. Diba Dulacha  
Nancy Okwengu