



Floods have affected 18 counties, displacing 12,338 households, with 65 deaths and 9 people reported missing. Response measures include public health advisories, activation of response teams, and ongoing disease surveillance.

Photo By: Genna Print



Emergency Preparedness and Response Weekly Situation Report

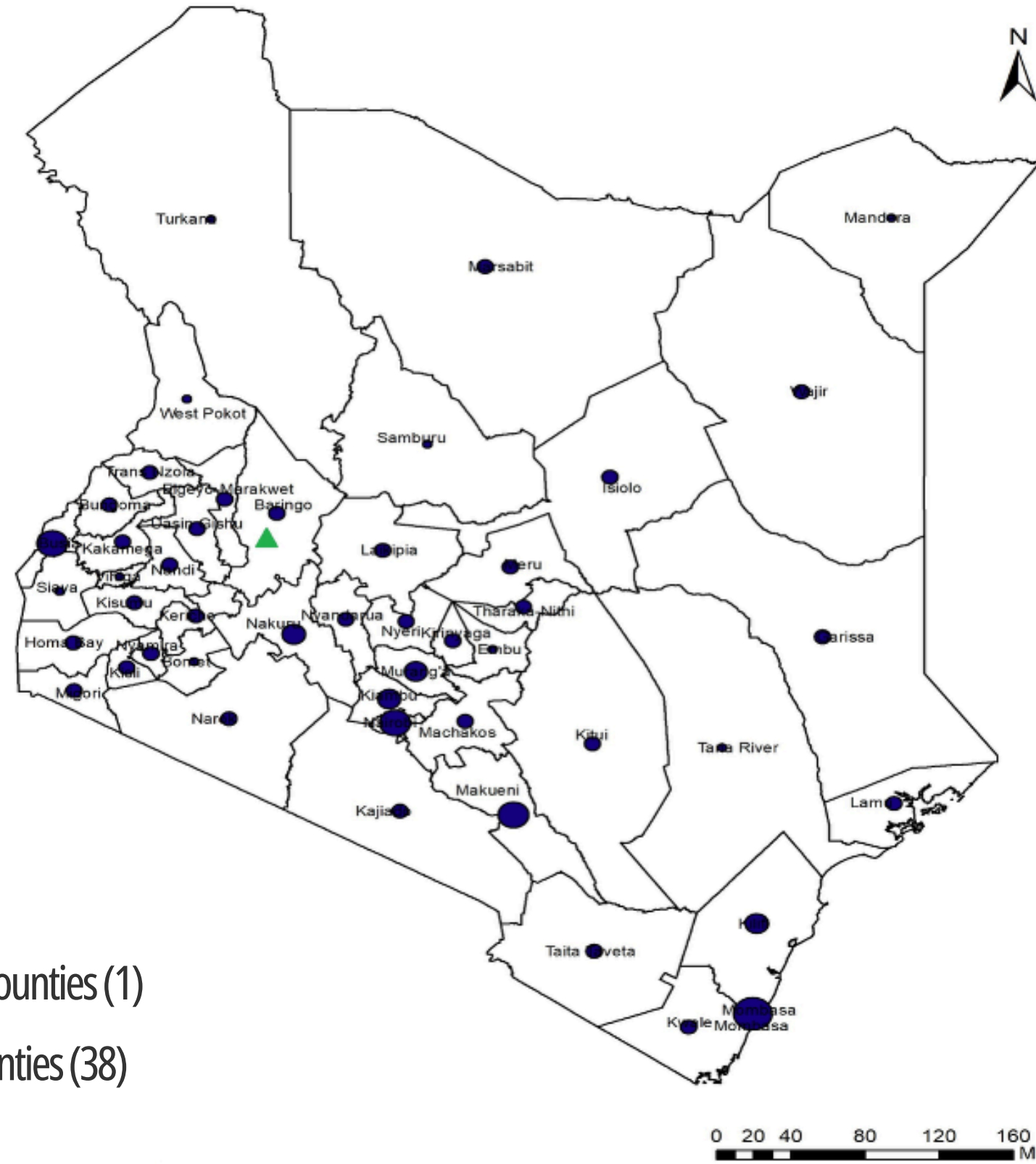
Week 11: 9th March 2026 to 15th March 2026
Data as reported by: 1700 hrs (EAT), 15th March 2026

0 New Events	1 Ongoing Events	2 Outbreaks	0 Humanitarian Crisis
------------------------	----------------------------	-----------------------	---------------------------------

1 Grade 3	0 Grade 2	0 Grade 1	1 Ungraded
---------------------	---------------------	---------------------	----------------------

HEALTH EMERGENCIES programme

Current Health Emergencies in Kenya 2026



Key

- ▲ Measles - cases (350), death (0), sub counties (1)
- Mpox - cases (1,074), deaths (19), counties (38)

0 20 40 80 120 160 Mile

The ministry of health, Palladium and WHO conducted a workshop to strengthen health workforce at Kenya's border crossings including airports, seaports, and land entry points.

Photo By: Ardo Farah



Summary of Health Emergencies in Kenya

Event	Total Cases	Cases Confirmed	Deaths	Case Fatality Rate	Case Contacts	Counties	Start of Reporting Period	Grade	
Mpox	1074	1074	19	1.8%	1376	38	31 July 2024	Grade 3	Ongoing

Sixteen new cases reported in Epi week eleven from five counties: Nairobi (7), Busia (4), Bungoma (2) Mombasa (2) and Nakuru(1). One new death from Mombasa county. There are 248 active cases, with 71 patients receiving facility care and 177 under home-based care. A total of 2,735 samples tested with a positivity rate of 39%.

Measles	350	21	0	0%	N/A	2	2024 - 2025	Ungraded	Ongoing
----------------	------------	-----------	----------	-----------	------------	----------	--------------------	-----------------	----------------

Five new cases reported in Epi week eleven from Moyale subcounty, Marsabit county. A total of 350 cases have been reported: 345 from Tiaty East Sub-County, Baringo County (including 16 confirmed cases), and 5 confirmed cases from Moyale Sub-County. Only 12 (3.5%) cases had a known vaccination status

Flood Impact	N/A	N/A	65	0%	N/A	18	2026	Ungraded	Ongoing
---------------------	------------	------------	-----------	-----------	------------	-----------	-------------	-----------------	----------------

Floods have affected 18 counties, displacing 12,338 households, with 65 deaths and 9 people reported missing. Response measures include public health advisories, activation of response teams, and ongoing disease surveillance.

Overview of key public health emergencies



16 New Cases

807 Cases Recovered

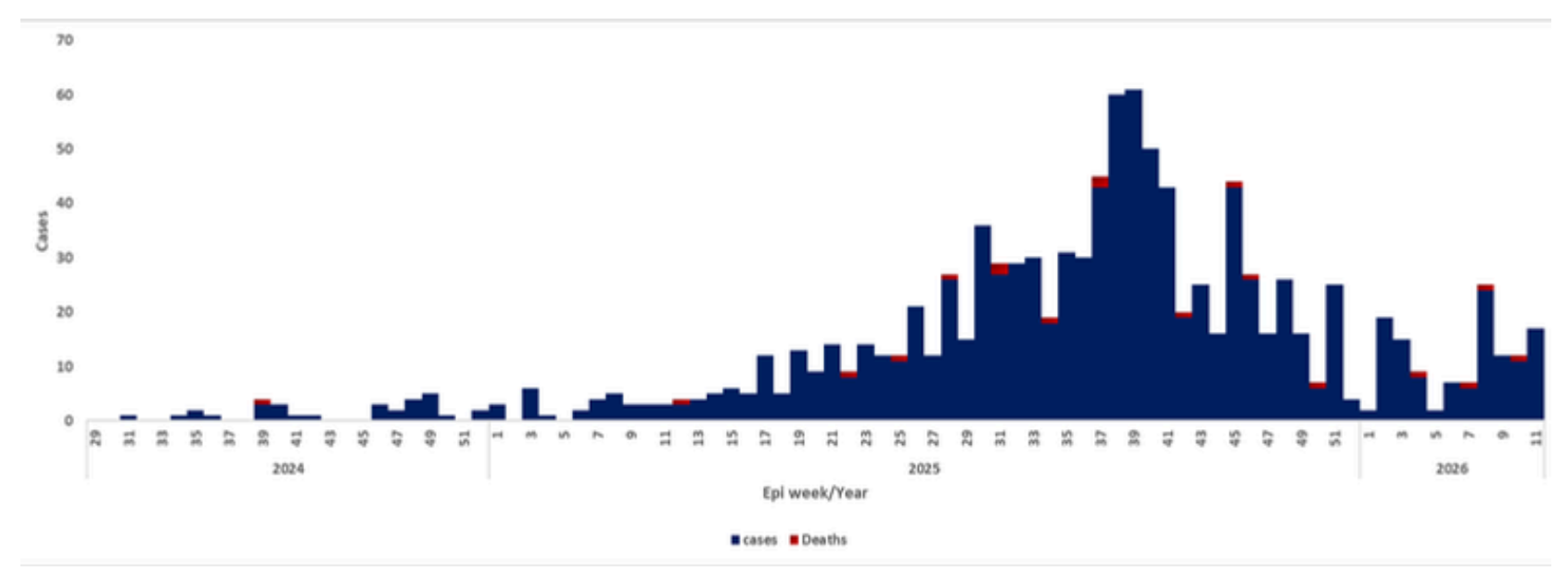
1074 Confirmed Cases

19 Deaths

- In 2026, 126 confirmed cases have been reported in thirteen counties
- Sixteen new cases reported in Epi week eleven from five counties: Nairobi (7), Busia (4), Bungoma (2), Mombasa (2) and Nakuru(1)
- One new death from Mombasa county
- Ongoing transmission with wide geographic spread; sustained surveillance, testing, and contact follow-up remain critical

Epi-curve of mpox cases, in Kenya, July 2024 - March 2026

- Outbreak remains active with a peak observed from July Epi week 28, 2025 - 41, but there has been a continuous decline of cases from week 43 (from 38 counties to thirteen counties in 2026).
- Four counties have consistently reported cases with Mombasa leading 40.5%, Nairobi 15.6% ,Busia 10.2 % and Makueni 7.8%



Response activities

- Active case search ongoing in the affected areas
- Contact tracing ongoing on the all active cases
- Risk communication and community engagement activities ongoing in the affected areas
- Case management of patients ongoing in the designated isolation and treatment centres

Challenges

- Stigma limiting early reporting
- Low risk perception of the disease in the community due to low perceived vulnerability and lack of direct experience

Ungraded **Measles Outbreak**  2 county

5 New Cases

350 Cases

21 Laboratory Confirmed

0 Death

- Since **January 2026**, a **total of 322** cases have been reported from Tiaty East Sub-county, Baringo county and Moyale sub county in Marsabit county
- **A total of 350 cases** have been reported: **345** from Tiaty East Sub-County, Baringo County (including **16 confirmed cases**), and **5 confirmed cases** from Moyale Sub-County
- **Five new cases reported in the past week**, all from Moyale subcounty, Marsabit County
- The majority of cases, **206 (58.7%)** are aged ≥ 10 years
- More than half are male **219 (63%)**
- Only **12 (3.5%)** cases had a known vaccination status

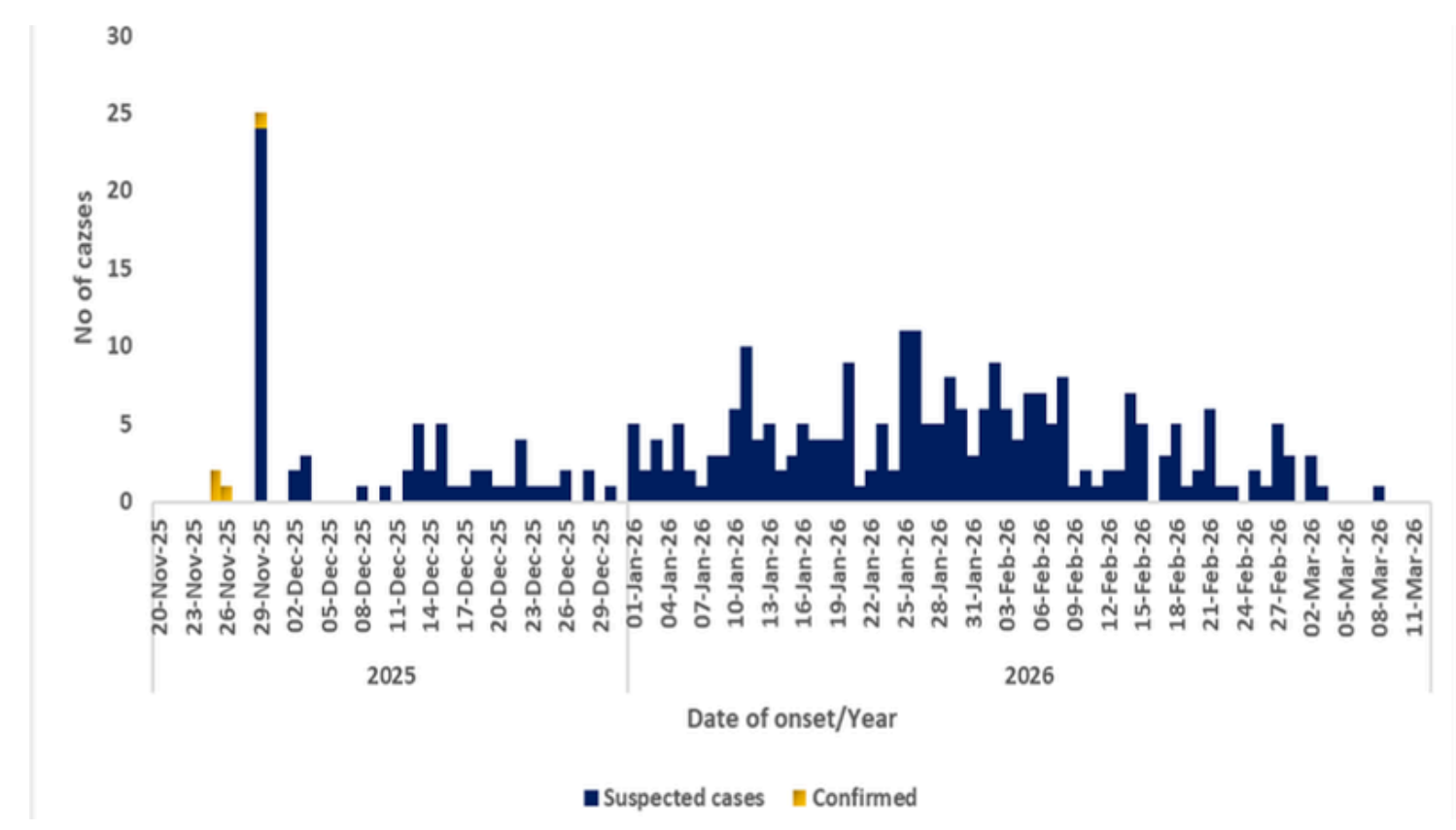
Next Steps

- Additional mop-up campaign **planned for Tiaty East Sub-County**

Challenges

- Delayed sub-national reporting affecting timeliness
- Inadequate supplies of reagents shortages, resulting in delays in confirming suspected cases

Epi curve of measles cases in Tiaty East, Baringo county November 2025 to March 2026



March April May Rains Flood Updates 14th March 2026

Counties Affected	Households displaced	People Missing	Deaths
18	12,338	9	65

Nairobi, Kisumu, Narok, Kiambu, Migori, Siaya, Makueni, Busia, Wajir, Kisii, Homa Bay, Taita Taveta, Baringo, Kajiado, Kitui, Kwale, Machakos and Kericho

Services Disrupted

1. Impassable roads and bridges
2. Power outages
3. Water supply lines damaged
4. Schools Impacted

Infrastructure Damaged

- Flooding of residential areas
- Destruction of farms
- Flooding in markets/Businesses

Public Health Risks

1. Water-borne diseases – including cholera, typhoid, and diarrhoeal diseases resulting from consumption of contaminated water or food
2. Vector-borne diseases – including malaria, dengue, and other mosquito-born illnesses due to increased mosquito breeding sites
3. Respiratory infections – increased risk due to cold and damp conditions
4. Flood-related injuries – including drowning, trauma, and snake bites
5. Poor sanitation and waste accumulation – which may further contribute to disease outbreaks

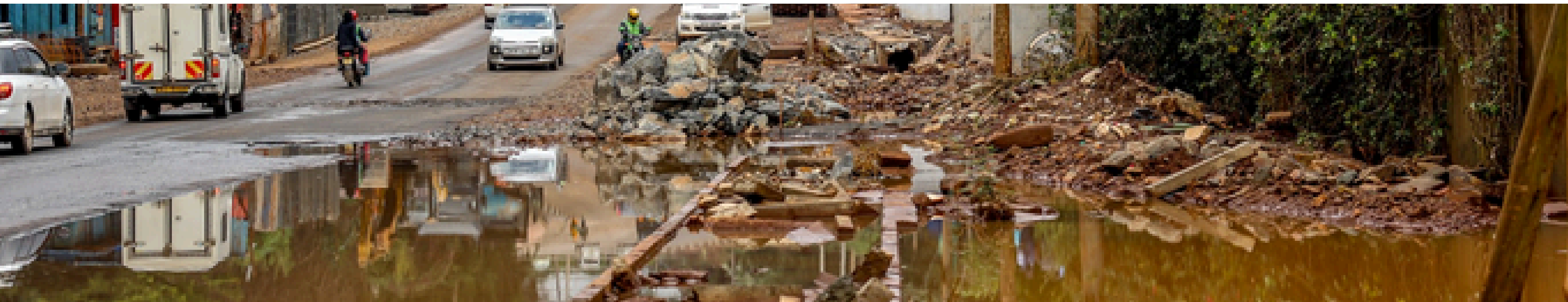
March April May Rains Flood Updates 14th March 2026

Response Actions

1. Public health advisories continue to be issued to the public regarding the ongoing emergency by the State Department for Public Health and the Multi-Agency Emergency Response Secretariat
2. The incident management support team (IMST) has been activated and is operational at the national public health emergency operations centre (PHEOC)
3. Needs and risk assessments are ongoing in the affected areas, conducted by deployed multi-agency teams
4. Active disease surveillance is ongoing in the affected areas
5. Coordination with partners and stakeholders is ongoing

Key Challenges

1. Shortage of WASH commodities and emergency medical supplies
2. Unpredictable rainfall complicating response planning



**Thanks to Kenya National Public Health Institute,
our donors and our partners for your support!**

Follow us on:  

for **real-time updates** and key stories

**FOR MORE
INFORMATION
& FEEDBACK:**

✉ ndahendekireg@who.int

✉ afkeninfo@who.int