



National Mpox Situation Report

1 Summary

Total Cases	New Last 24h	Number of Deaths	Case Fatality Rate (%)
8,167	0	50	0.61

Key Points:

- Epidemic remains active.** To date **82% (120/146)** of districts reported at least one case since the beginning of the outbreak and **19% (28/146)** reporting new cases in the past **21 days**.
- Overall decline.** There has been an overall decline in the weekly incident cases reported. For the first time since October 2024, fewer than 60 incident cases have been reported each week for **four consecutive epidemiological weeks**.
- Flattening curve.** There is an apparent flattening of the curve as indicated in the cumulative curve in **figure 2.7** over the last **40 days**.
- High-risk mortality observed.** Cumulatively **50 deaths** have occurred among confirmed cases, **nearly half (46%)** of whom were **co-infected with HIV**.
- Disproportionate deaths in males and females** An equal number of deaths occurred among males and females (25 each). Among the male deaths, **72% (18/25)** were below 30 years of age, whereas among the female deaths, **68% (17/25)** were aged above 30 years.

Weekly and Cumulative Confirmed Mpox Cases¹

Year	Epi Week	Weekly Confirmed Cases	Cumulative Confirmed Cases	Percent Change (%)
2025	30	124	7728	1.63
2025	31	83	7811	1.07
2025	32	72	7883	0.92
2025	33	13	7896	0.16
2025	34	32	7928	0.41
2025	35	85	8013	1.07
2025	36	26	8039	0.32
2025	37	47	8086	0.58
2025	38	50	8136	0.62
2025	39	31	8167	0.38

¹ This is data for the last 10 Epiweeks. % Week-on-Week Change

2 Surveillance and Epidemiology

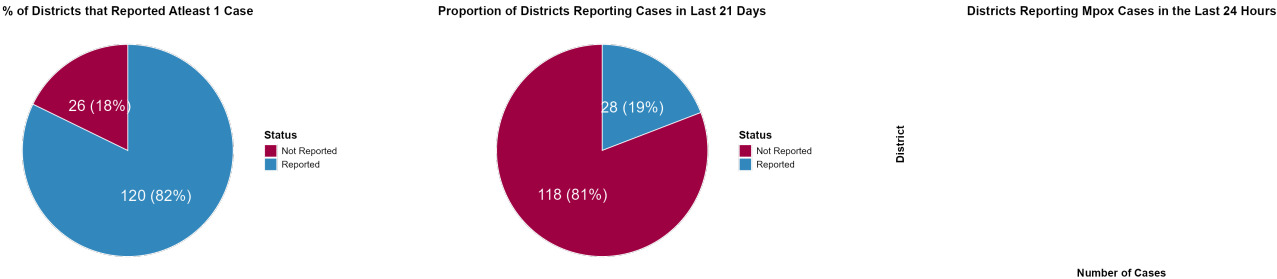
2.1 Summary Table of Incident Cases by Age and Sex

Cases by Age Group and Gender							
Distribution across demographics							
	Age Group	Total Cases	% of Cases ¹	Males	% of All Males ²	Females	% of All Females ²
	0-4	355	4.6%	204	4.6%	151	4.6%
	5-9	329	4.3%	185	4.2%	144	4.4%
	10-14	235	3.1%	126	2.9%	109	3.3%
	15-19	715	9.3%	337	7.7%	378	11.6%
	20-24	1,279	16.7%	566	12.9%	713	21.8%
	25-29	1,597	20.8%	874	19.9%	723	22.2%
	30-34	1,198	15.6%	730	16.6%	468	14.3%
	35-39	913	11.9%	615	14.0%	298	9.1%
	40-44	521	6.8%	365	8.3%	156	4.8%
	45-49	313	4.1%	231	5.3%	82	2.5%
	50+	207	2.7%	165	3.8%	42	1.3%
sum	—	7,662 ³	100.0%	4,398	100.0%	3,264	100.0%
¹ Percentage of all cases within each age group							
² Percentage of all cases within each gender category							
³ Total cases less due to some missing age information							

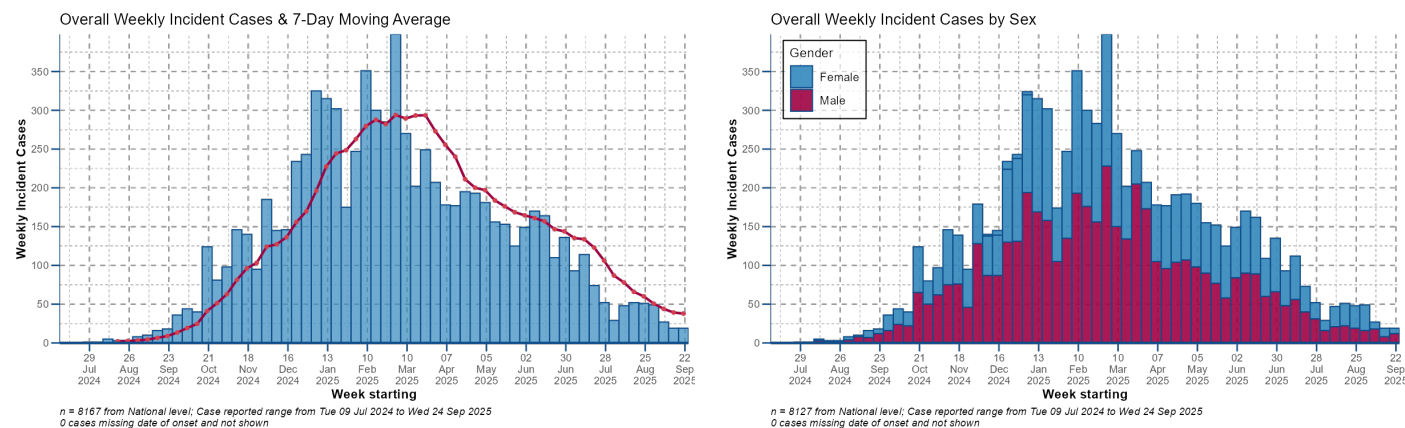
2.2 Summary Table of Incident Cases by the Top 10 Districts

Top 10 Districts Summary					
District	Total Cases	Total Deaths	Cases Last Epiweek	Deaths Last Epiweek	% Change in Cases ¹
Kampala District	2,735	16	1	0	–66.7%
Wakiso District	966	8	3	0	0.0%
Mbarara City	721	5	6	0	NA
Masaka City	367	3	3	0	200.0%
Mukono District	290	2	0	0	NA
Hoima City	226	2	1	0	–50.0%
Lyantonde District	143	0	0	0	NA
Nakasongola District	128	1	0	0	NA
Luwero District	112	0	0	0	NA
Mubende District	112	0	0	0	NA
¹ The percentage change in cases is calculated by comparing the number of cases in the most recent epidemiological week to the previous epidemiological week.					

2.3 Proportion of Affected Districts



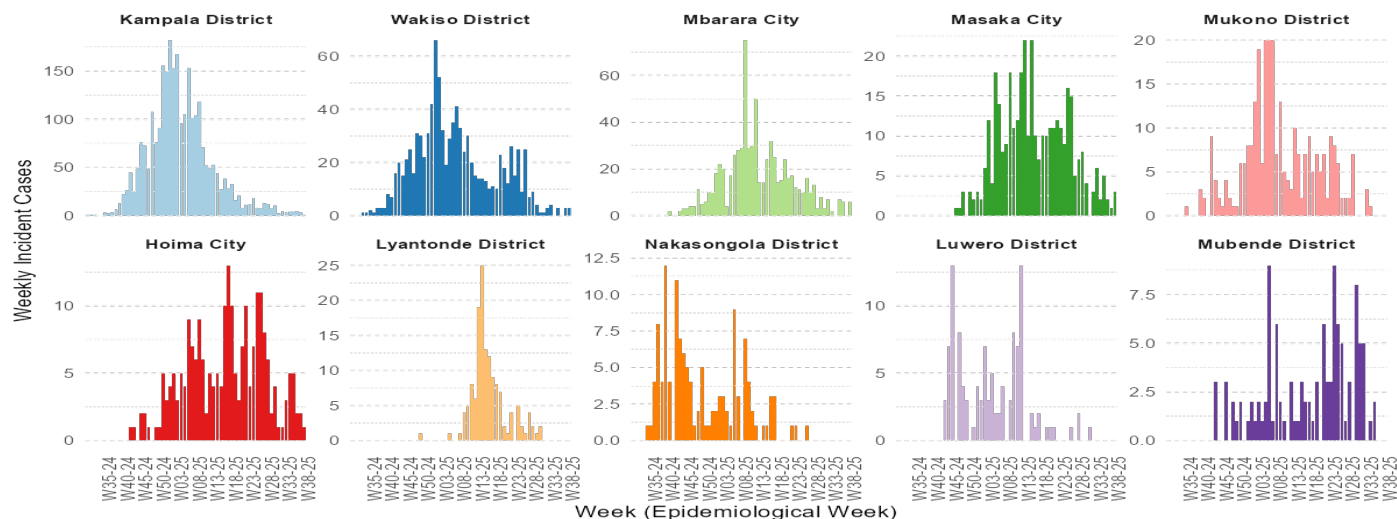
2.4 Overall Distribution of Incident Cases by Time



2.5 Epicurves of the Top 10 Districts

Weekly Epicurves of Top 10 Districts

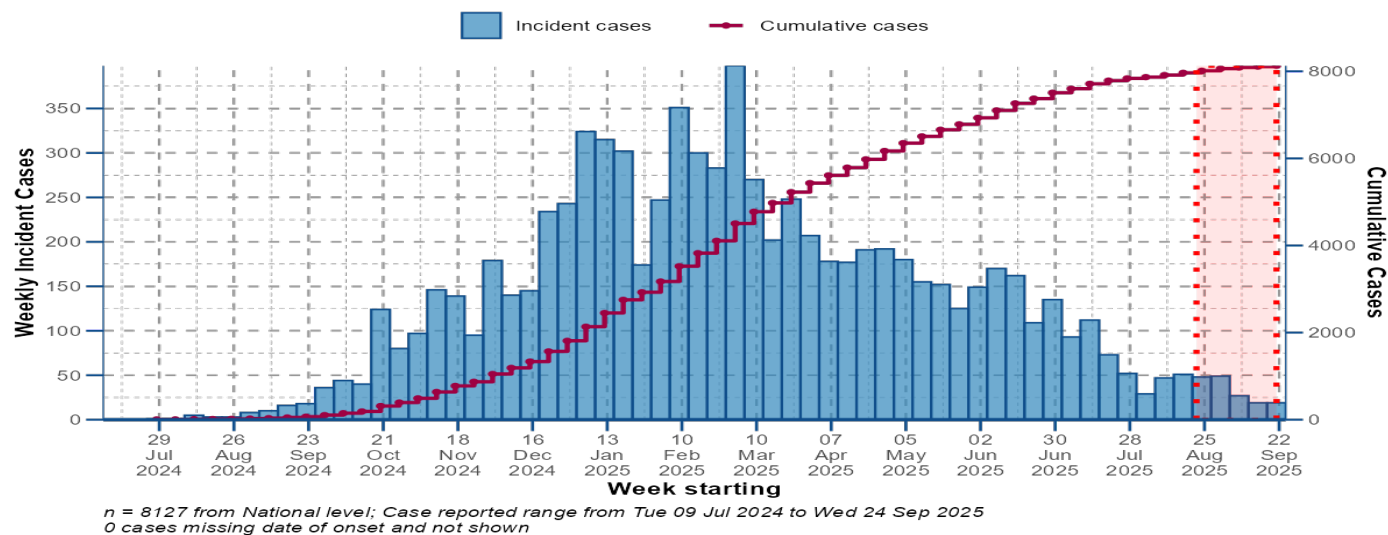
Note: Each panel uses a different y-axis scale to enhance readability



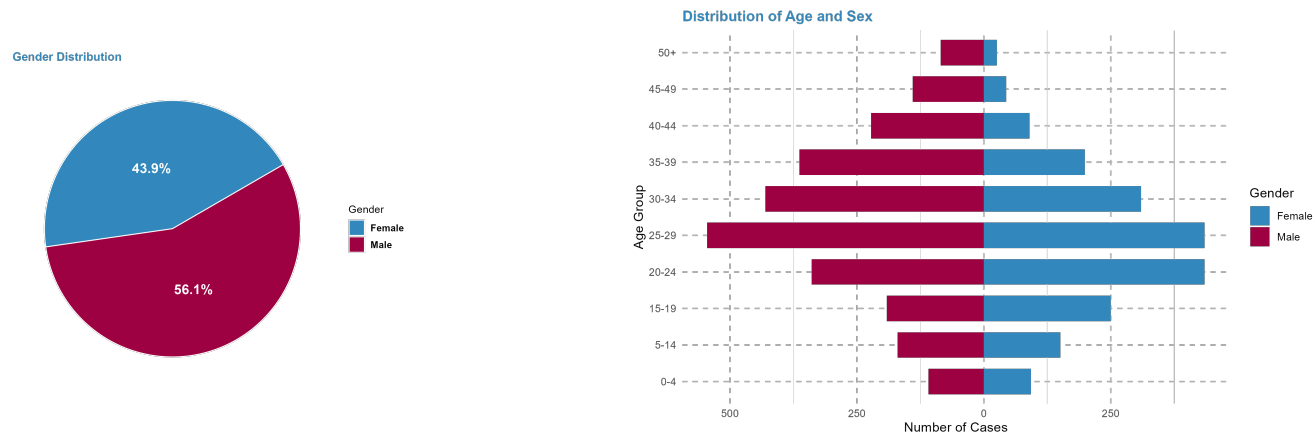
2.6 Overall Distribution of Incident Cases by Time

2.7 Weekly Cumulative Cases

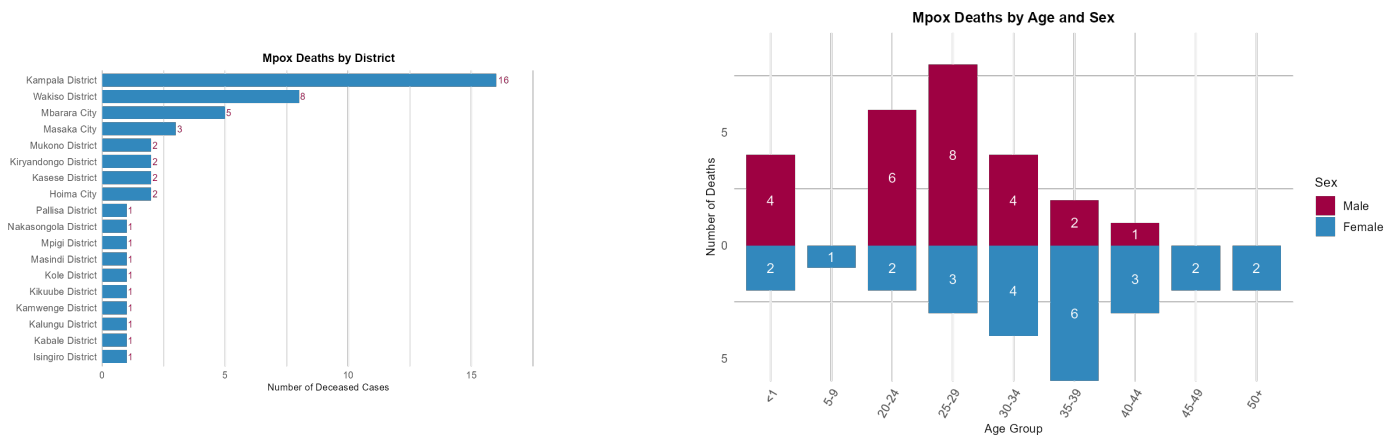
Weekly Incident Mpox Cases & Cumulative (Confirmed Only)



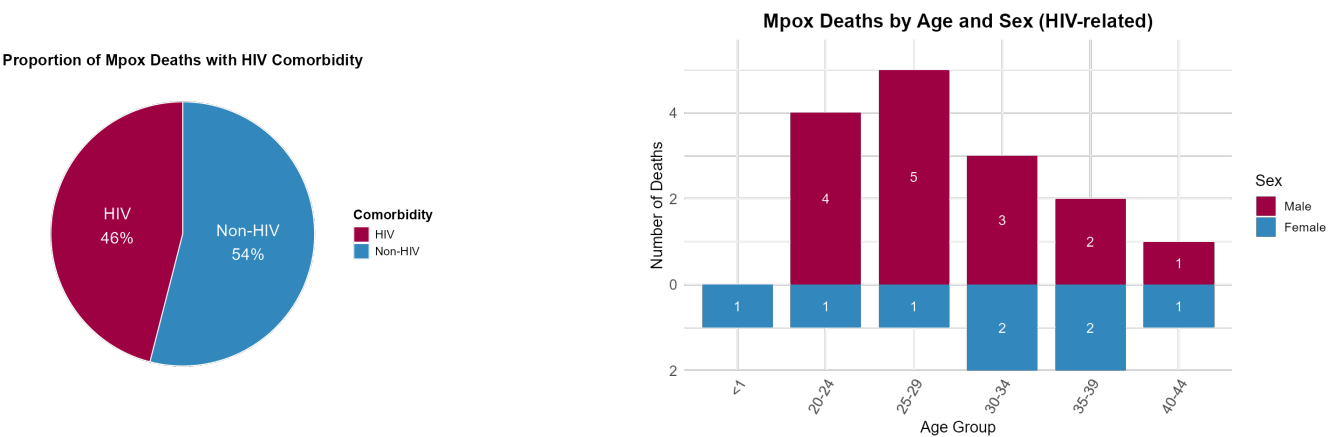
2.8 Overall Distribution of Incident Cases by Age and Sex



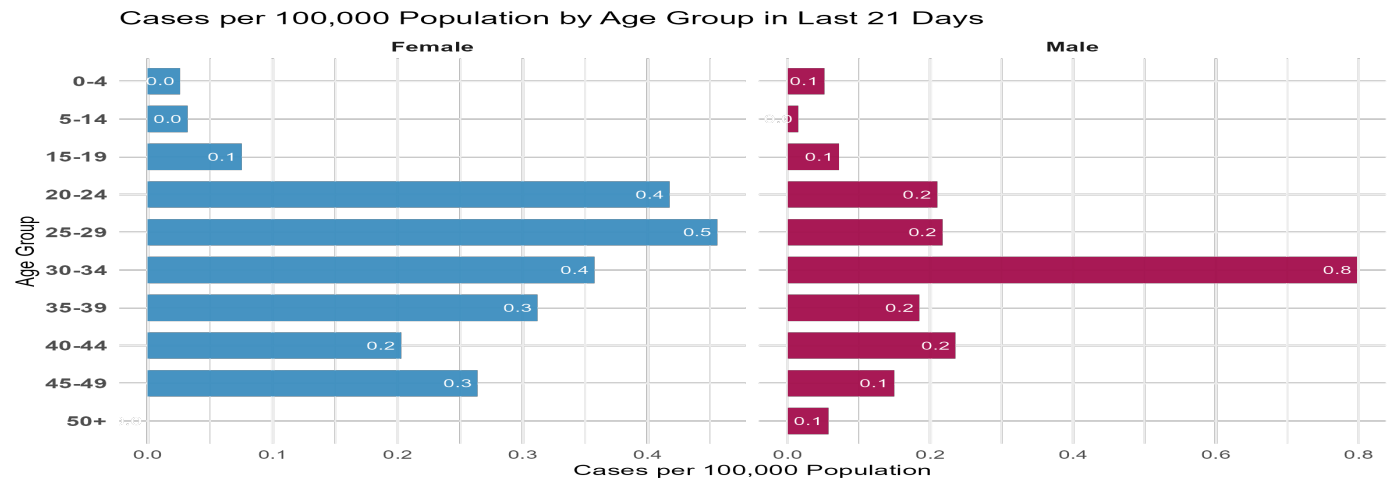
2.9 Overall Distribution of Deaths by Place and Sex - Age



2.10 Distribution of Deaths by HIV Status



2.11 Overall Attack Rates by Age



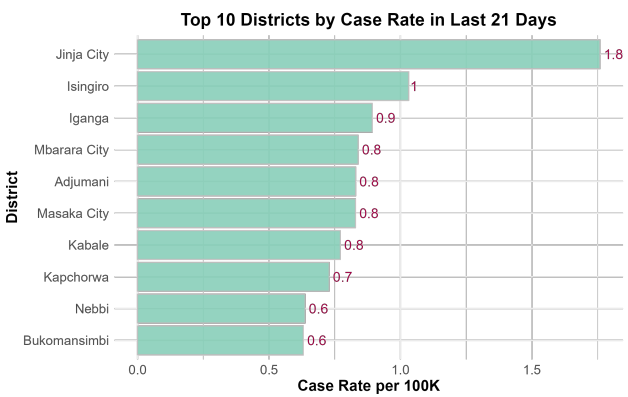
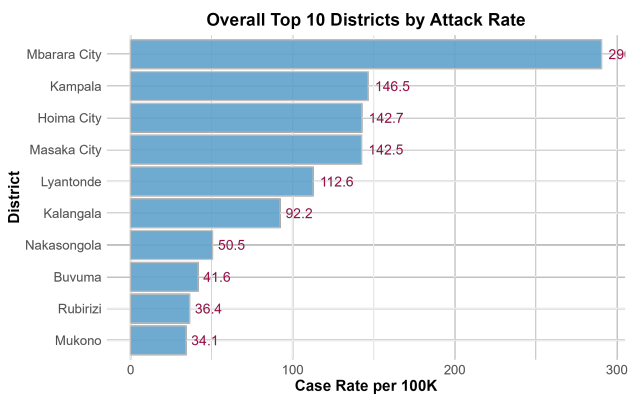
2.12 Distribution of Incident Cases by Place(Absolute Numbers)



2.13 Attack Rates per 100K Population by Place



2.14 Attack Rates per 100K Population by Place and Top 10 Districts





THE REPUBLIC OF UGANDA

MINISTRY OF HEALTH

MPOX CASE DEFINITION

COMMUNITY CASE DEFINITION

- An illness with signs of skin rash, fever, headache, muscle aches, back pain, and body weakness.

SUSPECTED CASE

- Any person with skin rash on any part of the body not explained by any locally relevant common cause of papular or vesicular rash, mucosal lesions or swollen lymph nodes with acute onset of fever ($>38.5^{\circ}\text{C}$), headache, myalgia (muscle pain/body ache), back pain, profound weakness, or fatigue.

PROBABLE CASE

- A suspect case with history of contact to probable or confirmed Mpox case 21 days before the onset of signs or symptoms

OR

- Has an epidemiological link to a probable or confirmed case of Mpox in the 21 days before symptom onset including multiple and/or casual sexual partners in the 21 days before symptom onset: has a positive test result for orthopoxviral infection (e.g., OPXV-specific PCR without MPXV-specific PCR or sequencing)

**CONFIRMED CASE**

- A person with laboratory confirmed MPXV infection by detection of Unique sequences of Viral DNA by real-time polymerase chain reaction (RT-PCR) and/or sequence

Contact Us

Twitter: @MinofHealthUG

Website: <https://health.go.ug/>

Talk to Us: 0800-100-066

Write to Us: helpdesk@health.go.ug

