



National Mpox Situation Report

1 Summary

Total Cases	New Last 24h	Number of Deaths	Case Fatality Rate (%)
7,731	0	48	0.62

Key Points:

- Epidemic remains active.** To date **82% (120/146)** of districts reported at least one case since the beginning of the outbreak and **34% (50/146)** reporting new cases in the past **21 days**.
- Resurgence.** Whereas the overall epicurve indicates a general decline in incident cases, there is an observed resurgence in previously high burdened districts especially **Wakiso and Hoima City**.
- Week-on-week decrease.** From **Week 26 to Week 29**, the weekly reported Mpox cases declined steadily from **233 to 173**, then to **108**, and finally to **70**. This corresponds to a **25.8% decrease from Week 26 to 27**, **37.6% from Week 27 to 28**, and **35.2% from Week 28 to 29**. However, there was a **67.57% increase** from week 29 to 30.
- High-risk mortality observed.** Cumaulatively **48 deaths** have occurred among confirmed cases, **half (47.9%)** of whom were **co-infected with HIV**.
- Young adults are disproportionately affected.** Attack rates are highest among **females aged 24–29 (AR: 1.9/100,000)**. Among males, the most affected agegroup is 35-39 (**AR: 2.6/100,000**).

Weekly and Cumulative Confirmed Mpox Cases¹

Year	Epi Week	Weekly Confirmed Cases	Cumulative Confirmed Cases	Percent Change (%)
2025	22	167	6635	2.58
2025	23	104	6739	1.57
2025	24	118	6857	1.75
2025	25	141	6998	2.06
2025	26	233	7231	3.33
2025	27	173	7404	2.39
2025	28	108	7512	1.46
2025	29	74	7586	0.99
2025	30	124	7710	1.63
2025	31	21	7731	0.27

¹ This is data for the last 10 Epiweeks. % Week-on-Week Change

2 Surveillance and Epidemiology

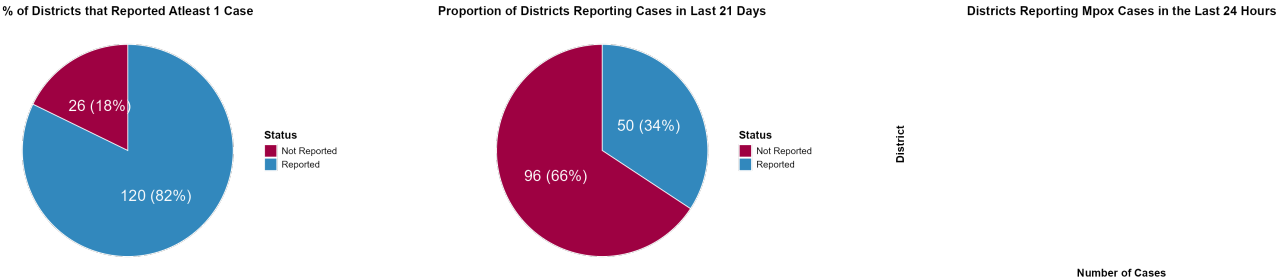
2.1 Summary Table of Incident Cases by Age and Sex

Cases by Age Group and Gender							
Distribution across demographics							
	Age Group	Total Cases	% of Cases ¹	Males	% of All Males ²	Females	% of All Females ²
	0-4	346	4.7%	198	4.7%	148	4.8%
	5-9	320	4.4%	180	4.2%	140	4.5%
	10-14	213	2.9%	117	2.8%	96	3.1%
	15-19	679	9.3%	325	7.7%	354	11.4%
	20-24	1,220	16.6%	545	12.9%	675	21.8%
	25-29	1,530	20.9%	843	19.9%	687	22.2%
	30-34	1,149	15.7%	702	16.6%	447	14.4%
	35-39	883	12.0%	598	14.1%	285	9.2%
	40-44	501	6.8%	352	8.3%	149	4.8%
	45-49	300	4.1%	222	5.2%	78	2.5%
	50+	197	2.7%	156	3.7%	41	1.3%
sum	—	7,338 ³	100.0%	4,238	100.0%	3,100	100.0%
¹ Percentage of all cases within each age group							
² Percentage of all cases within each gender category							
³ Total cases less due to some missing age information							

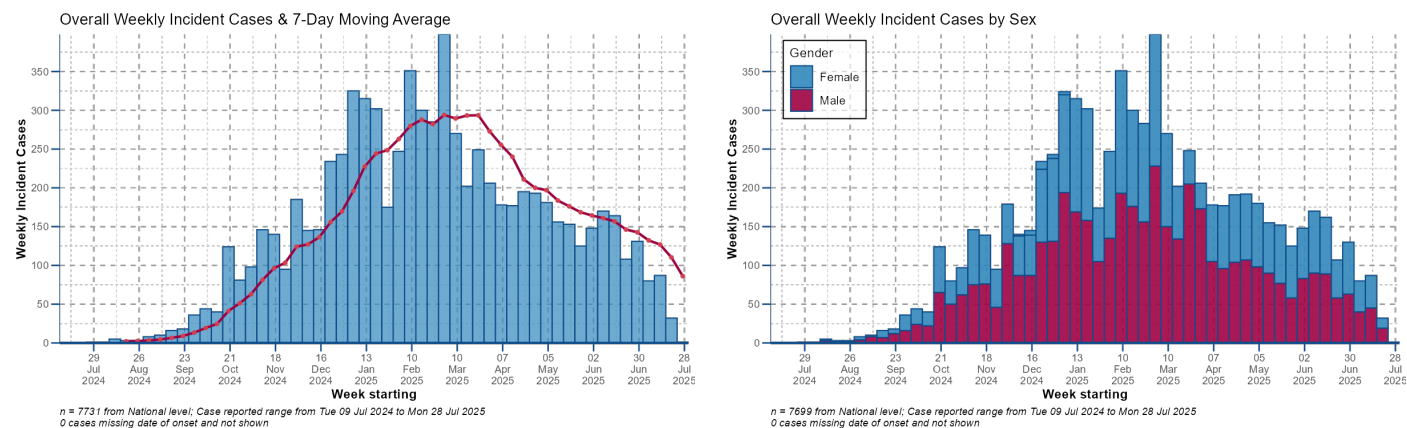
2.2 Summary Table of Incident Cases by the Top 10 Districts

Top 10 Districts Summary					
District	Total Cases	Total Deaths	Cases Last Epiweek	Deaths Last Epiweek	% Change in Cases ¹
Kampala District	2,694	16	1	0	−75.0%
Wakiso District	944	8	0	0	−100.0%
Mbarara City	672	4	0	0	NA
Masaka City	331	3	0	0	−100.0%
Mukono District	278	2	0	0	NA
Hoima City	201	2	0	0	−100.0%
Lyantonde District	140	0	0	0	−100.0%
Nakasongola District	128	1	0	0	NA
Luwero District	111	0	0	0	NA
Kyotera District	91	0	0	0	NA
¹ The percentage change in cases is calculated by comparing the number of cases in the most recent epidemiological week to the previous epidemiological week.					

2.3 Proportion of Affected Districts



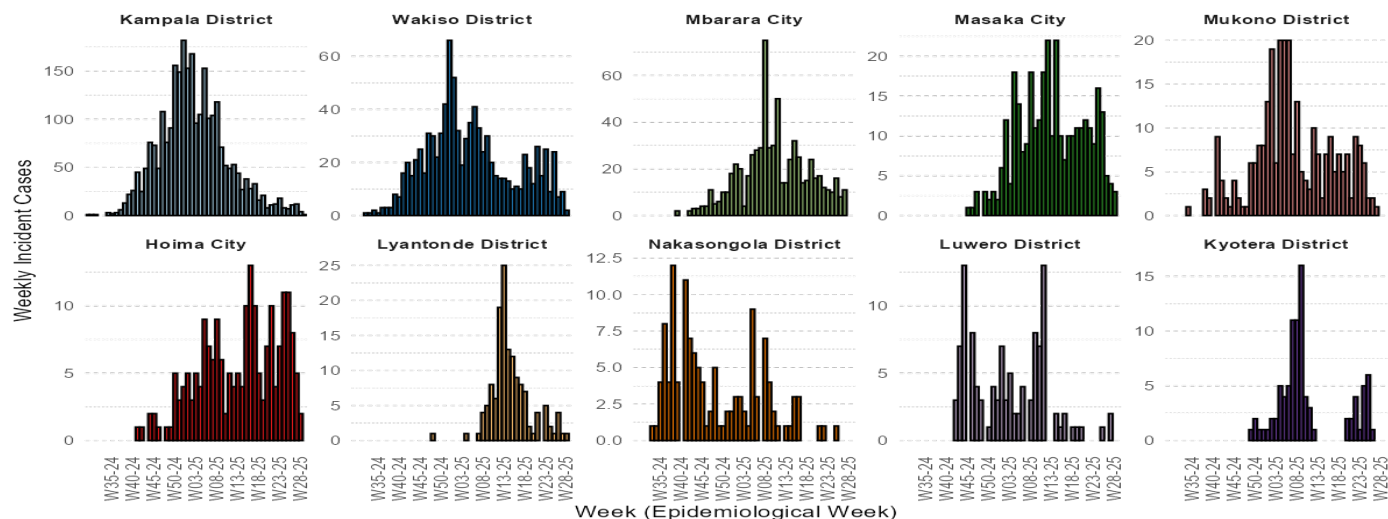
2.4 Overall Distribution of Incident Cases by Time



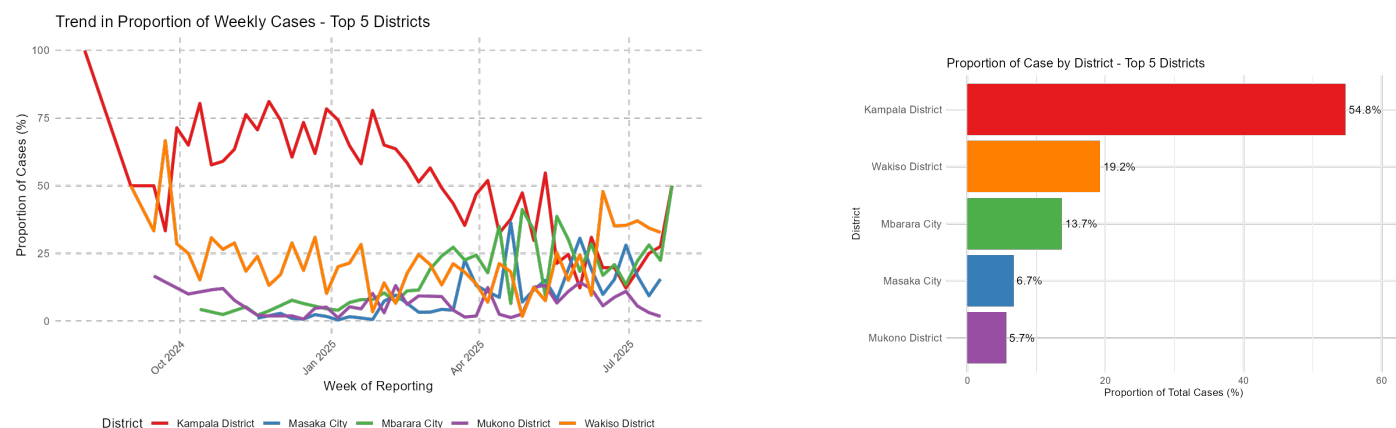
2.5 Epicurves of the Top 10 Districts

Weekly Epicurves of Top 10 Districts

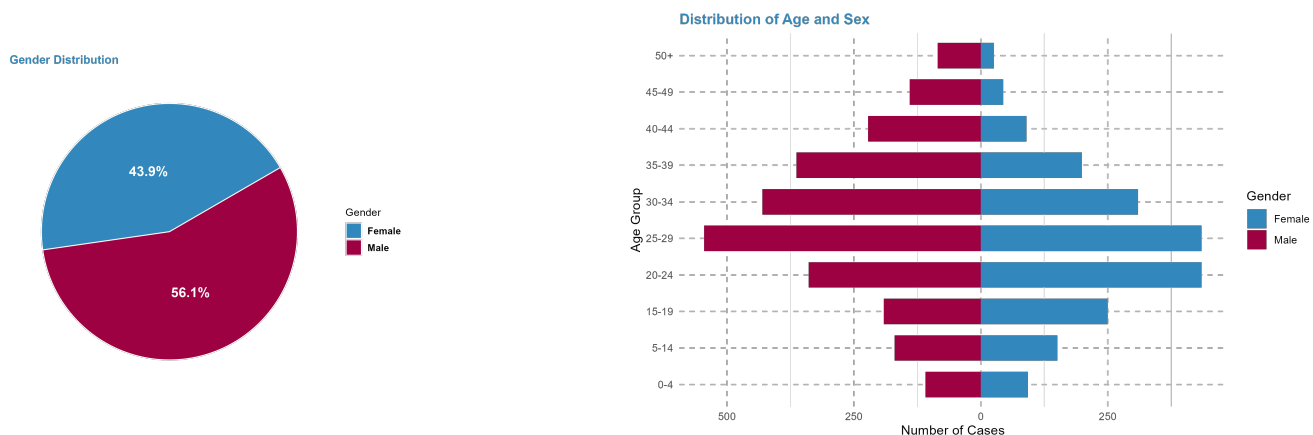
Note: Each panel uses a different y-axis scale to enhance readability



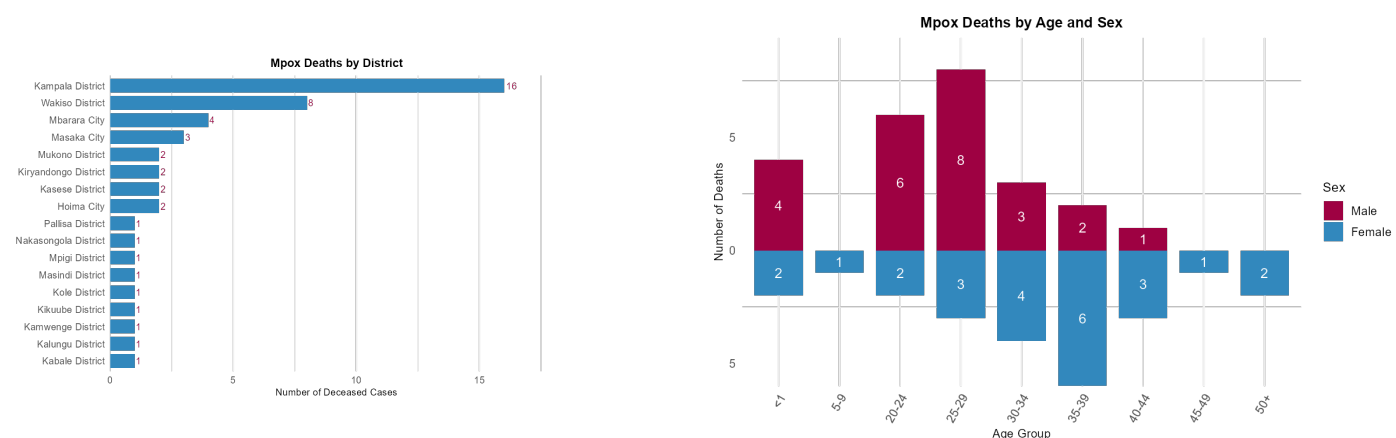
2.6 Overall Distribution of Incident Cases by Time



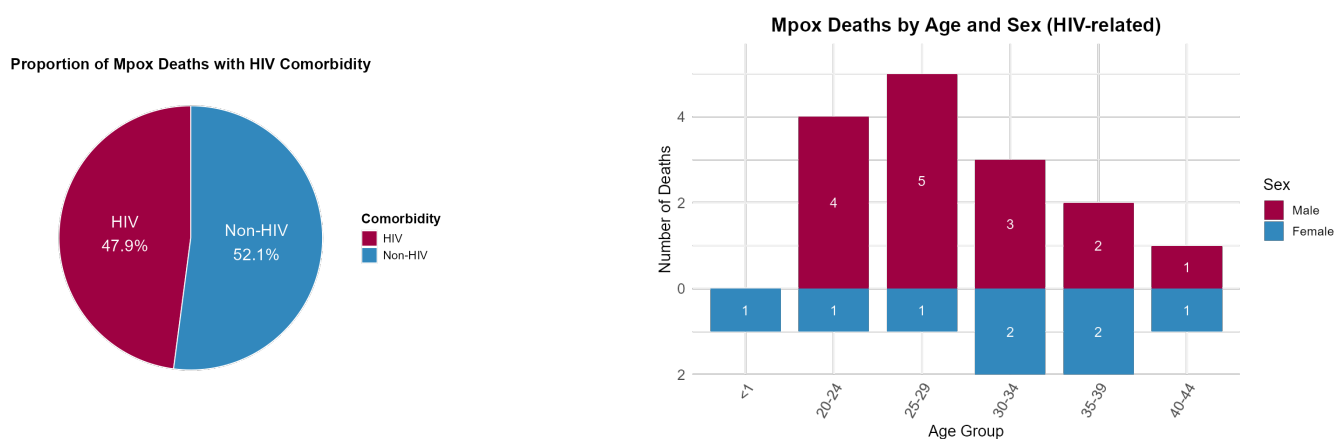
2.7 Overall Distribution of Incident Cases by Age and Sex



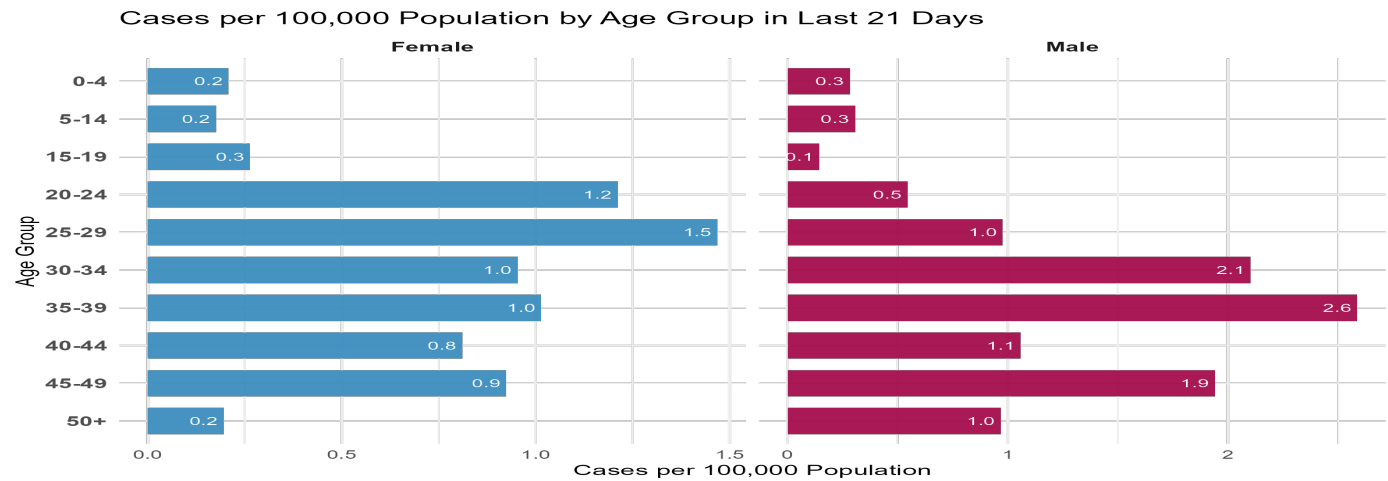
2.8 Overall Distribution of Deaths by Place and Sex - Age



2.9 Distribution of Deaths by HIV Status



2.10 Overall Attack Rates by Age



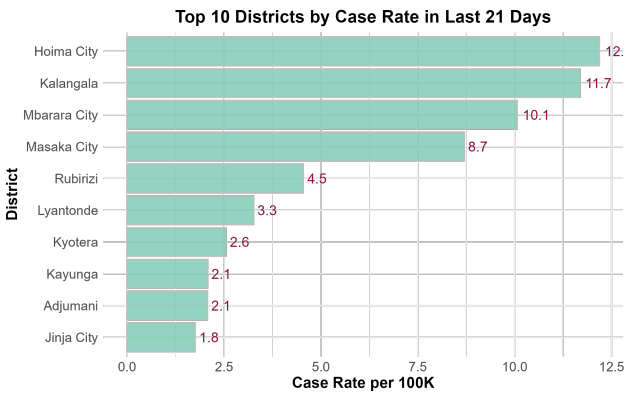
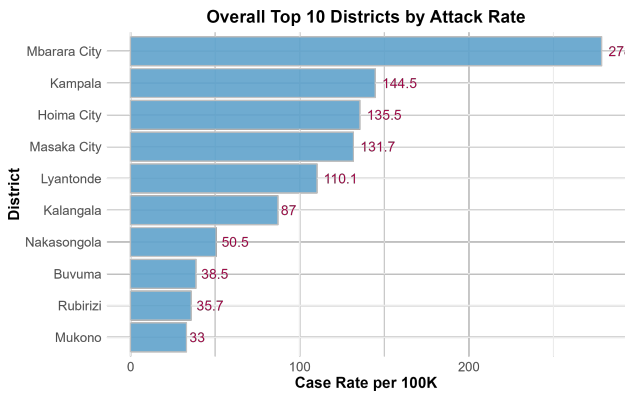
2.11 Distribution of Incident Cases by Place(Absolute Numbers)



2.12 Attack Rates per 100K Population by Place



2.13 Attack Rates per 100K Population by Place and Top 10 Districts





THE REPUBLIC OF UGANDA

MINISTRY OF HEALTH

MPOX CASE DEFINITION

COMMUNITY CASE DEFINITION

- An illness with signs of skin rash, fever, headache, muscle aches, back pain, and body weakness.

SUSPECTED CASE

- Any person with skin rash on any part of the body not explained by any locally relevant common cause of papular or vesicular rash, mucosal lesions or swollen lymph nodes with acute onset of fever ($>38.5^{\circ}\text{C}$), headache, myalgia (muscle pain/body ache), back pain, profound weakness, or fatigue.

PROBABLE CASE

- A suspect case with history of contact to probable or confirmed Mpox case 21 days before the onset of signs or symptoms

OR

- Has an epidemiological link to a probable or confirmed case of Mpox in the 21 days before symptom onset including multiple and/or casual sexual partners in the 21 days before symptom onset: has a positive test result for orthopoxviral infection (e.g., OPXV-specific PCR without MPXV-specific PCR or sequencing)

**CONFIRMED CASE**

- A person with laboratory confirmed MPXV infection by detection of Unique sequences of Viral DNA by real-time polymerase chain reaction (RT-PCR) and/or sequence

Contact Us

Twitter: @MinofHealthUG

Website: <https://health.go.ug/>

Talk to Us: 0800-100-066

Write to Us: helpdesk@health.go.ug

