



National Mpox Situation Report

1 Summary

Total Cases	New Last 24h	Number of Deaths	Case Fatality Rate (%)
6,862	7	44	0.64

Key Points:

- Epidemic remains active.** The epidemic remains active and evolving, with varying transmission dynamics across the country. While there is a notable decline in weekly incident cases, sustained transmission is ongoing in identified hotspots. To date **81% (118/146)** of districts reported at least one case since the beginning of the outbreak and **42% (61/146)** reporting new cases in the past **21 days**.
- New districts affected.** Of the 7 districts registering cases in last 24 hours **86% (6/7)** were cases registered in South Western Uganda. Two additional districts in South western Uganda including **Sheema and Kiruhura** have reported new cases.
- High-risk mortality observed.** A total of **44 deaths** have occurred among confirmed cases, **over half (52.3%)** of whom were **co-infected with HIV**, underscoring vulnerabilities in this population. Persons co-infected with HIV had four times higher odds of severe Mpox disease
- Young adults are disproportionately affected.** Attack rates are highest among **females aged 24–34 (AR: 2.1/100,000)**. Among males, the most affected agegroup is 35-39 (**AR: 3.2/100,000**).

Weekly and Cumulative Confirmed Mpox Cases¹

Year	Epi Week	Weekly Confirmed Cases	Cumulative Confirmed Cases	Percent Change (%)
2025	16	177	5564	3.29
2025	17	160	5724	2.88
2025	18	217	5941	3.79
2025	19	233	6174	3.92
2025	20	149	6323	2.41
2025	21	144	6467	2.28
2025	22	167	6634	2.58
2025	23	104	6738	1.57
2025	24	117	6855	1.74
2025	25	7	6862	0.10

¹ This is data for the last 10 Epiweeks. % Week-on-Week Change

2 Surveillance and Epidemiology

2.1 Summary Table of Incident Cases by Age and Sex

Cases by Age Group and Gender							
Distribution across demographics							
Age Group		Total Cases	% of Cases ¹	Males	% of All Males ²	Females	% of All Females ²
	0-4	291	4.4%	165	4.3%	126	4.6%
	5-9	263	4.0%	148	3.9%	115	4.2%
	10-14	184	2.8%	100	2.6%	84	3.1%
	15-19	624	9.5%	299	7.9%	325	11.9%
	20-24	1,100	16.8%	504	13.2%	596	21.7%
	25-29	1,374	21.0%	772	20.3%	602	22.0%
	30-34	1,042	15.9%	633	16.6%	409	14.9%
	35-39	787	12.0%	538	14.1%	249	9.1%
	40-44	450	6.9%	317	8.3%	133	4.9%
	45-49	261	4.0%	193	5.1%	68	2.5%
	50+	171	2.6%	137	3.6%	34	1.2%
sum	—	6,547 ³	100.0%	3,806	100.0%	2,741	100.0%

¹ Percentage of all cases within each age group

² Percentage of all cases within each gender category

³ Total cases less due to some missing age information

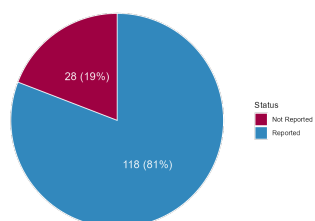
2.2 Summary Table of Incident Cases by the Top 10 Districts

Top 10 Districts Summary					
District	Total Cases	Total Deaths	Cases Last Epiweek	Deaths Last Epiweek	% Change in Cases ¹
Kampala District	2,618	16	4	0	−50.0%
Wakiso District	799	7	0	0	−100.0%
Mbarara City	597	4	2	0	−75.0%
Masaka City	266	3	1	0	−88.9%
Mukono District	252	2	4	0	NA
Hoima City	154	2	2	0	−75.0%
Lyantonde District	126	0	0	0	−100.0%
Nakasongola District	125	1	0	0	NA
Luwero District	108	0	0	0	NA
Kyotera District	74	0	1	0	0.0%

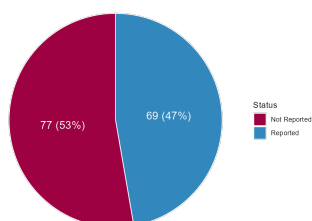
¹ The percentage change in cases is calculated by comparing the number of cases in the most recent epidemiological week to the previous epidemiological week.

2.3 Proportion of Affected Districts

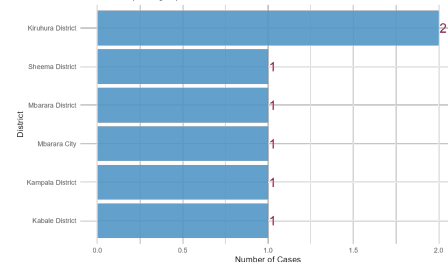
% of Districts that Reported Atleast 1 Case



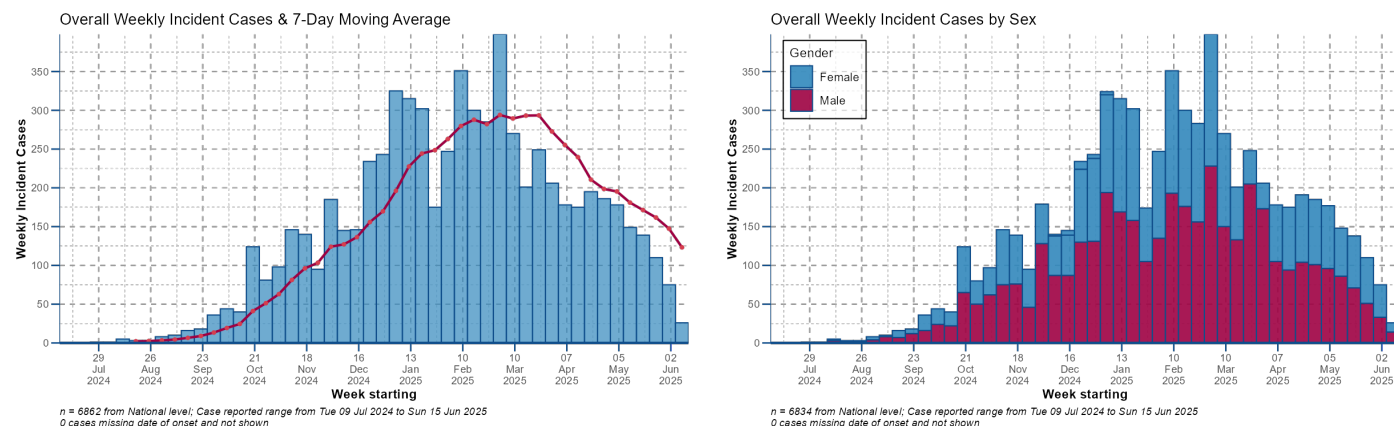
Proportion of Districts Reporting Cases in Last 21 Days



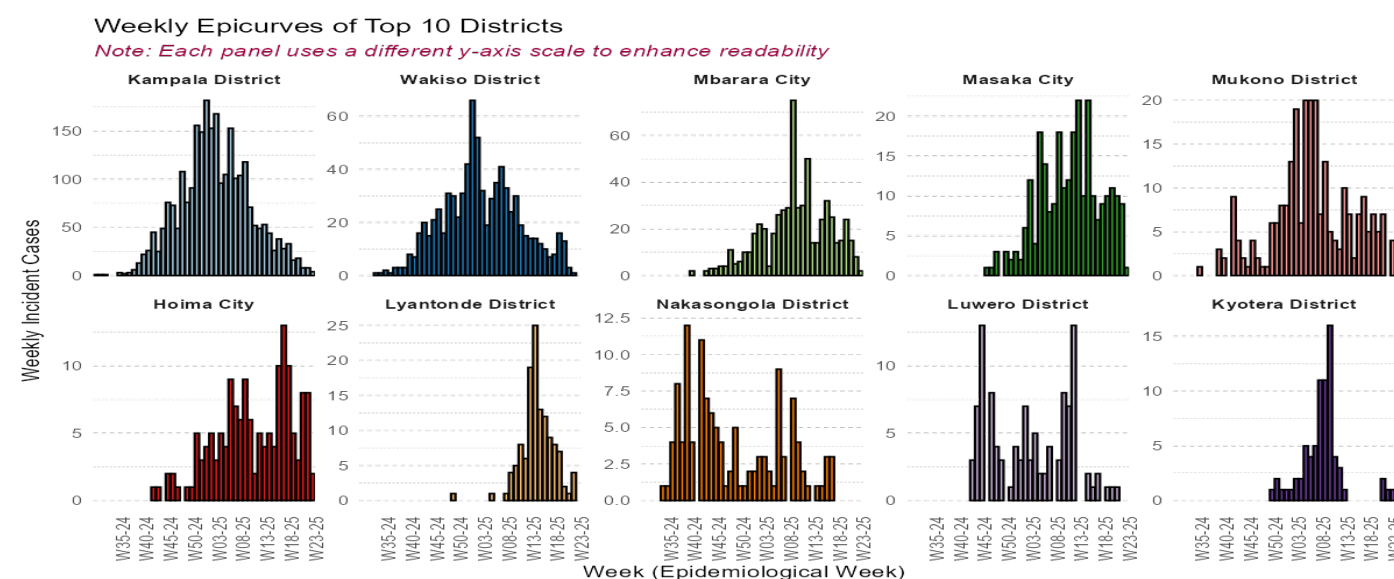
Districts Reporting Mpox Cases in the Last 24 Hours



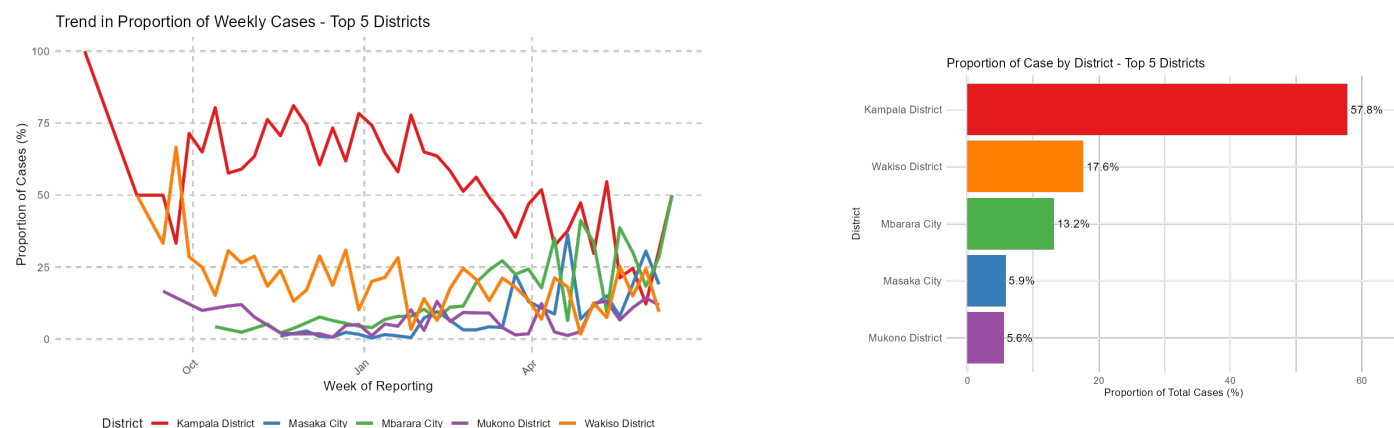
2.4 Overall Distribution of Incident Cases by Time



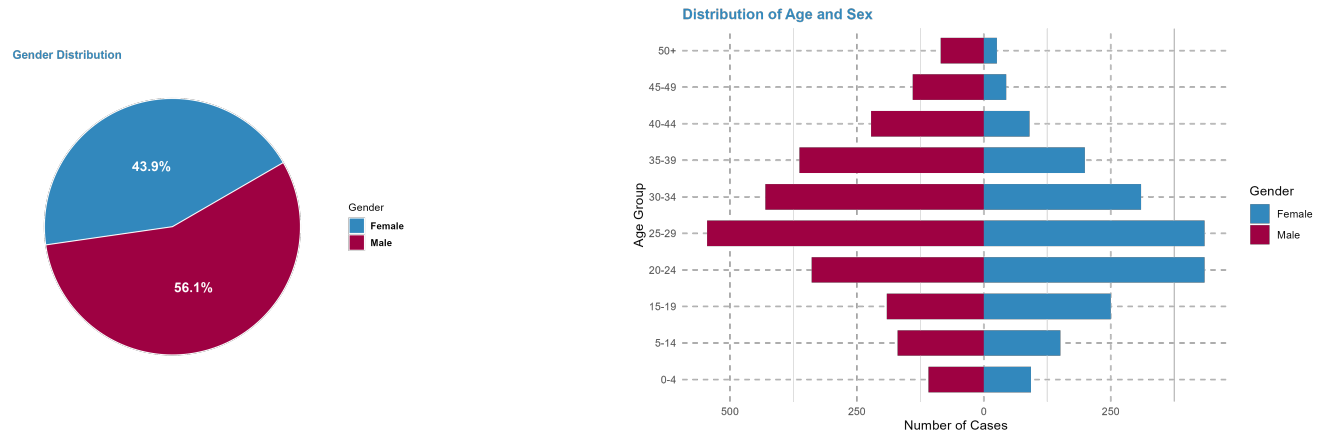
2.5 Epicurves of the Top 10 Districts



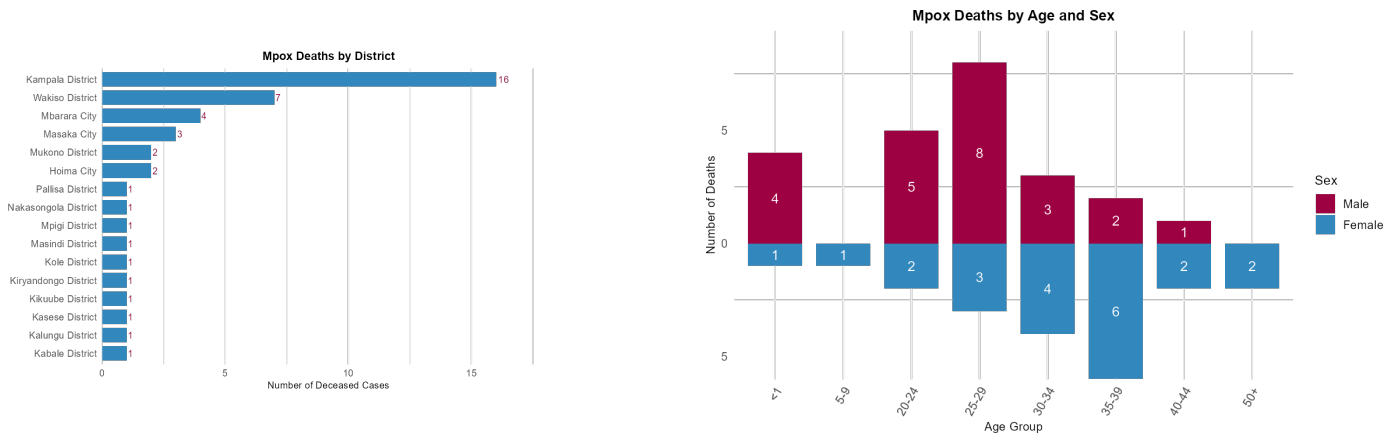
2.6 Overall Distribution of Incident Cases by Time



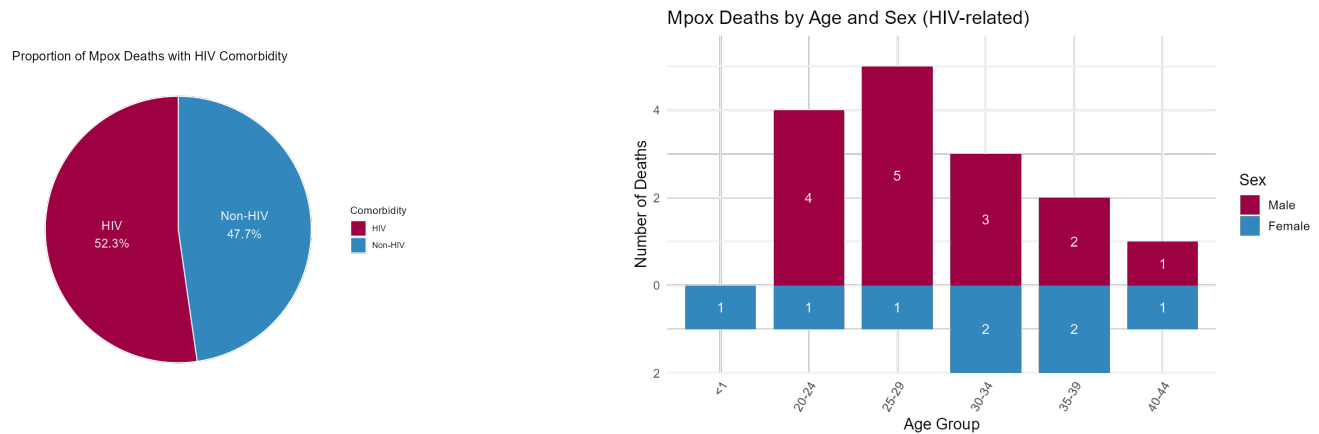
2.7 Overall Distribution of Incident Cases by Age and Sex



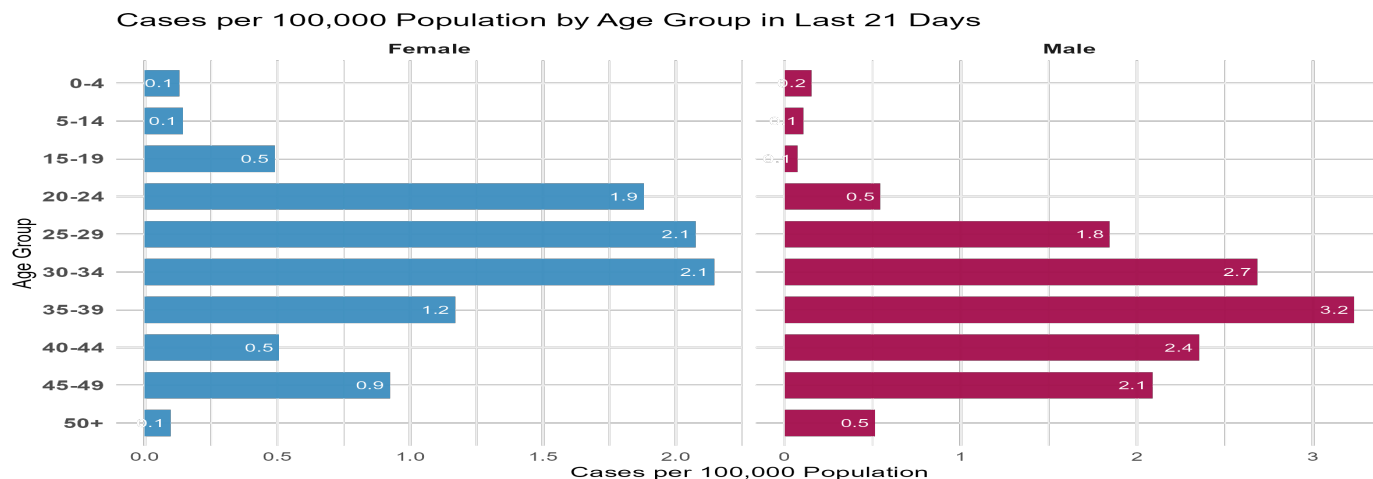
2.8 Overall Distribution of Deaths by Place and Sex - Age



2.9 Distribution of Deaths by HIV Status

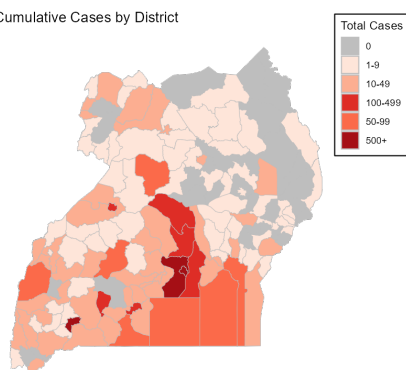


2.10 Overall Attack Rates by Age

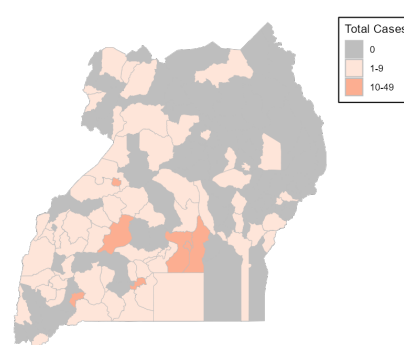


2.11 Distribution of Incident Cases by Place(Absolute Numbers)

Cumulative Cases by District

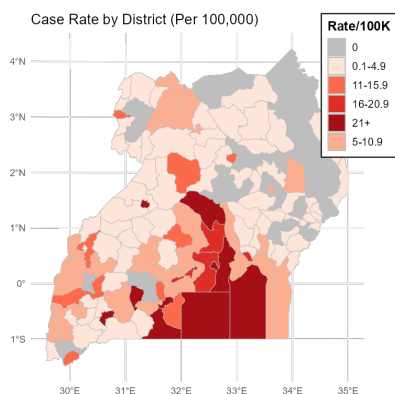


District Reporting Last 21 Days

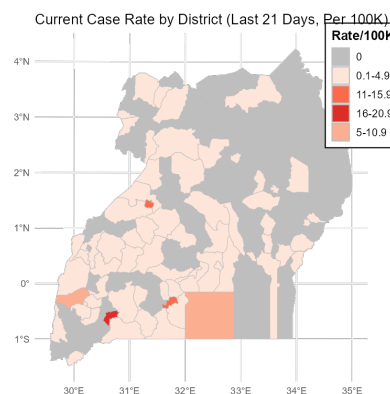


2.12 Attack Rates per 100K Population by Place

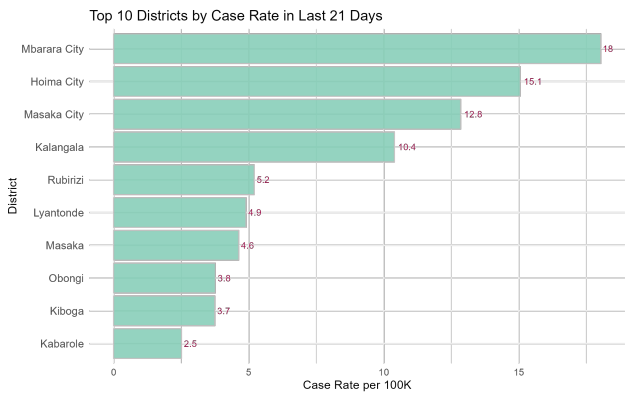
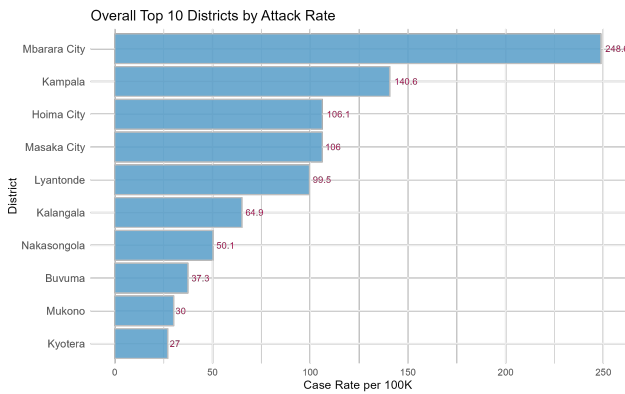
Case Rate by District (Per 100,000)



Current Case Rate by District (Last 21 Days, Per 100K)



2.13 Attack Rates per 100K Population by Place and Top 10 Districts



Contact Us

Twitter: @MinofHealthUG
Website: <https://health.go.ug/>
Talk to Us: 0800-100-066
Write to Us: helpdesk@health.go.ug

