

# WHO Virtual Training on Advanced Excel and QGIS

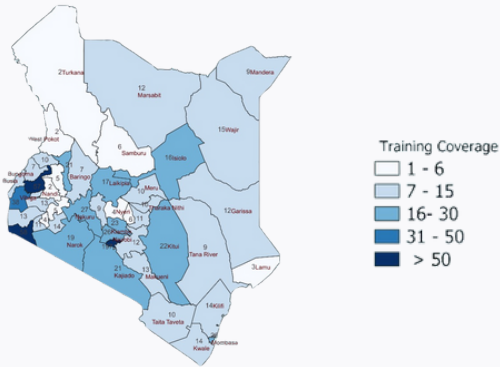
CONDUCTED FROM THE 24 MARCH TO 2 MAY 2025



## Registration

A total of **1,000 participants** from all **47 counties** registered for the training. **868** of these attended at least one training session

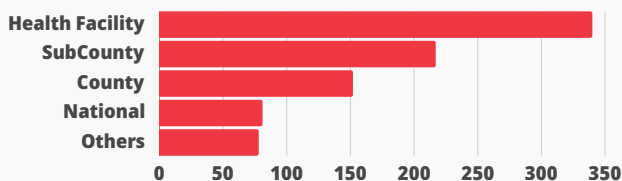
### Geographic Distribution of Training Participants:



## Place of Work

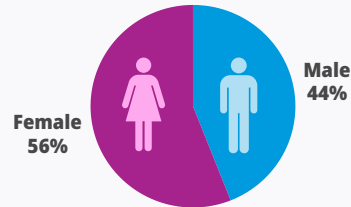
The training attracted participants from across the health sector with majority coming from all levels of the **public health facilities, sub-counties, counties and national level**.

The other group of training participants were drawn from various sectors, including NGOs, private health facilities, research institutions, other government institutions, and academia.



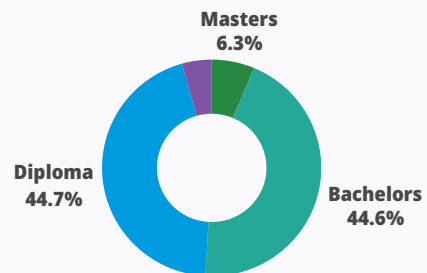
## Gender Distribution

**More than half** of the training participants were **women**, suggesting that females hold health records and information officer roles in greater numbers than **men**.

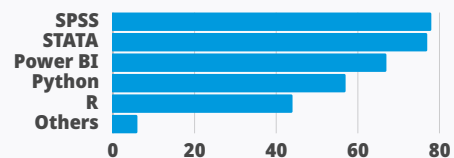


## Level of Education

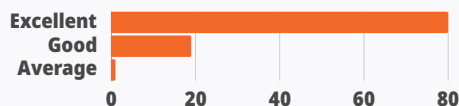
The **majority of participants** have either a **Diploma or a Bachelor's degree**, making these the most common education levels in the participants.



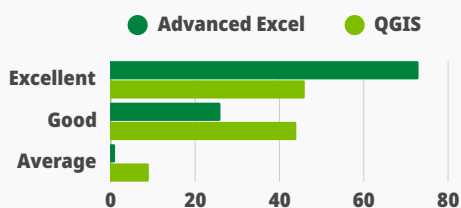
## Preferred Training Packages for Future Sessions



## Overall Rating of the Training



## Rating of Advanced Excel and QGIS



## Voices of Participants

“This data management training has been a game changer. Thank you

**Ezekiel Rauta,**  
Kajiado County

“Let's leverage this innovative approach to maximize reach and impact. Thank you to the facilitators!

**Abednego Nzau,**  
Machakos County

## Recommendations

- Adjust training times to suit diverse schedules and work commitments.
- Extend training duration or offer advanced follow-ups.
- Increase focus on practical exercises, case studies, and assignments.
- Provide extra resources, e.g., Excel formula shortcuts.
- Consider blended learning with both in-person and virtual options.
- Offer regular refresher courses.
- Implement training-of-trainers to scale impact.
- Address accessibility and consider low-bandwidth platforms like Zoom.
- Ensure ongoing capacity building beyond the current program.