



National Mpox Situation Report

1 Summary

Total Cases	New Last 24h	Number of Deaths	Case Fatality Rate (%)
6,479	10	44	0.68

Key Points:

- Epidemic remains active.** The epidemic remains active and evolving, with varying transmission dynamics across the country. While there is a notable decline in weekly incident cases, sustained transmission is ongoing in identified hotspots. To date **79% (115/146)** of districts reported at least one case since the beginning of the outbreak and **41% (60/146)** reporting new cases in the past **21 days**.
- Two additional Mpox-related deaths were reported.** A 24-year-old male from Buhweju District who was newly diagnosed with HIV and initiated on ART; and a 26-year-old male from Mbarara City admitted to Mbarara RRH on 7th May with moderate Mpox, known HIV-positive on ART, whose condition deteriorated and passed on 27th May 2025.
- High-risk mortality observed.** A total of **44 deaths** have occurred among confirmed cases, **over half (52.3%)** of whom were **co-infected with HIV**, underscoring vulnerabilities in this population. Persons co-infected with HIV had four times higher odds of severe Mpox disease.
- Young adults are disproportionately affected.** Attack rates are highest among **females aged 25–29 (2.7/100,000)**. In the last 3 weeks, there has been a shift in the most affected among males from 35–39 to males aged 44–49 (**4.1/100,000**). This may be indicative of a shift in the transmission dynamics among males.

Weekly and Cumulative Confirmed Mpox Cases¹

Year	Epi Week	Weekly Confirmed Cases	Cumulative Confirmed Cases	Percent Change (%)
2025	13	247	4880	5.33
2025	14	272	5152	5.57
2025	15	234	5386	4.54
2025	16	177	5563	3.29
2025	17	160	5723	2.88
2025	18	217	5940	3.79
2025	19	233	6173	3.92
2025	20	148	6321	2.40
2025	21	144	6465	2.28
2025	22	14	6479	0.22

¹ This is data for the last 10 Epiweeks. % Week-on-Week Change

2 Surveillance and Epidemiology

2.1 Summary Table of Incident Cases by Age and Sex

Cases by Age Group and Gender							
Distribution across demographics							
Age Group		Total Cases	% of Cases ¹	Males	% of All Males ²	Females	% of All Females ²
	0-4	278	4.5%	158	4.3%	120	4.7%
	5-9	253	4.1%	145	4.0%	108	4.2%
	10-14	178	2.9%	97	2.7%	81	3.2%
	15-19	604	9.7%	293	8.1%	311	12.1%
	20-24	1,042	16.8%	492	13.5%	550	21.4%
	25-29	1,299	20.9%	736	20.2%	563	21.9%
	30-34	974	15.7%	601	16.5%	373	14.5%
	35-39	745	12.0%	504	13.9%	241	9.4%
	40-44	429	6.9%	302	8.3%	127	4.9%
	45-49	241	3.9%	179	4.9%	62	2.4%
	50+	161	2.6%	129	3.5%	32	1.2%
sum	—	6,204 ³	100.0%	3,636	100.0%	2,568	100.0%

¹ Percentage of all cases within each age group

² Percentage of all cases within each gender category

³ Total cases less due to some missing age information

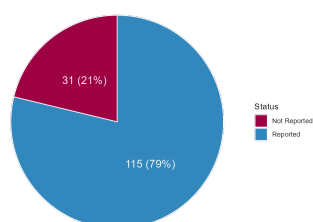
2.2 Summary Table of Incident Cases by the Top 10 Districts

Top 10 Districts Summary					
District	Total Cases	Total Deaths	Cases Last Epiweek	Deaths Last Epiweek	% Change in Cases ¹
Kampala District	2,588	16	9	0	-40.0%
Wakiso District	776	7	4	0	-66.7%
Mbarara City	552	4	8	0	-38.5%
Mukono District	232	2	0	0	-100.0%
Masaka City	229	3	0	0	-100.0%
Hoima City	132	2	1	0	-75.0%
Nakasongola District	124	1	0	0	NA
Lyantonde District	120	0	1	0	-85.7%
Luwero District	107	0	1	0	0.0%
Kyotera District	70	0	0	0	NA

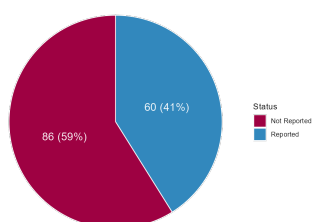
¹ The percentage change in cases is calculated by comparing the number of cases in the most recent epidemiological week to the previous epidemiological week.

2.3 Proportion of Affected Districts

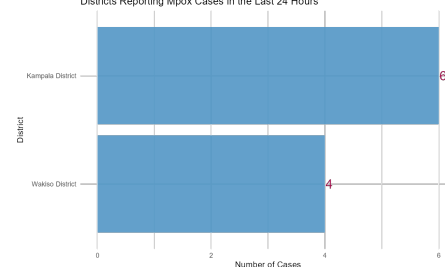
% of Districts that Reported Atleast 1 Case



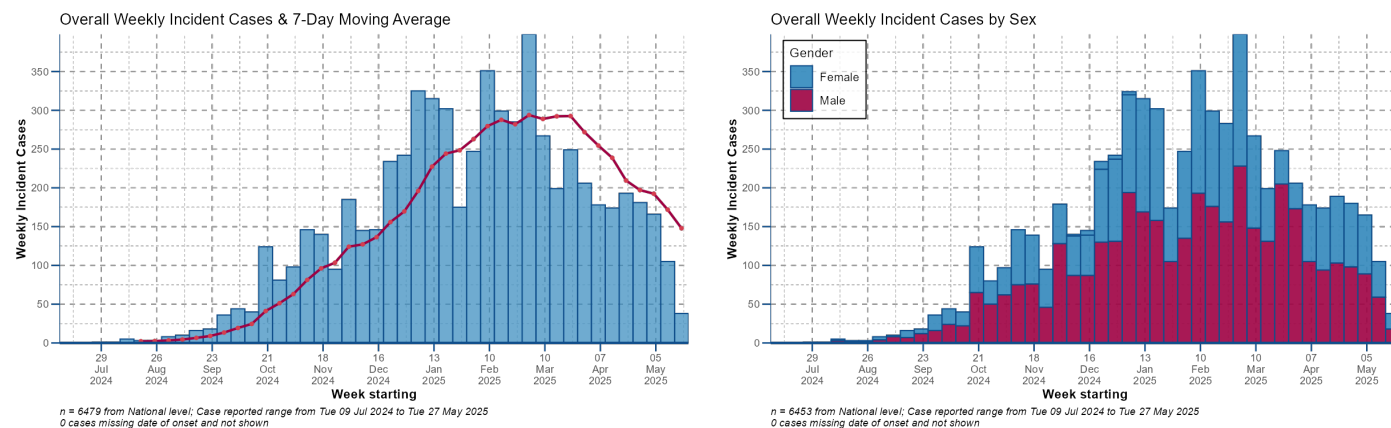
Proportion of Districts Reporting Cases in Last 21 Days



Districts Reporting Mpox Cases in the Last 24 Hours



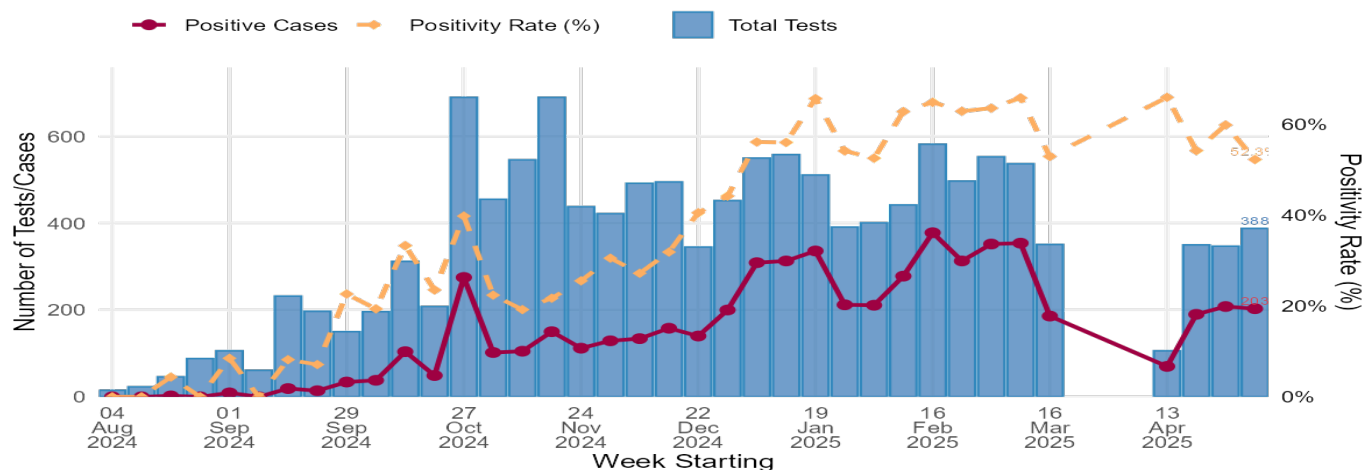
2.4 Overall Distribution of Incident Cases by Time



2.5 Testing Rates

Weekly Mpox Testing Results

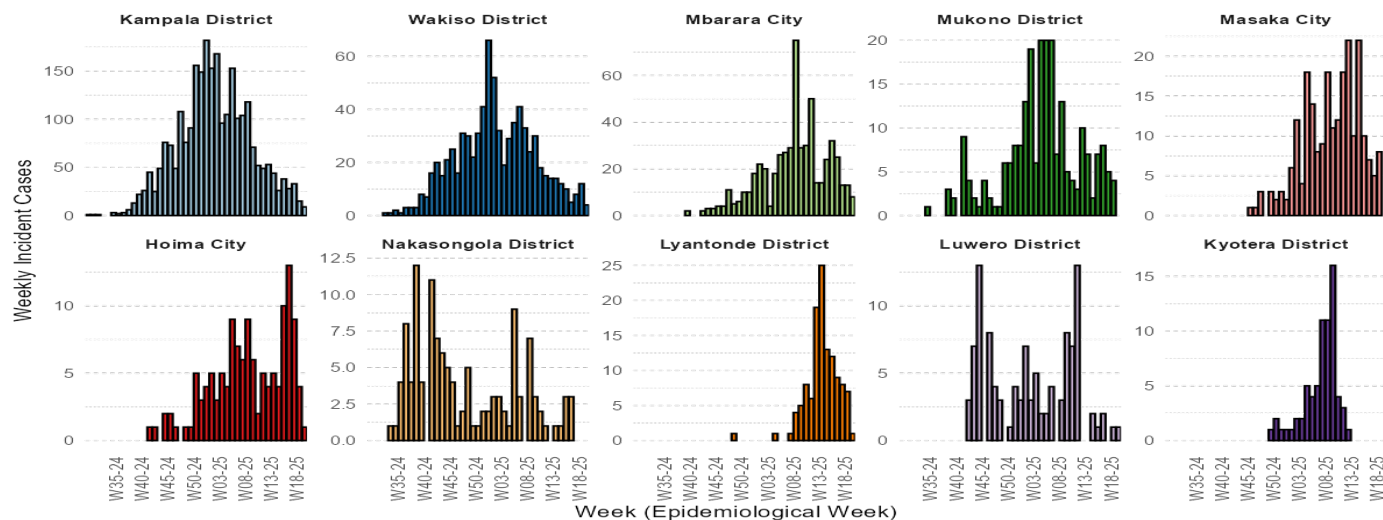
Total tests, positive cases, and positivity rate



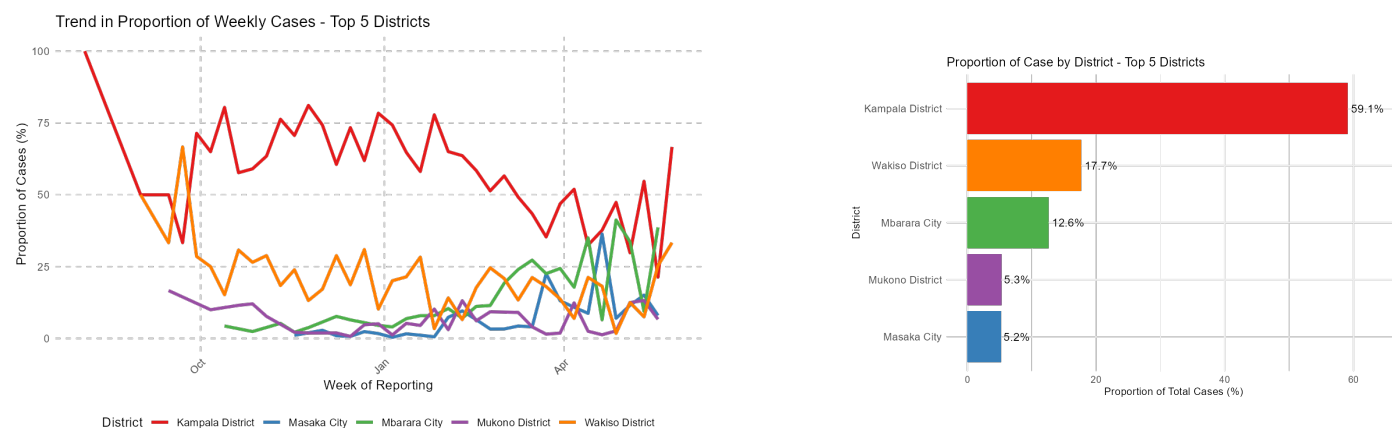
2.6 Epicurves of the Top 10 Districts

Weekly Epicurves of Top 10 Districts

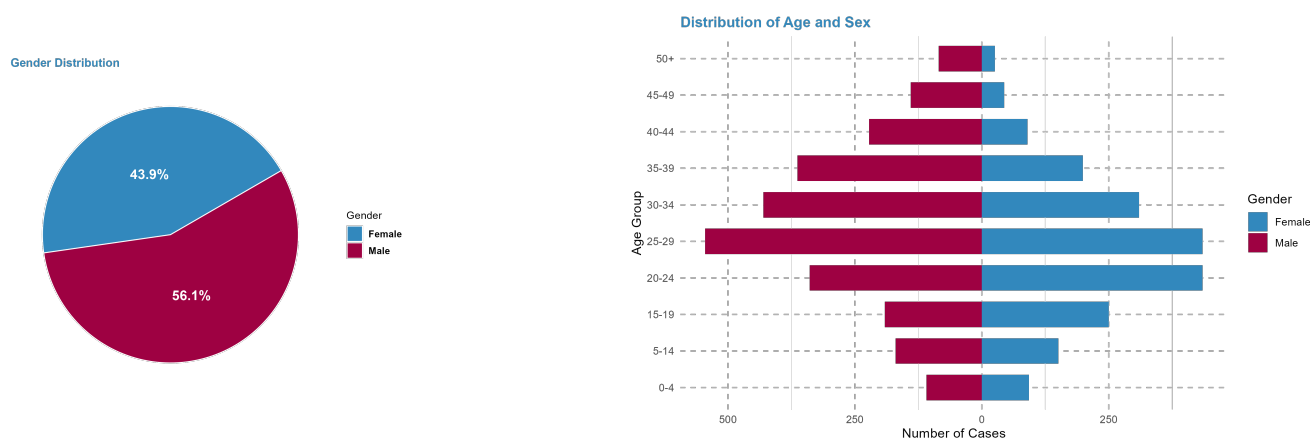
Note: Each panel uses a different y-axis scale to enhance readability



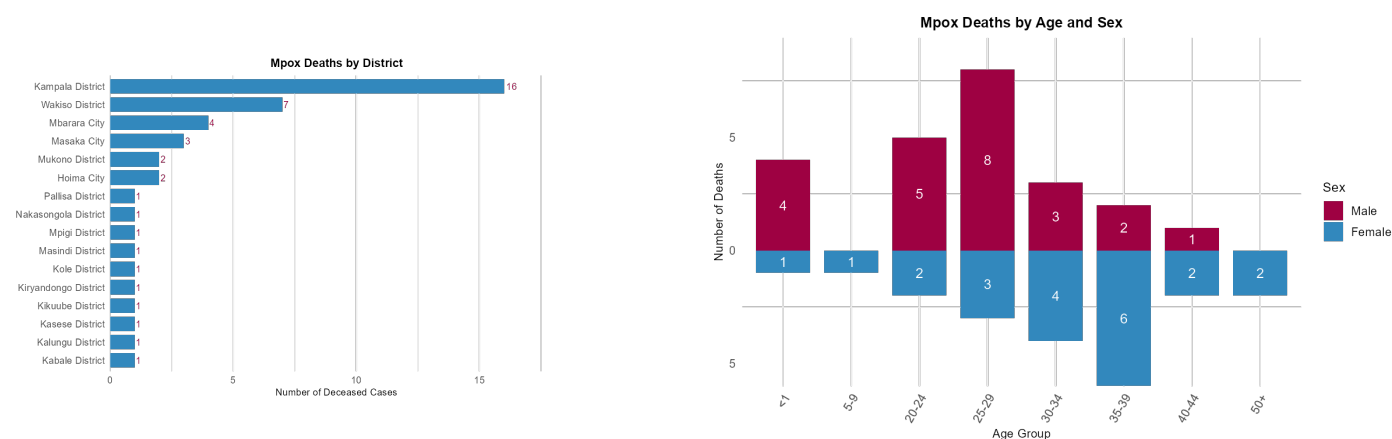
2.7 Overall Distribution of Incident Cases by Time



2.8 Overall Distribution of Incident Cases by Age and Sex



2.9 Overall Distribution of Deaths by Place and Sex - Age

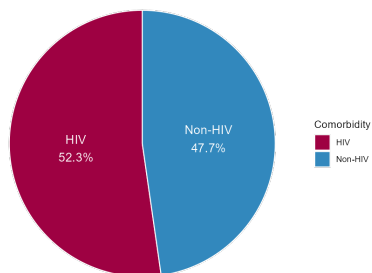


New death

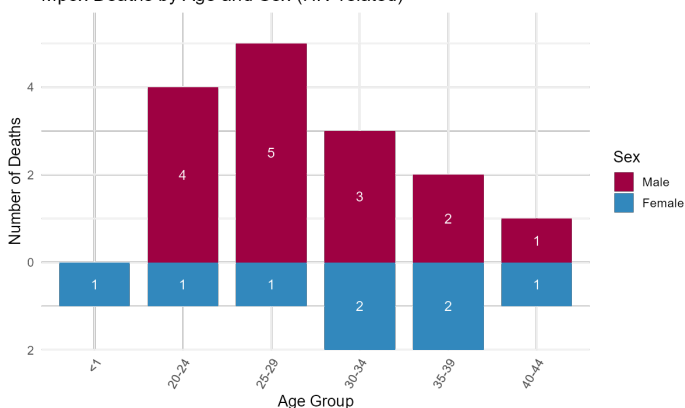
Two additional Mpox-related deaths were reported. A 24-year-old male from Buhweju District who was newly diagnosed with HIV and initiated on ART; and a 26-year-old male from Mbarara City admitted to Mbarara RRH on 7th May with moderate Mpox, known HIV-positive on ART, whose condition deteriorated and passed on 27th May 2025.

2.10 Distribution of Deaths by HIV Status

Proportion of Mpox Deaths with HIV Comorbidity

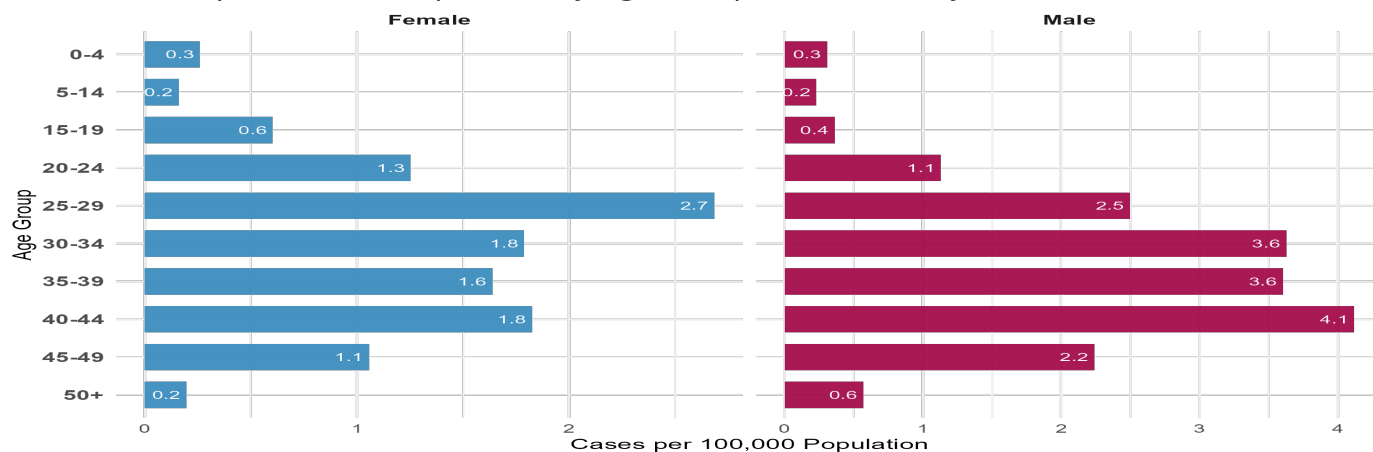


Mpox Deaths by Age and Sex (HIV-related)



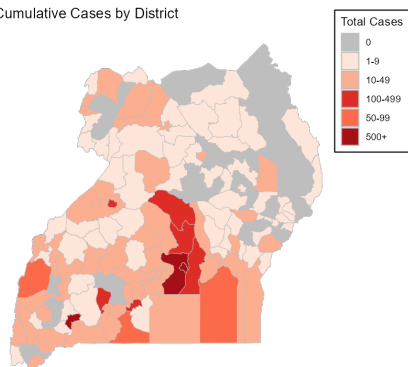
2.11 Overall Attack Rates by Age

Cases per 100,000 Population by Age Group in Last 21 Days

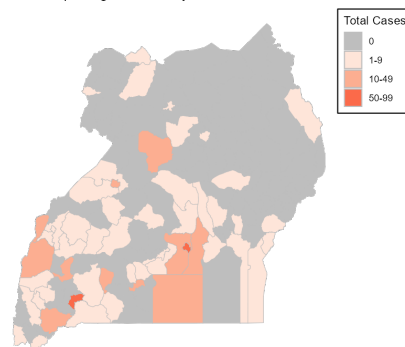


2.12 Distribution of Incident Cases by Place(Absolute Numbers)

Cumulative Cases by District



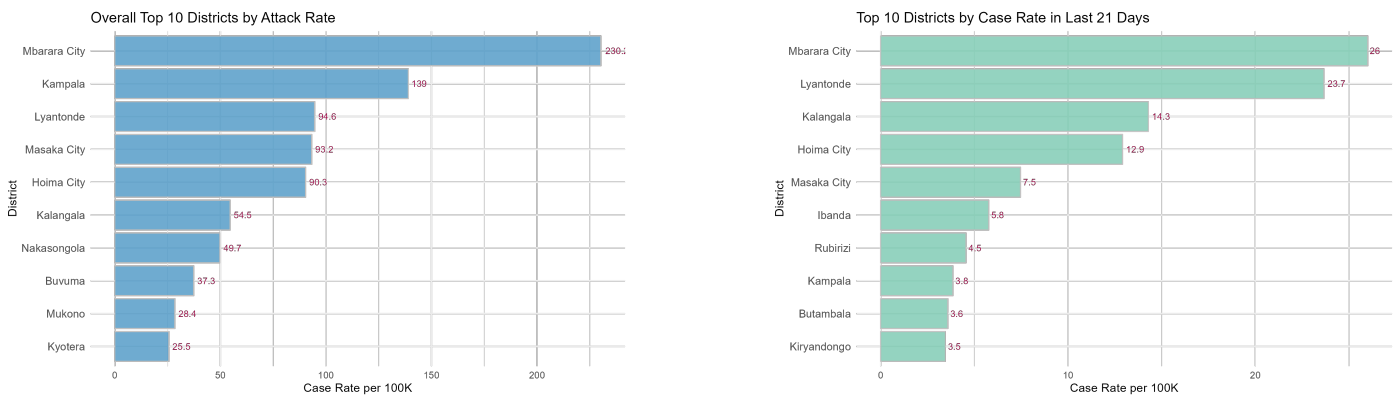
District Reporting Last 21 Days



2.13 Attack Rates per 100K Population by Place



2.14 Attack Rates per 100K Population by Place and Top 10 Districts



3 Laboratory Testing

Tests:

The average weekly number of tests conducted was 550 between October 2024 and March 2025. However, there has been a marked decline in testing since March 10, 2025 (refer to chart in Section 2.5). This decline in testing coincides with a reduction in weekly incident cases (refer to epicurves in Section 2.4).

Positivity:

Despite the reduction in testing, the test positivity rate has remained stable at 60% from January 19, 2025 to date. However, this dropped to 52.3% in Epiweek 20

4 Vaccination

Phase I and II:

The first and second phases of the targeted vaccination strategy, interventions focused on peer-to-peer engagement for key populations, deployment of mobile vaccination teams, and training of vaccination and mobilization personnel. These efforts prioritized five hotspot districts—Kampala, Wakiso, Buvuma, Mbarara City, and Hoima City—ensuring high-risk populations were effectively reached. As a result, vaccine coverage reached 98% in targeted areas, with a utilization rate of 66%. Currently, 37,610 doses remain in stock.

Phase III:

The Ministry of Health will commence Phase III of the Mpxv vaccination campaign. Preparatory activities will begin with the training of mobilization and vaccination teams scheduled for 22nd–23rd May 2025. This will be followed by a seven-day vaccination exercise from 26th May 2025, targeting five high-priority districts: Kyotera, Masaka City, Lyantonde, Kalangala, and Mukono.

Contact Us

Twitter: @MinofHealthUG
Website: <https://health.go.ug/>
Talk to Us: 0800-100-066
Write to Us: helpdesk@health.go.ug

