

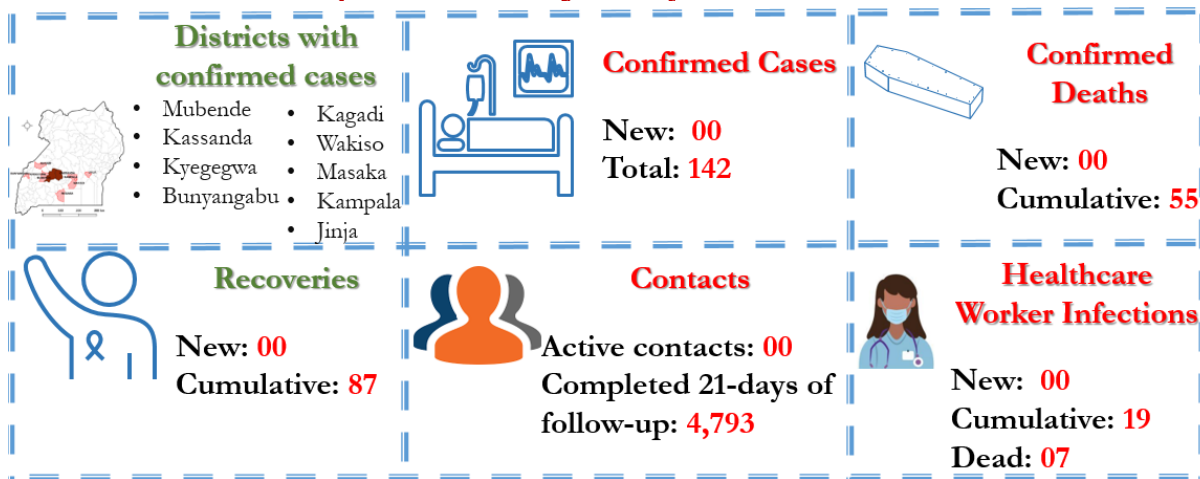
# EBOLA VIRUS DISEASE

## Republic of Uganda



### Situation Report 91

Data update as of 9<sup>th</sup> January 2023 at 22 :00 HRS



### Background

On 20<sup>th</sup> September 2022, the Ministry of Health declared an outbreak of Sudan Ebola Virus (SVD) after a case managed at Mubende Regional Referral Hospital (MRRH) in Mubende district was confirmed through testing at the Uganda Virus Research Institute (UVRI). This followed investigations by the National Rapid Response Team of suspicious deaths that had occurred in the district earlier in the month. This is the first time in more than a decade that Uganda reports an outbreak of Sudan ebolavirus

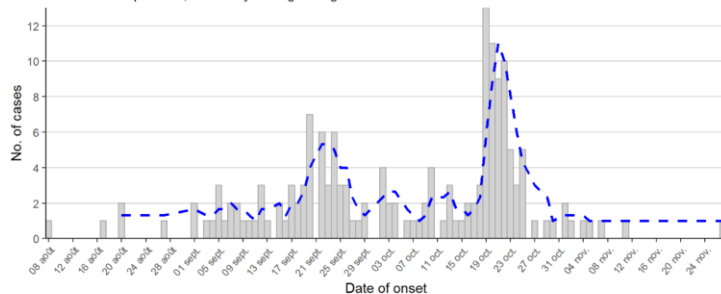
## Key Highlights

Today marks 115 days of responding to the EVD outbreak and 41 days since the last confirmed case was buried.

- ➔ Within the past 24 hours, no new confirmed case or death was registered; there was no recovery.
- ➔ Case Fatality Ratio (CFR) among confirmed cases still stands 55/142 (39%).
- ➔ No active contacts are currently under follow-up.

### Daily case incidence

Confirmed and probable, with 3-day moving average

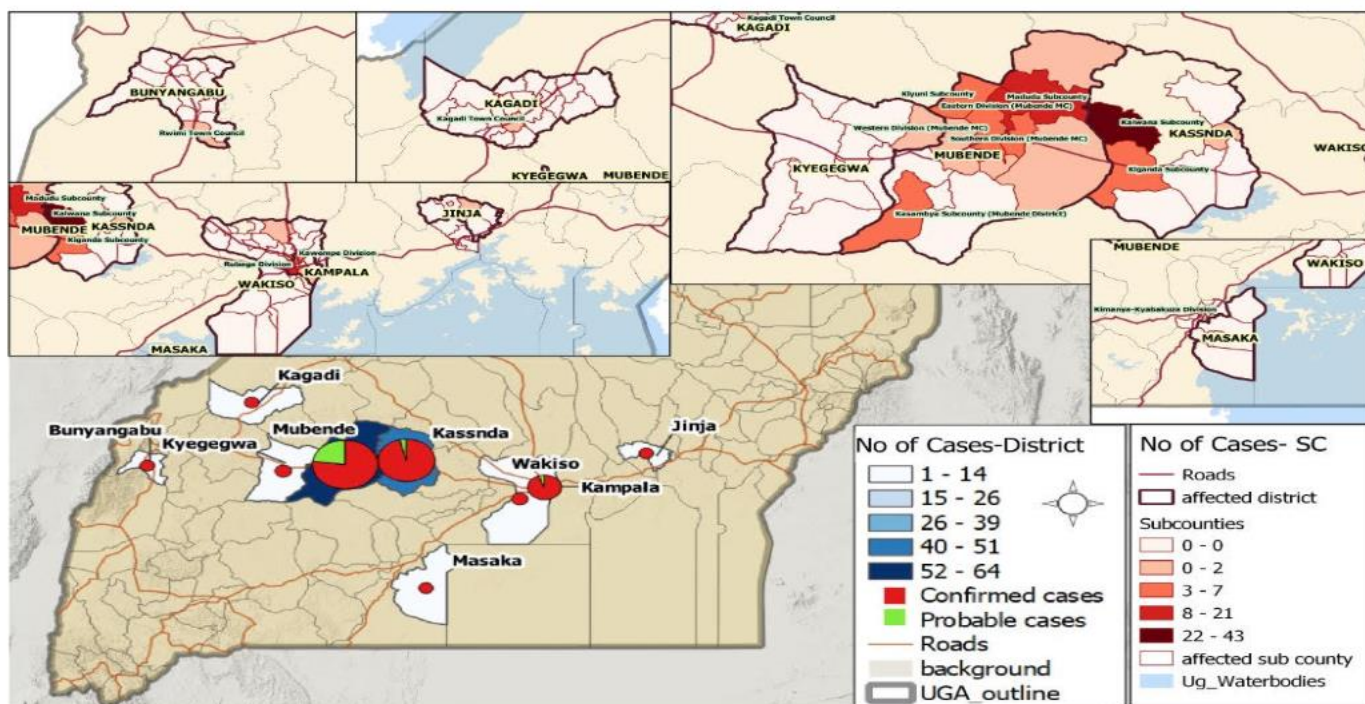


## Summary of Cases as of 9<sup>th</sup> January 2023 at 22:00 HRS

	Last 24 Hours									
	MUB	KYE	KAS	KAG	MSK	WAK	JJA	KLA	BUN	Total
Confirmed Cases	00	00	00	00	00	00	00	00	00	00
Confirmed Deaths	00	00	00	00	00	00	00	00	00	00
Recoveries	00	00	00	00	00	00	00	00	00	00
	Cumulative									
Confirmed Cases	64	04	49	01	01	04	01	17	01	142
Deaths										
Confirmed	29	01	20	01	01	00	01	02	00	55
Probable	19	00	02	00	00	00	00	01	00	22
Days since last confirmed case	57	73	43	103	69	64	58	56	100	-
Recoveries	38	03	26	00	00	03	00	16	01	87
Confirmed HCW										
Confirmed	14	00	01	01	00	00	00	02	01	19
Deaths	6	00	00	01	00	00	00	00	00	07

Table Acronyms: MUB=Mubende, KYE=Kyegegwa, KAS=Kassanda, KAG=Kagadi, WAK = Wakiso, KLA = Kampala, MSK = Masaka, JJA = Jinja, BUN=Bunyangabu, HCW=Healthcare Worker

## Place analysis of affected persons by district as of 9<sup>th</sup> January 2023 at 22:00 HRS



## Alert Management, POE Surveillance, and Burials summaries as of 9<sup>th</sup> January 2023 at 22:00 HRS

Updated 09Jan23 at 22:00 hrs	Last 24 Hours															
	MUB	KAS	KMA	MSK	JJA	Total	Points of Entry Surveillance	BUSIA	BUSUNGA	MALABA	KATUNA	ELEGU	TRANSAMI, HAIBALE	MUTUKULA	MPONDWE	Total
EVD Alerts	7	0	-	-	-	7	# Crossing people screened	5825	706	1,497	637	1,414	109	657	3,568	14,413
Alerts Verified	7	0	-	-	-	7	# Crossing Vehicles	23	3	27	97	189	0	17	30	386
Alerts meeting suspect case definition	2	0	-	-	-	2	Cars	40	5	265	114	138	12	43	56	653
Alerts evacuated	2	0	-	-	-	2	Trucks	0	0	0	0	0	0	0	0	-
							# Health alerts raised	0	0	0	0	0	0	0	0	-
							# Health alerts investigated	0	0	0	0	0	0	0	0	-
All death alerts received	5	3	-	-	-	8	# Alerts meeting EVD suspect case definition	0	0	0	0	0	0	0	0	-
Verified Death Alerts	5	3	-	-	-	8	# EVD suspected cases referred	0	0	0	0	0	0	0	0	-
SDBs undertaken	6	3	-	-	-	9	# People reached with EVD information	476	487	-	579	219	88	-	-	1,849
- Backlog cases today	1	0	-	-	-	1										-
- Samples collected	5	3	-	-	-	8										-
Cumulative SDBs undertaken	555	445	53	36	8	1097										-
Samples tested by the lab (suspects, rebleed, swabs)						0										-
	<b>Cumulative</b>															
	MUB	KAS	KMA	MSK	JJA	KYE	KAK	KAG	FPC	LUW	NAK	NTG	MTN	MTM	BUN	Total
Contacts listed	2,190	1,037	534	163	527	70	67	23	3	5	8	20	82	16	48	4,793
Contacts completed 21 days of follow-up	2,190	1,037	534	163	527	70	67	23	3	5	8	20	82	16	48	4,793

**Table Acronyms:** MUB=Mubende, KYE=Kyegegwa, FPC= Fort Portal City, KAS=Kassanda, KAG=Kagadi, KMA = Kampala Metropolitan (Kampala + Wakiso), BUN = Bunyangabu, KAK = Kakumiro, NAK = Nakasongola, LUW = Luweero, MTN = Mityana, MTM = Mitooma, NTG = Ntungamo, MSK = Masaka, JJA = Jinja

### Actions to date

The Ministry of Health (MoH), Districts, and partners in Uganda are implementing several outbreak control interventions in Mubende and other affected districts to contain the disease spread. An overview of key activities is summarized below:

#### Response Pillar

#### Key Updates in the past 24 hours

<i>Coordination</i>	<ul style="list-style-type: none"> <li>➤ The End of the 2022 Ebola Sudan Virus Disease outbreak is set to be declared tomorrow 11 January 2023 in Mubende District</li> <li>➤ Plans for de-escalation of response activities undergoing in all affected districts.</li> </ul>
<i>Surveillance &amp; Contact tracing</i>	<ul style="list-style-type: none"> <li>➤ The total alerts validated in the past 24 hours were seven from Mubende District; two met the suspected case definition.</li> <li>➤ A total of 14,413 individuals were screened at 10 Points of Entry (POEs), where no health alerts were raised.</li> <li>➤ Active case search was performed in 33 healthcare facilities in Mubende and 38 in Kassanda.</li> </ul>
<i>Case Management</i>	<ul style="list-style-type: none"> <li>➤ Zero confirmed cases on admission currently, routine patient care services are ongoing in all ETUs.</li> <li>➤ In the past 24 hours, two beds in the suspected wards of the New ETU Mubende were occupied.</li> </ul>
<i>Emergency Medical Services (EMS)</i>	<ul style="list-style-type: none"> <li>➤ In the past 24-hrs, two evacuations were made in Mubende..</li> </ul>
<i>Safe &amp; Dignified Burials</i>	<ul style="list-style-type: none"> <li>➤ Within the past 24 hours, a total of 8 death alerts were verified from Mubende and Kassanda.</li> <li>➤ Conducted nine safe and dignified burials in Mubende and Kassanda within the past 24 hours and eight samples were collected.</li> <li>➤ One backlog case was reported in Mubende within the past 24 hours</li> <li>➤ Cumulative SDBs conducted in Mubende: 555, Kassanda: 445, KMA:53, Masaka:36 and eight in Jinja</li> </ul>
<i>Mental Health &amp; Psychosocial Social Support</i>	<ul style="list-style-type: none"> <li>➤ <b>SURVIVOR FOLLOW-UP:</b> Four families of Ebola victims were visited for psychotherapy and grief counseling and seven clients of reproductive age were offered sex education with an emphasis on condom use.</li> </ul>

\*Category 2 districts include high-risk districts namely Kakumiro, Mityana, Mpigi, Kiboga, Kibaale, Kyankwanzi, Gomba, Sembabule Kazo, Kyenjojo, Kabarole, Kamwenge, Fort Portal City and Mukono whereas Category 3 include moderate-risk district which include the rest of the country

### Key messages to the public

- People in the community should call an alert hotline or go to a health facility if they have symptoms (e.g., fever, headache, weakness, vomiting, bloody diarrhoea or urine, bleeding from body openings).

- Hotline numbers are: **0800200043** for Mubende and Kassanda; **0800299000** for Kampala Metropolitan Area, **0800300043** for Masaka, **0800355411** for Kagadi all toll-free, **0800300046** for Jinja, and **0787437139** for Bunyangabu (not toll-free).
- Free alert SMS on **6767** starting with the 'ALERT' key word; Free alert SMS to U-report on 8500
- Community should not fear people who have been discharged from the ETU and returned home.