

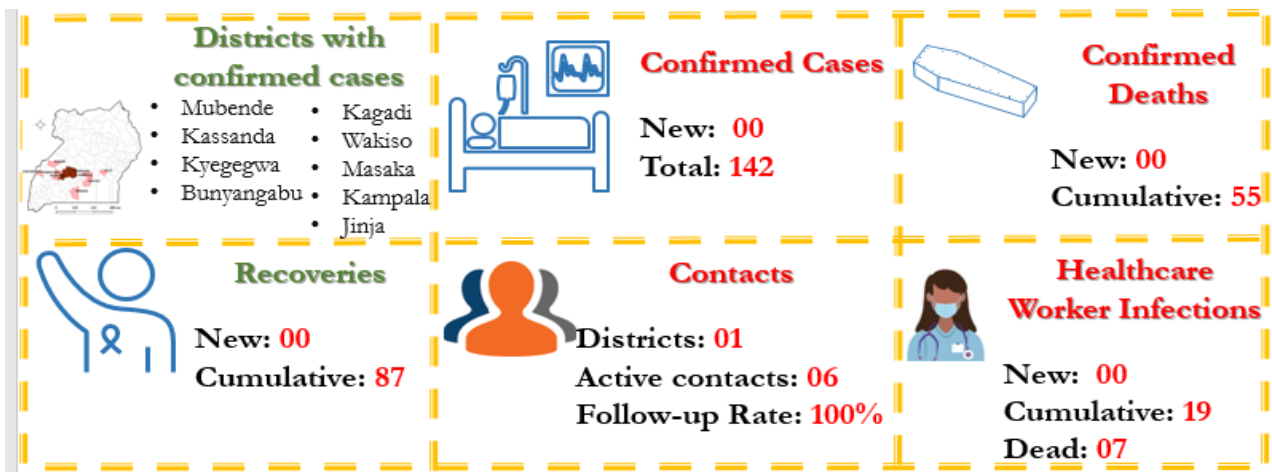
# EBOLA VIRUS DISEASE

Republic of Uganda



## Situation Report 74

Data update as of 14<sup>th</sup> December 2022 at 22 :00 HRS



### Background

On 20<sup>th</sup> September 2022, the Ministry of Health declared an outbreak of Sudan Ebola Virus (SVD) after a case managed at Mubende Regional Referral Hospital (MRRH) in Mubende district was confirmed through testing at the Uganda Virus Research Institute (UVRI). This followed investigations by the National Rapid Response Team of suspicious deaths that had occurred in the district earlier in the month. This is the first time in more than a decade that Uganda reports an outbreak of Sudan ebolavirus

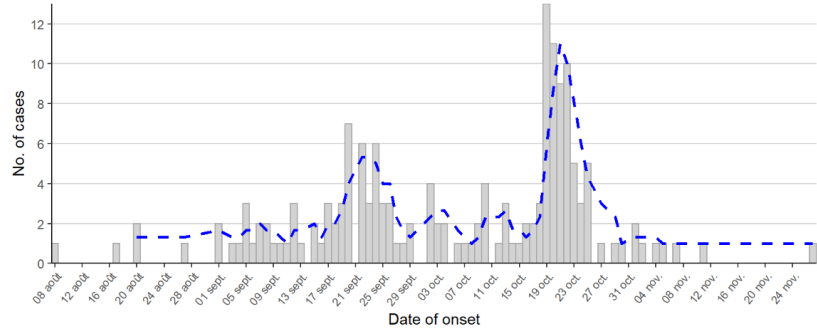
## Key Highlights

Today marks 89 days of responding to the EVD outbreak, and 17 days since the last confirmed case.

- ➔ Within the past 24 hours, there was no new confirmed case or death registered; there was no recovery.
- ➔ Case Fatality Ratio (CFR) among confirmed cases still stands 55/142 (39%).
- ➔ Six contacts actively being followed-up in Kassanda District, follow-up rate in the past 24 hours was 100%.

### Daily case incidence

Confirmed and probable, with 3-day moving average

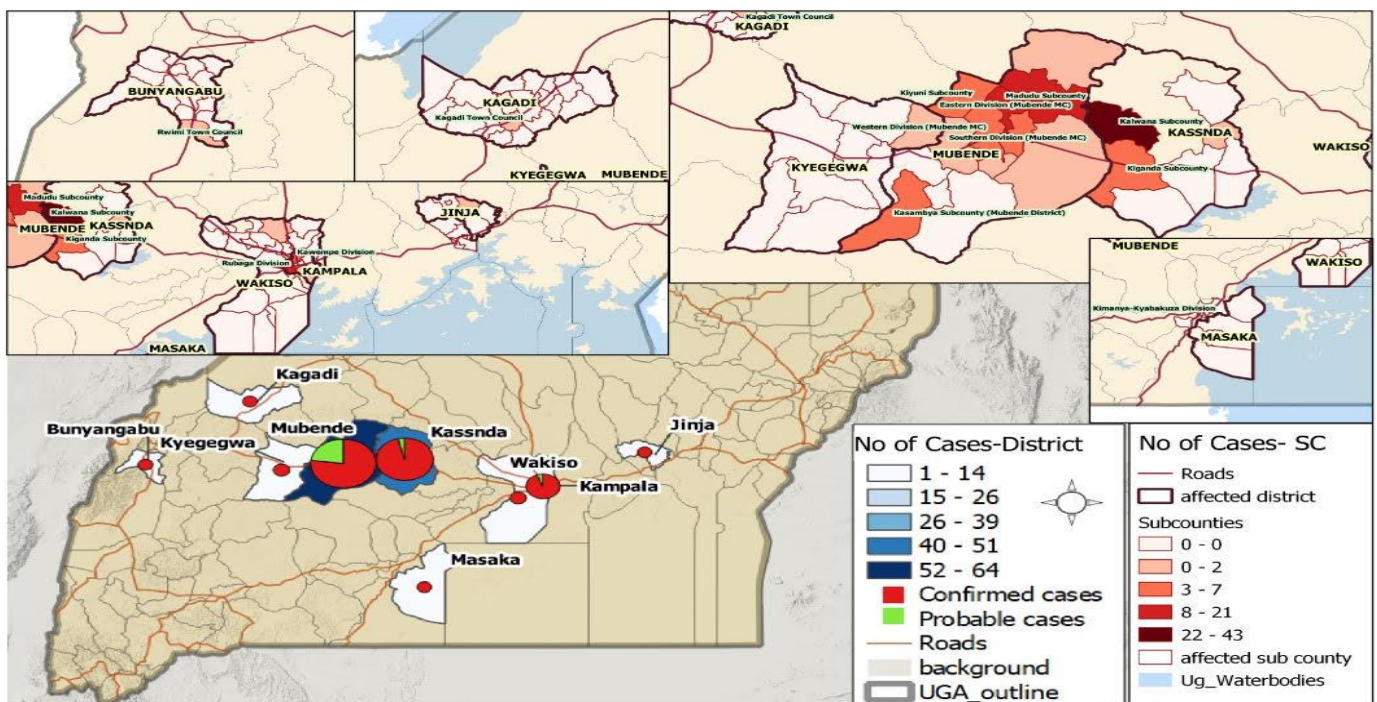


## Summary of Cases as of 14<sup>th</sup> December 2022 at 22:00 HRS

	Last 24 Hours									
	MUB	KYE	KAS	KAG	MSK	WAK	JJA	KLA	BUN	Total
Confirmed Cases	00	00	00	00	00	00	00	00	00	00
Confirmed Deaths	00	00	00	00	00	00	00	00	00	00
Recoveries	00	00	00	00	00	00	00	00	00	00
Cumulative										
Confirmed Cases	64	04	49	01	01	03	01	18	01	142
Deaths										
Confirmed	29	01	20	01	01	00	01	02	00	55
Probable	19	00	02	00	00	00	01	00	00	22
Days since last confirmed case	31	47	17	77	43	38	32	30	74	-
Recoveries	38	03	26	00	00	03	00	16	01	87
Confirmed HCW										
Confirmed	14	00	01	01	00	00	00	02	01	19
Deaths	6	00	00	01	00	00	00	00	00	07

Table Acronyms: MUB=Mubende, KYE=Kyegegwa, KAS=Kassanda, KAG=Kagadi, WAK = Wakiso, KLA = Kampala, MSK = Masaka, JJA = Jinja, BUN=Bunyangabu, HCW=Healthcare Worker

## Place analysis of affected persons by district as of 14<sup>th</sup> December 2022 at 22:00 HRS



## Alert Management, Evacuations, Burials summaries as of 14<sup>th</sup> December 2022 at 22:00 HRS

Updated 14Dec22 at 22:00 hrs							Last 24 Hours								
	MUB	KAS	KMA	MSK	JJA	Total	MUB	KAS	KMA	MSK	JJA	Total			
EVD Alerts	48	15		14	13	90	EMS Ambulance fleet	10	6	4	3	1	24		
Alerts Verified	30	15		2	9	56	EMS alerts handled	19	6	0	1	0	26		
Alerts meeting suspect case definition	11	2		1	1	15	EMS evacuations - ALL	17	6	0	1	0	24		
Alerts evacuated	10	2		1	0	13	- to ED	1	5	0	0	0	6		
All death alerts received	9	3		1	4	17	- to ETU	0	0	0	1	0	1		
Verified Death Alerts	9	3		0	0	12	- to Madudu	1	0	-	-	-	1		
SDBs undertaken	4	2		0	0	6	- to Annex, MOW	9	1	-	-	-	10		
- Backlog cases today	5	1		0	0	6	- declined	1	0	0	0	0	1		
- Samples collected	9	3		0	0	12	Triage Category - Red	0	1	0	0	0	1		
Cumulative SDBs undertaken	399	316		0	8	723	- Yellow	5	1	0	0	0	6		
Samples tested (suspects, rebleed, swabs)	16	7	11	0	4	38	- Green	6	4	0	0	0	10		
							Cumulative Evacuations								
							EVD	1,223	339	38	42	30	1,672		
							Non-EVD	1,012	525				1,537		
	<b>Cumulative</b>														
	MUB	KAS	KMA	MSK	JJA	KYE	KAK	KAG	FPC	LUW	NAK	NTG	MTN	MTM	BUN
Contacts listed	2,190	1,037	534	163	527	70	67	23	3	5	8	20	82	16	48
Contacts completed 21 days of follow-up	2,105	850	534	163	527	67	67	23	3	5	8	20	82	16	48

**Table Acronyms:** MUB=Mubende, KYE=Kyegegwa, FPC= Fort Portal City, KAS=Kassanda, KAG=Kagadi, KMA = Kampala Metropolitan (Kampala + Wakiso), BUN = Bunyangabu, KAK = Kakumiro, NAK = Nakasongola, LUW = Luweero, MTN = Mityana, MTM = Mitooma, NTG = Ntungamo, MSK = Masaka, JJA = Jinja

### Actions to date

The Ministry of Health (MoH), Districts, and partners in Uganda are implementing several outbreak control interventions in Mubende and her surrounding districts to contain the disease spread. An overview of key activities is summarized below:

#### Response Pillar

#### Key Updates in the past 24 hours

<i>Coordination</i>	<ul style="list-style-type: none"> <li>➤ Regular District Task Force meetings ongoing in all affected districts, National Task Force meets twice a week.</li> </ul>
<i>Surveillance &amp; Contact tracing</i>	<ul style="list-style-type: none"> <li>➤ Active contacts in the past 24-hours are 06 in Kassanda, who were all followed up.</li> <li>➤ Total alerts validated in past 24 hours were 56 from Mubende, Kassanda, Masaka and Jinja districts; 15 of these met the suspected case definition and 13 were evacuated.</li> <li>➤ In the past 24-hrs, a total of six alerts received from three CAT #2, #3 districts. All tested NEGATIVE for EVD (SUD)</li> </ul>
<i>Laboratory</i>	<ul style="list-style-type: none"> <li>➤ Total of 44 samples processed at UVRI and the mobile labs in Kampala and Mubende within the past 24 hours</li> <li>➤ Cumulative samples tested are 5,129 with 142 testing POSITIVE for EVD (SUD)</li> </ul>
<i>Case Management</i>	<ul style="list-style-type: none"> <li>➤ Zero confirmed cases on admission currently, routine patient care services ongoing.</li> <li>➤ Beds occupied in suspected wards are 05/30 in Mubende new ETU and 03/08 in Madudu in the past 24-hrs.</li> <li>➤ Three patients discharged from the new ETU and two from Madudu, in the past 24-hrs.</li> <li>➤ Within the past 24 hours, teams undertook a total of 24 evacuations (Mubende - 17, Kassanda - 06, Masaka - 01).</li> </ul>
<i>Emergency Medical Services</i>	<ul style="list-style-type: none"> <li>➤ One client in Mubende declined evacuation.</li> <li>➤ Cumulative EVD evacuations in Mubende, Kassanda, KMA, Masaka and Jinja stand at 1,672; cumulative non-EVD evacuations in Mubende and Kassanda = 1,537.</li> </ul>
<i>Safe &amp; Dignified Burials</i>	<ul style="list-style-type: none"> <li>➤ Within the past 24-hours, total of 12 death alerts verified from Mubende and Kassanda.</li> <li>➤ Conducted six safe and dignified burial in Mubende, Kassanda within the past 24 hours and collected 12 samples.</li> <li>➤ Six backlog cases in past 24-hours - five alerts were received past working hours, one pending alert in Kassanda has to be transported outside the district.</li> <li>➤ Cumulative SDBs conducted in Mubende: 399, Kassanda: 316 and eight in Jinja</li> <li>➤ Pillar conducting trainings for 2 teams in Masaka and Jinja.</li> </ul>

**Response Pillar****Key Updates in the past 24 hours***Infection Prevention and Control (IPC)*

- ➔ Team Mubende conducted IPC drills to 27 mentors on conducting an IPC assessment for IPC SOPs and transmission based precautions during EVD preparedness in paediatrics Maternity, Medical and Surgical Wards.

*Risk Communication & Public Awareness*

- ➔ Team Jinja conducted a baseline IPC facility assessment for 9 non-ring facilities.
- ➔ At least 149 radio spot-messages continue to be aired daily through 11 radio stations in Kyegegwa 8, Kagadi 6, Kassanda 10, Kakumiro 10, Bunyangabu 8 and Mubende 39, Masaka 13, Sembabule 13, Kazo 20, Kabarole 22).
- ➔ Disseminated 270 fact sheets, 400 brochures 188 posters 20 medical masks in Kagadi, Kassanda and Kyotera Districts.
- ➔ Jinja RCCE team distributed 100 EVD Posters, Job aids and 01 banner to hotel/lodges, restaurant and drug shop, pharmacy, Private clinics attendants.

*Social Mobilisation*

- ➔ Team Kyotera engaged 3 male church leaders with EVD messages
- ➔ Team Kagadi engaged 11 (7M, 4F) church leaders their responsibility in the fight against and EVD.
- ➔ Jinja RCCE team conducted health education sessions at St Fatima Catholic Church and reached 50 (19 Male & 29 female) with SBCC messages.

*Stakeholder Engagement*

- ➔ Team Kagadi reached 1,006 (Male 372 Female 470 & children -64) through outreaches in churches within Muhorro and Nyanseke Town Councils
- ➔ Team Kyotera reached 221 believers (110 males and 111 females) with educational messages on EVD Signs and symptoms, prevention, transmission and how to report suspected cases of Ebola
- ➔ Reached 5,160 (2,629 Male & 2,531Female) using the door-to-door approach in selected sub-counties in the districts of Kagadi, Masaka, Bunyangabu, Kyegegwa, Kassanda and Mubende

**Stock Status**

- ➔ Sufficient PHE commodities for PPE and supportive medicines reported in all the EVD response districts.
- ➔ Mubende reported a stockout of liquid soap, Jik, hand sanitizer and detergent soap

**Orders and Deliveries***Logistics*

- ➔ Bi-weekly consignment (IPC/WASH and PPE) from NMS delivered to both Kassanda and Mubende stores to support the EVD district activities.
- ➔ Distribution of one-month supplies to all the affected districts ongoing
- ➔ Mass Mosquito net and malaria drug distribution ongoing in the most affected sub-counties of Kassanda and Mubende districts

**Food, Fleet Management, and Infrastructure**

- ➔ Continued provision of meals to all ETUs.
- ➔ General construction works at the Kassanda ETU completed and awaiting official opening.
- ➔ Fleet provided to support response activities in all affected districts

*Mental Health & Psychosocial Social Support*

- ➔ **ETU SUPPORT:** Psychosocial support offered to eight clients at Madudu and new ETU; Mubende team continues to support two health workers in quarantine. All families updated on the status of their loved-ones currently admitted.
- ➔ **RESETTLEMENT:** Four clients from new ETU escorted back home; three clients from Madudu reunited with families; Communities engaged where discharged clients were resettled.
- ➔ **SURVIVOR FOLLOW-UP:** Fifteen survivors visited; one community dialogue conducted in Kikandwa where survivors care was discussed including adherence to condom use and partner support

**Key messages to the public**

- ➔ People in the community should call an alert hotline or go to a health facility if they have symptoms (e.g., fever, headache, weakness, vomiting, bloody diarrhoea or urine, bleeding from body openings).
- ➔ Hotline numbers are: **0800200043** for Mubende and Kassanda; **0800299000** for Kampala Metropolitan Area, **0800300043** for Masaka, **0800355411** for Kagadi all toll-free, **0800300046** for Jinja, and **0787437139** for Bunyangabu (not toll-free).
- ➔ Free alert SMS on **6767** starting with the 'ALERT' key word; Free alert SMS to U-report on 8500
- ➔ Community should not fear people who have been discharged from the ETU and returned home.