

EBOLA VIRUS DISEASE

Republic of Uganda



EBOLA VIRUS DISEASE

Situation Report 19

Data update as of 08th October 2022 at 22 :00 HRS

	Districts Affected	CASES	Deaths		Recoveries
		Confirmed	Confirmed	Probable	
New	00	00	00	-	00
Total	05	44	10	20	08

Key Highlights

On 20th September 2022, the Ministry of Health declared an outbreak of Sudan ebolavirus (EVD) after a case managed at Mubende Regional Referral Hospital (MRRH) in Mubende district was confirmed through testing at the Uganda Virus Research Institute (UVRI). This follows investigations by the National Rapid Response Team of suspicious deaths that had occurred in the district earlier in the month. This is the first time in more than a decade that Uganda reports an outbreak of Sudan ebolavirus.

- Zero new EVD confirmed cases and deaths in the past 24 hours.
- CFR among confirmed is 10/44 (23%). Data harmonisation process on-going
- Contacts follow-up rate in the past 24 hours was 94%.
- Ten healthcare workers infections reported, with four deaths.

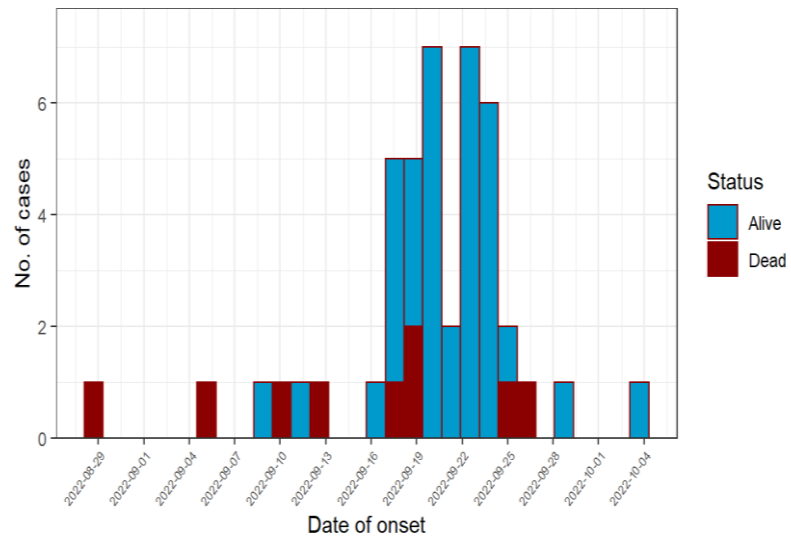
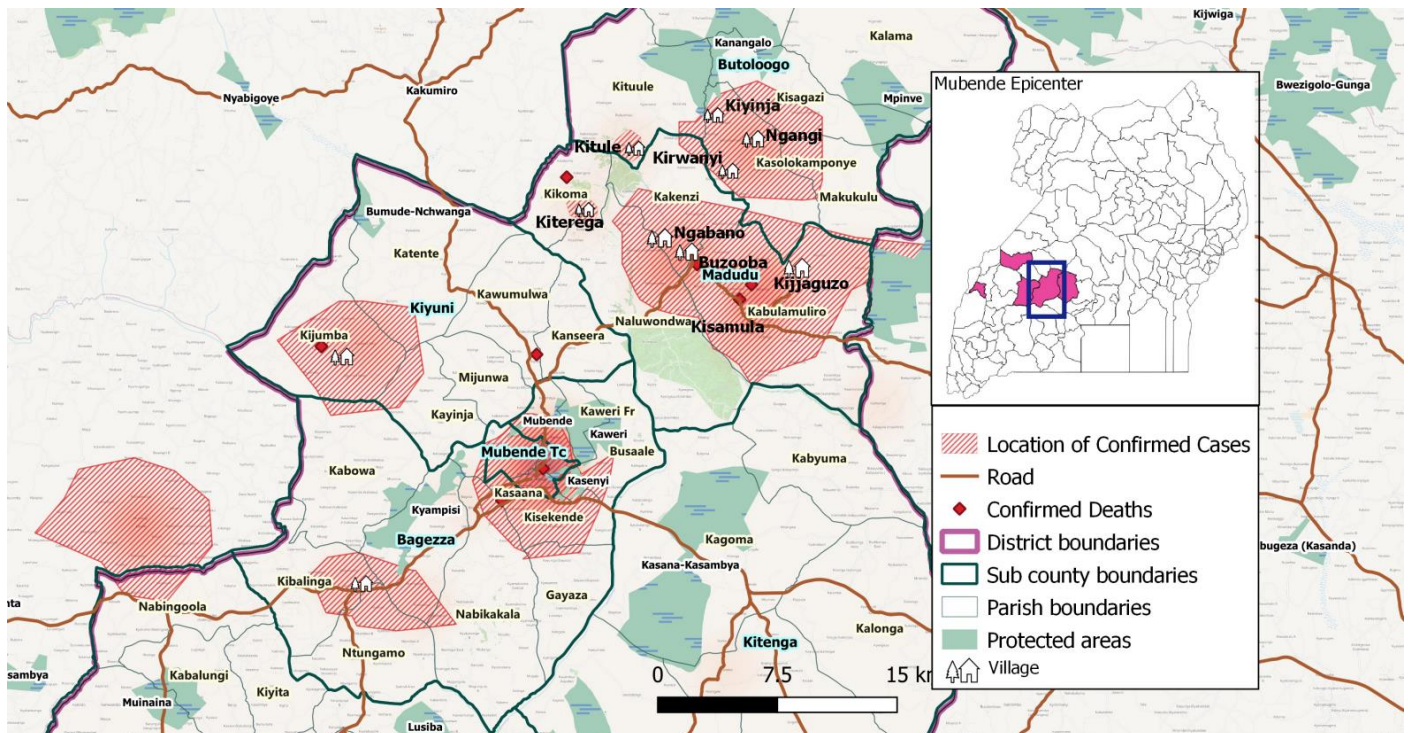


Figure 1: EpiCurve for Confirmed cases

Figure 2: Geographical distribution of confirmed cases in Mubende district



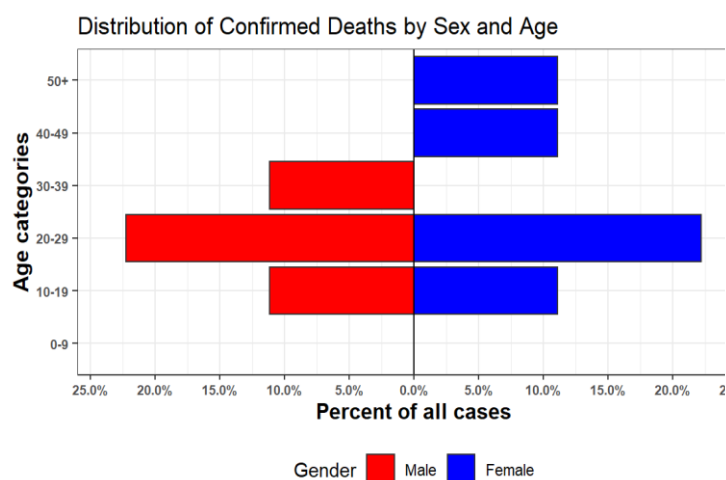
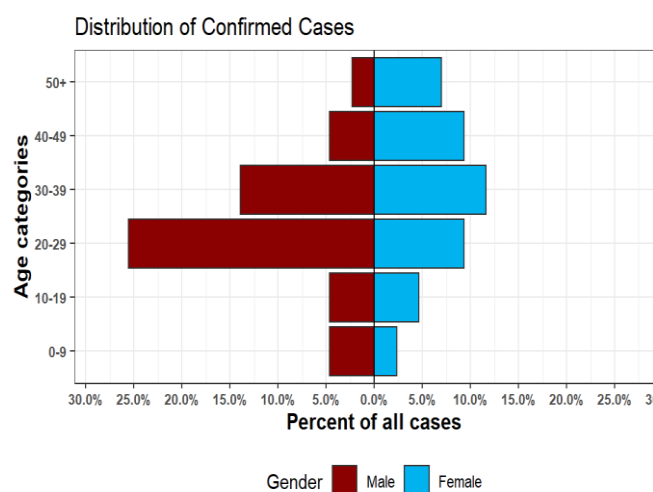
Summary of Cases and response updates as of 08th October 2022 at 22:00 HRS

As of 08-Oct-2022 at 22:00	Last 24 Hours						Cumulative					
	MUB	KYE	KAS	KAG	BUN	Total	MUB	KYE	KAS	KAG	BUN	Total
Confirmed Cases	00	00	00	00	00	00	36	03	03	01	01	44
Deaths												
Confirmed	00	00	00	00	00	00	09	00	00	01	00	10**1
Probable	-	-	-	-	-	-	19	00	01	00	00	20
Confirmed HCW												
Cases	00	00	00	00	00	00	08	00	00	01	01	10
Deaths	00	00	00	00	00	00	03	00	00	01	00	04
Admissions	07	NA	NA	NA	NA	07	135	NA	NA	NA	NA	135
Current Admissions												
Suspected	22	NA	NA	NA	NA	22	-	-	-	-	-	
Confirmed METU	08	NA	NA	NA	NA	08	-	-	-	-	-	
Confirmed FPRRH	05	NA	NA	NA	NA	05	-	-	-	-	-	
Recoveries	07	NA	NA	NA	NA	07	15	NA	NA	NA	NA	15
Runaways	00	NA	NA	NA	NA	00	18	NA	NA	NA	NA	18
Contacts listed	02	00	01	00	00	03	832	58	53	81**2	25	1,049
Contacts completed 21 days of follow-up	26	28	02	30	00	86	262	28	02	30	00	322
Contacts under active follow-up	543	20	42	49**2	25	679	-	-	-	-	-	-
Contacts followed-up today (% follow-up rate)	505 (93)	20 (100)	42 (100)	49 (100)	24 (96)	640 (94)	-	-	-	-	-	-
Number of Contacts developing symptoms	02	00	00	00	00	02	-	-	-	-	-	-
Number of Contacts evacuated	01	00	00	00	00	01	-	-	-	-	-	-
Signals / Calls received	18	00	01	01	03	23						
Alerts received	10	00	01	01	03	15						
Alerts verified (%)	10 (100)	00 (100)	01 (100)	01 (100)	03 (100)	15 (100)	-	-	-	-	-	-
Alerts meeting suspect case definition	07	00	00	00	00	07	-	-	-	-	-	-
Alerts evacuated	03	00	00	00	00	03	-	-	-	-	-	-
Samples collected	12	00	00	00	00	12	286	22	06	00	00	

Table Acronyms: MUB=Mubende, KYE=Kyegegwa, KAS=Kassanda, KAG=Kagadi, BUN=Bunyangabu, HCW=Healthcare Worker, METU=Mubende Ebola Treatment Unit, FPRRH=Fort Portal Regional Referral Hospital

**1 Data harmonisation on-going.

**2 Data combines KAGADI and KAKUMIRO districts



Actions to date

The Ministry of Health (MoH), Districts, and partners in Uganda are implementing several outbreak control interventions in Mubende and her surrounding districts to contain the disease spread. An overview of key activities is summarized below:

Response Pillar	Key Updates in the past 24 hours
Coordination	<ul style="list-style-type: none"> ➔ Daily DTF meetings held in all affected districts, chaired by the respective RDCs ➔ Daily pillar meetings in all affected districts and national level. ➔ Activated five village task forces in Madudu sub-county: Ngabano, Kijaguzo, Kisamula, Lulongo and Mbuya villages
Ecological Investigations	<ul style="list-style-type: none"> ➔ Ecological investigations continue in Bulega village of Madudu sub-county, based on information from communities regarding probable cases ➔ So far 52 bat samples have been collected and identified four bat species ➔ Concentration has been put on capturing bats in and around homesteads and will progressively head to forested areas and farmlands
Surveillance and Contact tracing	<ul style="list-style-type: none"> ➔ Active contacts are 679, contact tracing follow-up rate in past 24 hours was 94%. ➔ Total alerts verified in the past 24 hours were 15, all of which met suspect case definition.
Laboratory	<ul style="list-style-type: none"> ➔ Training of lab team at district level is ongoing ➔ Sample collection is being done in isolation unit ➔ Additional human resources seconded by UPDF (02), Mubende DLG (02) to support in sample collection at the isolation unit in addition to those from CPHL and Mildmay Ug ➔ Cumulative samples tested are 314.
Case Management	<ul style="list-style-type: none"> ➔ Seven recoveries registered in the past 24 hours ➔ Current admissions are 22 suspected, 08 confirmed cases in Mubende ETU and five healthcare workers who have been transferred from Fort Portal to Entebbe RR Hospital. ➔ Cumulative admissions are 135 with 15 cumulative recoveries
Emergency Medical Services	<ul style="list-style-type: none"> ➔ Responded to one request for inter-facility transfers and evacuated eight suspected cases from the communities of Mubende (07) and Kassanda (01) to the ETU. One declined evacuation.
Mental Health and Psychosocial Support	<ul style="list-style-type: none"> ➔ Resettled seven survivors to their homes, all were well received by their families and communities following engagement with community ➔ Resettled twenty suspects after NEGATIVE PCR results, four of whom were children between 2-15 years.
Infection Prevention and Control	<ul style="list-style-type: none"> ➔ Disinfected two households of two EVD survivors in Lusalira and Buzooba villages of Kitenga sub-county
WASH	<ul style="list-style-type: none"> ➔ Held meeting to discuss targeted community WASH approach with national level ➔ Construction of water system at the Madudu HC III isolation facility was completed, waiting for service ridge as part of construction process
Risk Communication	<ul style="list-style-type: none"> ➔ Ten Community audio towers in Madudu and Kiruma sub counties have aired out 40 messages on EVD. ➔ Five radio stations have conducted radio talkshows and played 15 spot messages on EVD plus DJ mentions.
Social Mobilisation and Community Engagement	<ul style="list-style-type: none"> ➔ Community dialogues conducted at 4 hotspot Villages in Kiyuni Sub-County where more than 211 people have attended. The villages: Kyabayanja, Kijumba, Kigamba and Kawawa. ➔ Three film vans conducted community sensitization and mobilization in areas of Kiyuni Sub County. Other film vans have mobilized in Kyegegwa and Kasanda districts ➔ VHTs at Kasanda Town Council oriented.
Logistics	<ul style="list-style-type: none"> ➔ Received admission and discharge packages, surgical gloves, buckets of Chlorine and tents from partners including UNICEF, WHO and RedCross. ➔ Ministry of Works and Transport started clearing of the yard offered for setting up of the ETU.

Critical Challenges listed

- Low stocks of response supplies including gumboots, phones for contact tracing, scrub-suits, JIK, stationery and thermometers
- Support to communications for responders (airtime and data)
- Delays in laboratory results upload
- Mobile laboratory in need of furnishing, access to auxiliary power source and internet connectivity

Key messages to the public

- People in the community should call an alert hotline or go to a health facility if they have symptoms (e.g., fever, headache, weakness, vomiting, bloody diarrhoea or urine, bleeding from body openings).
- Current hotline numbers are: **0800200043 (Toll-free)**, **0762640374**, **0762640379**, **0708062203**, **0702869375**, **0708052008**, **0762659215 (Not toll-free)**
- Free alert SMS on **6767** starting with the 'ALERT' key word
- Community should not fear people who have been discharged from the ETU and returned home.

