



# South Sudan Ministry of Health

Integrated Disease surveillance  
and response (IDSR)



World Health  
Organization  
South Sudan

## Epidemiological Bulletin Week 17, 2022 ( April 23- April 29 )

## Major epidemiological highlights in week 17 of 2022



- In week **17, 2022**, the IDSR reporting timeliness and completeness were **59%** and **81%** respectively while the timeliness and completeness from the EWARNS sites were **55%** and **93%** respectively
- Hepatitis E virus cases continue to be reported in Bentiu IDP Camp with, **2,478** cases and 22 deaths (CFR **0.8%**) reported since week 1, 2019
- Of the **98** alerts generated in week 17, 2022; malaria (25), AWD (28), ARI (9), measles (8) and ABD (10) accounted for the most alerts
- **17,472** confirmed COVID-19 cases and **138** (CFR **0.789%**) deaths reported in South Sudan since the beginning of the outbreak
- Confirmed cholera outbreak in Bentiu, Unity state with 31 cases and one death CFR 3.2%
- Confirmed meningitis outbreak in 5 counties in Northern Bah Elgazal state
- Confirmed anthrax outbreak in Gogrial West county with 8 PCR-confirmed cases out of 18 tested samples
- New confirmed measles outbreak in NBGZ state ( Aweil Center, Aweil West and Aweil East) after 15 out of 16 samples tested positive for measles IgM.

# SURVEILLANCE PERFORMANCE



For the Integrated Disease Surveillance (IDSR) network and Early warning alert and response network (EWARN)



## IDSR timeliness performance a state level for week 17 & 16 of 2022

| Timeliness States Ranking | States             | Number of reporting sites | No. of HFs Reported on Time in WK 17 | Timeliness Percentage of WK 17 | No. of HFs Reported on Time in WK 16 | Timeliness Percentage of WK 16 |
|---------------------------|--------------------|---------------------------|--------------------------------------|--------------------------------|--------------------------------------|--------------------------------|
| 1st                       | Lakes              | 113                       | 105                                  | 93%                            | 113                                  | 100%                           |
| 2nd                       | CES                | 110                       | 89                                   | 81%                            | 99                                   | 90%                            |
| 3rd                       | WES                | 218                       | 167                                  | 77%                            | 218                                  | 100%                           |
| 4th                       | Warrap             | 123                       | 85                                   | 69%                            | 99                                   | 80%                            |
| 5th                       | Unity              | 95                        | 60                                   | 63%                            | 70                                   | 74%                            |
| 6th                       | Jonglei            | 108                       | 50                                   | 46%                            | 71                                   | 66%                            |
| 7th                       | NBGZ               | 118                       | 51                                   | 43%                            | 69                                   | 58%                            |
| 8th                       | EES                | 142                       | 57                                   | 40%                            | 81                                   | 57%                            |
| 9th                       | Upper Nile         | 98                        | 33                                   | 34%                            | 74                                   | 76%                            |
| 10th                      | WBGZ               | 80                        | 8                                    | 10%                            | 65                                   | 81%                            |
|                           | <b>South Sudan</b> | <b>1205</b>               | <b>705</b>                           | <b>59%</b>                     | <b>959</b>                           | <b>80%</b>                     |

### KEY

|  |         |           |
|--|---------|-----------|
|  | <60%    | Poor      |
|  | 61%-79% | Fair      |
|  | 80%-99% | Good      |
|  | 100%    | Excellent |

The timeliness of IDSR reporting (supported by EWARS mobile) at health facility level was at **59%** in week 17, 2022 and **80%** in week 16, 2022. Reporting was above the 80% target in all states.

**Reporting challenges:** Insecurity, internet access and new partners



## IDSR completeness performance at state level for week 17 & 16 of 2022

| Completeness States Ranking | States             | Number of reporting sites | No. of HFs Reported regardless of time in WK 17 | Completeness Percentage of WK 17 | No. of HFs Reported regardless of time in WK 16 | Completeness Percentage of WK 16 |
|-----------------------------|--------------------|---------------------------|---|----------------------------------|---|----------------------------------|
| 1st                         | WES                | 218                       | 217   | 100%                             | 218   | 100%                             |
| 2nd                         | Lakes              | 113                       | 105   | 93%                              | 113   | 100%                             |
| 3rd                         | CES                | 110                       | 97  | 88%                              | 100   | 91%                              |
| 4th                         | WBGZ               | 80                        | 67  | 84%                              | 72  | 90%                              |
| 5th                         | Warrap             | 123                       | 100   | 81%                              | 103   | 84%                              |
| 6th                         | Jonglei            | 108                       | 84  | 78%                              | 90  | 83%                              |
| 7th                         | Upper Nile         | 98                        | 75  | 77%                              | 90  | 92%                              |
| 8th                         | Unity              | 95                        | 69  | 73%                              | 77  | 81%                              |
| 9th                         | NBGZ               | 118                       | 73  | 62%                              | 81  | 69%                              |
| 10th                        | EES                | 142                       | 85  | 60%                              | 97  | 68%                              |
|                             | <b>South Sudan</b> | <b>1205</b>               | <b>972</b>                                      | <b>81%</b>                       | <b>1041</b>                                     | <b>86%</b>                       |

### KEY

|  |         |           |
|--|---------|-----------|
|  | <60%    | Poor      |
|  | 61%-79% | Fair      |
|  | 80%-99% | Good      |
|  | 100%    | Excellent |

The completeness of IDSR reporting (supported by EWARS mobile) at health facility level was **81%** in week 17, 2022 and **86%** in week 16, 2022. Reporting was above the 80% target in all the states





## Surveillance: EWARS timeliness performance indicator by partner for week 17 and 16 of 2022

| Partner        | HFs                       | Reporting                                | Performance           |  |                       |
|----------------|---------------------------|--|-----------------------|--|-----------------------|
| PARTER         | Number of reporting sites | # of reports received on Time in Week 17 | Timeliness of Week 17 | # of reports received on Time in Week 16 | Timeliness of Week 16 |
| UNH            | 2                         | 2  | 100%                  | 2  | 100%                  |
| ADA            | 1                         | 1  | 100%                  | 1  | 100%                  |
| IRC            | 2                         | 2  | 100%                  | 2  | 100%                  |
| SMC            | 6                         | 6  | 100%                  | 6  | 100%                  |
| UNIDOR         | 2                         | 2  | 100%                  | 2  | 100%                  |
| MC             | 2                         | 2  | 100%                  | 2  | 100%                  |
| Medair         | 2                         | 2  | 100%                  | 2  | 100%                  |
| IOM            | 10                        | 10                                       | 100%                  | 10                                       | 100%                  |
| TRI-SS         | 2                         | 2  | 100%                  | 2  | 100%                  |
| HAA            | 4                         | 4  | 100%                  | 3  | 75%                   |
| HFO            | 2                         | 2  | 100%                  | 1  | 50%                   |
| MSF-E          | 6                         | 4  | 67%                   | 4  | 67%                   |
| Medicair       | 4                         | 2  | 50%                   | 4  | 100%                  |
| MSF-H          | 4                         | 2  | 50%                   | 2  | 50%                   |
| IMC            | 24                        | 2  | 8%                    | 23                                       | 96%                   |
| CIDO           | 1                         | 0  | 0%                    | 1  | 100%                  |
| World Relief   | 2                         | 0  | 0%                    | 2  | 100%                  |
| Islamic Relief | 5                         | 0  | 0%                    | 5  | 100%                  |
| SSHCO          | 1                         | 0  | 0%                    | 0  | 0%                    |
| <b>TOTAL</b>   | <b>82</b>                 | <b>45</b>                                | <b>55%</b>            | <b>74</b>                                | <b>90%</b>            |

**Timeliness for EWARS partner-supported sites were at 55% in both week 17, 2022 and 90% in week 16, 2022**



## Surveillance: EWARS timeliness performance indicator by partner for week 17 and 16 of 2022

| Partner        | HFs                       | Reporting   | Performance             |   |                         |
|----------------|---------------------------|---|-------------------------|---|-------------------------|
| PARTER         | Number of reporting sites | # of reports received regardless of Time in Week 17 | Completeness of Week 17 | # of reports received regardless of Time in Week 16 | Completeness of Week 16 |
| UNH            | 2                         | 2   | 100%                    | 2   | 100%                    |
| CIDO           | 1                         | 1   | 100%                    | 1   | 100%                    |
| ADA            | 1                         | 1   | 100%                    | 1   | 100%                    |
| Medicair       | 4                         | 4   | 100%                    | 4   | 100%                    |
| IRC            | 2                         | 2   | 100%                    | 2   | 100%                    |
| SMC            | 6                         | 6   | 100%                    | 6   | 100%                    |
| UNIDOR         | 2                         | 2   | 100%                    | 2   | 100%                    |
| MC             | 2                         | 2   | 100%                    | 2   | 100%                    |
| World Relief   | 2                         | 2   | 100%                    | 2   | 100%                    |
| Medair         | 2                         | 2   | 100%                    | 2   | 100%                    |
| IOM            | 10                        | 10  | 100%                    | 10  | 100%                    |
| TRI-SS         | 2                         | 2   | 100%                    | 2   | 100%                    |
| IMC            | 24                        | 24  | 100%                    | 23  | 96%                     |
| HAA            | 4                         | 4   | 100%                    | 3   | 75%                     |
| HFO            | 2                         | 2   | 100%                    | 1   | 50%                     |
| MSF-H          | 4                         | 3   | 75%                     | 2   | 50%                     |
| MSF-E          | 6                         | 4   | 67%                     | 6   | 100%                    |
| Islamic Relief | 5                         | 3   | 60%                     | 5   | 100%                    |
| SSHCO          | 1                         | 0   | 0%                      | 0   | 0%                      |
| <b>TOTAL</b>   | <b>82</b>                 | <b>76</b>   | <b>93%</b>              | <b>76</b>   | <b>93%</b>              |

**Completeness for EWARS partner-supported sites was at 93% in week 17, 2022 and 94% in week 16, 2022**



# EVENT-BASED SURVEILLANCE

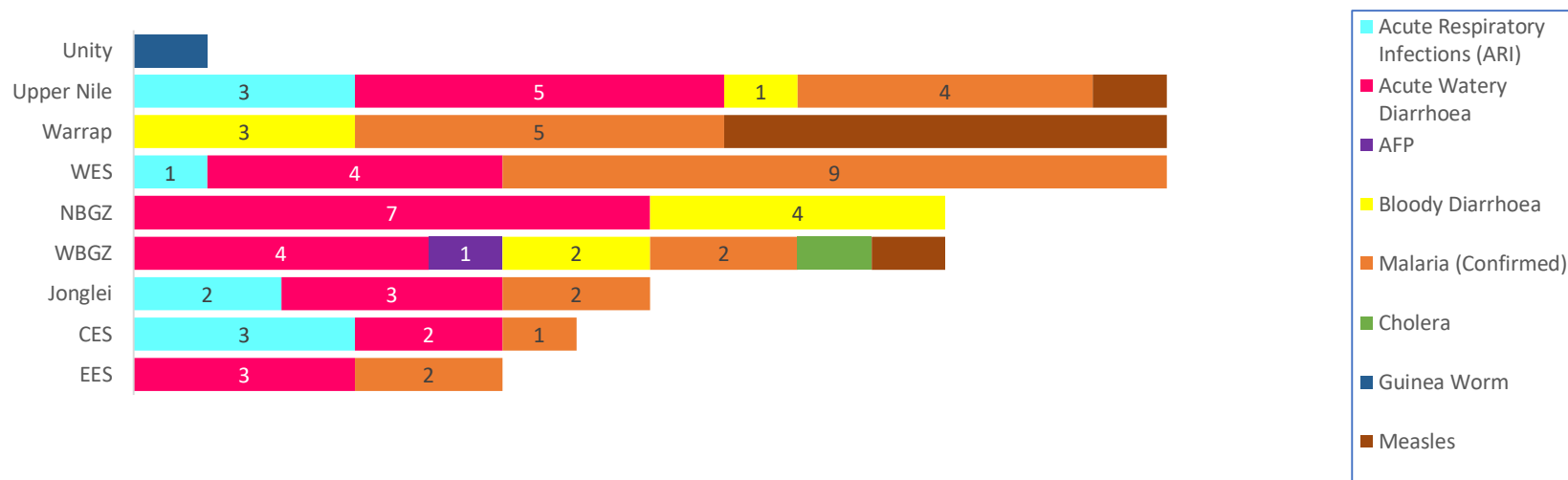


Alert management including detection; reporting; verification; risk assessment; & risk characterization



## Alert by disease and hub in week 17 of 2022

Alert by disease and States in week 17 of 2022 [ a total of events specific alerts generated by state



### This week a total of 98 Alerts were triggered from the EWARS System:

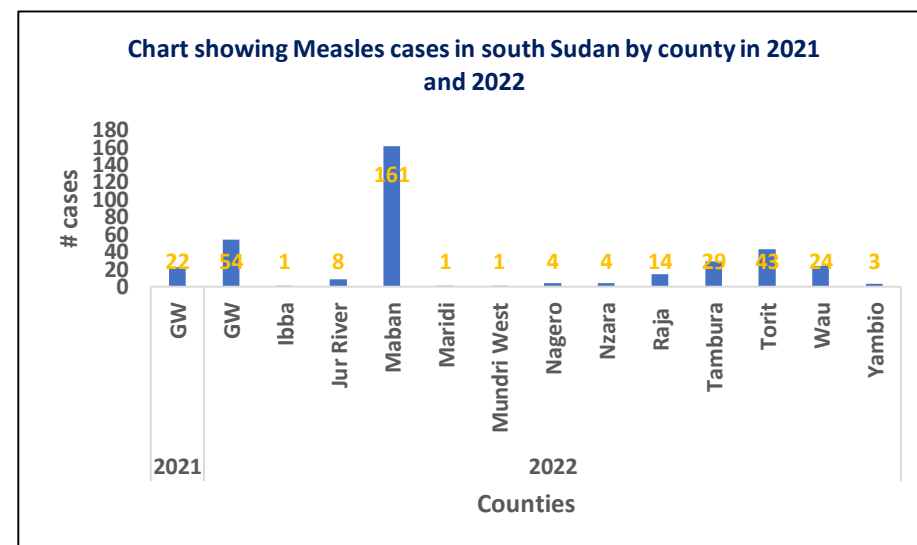
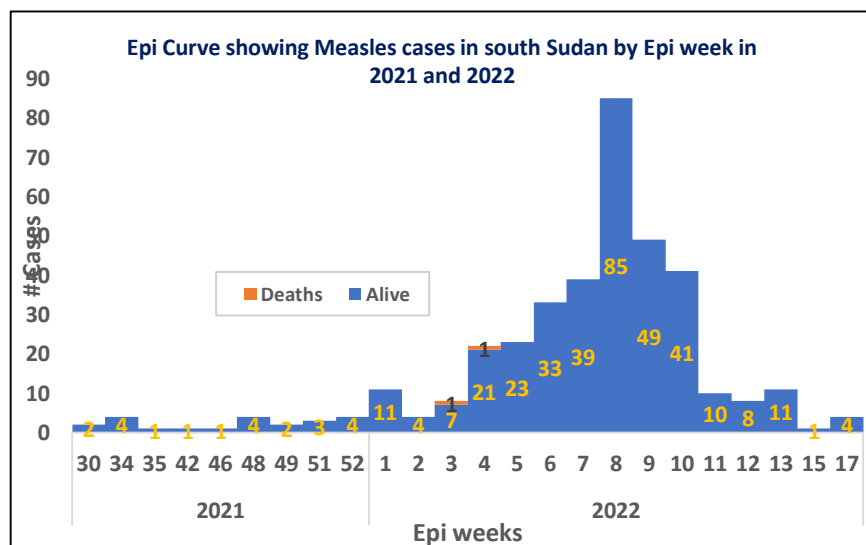
- ❖ **8 Measles alerts:** these alerts were triggered from Warrap State, Gogrial West county in Kuajok Hospital and Wanhalel PHCU in Tonj South, Doro IMC PHCC in Maban County, Magai PHCU(4) in Gogriel West, Awany PHCU in Jur River County
- ❖ **1 Cholera alert:** this alert was from Kuru PHCU in Raja County of WBGZ
- ❖ **1 Guinea Worm alert:** this alert was triggered from Kueryiek PHCU in Manyo County of Unity State
- ❖ **1 AFP alert:** from Barurud PHCU in Jur River County of WBGZ

# **ACTIVE OUTBREAKS AND PUBLIC HEALTH EVENTS**

Brief epidemiological description and public health response for active outbreaks and public health events`

# Measles Situation Update in South Sudan May, 2022

| S/N | County                    | Cases (n) | Deaths (CFR%) | Administrative coverage %     | PCE results | Comments                  |
|-----|---------------------------|-----------|---------------|-------------------------------|-------------|---------------------------|
| 1   | Torit                     | 43        | 2 (4.7%)      | Completed                     |             | Coverage yet to be shared |
| 2   | Maban County/Doro Refugee | 161       | 0 (0%)        | 98% ( Refugee)<br>89% ( Host) |             |                           |
| 3   | Tambura                   | 29        | 0 (0%)        | 102%                          |             |                           |
| 4   | Raja                      | 21        | 0 (0%)        | ongoing                       |             |                           |
| 5   | Gogrial West              | 54        | 0 (0%)        | Planned                       |             |                           |
| 6   | Aweil Center              | 13        | 0 (0%)        |                               |             |                           |
| 7   | Aweil East                | 8         | 0 (0%)        |                               |             |                           |
| 8   | Aweil West                | 25        | 0 (0%)        |                               |             |                           |



# Response| Summary of major ongoing outbreaks in 2022



| Aetiological agent       | Location (county) | Date first reported | New cases since last bulletin | Cumulative cases to date (attack rate %) | Interventions   |             |                  |      |
|--------------------------|-------------------|---------------------|-------------------------------|--|-----------------|-------------|------------------|------|
|                          |                   |                     |                               |  | Case management | Vaccination | Health promotion | WASH |
| <b>Ongoing epidemics</b> |                   |                     |                               |  |                 |             |                  |      |
| Hepatitis E              | Bentiu PoC        | 03/01/2019          | 70                            | 2,237(0.0024)                            | Yes             | No          | Yes              | Yes  |
| COVID-19                 | 35 counties       | 05/4/2020           | 49                            | 17,064 (0.0028)                          | yes             | yes         | yes              | yes  |
| Measles                  | Torit             | 8/2/2022            | 43                            | 1 (0.023)                                | Yes             | Yes         | Yes              | Yes  |
| Measles/ Rubella         | Maban-Doro Camp   | 5/01/2022           | 161                           | 20 (0.124)                               | Yes             | Yes         | Yes              | Yes  |
| Measles/ Rubella         | Tambura           | 20/02/2022          | 2                             | 5 ( 0.4)                                 | Yes             | Yes         | Yes              | Yes  |
| Rubella                  | Gogrial West      |                     | 1                             | 76(0.13)                                 | Yes             | No          | Yes              | Yes  |
| Cholera                  | Bentiu            | 20/3/2022           | 1                             | 31(0.032)                                | yes             | yes         | yes              | yes  |

# Confirmed Measles/ Rubella Outbreak in Tambura County, WES

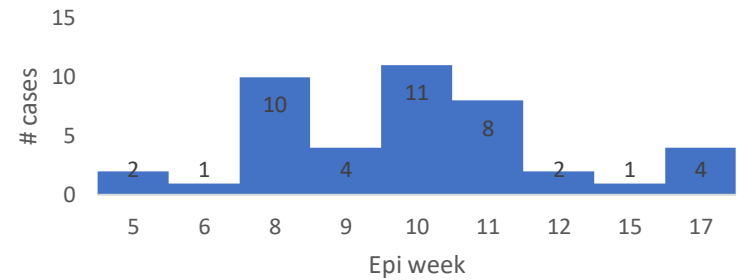
## Descriptive epidemiology

- The county started reporting suspected measles cases in week 8, 2022
- A total of **43** cases have been listed and **4** new cases reported in week 17, 2022
- Majority (63%) of the cases are male; and 37% of the cases are <5years
- Most affected area is Tambura and Nzara villages
- Out of the **9** samples tested in the NPHL, **3** tested measles IgM positive and **6** tested rubella IgM positive.

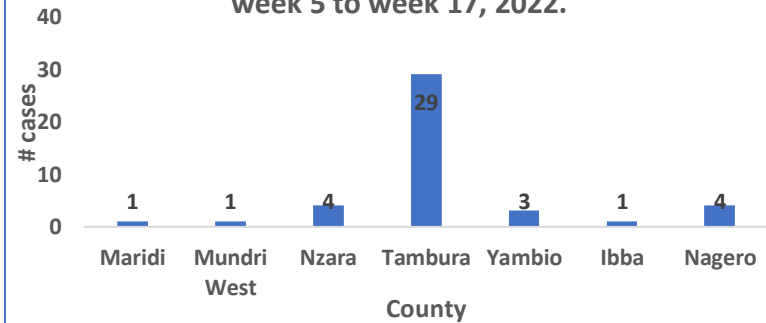
## Response Actions

- Micro plan developed and reactive campaign was conducted by SMOH, IOM and MSF in four IDP sites where 12,969 children were vaccinated aged 6 -59 months with a coverage of 102%.
- NMoH and WHO are planning to conduct PCE next week on 13<sup>th</sup> May 2022.

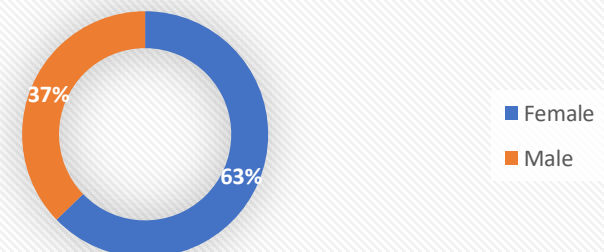
Epi curve Suspected Measles cases in WES week 5 to week 17, 2022.



Suspected Measles cases in WES by county week 5 to week 17, 2022.



Suspected Measles cases in WES by gender week 5 to week 17, 2022

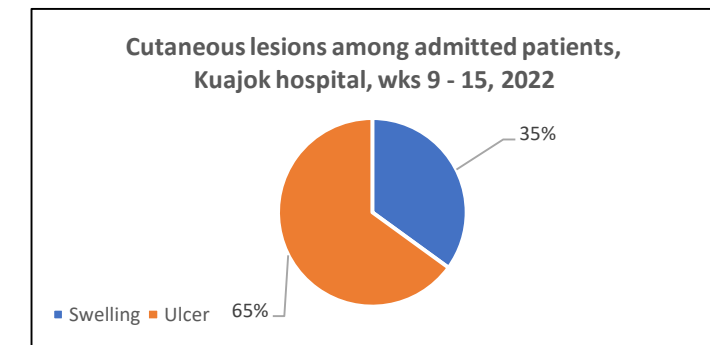
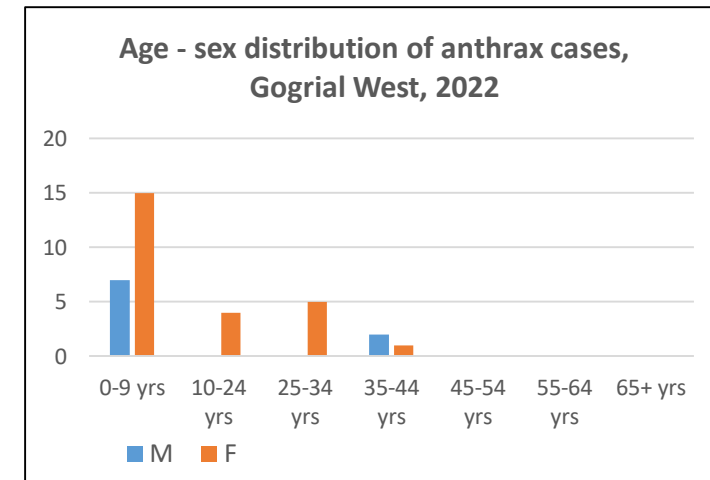
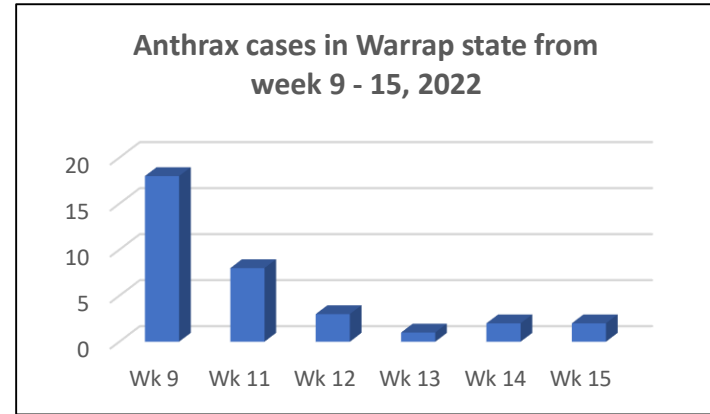




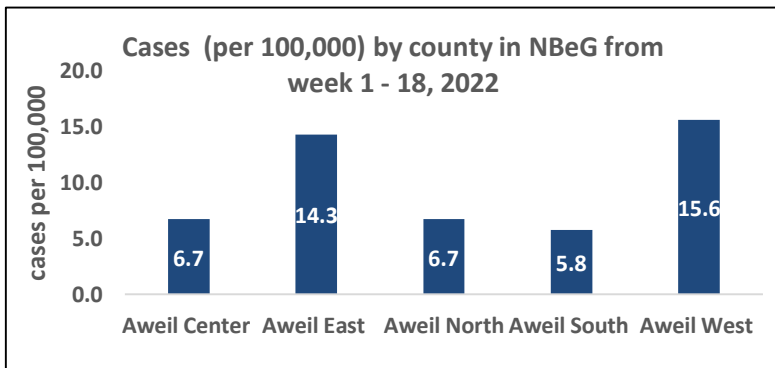
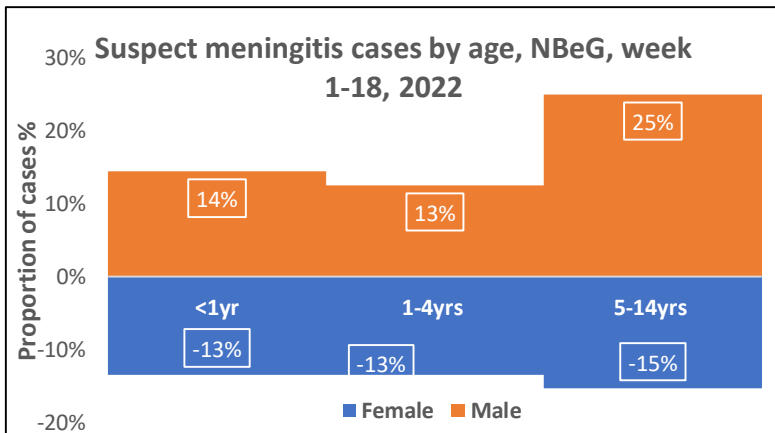
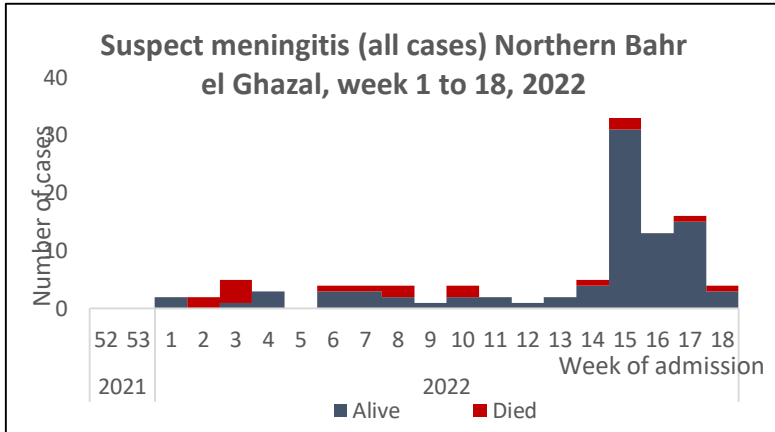
- Suspected anthrax cases were detected at the Kuajok hospital, and a retrospective review of the facility registers revealed over cases in the past two months.
- The state Rapid Response Team (RRT) initiated investigations using anthrax ulcer case definition of any person presenting with a painless skin lesion with an ulcer or swelling and discharge on any part of the body with a duration of 5 days associated with mild fever.
- 34 cases have been line listed. All cases are from one County of Gogrial West. >70% of the cases are from Kuac North Payam. 73.5% of the cases are among females.
- A total of eighteen (18) suspected cases were line-listed and 9 swabs were collected for laboratory investigation and analysis. **Out of the 18 samples , 8 tested positive by PCR.**

## Ongoing response

- Engagement with line Ministry of livestock and partners at National and State levels.
- Meeting convened between the Ministry of Health and Ministry of Livestock and Fisheries at state level to initiate joint investigations and response
- Active case search and line listing of cases in the affected county and the surrounding.
- Case management at Kuajok hospital.



# Confirmed Meningitis in Northern Bahr el Ghazal State



- **176 suspect cases**, with 16 deaths (CFR 9%) reported from 5 counties in NBeG from week 1-18, 2022. **Spike** in suspect cases reported in week 15, 2022
- Most cases reported among 15+ yrs (38%) and <1yr (29%)
- **Most deaths (CFR 22%)** have occurred in infants (<1yr) with risk of death decreasing with increasing age. High overall CFR of 9% but below the threshold of <10%
- **Aweil West & Aweil East** reported the highest cumulative attack rates and surpassed the alert threshold
- **Aweil West county surpassed the action threshold in week 9, 2022** 8 samples shipped on **17 Apr 2022** for testing. *Streptococcus pneumoniae* isolated in one of the samples (other samples contaminated or no growth). **7 samples shipped to NICD for further testing (3 tested positive for N.meningitidis by PCR; by genogrouping 2 out of 3 were group X)**. Additional samples to be shipped to Juba
- Last **MenAfriVac** vaccination in March **2016** attained **adm. coverage of 92.3%**. South Sudan has not introduced the pneumococcal vaccine (PCV) into routine immunisation

## Response Activities Underway:

- MoH and partners held coordination meetings in the PHEOC on 18th; 19th; & 25th April 2022
- Case identification, investigation and management underway in Aweil Civil hospital by MSF France
- Samples being shipped to NPHL Juba and NICD for culture and PCR testing
- High level advocacy Ministerial visit to Aweil successfully conducted on 28 April 2022
- National RRT deployed to Aweil on 28 April 2022 and are currently supporting active case search and retrospective line listing of suspect cases that were missed in the counties
- Secured 3,000 vials of ceftriaxone from ICG and shipment is underway to South Sudan



# Confirmed Cholera Outbreak in Bentiu, Unity State (1)

## Descriptive epidemiology

- V. cholerae case confirmed on 14 Apr 2022 in Bentiu
- Following RRT deployment to Bentiu from 22-29 April 2022, 7 additional cholera cases were confirmed by culture
- Cumulatively 31 suspected cases have been reported (12 cholera RDT positive and culture confirmed)
- One RDT positive case (CFR 3.2%) died on 26 April 2021
- All the cases treated and discharged; no case in admission in Bentiu IDP camp treatment center
- Active case search is ongoing in the Bentiu IDP camp and Rubkona Town involving Community Health workers. A retrospective review of the health facility records by the National Rapid Response Team in 5 health facilities in Bentiu IDP Camp showed increased in AWD cases (>3000 cases) from January – April 2022.

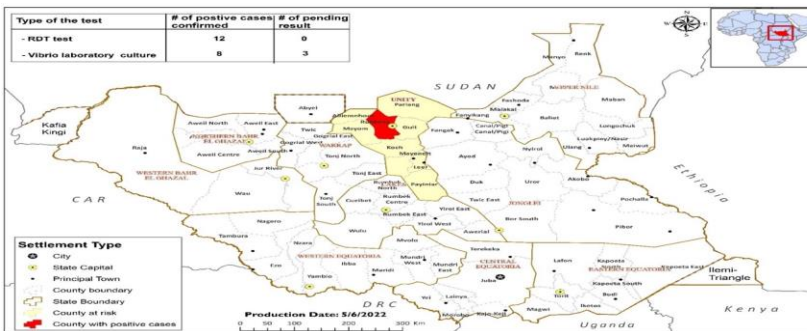


Figure 2: Epicurve of Positive cholera cases in South Sudan, 20 March to 29 April

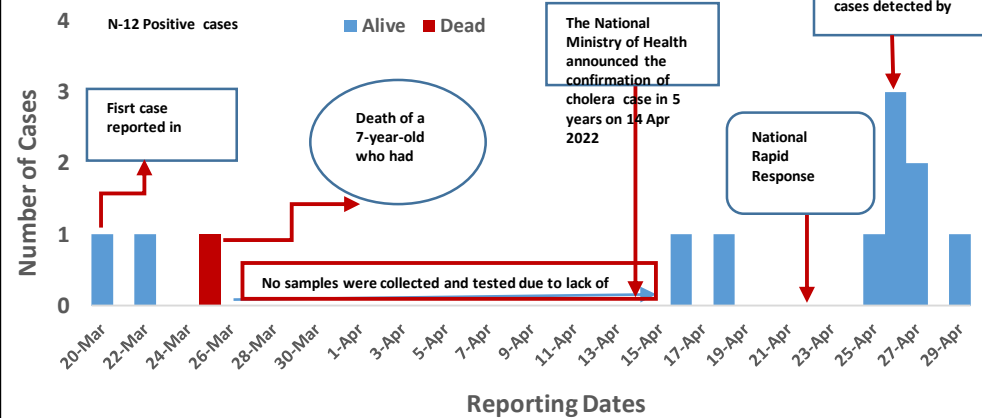
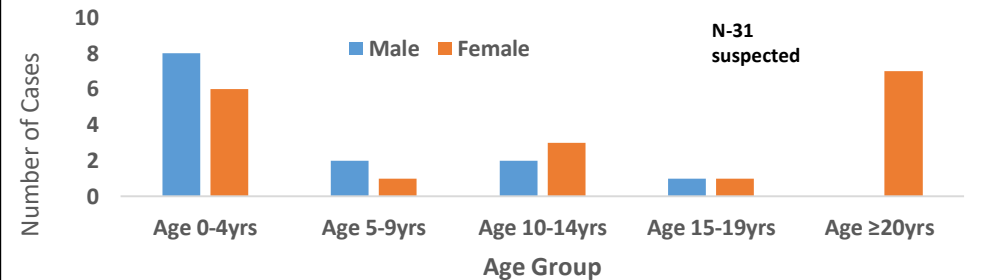
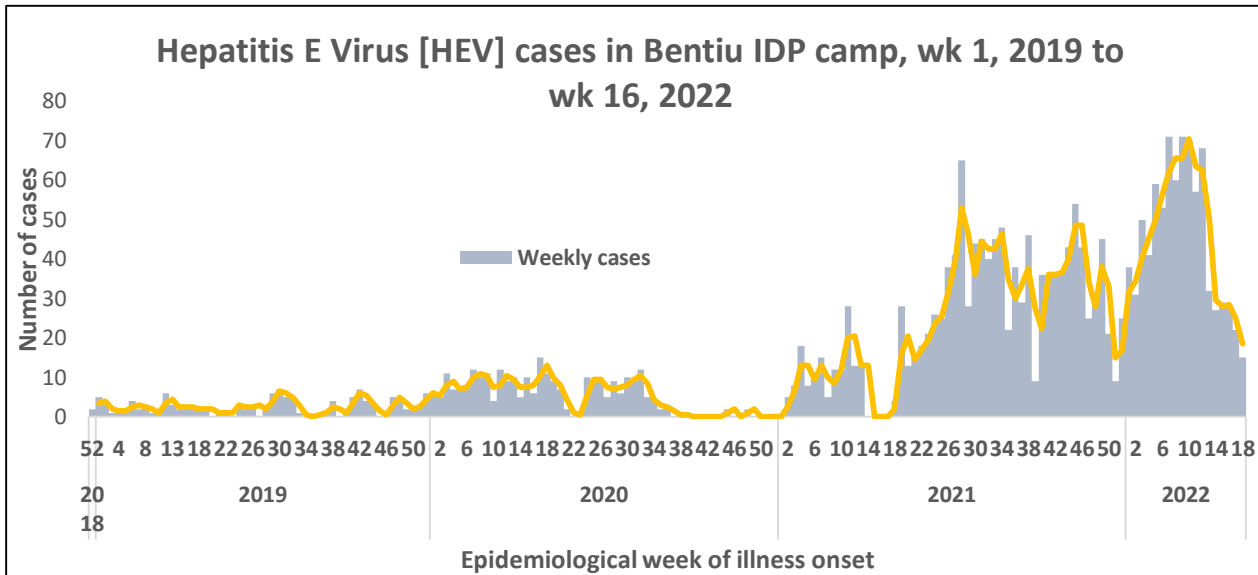


Figure 3: Distribution of reported suspected cases by sex and age, Rubkona



- PHEOC activated to coordinate response
- National cholera contingency plan to guide response underway
- Developed and disseminated the outbreak case definition and surveillance tools to 20 HF
- Surveillance heightened and suspected cholera cases are being investigated at the sub national level by surveillance officers
- [https://moh.gov.ss/press\\_release.php](https://moh.gov.ss/press_release.php)





### HEV response update

1. Following the completion of the multi-cluster HEV response strategy, resources have been secured to optimize the response and interrupt transmission.
2. Increased the amount of water per person to 16 liters as part of Hepatitis E virus response
3. IOM has constructed 28 latrines in sectors 2&3
4. IOM deployed 5 operational dislodging tanks for human excreta disposal and dislodging disposition is ongoing in all sectors.
5. IOM has deployed casual workers to collect the solid waste
6. IOM hygiene promoters conducting house-to-house & schools messaging on HEV control
7. IRC recruited 33 home health promoters in sector 4 and 5; while WR recruited and deployed 15 HHs at sector 1 & 2.
8. IOM conducted targeted NFI distribution to Lactating and pregnant
9. IOM-CCCM deployed teams to clean up the drainage around the camp to flash out stagnant water and about 18 kilometer of drainage has been cleared and dried up.
10. WHO trained 90 HCWs to enhance HEV detection and investigation while 90 frontline HCWs were trained on case management
11. MSF conducting case verification and active case search in the community
12. Weekly HEV Taskforce coordination meeting ongoing to provide leadership to and oversee the response
13. **The HEV vaccination campaign was conducted in March 2022; first round coverage was 91% and second round was 82% in Bentiu IDP camp were vaccinated aged 16-40 years (incl. pregnant women)**

### HEV response challenges

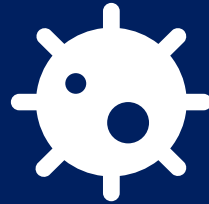
1. WR and IRC lack HEV testing kits to diagnose the disease
2. Lack of long-term investment to improve WASH situation in the camp

# Response | Summary of major controlled outbreaks in 2020 and 2021



| Aetiological agent          | Location (county) | Date first reported      | New cases since last bulletin | Cumulative cases to date (attack rate %) | Interventions   |             |                  |      |
|-----------------------------|-------------------|--------------------------|-------------------------------|--|-----------------|-------------|------------------|------|
|                             |                   |                          |                               |  | Case management | Vaccination | Health promotion | WASH |
| <b>Controlled epidemics</b> |                   |                          |                               |  |                 |             |                  |      |
| Measles                     | Pibor             | 27/1/2020                | NR                            | 355 (0.0028)                             | Yes             | Yes         | Yes              | Yes  |
| Measles                     | Wau               | 5/1/2020                 | NR                            | 39 (0.051)                               | Yes             | Yes         | Yes              | Yes  |
| Measles                     | Ibba              | 25/1/2020                | 0                             | 55 (0.36)                                | Yes             | Yes         | Yes              | Yes  |
| Rubella                     | Tambura           | 11/1/2021                | 0                             | 23 (0.13)                                | Yes             | No          | Yes              | Yes  |
| Rubella                     | Nagero            | 01/03/ 20201             | 0                             | 5 (0.25)                                 | Yes             | No          | Yes              | Yes  |
| cVDPV2                      | 25 counties       | 11/06/2020<br>18/09/2020 | NA                            | 59                                       | Yes             | Yes         | Yes              | Yes  |

# COVID-19 UPDATES

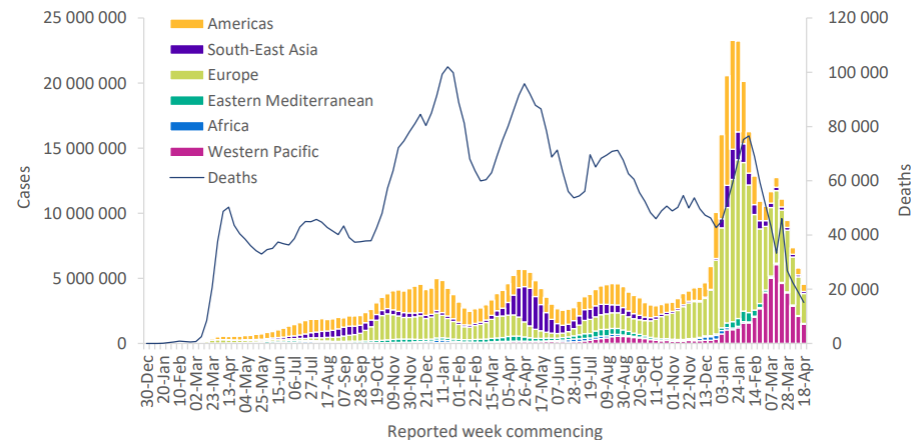




## Situation update as of 24<sup>th</sup> April 2022

- **Globally, 24<sup>th</sup> April 2022**, there have been **507 184 387 confirmed cases** of COVID-19, including **6 219 657 deaths**, reported to WHO. As of **27<sup>th</sup> April 2021**, a total of **11,438,720,838 vaccine doses** have been administered.
- **In Africa, as of 24<sup>th</sup> April**, there have been **8 721 105 confirmed cases** of COVID-19, including **171 564 deaths** reported to WHO

Figure 1. COVID-19 cases reported weekly by WHO Region, and global deaths, as of 24 April 2022\*\*



WHO: <https://www.who.int/health-topics/coronavirus>



- **17,472** confirmed cases with **138** deaths and 3,820 active cases - **0.78%** case fatality rate (CFR)
- **11** new confirmed cases during the week.
- The Omicron [B.1.1.529]) predominates the last batch of samples sequenced at Uganda Virus Research Institute ; 79.6% of cases detected in Juba compared to 20.4% outside of Juba
- **2,121,370** vaccine doses received to-date. **717,964** vaccine doses administered to date. **625,723** fully vaccinated ( 3,736 with two AZ vaccine doses, 578,691 with single dose J&J vaccine). Ongoing vaccination roll-out in 10 state, 3 administrative areas, 80 counties and 694 health facilities.



## Epi Curve

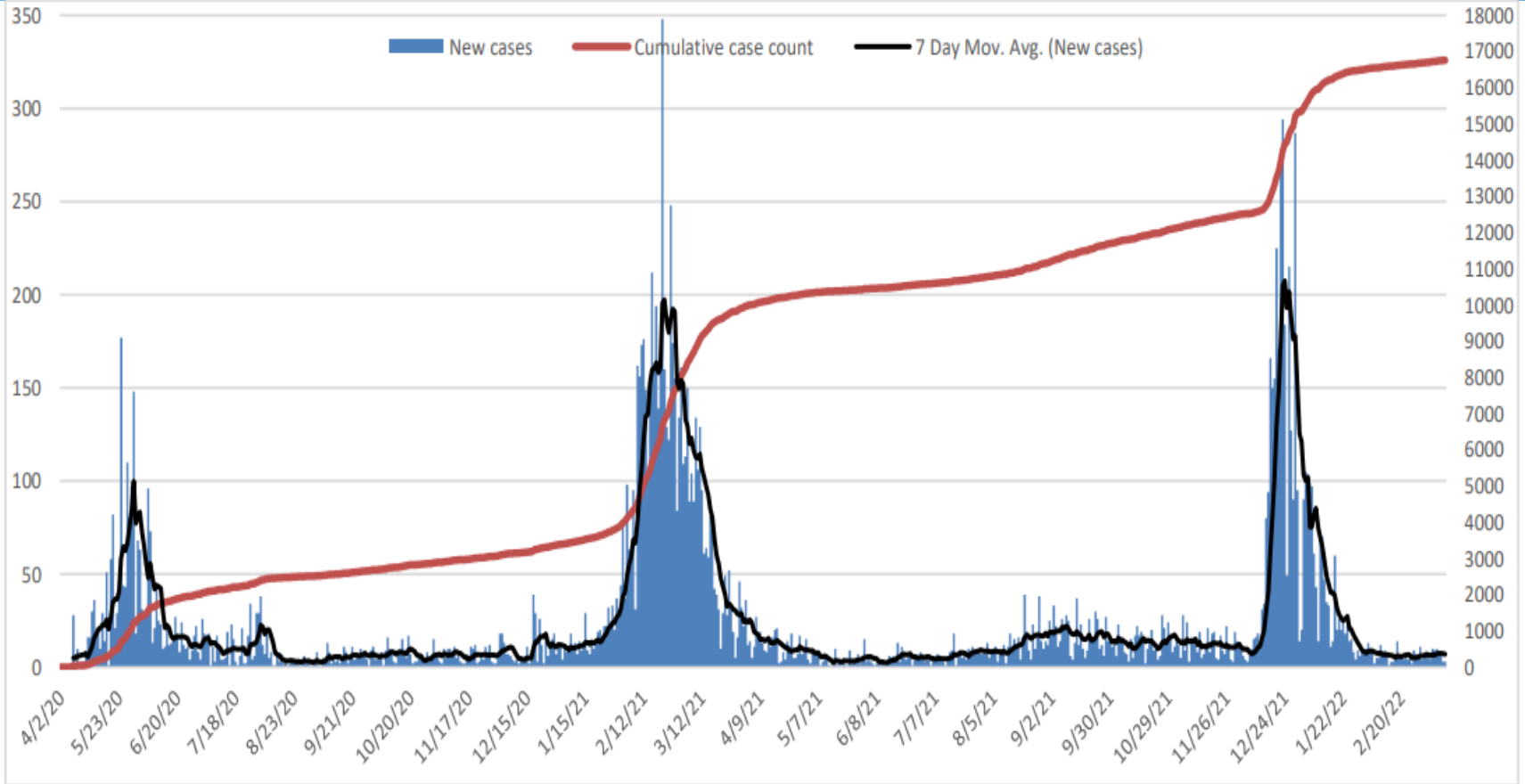


Figure 2. Epidemiological curve of reported cases through Week 10





**OVERALL  
CONCLUSIONS AND  
RECOMMENDATIONS**

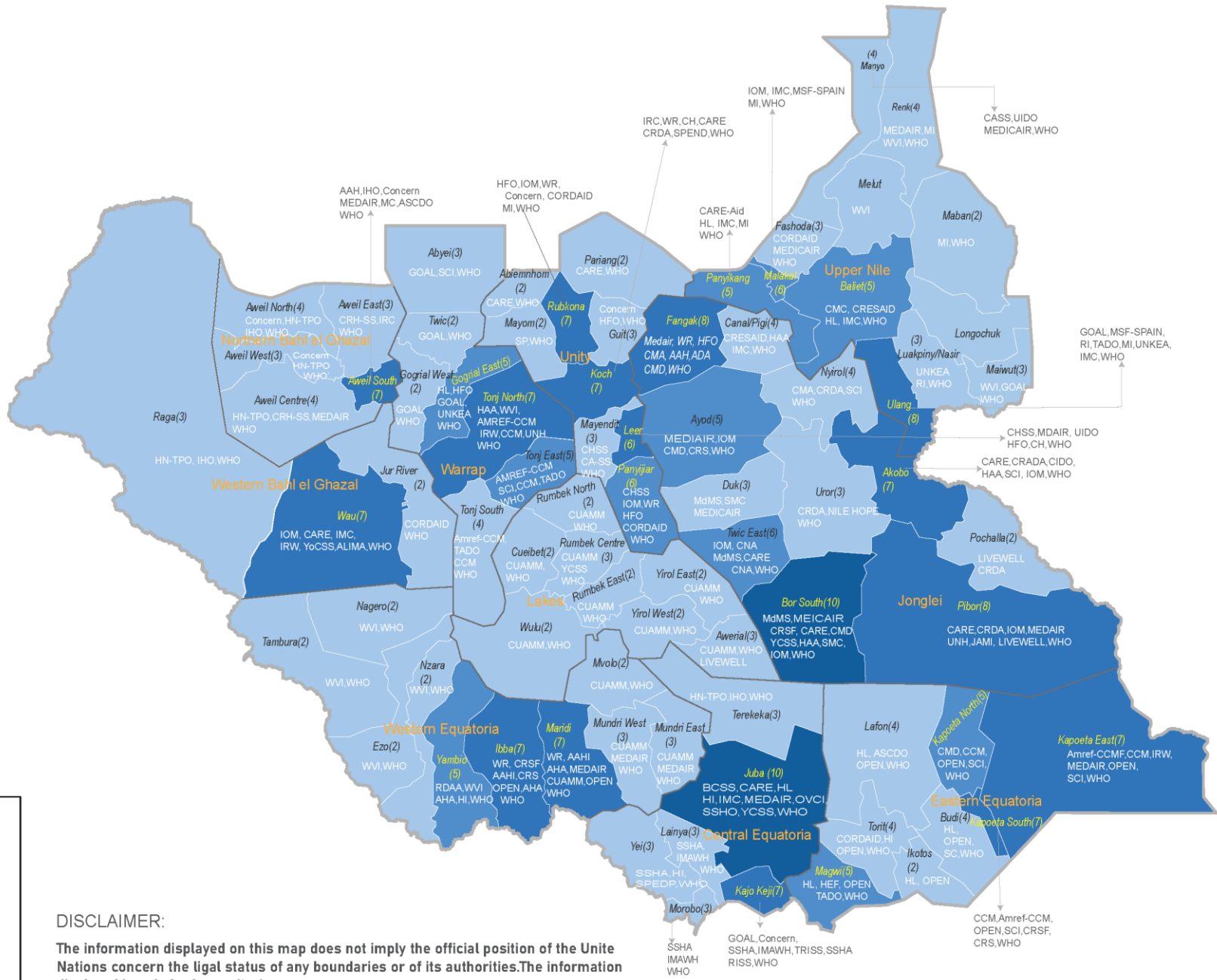
# Conclusions

- The overall performance of IDSR and EWARN reporting sites in week 17, 2022 is above the target of 80%
- **17,472** confirmed COVID-19 cases (CFR **0.78%**) **138** deaths reported since the onset of the outbreak
- HEV transmission has reduced from a peak of 60 cases every fortnight by week 8, 2021 to 30 cases every fortnight by week 16, 2022.
- Confirmed Measles outbreak in Bentiu, Unity with 31 cases and one death CFR 3.2%
- Confirmed Meningitis outbreak in Northern Bah Elgazal state
- Confirmed anthrax (18) cases have been reported in Gogrial West county with 8 tested positive

# Recommendations

- Partners should continue supporting County Health Departments (CHD) & State Ministries of Health on timely IDSR/EWARN reporting
- Health facilities should conduct initial investigation on suspected epidemic prone diseases and collect samples
- Support the multicluster HEV response strategy in Bentiu IDP camp and the ongoing cholera outbreak
- Strengthen surveillance for Meningitis in NBGZ and Anthrax in Warrap states
- Enhance COVID-19 surveillance, investigate ARI/ILI/SARI cases, and optimize SARS-COV2 Ag-RDT use
- Implement the accelerated COVID-19 vaccine absorption plan to attain 70% coverage by July 2022
- Conduct reactive measles vaccination campaign in Torit and Tambura county and mobilize communities countrywide to enhance routine immunization

# Partners across South Sudan



DISCLAIMER:

The information displayed on this map does not imply the official position of the United Nations concerning the legal status of any boundaries or of its authorities. The information displayed is only for humanitarian purposes.

Production Date: Feb, 2022

# IDSR timeliness & completeness performance at county level for week 17 and 16 of 2022 (1)



| STATE | COUNTY        | Number of reporting sites | No. of HF's Reported on Time in WK 167 | Timeliness Percentage of WK 17 | No. of HF's Reported regardless of time in WK17 | Completeness Percentage of WK 17 | No. of HF's Reported regardless of time in WK 16 | Completeness Percentage of WK 16 |
|-------|---------------|---------------------------|--|--------------------------------|---|----------------------------------|--|----------------------------------|
| Lakes | Cueibet       | 15                        | 15                                     | 100%                           | 15  | 100%                             | 15   | 100%                             |
| Lakes | Rumbek North  | 7                         | 7                                      | 100%                           | 7   | 100%                             | 7  | 100%                             |
| Lakes | Wulu          | 14                        | 14                                     | 100%                           | 14  | 100%                             | 14   | 100%                             |
| Lakes | Rumbek Centre | 23                        | 23                                     | 100%                           | 23  | 100%                             | 23   | 100%                             |
| Lakes | Yirol West    | 12                        | 12                                     | 100%                           | 12  | 100%                             | 12   | 100%                             |
| Lakes | Yirol East    | 11                        | 11                                     | 100%                           | 11  | 100%                             | 11   | 100%                             |
| NBGZ  | Aweil Centre  | 15                        | 15                                     | 100%                           | 15  | 100%                             | 15   | 100%                             |
| Lakes | Rumbek East   | 24                        | 23                                     | 96%                            | 23  | 96%                              | 24   | 100%                             |
| CES   | Juba          | 46                        | 41                                     | 89%                            | 44  | 96%                              | 44   | 96%                              |
| NBGZ  | Aweil South   | 11                        | 9                                      | 82%                            | 9   | 82%                              | 11   | 100%                             |
| CES   | Morobo        | 5                         | 4                                      | 80%                            | 4   | 80%                              | 4  | 80%                              |
| CES   | Yei           | 17                        | 13                                     | 76%                            | 16  | 94%                              | 16   | 94%                              |
| CES   | Lainya        | 16                        | 10                                     | 63%                            | 10  | 63%                              | 10   | 63%                              |
| CES   | Kajo Keji     | 17                        | 10                                     | 59%                            | 12  | 71%                              | 15   | 88%                              |
| NBGZ  | Aweil West    | 27                        | 15                                     | 56%                            | 27  | 100%                             | 27   | 100%                             |
| CES   | Terekeka      | 20                        | 11                                     | 55%                            | 11  | 55%                              | 11   | 55%                              |
| NBGZ  | Aweil North   | 25                        | 12                                     | 48%                            | 12  | 48%                              | 20   | 80%                              |
| WBGZ  | Wau           | 31                        | 8                                      | 26%                            | 27  | 87%                              | 30   | 97%                              |
| WBGZ  | Jur River     | 40                        | 0                                      | 0%                             | 32  | 80%                              | 33   | 83%                              |
| WBGZ  | Raja          | 15                        | 0                                      | 0%                             | 8   | 53%                              | 9  | 60%                              |
| NBGZ  | Aweil East    | 37                        | 0                                      | 0%                             | 10  | 27%                              | 5  | 14%                              |
| Lakes | Awerial       | 7                         | 0                                      | 0%                             | 0   | 0%                               | 7  | 100%                             |

| STATE | COUNTY      | Number of reporting sites | No. of HF's Reported on Time in WK 17 | Timeliness Percentage of WK 17 | No. of HF's Reported regardless of time in 17 | Completeness Percentage of WK 17 | No. of HF's Reported regardless of time in WK 16 | Completeness Percentage of WK 16 |
|-------|-------------|---------------------------|---------------------------------------|--------------------------------|---|----------------------------------|--|----------------------------------|
| Unity | Abiemnhom   | 4                         | 4                                     | 100%                           | 4   | 100%                             | 4  | 100%                             |
| WES   | Nzara       | 20                        | 20                                    | 100%                           | 20  | 100%                             | 20   | 100%                             |
| WES   | Nagero      | 10                        | 10                                    | 100%                           | 10  | 100%                             | 10   | 100%                             |
| WES   | Mundri West | 21                        | 21                                    | 100%                           | 21  | 100%                             | 21   | 100%                             |
| WES   | lbba        | 11                        | 11                                    | 100%                           | 11  | 100%                             | 11   | 100%                             |
| WES   | Mundri East | 19                        | 18                                    | 95%                            | 18  | 95%                              | 19   | 100%                             |
| WES   | Mvolo       | 11                        | 10                                    | 91%                            | 10  | 91%                              | 10   | 91%                              |
| WES   | Yambio      | 42                        | 37                                    | 88%                            | 42  | 100%                             | 42   | 100%                             |
| Unity | Koch        | 7                         | 6                                     | 86%                            | 6   | 86%                              | 7  | 100%                             |
| Unity | Mayendit    | 7                         | 6                                     | 86%                            | 6   | 86%                              | 7  | 100%                             |
| Unity | Mayom       | 13                        | 11                                    | 85%                            | 12  | 92%                              | 13   | 100%                             |
| Unity | Leer        | 11                        | 9                                     | 82%                            | 9   | 82%                              | 10   | 91%                              |
| WES   | Ezo         | 32                        | 26                                    | 81%                            | 31  | 97%                              | 32   | 100%                             |
| Unity | Guit        | 7                         | 5                                     | 71%                            | 5   | 71%                              | 6  | 86%                              |
| Unity | Rubkona     | 20                        | 9                                     | 45%                            | 12  | 60%                              | 15   | 75%                              |
| Unity | Panyijiar   | 16                        | 7                                     | 44%                            | 12  | 75%                              | 12   | 75%                              |
| WES   | Tambura     | 28                        | 12                                    | 43%                            | 26  | 93%                              | 28   | 100%                             |
| Unity | Pariang     | 11                        | 3                                     | 27%                            | 3   | 27%                              | 3  | 27%                              |
| WES   | Maridi      | 26                        | 0                                     | 0%                             | 26  | 100%                             | 26   | 100%                             |

# IDSR timeliness & completeness performance at county level for week 17 and 16 of 2022 (2)



| STATE   | COUNTY        | Number of reporting sites | No. of HFs Reported on Time in WK 17 | Timeliness Percentage of WK 17 | No. of HFs Reported regardless of time in WK 17 | Completeness Percentage of WK 17 | No. of HFs Reported regardless of time in WK 16 | Completeness Percentage of WK 16 |
|---------|---------------|---------------------------|--------------------------------------|--------------------------------|---|----------------------------------|---|----------------------------------|
| Jonglei | Duk           | 15                        | 15                                   | 100%                           | 15  | 100%                             | 15  | 100%                             |
| EES     | Torit         | 20                        | 17                                   | 85%                            | 17  | 85%                              | 19  | 95%                              |
| Jonglei | Fangak        | 19                        | 14                                   | 74%                            | 14  | 74%                              | 14  | 74%                              |
| Jonglei | Nyirrol       | 10                        | 7                                    | 70%                            | 7   | 70%                              | 7   | 70%                              |
| EES     | Lopa Lafon    | 18                        | 10                                   | 56%                            | 13  | 72%                              | 12  | 67%                              |
| Jonglei | Ayod          | 15                        | 8                                    | 53%                            | 8   | 53%                              | 10  | 67%                              |
| EES     | Ikotos        | 27                        | 14                                   | 52%                            | 21  | 78%                              | 21  | 78%                              |
| EES     | Kapoeta East  | 12                        | 6                                    | 50%                            | 6   | 50%                              | 7   | 58%                              |
| EES     | Kapoeta South | 10                        | 4                                    | 40%                            | 9   | 90%                              | 9   | 90%                              |
| EES     | Budi          | 21                        | 6                                    | 29%                            | 6   | 29%                              | 12  | 57%                              |
| Jonglei | Pibor         | 9                         | 2                                    | 22%                            | 4   | 44%                              | 2   | 22%                              |
| Jonglei | Bor           | 35                        | 4                                    | 11%                            | 21  | 60%                              | 20  | 57%                              |
| Jonglei | Pochalla      | 7                         | 0                                    | 0%                             | 7   | 100%                             | 7   | 100%                             |
| EES     | Magwi         | 22                        | 0                                    | 0%                             | 13  | 59%                              | 17  | 77%                              |
| Jonglei | Canal Pigi    | 12                        | 0                                    | 0%                             | 6   | 50%                              | 4   | 33%                              |
| Jonglei | Akobo         | 8                         | 0                                    | 0%                             | 2   | 25%                              | 2   | 25%                              |
| Jonglei | Twic East     | 11                        | 0                                    | 0%                             | 0   | 0%                               | 9   | 82%                              |
| Jonglei | Uror          | 8                         | 0                                    | 0%                             | 0   | 0%                               | 0   | 0%                               |
| EES     | Kapoeta North | 16                        | 0                                    | 0%                             | 0   | 0%                               | 0   | 0%                               |

| STATE      | COUNTY         | Number of reporting sites | No. of HFs Reported on Time in WK 17 | Timeliness Percentage of WK 17 | No. of HFs Reported regardless of time in WK 17 | Completeness Percentage of WK 17 | No. of HFs Reported regardless of time in WK 16 | Completeness Percentage of WK 16 |
|------------|----------------|---------------------------|--------------------------------------|--------------------------------|---|----------------------------------|---|----------------------------------|
| Warrap     | Tonj East      | 12                        | 12                                   | 100%                           | 12  | 100%                             | 12  | 100%                             |
| Warrap     | Tonj South     | 12                        | 12                                   | 100%                           | 12  | 100%                             | 12  | 100%                             |
| Warrap     | Gogrial East   | 15                        | 14                                   | 93%                            | 14  | 93%                              | 14  | 93%                              |
| Warrap     | Tonj North     | 19                        | 17                                   | 89%                            | 17  | 89%                              | 17  | 89%                              |
| Upper Nile | Longechuk      | 9                         | 8                                    | 89%                            | 9   | 100%                             | 9   | 100%                             |
| Warrap     | Gogrial West   | 31                        | 27                                   | 87%                            | 28  | 90%                              | 28  | 90%                              |
| Upper Nile | Fashoda        | 16                        | 8                                    | 50%                            | 10  | 63%                              | 10  | 63%                              |
| Upper Nile | Luakpiny Nasir | 12                        | 5                                    | 42%                            | 8   | 67%                              | 8   | 67%                              |
| Upper Nile | Manyo          | 11                        | 4                                    | 36%                            | 5   | 45%                              | 11  | 100%                             |
| Warrap     | Abyei          | 9                         | 3                                    | 33%                            | 3   | 33%                              | 3   | 33%                              |
| Upper Nile | Maban          | 17                        | 5                                    | 29%                            | 11  | 65%                              | 12  | 71%                              |
| Upper Nile | Makal          | 7                         | 1                                    | 14%                            | 5   | 71%                              | 7   | 100%                             |
| Upper Nile | Ulang          | 14                        | 2                                    | 14%                            | 4   | 29%                              | 7   | 50%                              |
| Upper Nile | Baliet         | 4                         | 0                                    | 0%                             | 4   | 100%                             | 4   | 100%                             |
| Upper Nile | Akoka          | 5                         | 0                                    | 0%                             | 5   | 100%                             | 5   | 100%                             |
| Upper Nile | Maiwut         | 5                         | 0                                    | 0%                             | 4   | 80%                              | 3   | 60%                              |
| Upper Nile | Panyikang      | 3                         | 0                                    | 0%                             | 2   | 67%                              | 2   | 67%                              |
| Upper Nile | Renk           | 11                        | 0                                    | 0%                             | 6   | 55%                              | 6   | 55%                              |
| Warrap     | Twic           | 26                        | 0                                    | 0%                             | 14  | 54%                              | 17  | 65%                              |
| Upper Nile | Melut          | 8                         | 0                                    | 0%                             | 2   | 25%                              | 6   | 75%                              |

**Thanks to the State Surveillance Officers, County Surveillance Officers and Health Facility in-charges for sharing the weekly IDSR data**

**Thanks to all partners for supporting IDSR weekly reporting and sharing the line lists**

**To access the IDSR bulletins for 2021 use the link below:**

**<https://www.afro.who.int/publications/south-sudan-weekly-disease-surveillance-bulletin-2021>**

## This bulletin is produced by the Ministry of Health with Technical support from WHO

For more help and support, please contact:

**Dr. John Rumunu**

Director General Preventive Health Services

Ministry of Health

Republic of South Sudan

Telephone: +211924767490

Email: ori.moiga@gmail.com

### ISDR Bulletin Editorial Team

1. Mr. Ajak Ater, MoH - Email: ajakater014@gmail.com
2. Mrs. Sheila Baya, WHO - Email: bayas@who.int
3. Mr. Robert Lasu Martin, WHO - Email: lasur@who.int
4. Mrs. Rose Dagama, WHO - Email: dagamaa@who.int
5. Dr. Abraham Adut, WHO - Email: abenegroa@who.int
6. Dr. Alice Igale Lado, WHO - Email: ladua@who.int
7. Dr. Joseph Wamala, WHO - Email: wamalaj@who.int
8. Dr. Argata Guracha Guyo, WHO - Email: guyo@who.int

### Notes

WHO and the Ministry of Health gratefully acknowledge the surveillance officers [at state, county, and health facility levels], health cluster and health pooled fund (HPF) partners who have reported the data used in this bulletin. We would also like to thank ECHO and USAID for providing financial support.

The data has been collected with support from the EWARS project. This is an initiative to strengthen early warning, alert and response in emergencies. It includes an online, desktop and mobile application that can be rapidly configured and deployed in the field. It is designed with frontline users in mind, and built to work in difficult and remote operating environments. This bulletin has been automatically published from the EWARS application.

More information can be found at <http://ewars-project.org>

