



### NAMIBIA COVID-19 SITUATION REPORT NO. 724

Outbreak Name	COVID-19 outbreak	Country affected	Namibia
Date & Time	13.03 2022 17h00	Investigation start Date	13 March 2020
Prepared by	Surveillance Team		

#### HIGHLIGHTS/SITUATION UPDATE (13/03/2022)

#### CUMULATIVE

Tested 968 999

Confirmed 157 449

Active 222

Recovered 155 286

Vaccinated

1<sup>st</sup> doses 447 678 2<sup>nd</sup> doses 253 557 3<sup>rd</sup> doses 32 980

Deaths 4 014

#### TOTAL TODAY

Tested 758

Confirmed 11

Active 222

Recovered 222

Vaccinated

1<sup>st</sup> doses 133 2<sup>nd</sup> doses 25 3<sup>rd</sup> doses 61

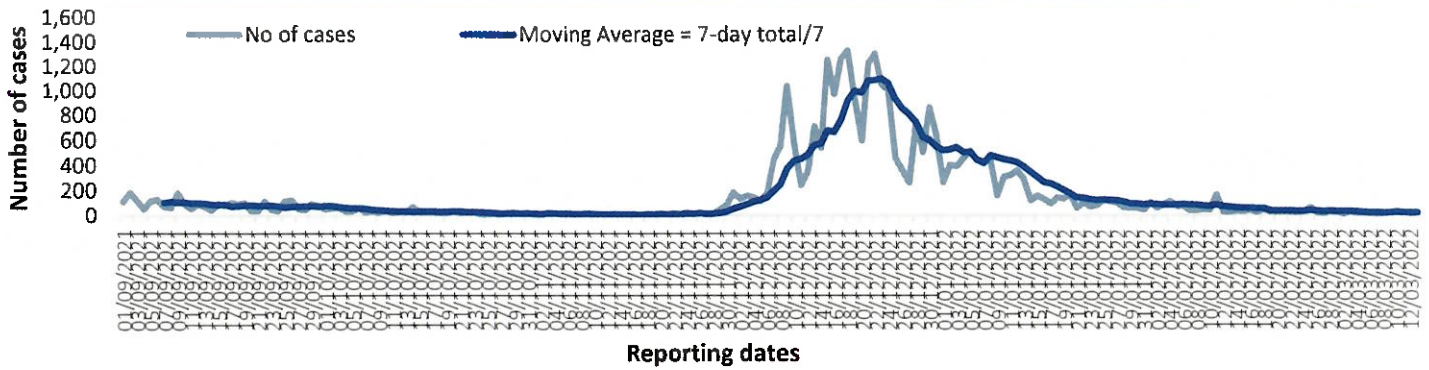
Deaths 0

- A total of **157 449** cases have been recorded to-date, representing **6%** of the total population (**2 550 226**).
- More female cases **83 528 (53%)** have been recorded.
- Of the total confirmed cases, **5 323 (3%)** are Health Workers, with **1** new confirmation today.
  - **4 507 (85%)** State; **807 (15%)** Private, **8 (0.2%)** Non-Governmental Organizations.
  - **5 316 (100%)** recoveries and **25 (0.5%)** deaths.
- The recovery rate now stands at **99%**.
- Khomas and Erongo regions reported the highest number of cases with **51 050 (32%)** and **22 673 (14%)** respectively.
- Of the total fatalities **3 685 (92%)** are COVID-19 deaths while **329 (8%)** are COVID-19 related deaths.
- The case fatality rate now stands at **2.6%**.

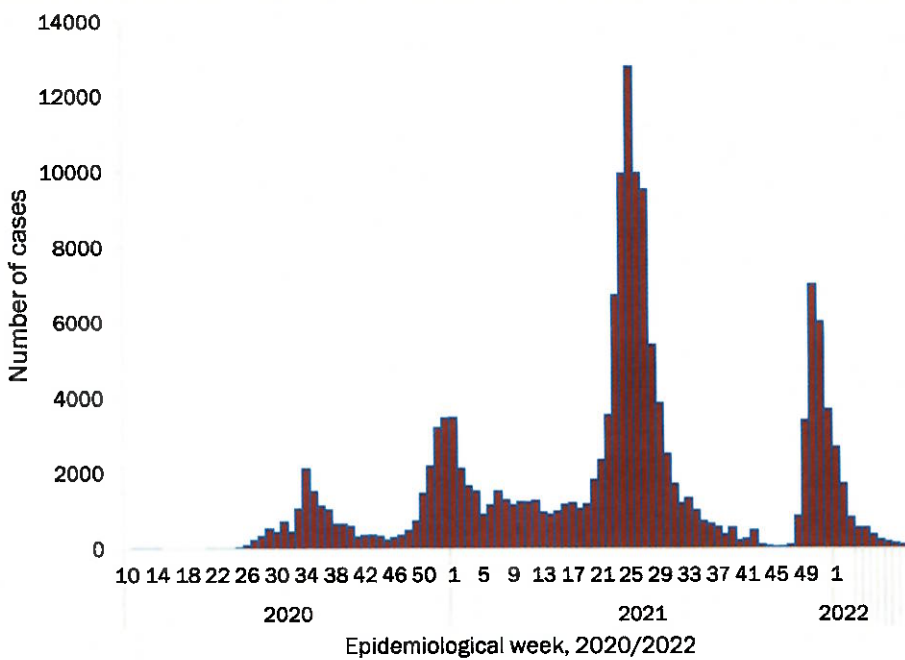
**Table 1: Distribution of confirmed COVID-19 cases by region, 13 March 2022**

Region	New cases	New re-infections	Cummulative re-infections	Cummulative New cases	Active cases	Recoveries	Cumulative Deaths	Cumulative deaths with co-morbidities	Non-COVID deaths	Health Workers
Erongo	2	0	359	22 673	38	22563	426	353	5	493
Hardap	0	0	67	8 385	1	8186	265	168	0	160
Kharas	1	0	187	9 944	9	9962	160	137	0	295
Kavango East	0	0	50	6 355	5	6170	228	132	2	286
Kavango West	0	0	4	842	0	823	23	21	0	48
Khomas	1	0	890	51 050	78	50960	901	705	1	1 816
Kunene	0	0	53	4 998	5	4893	153	108	0	151
Oshana	0	0	42	6 048	16	5868	204	124	2	221
Omaheke	1	0	60	5187	3	4953	290	204	1	143
Omusati	0	0	42	7587	1	7285	343	211	0	266
Oshana	1	0	92	10625	15	10307	394	243	1	607
Oshikoto	2	0	57	7967	20	7794	208	159	2	366
Otjozondjupa	3	1	162	12220	25	12072	284	194	1	343
Zambezi	0	0	23	3568	6	3450	135	77	0	128
<b>Total</b>	<b>11</b>	<b>1</b>	<b>2 088</b>	<b>157 449</b>	<b>222</b>	<b>155286</b>	<b>4 014</b>	<b>2 836</b>	<b>15</b>	<b>5 323</b>

## EPIDEMIOLOGICAL SITUATION IN NAMIBA



**Figure 2: The 7 days moving average line chart for confirmed COVID-19 cases, 13 March 2022**



- The highest peak of **12 787 (8%)** cases was recorded during week 25 of 2021 (Figure 3).
- The country has started seeing a gradual reduction in the average number of confirmed cases from 1424 to 29 from epi-week 26 to 40 of 2021.
- Another peak of **7005** cases was recorded in week 50 of 2021
- The number of cases have decreased in the last seven weeks as seen in the graph.

- The National Call Center continues operations for 24 hours daily.
- Today (13/03/2022), **224** calls were answered.

**Figure 3: Epi-curve for confirmed COVID-19 cases, 13 March 2022**

**Table 4: Number of people in quarantine 13 March 2022**

Region	Newly quarantined 24 hours	Cumulative number	Number discharged	Number in quarantine now
Erongo	0	7 315	7 033	282
Hardap	0	3 263	3 263	0
Kavango (East and West)	0	1 686	1 673	13
Khomas	0	3 767	3 766	1
Kharas	0	10 000	10 000	0
Kunene	0	6 493	6 493	0
Ohangwena	0	924	924	0
Omaheke	0	19 863	19 778	85
Omusati	0	3 990	3 990	0
Oshana	0	400	400	0
Oshikoto	0	27 714	27 651	63
Otjozondjupa	0	1 932	1 932	0
Zambezi	0	2 184	2 148	36
<b>Total</b>	<b>0</b>	<b>89 531</b>	<b>89 051</b>	<b>480</b>

- Since March 2020, **89 531** people have been placed into quarantine around the country.
- A total of **480** people are currently in quarantine, with no new admissions.

**Table 3: COVID-19 specimen recorded at the Laboratories  
13 March 2022**

VARIABLES	TOTAL
Total samples received by the Laboratory	968 994
Total samples tested	950 663
Total samples re-tested	18 214
Total positive results	157 449
Total negative results	793 140
Total samples discarded	117
Invalid results	0
Total pending results	0
Indeterminant/Inconclusive	74
Suspected cases in 24 hours (excluding re-tests)	757

➤ The laboratory testing capacity has been enhanced; with a total of twenty-three (23) laboratories carrying out the testing of samples: NIP, Path-Care, UNAM Molecular, Central Veterinary Laboratory, Namib Poultry, NAMDEB, NamPath, Namibia Central Pathology, DiagnoLab, High Care, Alpha Medical Laboratory, Des-Jo Medical Test Centre, ProQuest Diagnostic Laboratory, MAXI, Medlink Laboratory Services, Biotech Medical, Covisure, Star Care, Soweto Medical Center, Hosea Kutako International Airport & Oshana Med Laboratory .

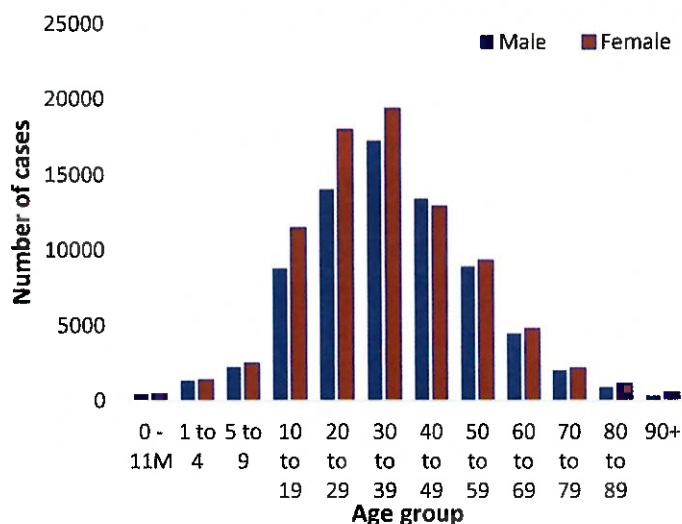
➤ To date, 968 999 tests (including 18 214 re-tests) have been conducted by authorized laboratories.

➤ Since the beginning of the outbreak, 168 630 contacts of confirmed cases have been identified, 12 new contacts were identified within the last 24 hours from 2 regions.

➤ Cumulatively, 166 817 contacts have completed their monitoring period, while 299 contacts are lost to follow-up and a total of 28 572 (18%) contacts of confirmed cases have tested positive.

➤ Today, 262 (91%) out of 288 active contacts were monitored.

- Of the total confirmed cases, 94 806 (60%) are in the 20-49 years age-brackets which constitutes the majority of the recorded cases.
- A total of 24 911 (16%) of the confirmed cases are among the 5-19 years category.
- A total of 18 145 (12%) of the confirmed cases are among the 50 - 59 years group.
- The under 5 years age group make up 3 484 (2%) of the total cases whereas, 16 103 (10%) are above 60 years of age.



**Figure 1: Age and Sex distribution of COVID-19 confirmed cases, 13 March 2022**

**Table 2: The current distribution for hospitalization of confirmed cases by region, 13 March 2022**

Region	Hospitalized confirmed cases		Vaccinated		Intensive Care Unit		Vaccinated	
	Current	Previous	1 <sup>st</sup> dose	2 <sup>nd</sup> dose	Current	Previous	1 <sup>st</sup> dose	2 <sup>nd</sup> dose
Erongo	2	2	0	0	0	0	0	0
Hardap	1	1	0	0	0	0	0	0
ǀKaras	2	2	0	0	0	0	0	0
Kavango East	1	2	0	0	1	0	0	0
Kavango West	0	0	0	0	0	0	0	0
Khomas	5	4	0	1	3	2	0	0
Kunene	0	0	0	0	0	0	0	0
Oshana	4	4	0	2	0	0	0	0
Oshikoto	5	5	0	0	0	0	0	0
Otjozondjupa	0	1	0	0	0	0	0	0
Zambezi	0	0	0	0	0	0	0	0
<b>Total</b>	<b>22</b>	<b>23</b>	<b>0</b>	<b>3</b>	<b>4</b>	<b>2</b>	<b>0</b>	<b>0</b>

**Table 6: Summary of COVID-19 vaccine 3<sup>rd</sup> doses administered, 13 March 2022**

Region	Cumulative no. of persons vaccinated			
	Sinopharm	AstraZeneca	Pfizer	Booster Doses J&J
Erongo	1 581	601	2 722	331
Hardap	1 912	370	878	39
Kharas	758	161	291	60
Kavango East	492	193	228	410
Kavango West	439	247	204	192
Khomas	2 416	868	4 987	526
Kunene	1 482	376	579	454
Ohangwena	265	71	14	49
Omaheke	340	150	98	31
Omusati	804	308	367	60
Oshana	1 102	196	543	144
Oshikoto	760	159	181	28
Otjozondjupa	1 588	444	846	6
Zambezi	381	38	105	105
<b>Total</b>	<b>14 320</b>	<b>4 182</b>	<b>12 043</b>	<b>2 435</b>

**Table 5: Summary of COVID-19 vaccine doses administered, 13 March 2022**

Region	Cumulative no. of persons vaccinated with doses of Sinopharm, AstraZeneca, Sputnik V, Pfizer and Jassen & Johnson		Targeted Population	Vaccination Coverage (%)	Cumulative no. of Healthcare Workers vaccinated with doses of Sinopharm, AstraZeneca, Sputnik V, Pfizer and Jassen & Johnson	
	1 <sup>st</sup> doses	Fully vaccinated			1 <sup>st</sup> doses	Fully vaccinated
Erongo	41 727	37 102	161 966	23%	1 431	1 095
Hardap	27 334	23 716	69 121	34%	540	447
Kharas	22 732	19 206	69 786	27%	815	489
Kavango East	37 635	27 165	105 223	26%	1 263	1 009
Kavango West	27 617	20 569	57 210	36%	432	386
Khomas	100 382	88 051	362 620	24%	4 061	3 049
Kunene	26 825	22 089	72 991	30%	678	526
Ohangwena	28 305	24 365	174 546	14%	855	684
Omaheke	19 700	15 321	53 002	29%	374	270
Omusati	27 609	24 382	179 370	14%	1 000	790
Oshana	23 351	20 820	143 395	15%	1 612	1 331
Oshikoto	22 705	20 484	144 912	14%	863	740
Otjozondjupa	33 542	29 880	112 119	27%	896	651
Zambezi	8 214	7 533	73 010	10%	658	610
<b>Total</b>	<b>447 678</b>	<b>380 683</b>	<b>1 779 271</b>	<b>21%</b>	<b>15 478</b>	<b>12 077</b>

**PUBLIC HEALTH ACTION (S)**

- The COVID-19 vaccination programme is ongoing throughout the country.
- Public Health measures continue to be enforced as the situation is closely monitored.
- The government and development partners continue to prioritize the continuation of essential health services.

**CHALLENGES**

Slow vaccine uptake among members of the public, and circulation of anti-vaccination information.

**RECOMMENDATIONS**

Encourage the public to get vaccinated and strengthen community health awareness to counteract anti-vaccination information in circulation.

APPROVED

 .....

INCIDENT MANAGER  
13 MARCH 2022

 .....

SECRETARIAT

For enquiries, please contact  
**Namibia Public Health Emergency Operations Centre;**

 [PHEOC@mhss.gov.na](mailto:PHEOC@mhss.gov.na)

 0800 100 100

 0851 100 100