



## NAMIBIA COVID-19 SITUATION REPORT NO. 657

Outbreak Name	COVID-19 outbreak	Country affected	Namibia
Date & Time	04.01. 2022 17h00	Investigation start Date	13 March 2020
Prepared by	Surveillance Team		

### HIGHLIGHTS/SITUATION UPDATE (04/01/2022)

CUMULATIVE	CUMULATIVE
Tested 881 231	Tested 2 283
Confirmed 151 000	Confirmed 460
Active 12 983	Active 12 983
Recoveries 134 316	Recoveries 378
Vaccinated 1 <sup>st</sup> doses 406 267 2 <sup>nd</sup> doses 239 202 3 <sup>rd</sup> doses 6 537	Vaccinated 1 <sup>st</sup> doses 533 2 <sup>nd</sup> doses 327 3 <sup>rd</sup> doses 312
Deaths 3 686	Deaths 12

- A total of **151 000** cases have been recorded to-date, representing **6%** of the total population (**2 550 226**).
- More female cases **80 232 (53%)** have been recorded.
- Of the total confirmed cases, **5 163 (3%)** are Health Workers, with **15** new confirmations today.
  - 4 353 (84%) State; 802 (16%) Private, 8 (0.2%) Non-Governmental Organizations.
  - 5 007 (97%) recoveries and 25 (0.5%) deaths.

- The recovery rate now stands at **89%**.
- Khomas and Erongo regions reported the highest number of cases with **49 937 (33%)** and **21 952 (15%)** respectively.
- Of the total fatalities, **3 370 (91%)** are COVID-19 deaths while **316 (9%)** are COVID-19 related deaths.
- The case fatality rate now stands at **2.4%**.

**Table 1: Distribution of confirmed COVID-19 cases by region, 04 January 2022**

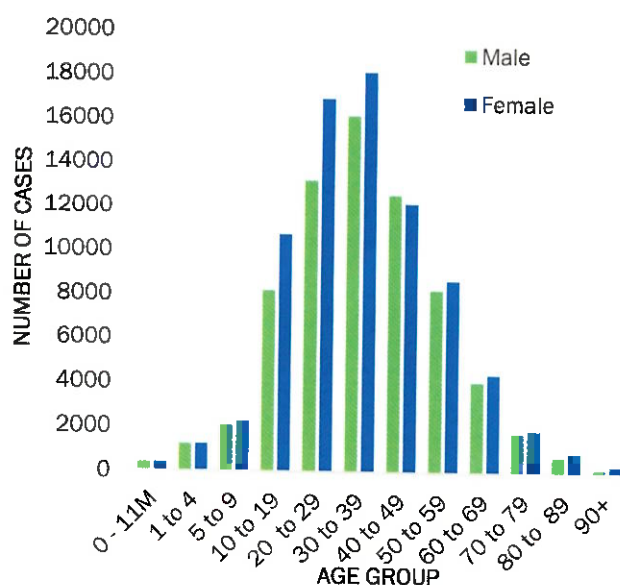
Region	Total cases daily	New reported re-infections	Total No. of cases	Active cases	Recoveries	Cumulative Deaths	Cumulative deaths with co-morbidities	Non-COVID deaths	Health Workers
Erongo	54	3	21 952	3 241	18 290	416	345	5	488
Hardap	1	0	8 183	99	7 822	262	164	0	153
ǀKaras	40	0	9 483	1 000	8 327	156	133	0	285
Kavango East	79	3	5 975	406	5 356	211	124	2	263
Kavango West	3	0	736	48	667	21	17	0	44
Khomas	118	12	49 937	5 193	43 861	882	688	1	1 787
Kunene	6	0	4 778	174	4 472	132	96	0	150
Ohangwena	23	1	5 742	327	5 242	171	100	2	212
Omaheke	12	0	4 676	480	3 937	259	179	0	140
Omusati	10	0	6 838	366	6 223	249	154	0	248
Oshana	15	0	10 210	712	9 158	339	204	1	590
Oshikoto	33	1	7 486	200	7 095	189	146	2	354
Otjozondjupa	51	0	11 658	483	10 894	280	190	1	331
Zambezi	15	0	3 346	254	2 973	119	67	0	118
<b>Total</b>	<b>460</b>	<b>20</b>	<b>151 000</b>	<b>12 983</b>	<b>134 317</b>	<b>3 686</b>	<b>2 607</b>	<b>14</b>	<b>5 163</b>

# EPIDEMIOLOGICAL SITUATION IN NAMIBIA

**Table 2: The current distribution for hospitalization of confirmed cases by region, 04 January 2022**

Region	Hospitalized confirmed cases		Vaccinated		Intensive Care Unit		Vaccinated	
	Current	Previous	1 <sup>st</sup> dose	2 <sup>nd</sup> dose	Current	Previous	1 <sup>st</sup> dose	2 <sup>nd</sup> dose
Erongo	25	25	0	5	4	4	0	0
Hardap	2	2	0	0	0	0	0	0
Kharas	13	13	0	0	0	0	0	0
Kavango East	8	7	0	2	0	0	0	0
Kavango West	3	4	0	1	0	0	0	0
Khomas	87	90	1	10	13	13	0	0
Kunene	26	26	0	10	0	0	0	0
Ohangwena	28	19	1	1	0	0	0	0
Omaheke	10	10	0	0	0	0	0	0
Omusati	29	49	0	0	0	0	0	0
Oshana	59	66	2	3	4	3	0	0
Oshikoto	16	6	1	1	5	6	0	0
Otjozondjupa	17	17	0	1	0	0	0	0
Zambezi	10	10	0	0	0	0	0	0
<b>Total</b>	<b>333</b>	<b>344</b>	<b>5</b>	<b>34</b>	<b>26</b>	<b>26</b>	<b>0</b>	<b>0</b>

- Of the total confirmed cases, **91 795 (61%)** are in the 20-49 years age-brackets which constitutes the majority of the recorded cases.
- A total of **23 634 (16%)** of the confirmed cases are among the 5-19 years category.
- A total of **17 477 (12%)** of the confirmed cases are among the 50 - 59 years group.
- The under 5 years age group make up **3 261 (2%)** of the total cases whereas, **14 833 (10%)** are above 60 years of age.

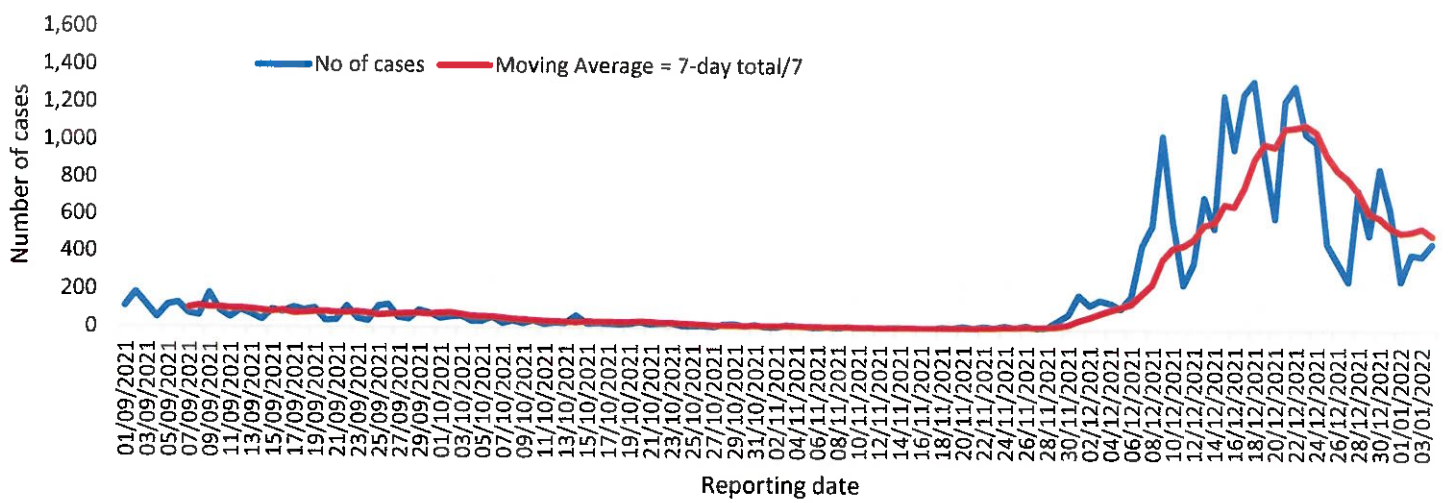


**Figure 1: Age and Sex distribution of COVID-19 confirmed cases, 04 January 2022**

- The laboratory testing capacity has been enhanced; with a total of twenty (20) laboratories carrying out the testing of samples: NIP, Path-Care, UNAM Molecular, Central Veterinary Laboratory, Namib Poultry, NAMDEB, NamPath, Namibia Central Pathology, DiagnoLab, High Care, Alpha Medical Laboratory, Des-Jo Medical Test Centre, ProQuest Diagnostic Laboratory, MAXI, Medlink Laboratory Services, Biotech Medical, Covisure, Star Care, Soweto Medical Center & Oshana Med Laboratory .
- To date, **881 231** tests (including **17 327** re-tests) have been conducted by authorized laboratories.
- Since the beginning of the outbreak, **159 963** contacts of confirmed cases have been identified, **425** new contacts were identified within the last 24 hours from **12** regions.
- Cumulatively, **155 408** contacts have completed their monitoring period, while **290** contacts are lost to follow-up and a total of **27 436 (18%)** contacts of confirmed cases have tested positive.
- Today, **1 759 (60%)** out of **2 901** active contacts were monitored.

**Table 3: COVID-19 specimen recorded at the Laboratories 04 January 2022**

VARIABLES	TOTAL
Total samples received by the Laboratory	881 368
Total samples tested	863 924
Total samples re-tested	17 327
Total positive results	151 000
Total negative results	712 881
Total samples discarded	117
Invalid results	0
Total pending results	0
Indeterminant/Inconclusive	43
Suspected cases in 24 hours (excluding re-tests)	2 238



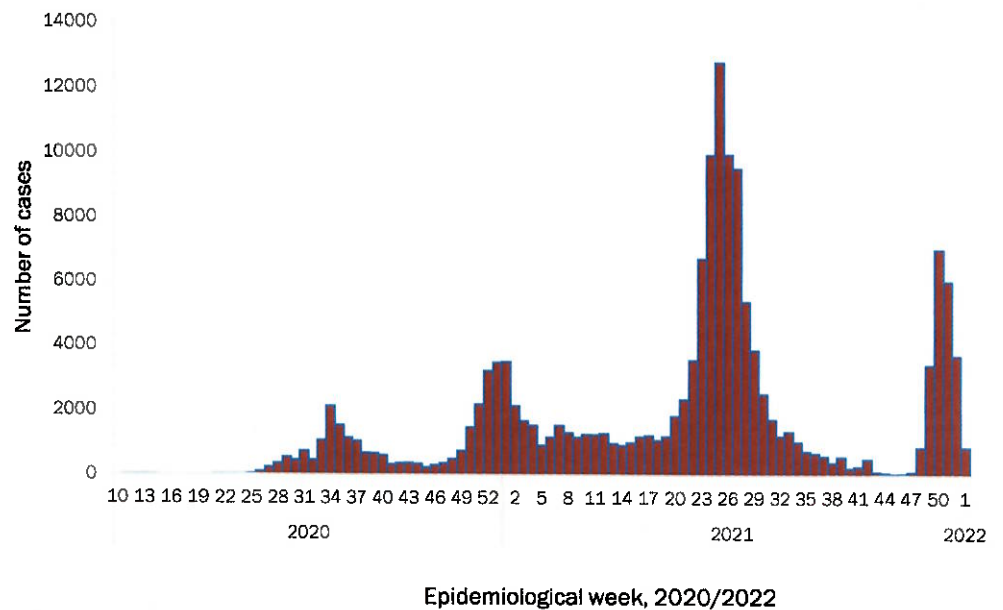
**Figure 2: The 7 days moving average line chart for confirmed COVID-19 cases, 04 January 2022**

➤ The highest peak of **12 787 (8%)** cases was recorded during week 25 of 2021 (Figure 3).

➤ The country has started seeing an increase in the daily number of confirmed cases from 13 in epi-week 47 to 526 in epi-week 52.

➤ The National Call Center continues operations for 24 hours daily.

➤ Today (04/01/2022), **661** calls were answered.



**Figure 3: Epi-curve for confirmed COVID-19 cases, 04 January 2022**

**Table 4: Number of people in quarantine 04 January 2022**

Region	Newly quarantined 24 hours	Cumulative number	Number discharged	Number in quarantine now
Erongo	0	6949	6947	2
Hardap	0	3263	3258	5
Kavango (East and West)	0	1673	1673	0
Khomas	0	3733	3728	5
Kharas	0	10000	9992	8
Kunene	0	6493	6493	0
Ohangwena	0	924	886	38
Omaheke	46	18267	18138	129
Omusati	0	3774	3611	163
Oshana	0	400	400	0
Oshikoto	64	26004	25792	212
Otjozondjupa	0	1932	1912	20
Zambezi	0	2107	2062	45
<b>Total</b>	<b>110</b>	<b>85 519</b>	<b>84 892</b>	<b>627</b>

➤ Since March 2020, **85 519** people have been placed into quarantine around the country.

➤ A total of **627** people are currently in quarantine, with **110** new admissions.

**Table 5: Summary of COVID-19 vaccine doses administered, 04 January 2022**

Region	Cumulative no. of persons vaccinated with doses of Sinopharm, AstraZeneca, Sputnik V, Pfizer and Jassen & Johnson		Targeted Population	Vaccination Coverage (%)	Cumulative no. of Healthcare Workers vaccinated with doses of Sinopharm, AstraZeneca, Sputnik V, Pfizer and Jassen & Johnson	
	1 <sup>st</sup> doses	Fully vaccinated			1 <sup>st</sup> doses	Fully vaccinated
Erongo	39 049	34 406	121 682	28%	1408	1071
Hardap	24 878	21 307	56 741	37%	525	432
Karas	20 574	17 056	55 489	31%	803	474
Kavango East	29 132	21 704	117 665	18%	1212	961
Kavango West	20 402	16 991	29 228	57%	417	377
Khomas	94 622	81 682	286 641	28%	3996	2973
Kunene	24 555	20 080	66 499	30%	658	514
Ohangwena	27 043	22 999	164 102	14%	819	642
Omaheke	18 727	14 300	51 765	28%	374	270
Omusati	26 247	22 927	139 451	16%	977	770
Oshana	21 739	19 238	126 374	15%	1565	1284
Oshikoto	21 478	19 120	124 395	15%	863	740
Otjozondjupa	30 323	26 606	97 903	27%	870	630
Zambezi	7 498	6 776	63 106	11%	633	590
<b>Total</b>	<b>406 267</b>	<b>345 192</b>	<b>1 501 041</b>	<b>23%</b>	<b>15120</b>	<b>11728</b>

**Table 6: Summary of COVID-19 vaccine 3<sup>rd</sup> doses administered, 04 January 2022**

Region	Cumulative no. of persons vaccinated		
	Sinopharm	AstraZeneca	Pfizer
Erongo	418	80	781
Hardap	196	0	299
Karas	153	24	50
Kavango East	119	2	61
Kavango West	54	0	18
Khomas	762	355	1379
Kunene	77	17	5
Ohangwena	50	2	1
Omaheke	30	3	9
Omusati	166	23	62
Oshana	350	57	123
Oshikoto	196	32	13
Otjozondjupa	278	58	179
Zambezi	33	5	17
<b>Total</b>	<b>2 882</b>	<b>658</b>	<b>2 997</b>

**PUBLIC HEALTH ACTION (S)**

- The COVID-19 vaccination programme is ongoing throughout the country.
- Public Health measures continue to be enforced as the situation is closely monitored.
- The government and development partners continue to prioritize the continuation of essential health services.

**CHALLENGES**

- Slow vaccine uptake among members of the public, and circulation of anti-vaccination information.


**RECOMMENDATIONS**

- Encourage the public to get vaccinated and strengthen community health awareness to counteract anti-vaccination information in circulation.




APPROVED



INCIDENT-MANAGER  
04 JANUARY 2022



SECRETARIAT

For enquiries, please contact  
**Namibia Public Health Emergency Operations Centre;**  
 [PHEOC@mhss.gov.na](mailto:PHEOC@mhss.gov.na)  
 0800 100 100  
 0851 100 100