



NAMIBIA COVID-19 SITUATION REPORT NO. 630

Outbreak Name	COVID-19 outbreak	Country affected	Namibia
Date & Time	08.12.2021 20h00	Investigation start Date	13 March 2020
Prepared by	Surveillance Team		

HIGHLIGHTS/SITUATION UPDATE (08/12/2021)

CUMULATIVE	TOTAL TODAY
Tested 810 348	Tested 2 619
Confirmed 131 230	Confirmed 554
Active 1 797	Active 1 797
Recoveries 125 846	Recoveries 79
Vaccinated 1 st doses 385 973 2 nd doses 232 204	Vaccinated 1 st doses 2 136 2 nd doses 406
Death 3 575	Death 0

- A total of **131 230** cases have been recorded to-date, representing **5%** of the total population (**2 550 226**).
- More female cases **69 807 (53%)** have been recorded.
- Of the total confirmed cases, **4 491 (3%)** are Health Workers, with **36** new confirmations today.
 - 3 745 (83%) State; 738 (16%) Private, 8 (0.2%) Non-Governmental Organizations.
 - 4 361 (99%) recoveries and 25 (0.6%) deaths.
- The recovery rate now stands at **96%**.
- Khomas and Erongo regions reported the highest number of cases with **43 373 (33%)** and **18 679 (14%)** respectively.
- Of the total fatalities, **3 277 (92%)** are COVID-19 deaths while **298 (8%)** are COVID-19 related deaths. The case fatality rate now stands at **2.7%**.

Table 1: Distribution of confirmed COVID-19 cases by region, 08 December 2021

Region	Total cases daily	Total No. of cases	Active cases	Recoveries	Cumulative Deaths	Cumulative deaths with co-morbidities	Non-COVID deaths	Health Workers
Erongo	85	18 679	205	18 058	411	341	5	426
Hardap	2	7 634	18	7 358	258	161	0	137
Karas	22	7 978	70	7 756	152	130	0	246
Kavango East	3	5 536	12	5 314	209	122	1	246
Kavango West	0	645	0	626	19	16	0	42
Khomas	376	43 373	1275	41 232	865	676	1	1 589
Kunene	0	3 754	10	3 620	124	89	0	99
Ohangwena	0	5 123	3	4 962	156	97	2	163
Omaheke	6	4 025	20	3 752	253	174	0	123
Omusati	1	5 817	12	5 574	231	139	0	181
Oshana	3	9 195	22	8 841	331	196	1	533
Oshikoto	3	6 776	10	6 589	175	140	2	319
Otjozondjupa	50	9 670	122	9 274	274	185	0	280
Zambezi	3	3 025	18	2 890	117	67	0	107
Total	554	131 230	1 797	125 846	3 575	2 533	12	4 491

EPIDEMIOLOGICAL SITUATION IN NAMIBIA

- Of the total confirmed cases, **77 973 (59%)** are in the 20-49 years age-brackets which constitutes the majority of the recorded cases.
- A total of **21 819 (17%)** of the confirmed cases are among the 5-19 years category.
- A total of **15 390 (12%)** of the confirmed cases are among the 50 - 59 years group.
- The under 5 years age group make up **2 950 (2%)** of the total cases whereas, **13 089 (10%)** are above 60 years of age.

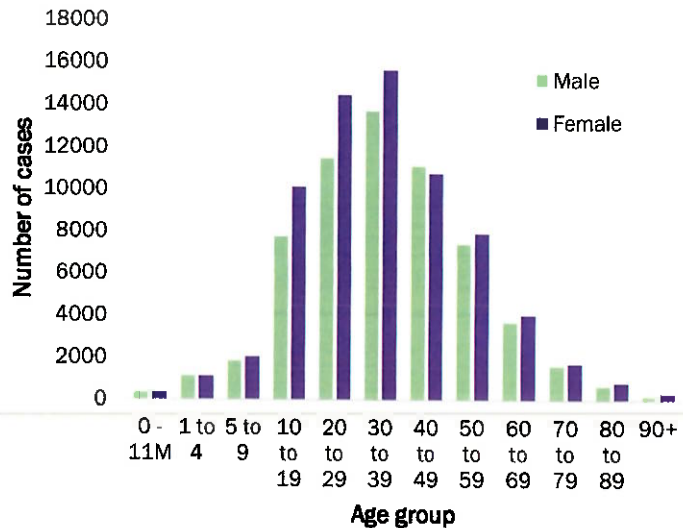


Figure 1: Age and Sex distribution of COVID-19 confirmed cases 08 December 2021

Table 2: The current distribution for hospitalization of confirmed cases by region, 08 December 2021

Region	Hospitalized confirmed cases	Intensive Care Unit
Erongo	7	0
Hardap	0	0
Kharas	5	0
Kavango East	1	0
Kavango West	0	0
Khomas	41	4
Kunene	2	0
Ohangwena	2	0
Omaheke	0	0
Omusati	2	0
Oshana	3	0
Oshikoto	0	0
Otjozondjupa	5	0
Zambezi	6	0
Total	74	4

Table 3: COVID-19 specimen recorded at the Laboratories 08 December 2021

VARIABLES	TOTAL
Total samples received by the Laboratory	810 465
Total samples tested	795 661
Total samples re-tested	14 687
Total positive results	131 230
Total negative results	664 421
Total samples discarded	117
Invalid results	0
Total pending results	0
Indeterminant/Inconclusive	10
Suspected cases in 24 hours (excluding re-tests)	2 544

- The laboratory testing capacity has been enhanced; with a total of sixteen (16) laboratories carrying out the testing of samples: NIP, Path-Care, UNAM Molecular, Central Veterinary Laboratory, Namib Poultry, NAMDEB, NamPath, Namibia Central Pathology, DiagnoLab, High Care, Alpha Medical Laboratory, Des-Jo Medical Test Centre, ProQuest Diagnostic Laboratory, MAXI, Medlink Laboratory Services and Biotech Medical.
- To date, **810 348** tests (including **14 687** re-tests) have been conducted by authorized laboratories.
- Since the beginning of the outbreak, **148 535** contacts of confirmed cases have been identified, **188** new contacts were identified within the last 24 hours from 13 regions.
- Cumulatively, **146 022** contacts have completed their monitoring period, while **290** contacts are lost to follow-up and a total of **25 569 (20%)** contacts of confirmed cases have tested positive.
- Today, **230 (27%)** out of **851** active contacts were monitored.

- The highest peak of **12 787 (10%)** cases was recorded during week 25 of 2021 (Figure 1).
- The country has started seeing an increase in the daily number of confirmed cases from 13 in epi-week 47 to 122 in epi-week 48.

- The National Call Center continues operations for 24 hours daily.
- Today (08/12/2021), **700** calls were answered.

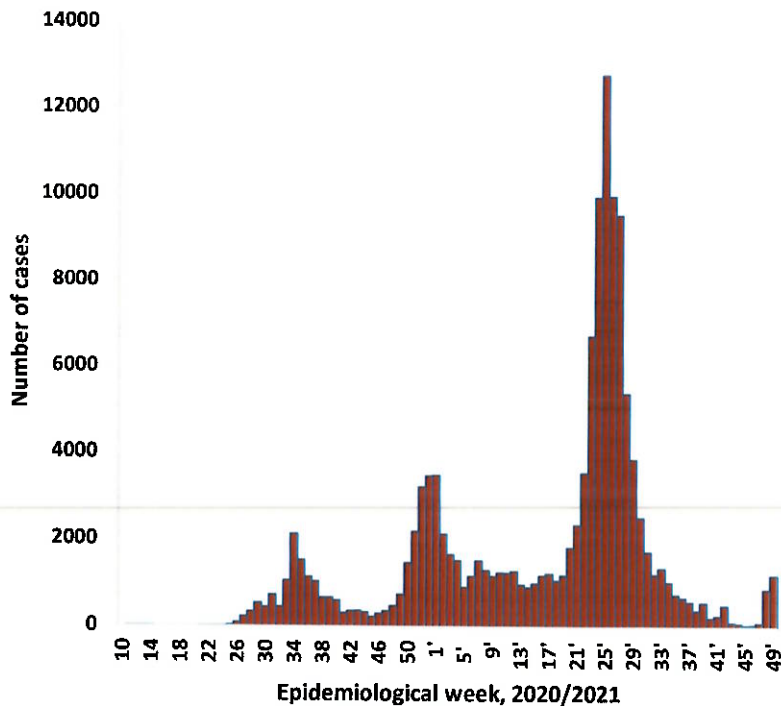


Figure 2: Epi-curve for confirmed COVID-19 cases, 08 December 2021

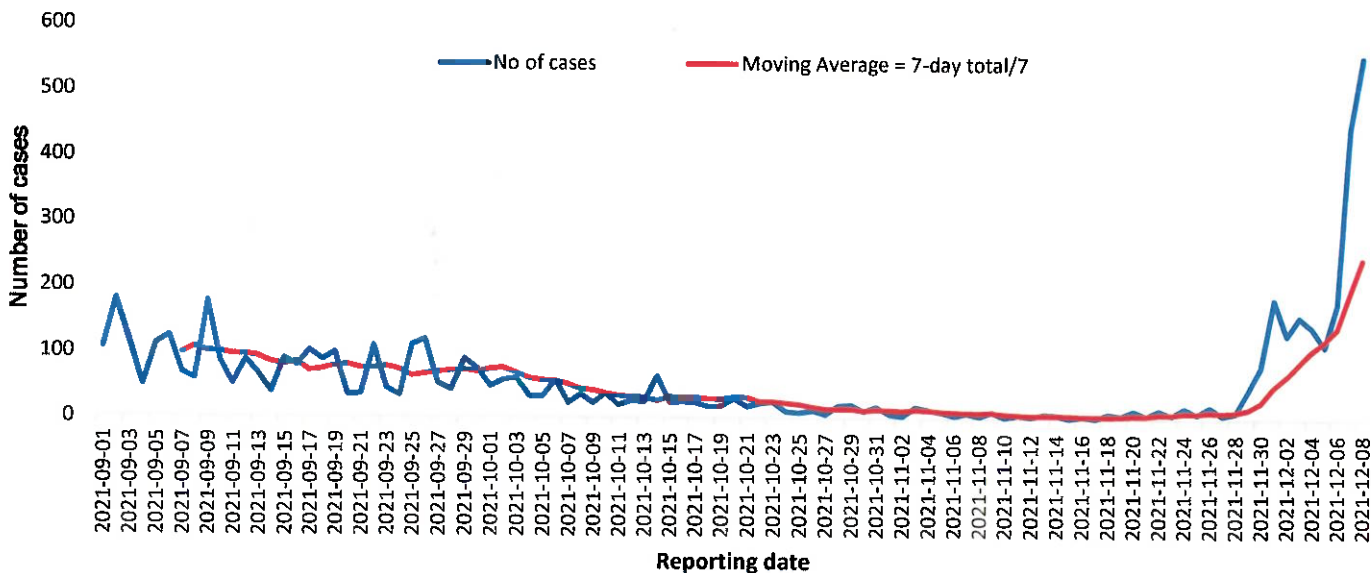


Figure 3: The 7 days moving average line chart for confirmed COVID-19 cases, 08 December 2021

Table 4: Number of people in quarantine 08 December 2021

Region	Newly quarantined 24 hours	Cumulative number	Number discharged	Number in quarantine now
Erongo	0	6 939	6 936	3
Hardap	14	3 255	3 252	3
Kavango (East and West)	0	1 673	1 673	0
Karas	0	10 000	9 949	51
Kunene	0	6 493	6 493	0
Ohangwena	0	880	880	0
Omaheke	0	17 790	17 695	95
Omusati	0	3 441	3 440	1
Oshana	0	400	400	0
Oshikoto	24	24 582	24 538	44
Otjozondjupa	0	1 932	1 880	52
Zambezi	0	2 032	2 032	0
Total	38	83 127	82 872	255

- Since March 2020, **83 127** people have been placed into quarantine around the country.
- A total of **255** people are currently in quarantine, with **38** new admissions.

Table 5: Summary of COVID-19 vaccine doses administered, 08 December 2021

Region	Cumulative no. of persons vaccinated with doses of Sinopharm, AstraZeneca, Sputnik V, Pfizer and Jassen & Johnson		Targeted Population	Vaccination Coverage (%)	Cumulative no. of Healthcare Workers vaccinated with doses of Sinopharm, AstraZeneca, Sputnik V, Pfizer and Jassen & Johnson	
	1 st doses	Fully vaccinated			1 st doses	Fully vaccinated
Erongo	37 795	33 029	121 682	27%	1 403	1 069
Hardap	23 062	19 587	56 741	34%	522	429
Kharas	19 655	16 124	55 489	29%	796	471
Kavango East	25 077	17 938	117 665	15%	1 187	942
Kavango West	17 638	14 696	29 228	49%	417	377
Khomas	92 071	78 933	286 641	27%	3 956	2 913
Kunene	23 975	19 413	66 499	29%	647	504
Ohangwena	25 968	21 821	164 102	13%	811	635
Omaheke	17 878	13 476	51 765	26%	373	269
Omusati	25 072	21 698	139 451	15%	956	748
Oshana	20 947	18 400	126 374	14%	1 527	1 261
Oshikoto	20 629	18 194	124 395	15%	861	740
Otjozondjupa	29 003	25 211	97 903	26%	866	627
Zambezi	7 203	6 443	63 106	10%	633	590
Total	385 973	324 963	1 501 041	22%	14 955	11 575

PUBLIC HEALTH ACTION (S)

- The COVID-19 vaccination programme is ongoing throughout the country.
- Public Health measures continue to be enforced as the situation is closely monitored.
- The government and development partners continue to prioritize the continuation of essential health services.

CHALLENGES

- Slow vaccine uptake among members of the public, and circulation of anti-vaccination information.

RECOMMENDATIONS

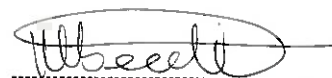
- Encourage the public to get vaccinated and strengthen community health awareness to counteract anti-vaccination information in circulation.

APPROVED


.....

INCIDENT MANAGER

08 DECEMBER 2021


.....

SECRETARIAT

For enquiries, please contact

Namibia Public Health Emergency Operations Centre;

 PHEOC@mhss.gov.na

 0800 100 100

 0851 100 100