



NAMIBIA COVID-19 SITUATION REPORT NO. 628

Outbreak Name	COVID-19 outbreak	Country affected	Namibia
Date & Time	06.12.2021 20h00	Investigation start Date	13 March 2020
Prepared by	Surveillance Team		

HIGHLIGHTS/SITUATION UPDATE (05/12/2021)

CUMULATIVE	TOTAL TODAY
Tested 805 032	Tested 1 827
Confirmed 130 230	Confirmed 179
Active 1 034	Active 1 034
Recoveries 125 609	Recoveries 69
Vaccinated 1 <sup>st</sup> doses 380 137    2 <sup>nd</sup> doses 231 069	Vaccinated 1 <sup>st</sup> doses 1 974    2 <sup>nd</sup> doses 455
Death 3 575	Death 1

- A total of **130 230** cases have been recorded to-date, representing **5%** of the total population (**2 550 226**).
- More female cases **69 276 (53%)** have been recorded.
- Of the total confirmed cases, **4 421 (3%)** are Health Workers, with **12** new confirmations today.
  - 3 689 (83%) State; 724 (16%) Private, 8 (0.2%) Non-Governmental Organizations.
  - 4 361 (99%) recoveries and 25 (0.6%) deaths.
- The recovery rate now stands at **96.5%**.
- Khomas and Erongo regions reported the highest number of cases with **42 655 (33%)** and **18 579 (14%)** respectively.
- Of the total fatalities, **3 277 (92%)** are COVID-19 deaths while **298 (8%)** are COVID-19 related deaths. The case fatality rate now stands at **2.7%**.

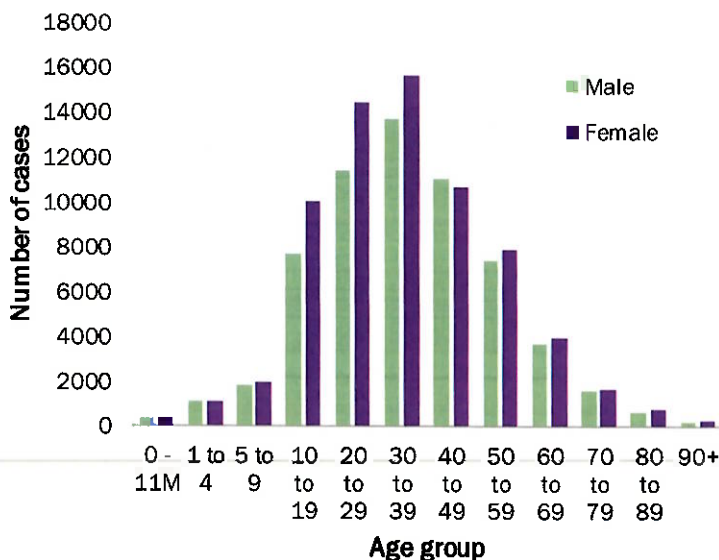
Table 1: Distribution of confirmed COVID-19 cases by region, 06 December 2021

Region	Total cases daily	Total No. of cases	Active cases	Recoveries	Cumulative Deaths	Cumulative deaths with co-morbidities	Non-COVID deaths	Health Workers
Erongo	10	18 579	105	18 058	411	341	5	420
Hardap	0	7 623	10	7 355	258	161	0	135
Karas	6	7 946	54	7 740	152	130	0	243
Kavango East	1	5 531	7	5 314	209	122	1	246
Kavango West	0	645	0	626	19	16	0	42
Khomas	120	42 655	758	41 031	865	676	1	1 540
Kunene	4	3 750	6	3 620	124	89	0	98
Ohangwena	0	5 122	2	4 962	156	97	2	163
Omaheke	0	4 017	12	3 752	253	174	0	123
Omusati	4	5 814	9	5 574	231	139	0	181
Oshana	8	9 185	22	8 831	331	196	1	532
Oshikoto	2	6 773	7	6 589	175	140	2	319
Otjozondjupa	15	9 570	29	9 267	274	185	0	272
Zambezi	9	3 020	13	2 890	117	67	0	107
<b>Total</b>	<b>179</b>	<b>130 230</b>	<b>1 034</b>	<b>125 609</b>	<b>3 575</b>	<b>2 533</b>	<b>12</b>	<b>4 421</b>



## EPIDEMIOLOGICAL SITUATION IN NAMIBIA

- Of the total confirmed cases, **77 146 (59%)** are in the 20-49 years age-brackets which constitutes the majority of the recorded cases.
- A total of **21 752 (17%)** of the confirmed cases are among the 5-19 years category.
- A total of **15 325 (12%)** of the confirmed cases are among the 50 - 59 years group.
- The under 5 years age group make up **2 952 (2%)** of the total cases whereas, **13 055 (10%)** are above 60 years of age.



**Figure 1: Age and Sex distribution of COVID-19 confirmed cases 06 December 2021**

**Table 2: The current distribution for hospitalization of confirmed cases by region, 06 December 2021**

Region	Hospitalized confirmed cases	Intensive Care Unit
Erongo	6	0
Hardap	0	0
ǀKaras	3	0
Kavango East	1	0
Kavango West	0	0
Khomas	24	3
Kunene	0	0
Ohangwena	0	0
Omaheke	0	0
Omusati	0	0
Oshana	1	0
Oshikoto	0	0
Otjozondjupa	0	0
Zambezi	4	0
<b>Total</b>	<b>39</b>	<b>3</b>

**Table 3: COVID-19 specimen recorded at the Laboratories 06 December 2021**

VARIABLES	TOTAL
Total samples received by the Laboratory	805 149
Total samples tested	790 479
Total samples re-tested	14 553
Total positive results	130 230
Total negative results	660 243
Total samples discarded	117
Invalid results	0
Total pending results	0
Indeterminant/Inconclusive	6
Suspected cases in 24 hours (excluding re-tests)	1 804

- The laboratory testing capacity has been enhanced; with a total of sixteen (16) laboratories carrying out the testing of samples: NIP, Path-Care, UNAM Molecular, Central Veterinary Laboratory, Namib Poultry, NAMDEB, NamPath, Namibia Central Pathology, DiagnoLab, High Care, Alpha Medical Laboratory, Des-Jo Medical Test Centre, ProQuest Diagnostic Laboratory, MAXI, Medlink Laboratory Services and Biotech Medical.
- To date, **805 032** tests (including **14 553** re-tests) have been conducted by authorized laboratories.
- Since the beginning of the outbreak, **148 102** contacts of confirmed cases have been identified, **169** new contacts were identified within the last 24 hours from 11 regions.
- Cumulatively, **145 752** contacts have completed their monitoring period, while **290** contacts are lost to follow-up and a total of **25 550 (20%)** contacts of confirmed cases have tested positive.
- Today, **202 (31%)** out of **657** active contacts were monitored.

- The highest peak of **12 787 (10%)** cases was recorded during week 25 of 2021 (Figure 1).
- The country has started seeing an increase in the daily number of confirmed cases from 13 in epi-week 47 to 122 in epi-week 48.

- The National Call Center continues operations for 24 hours daily.
- Today (06/12/2021), **609** calls were answered.

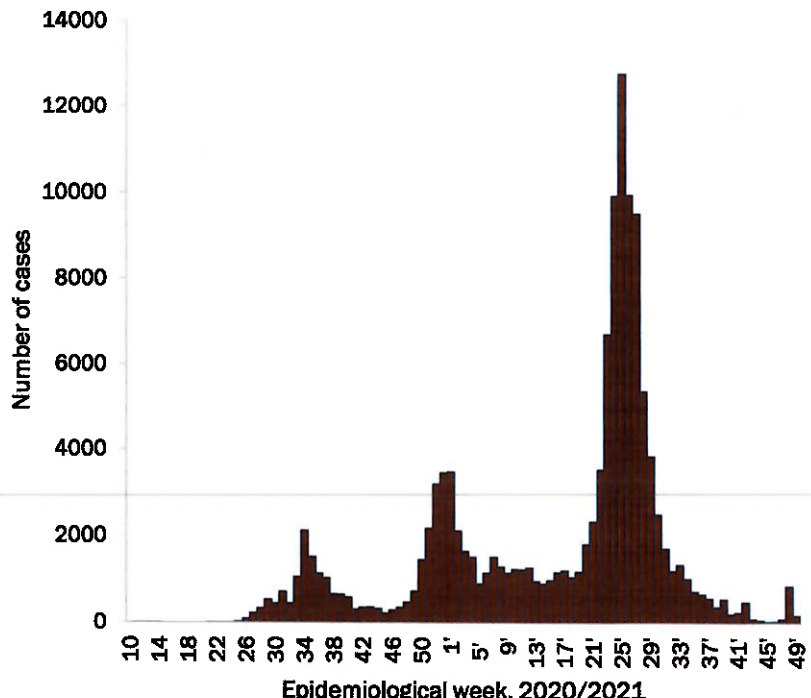


Figure 2: Epi-curve for confirmed COVID-19 cases, 05 December 2021

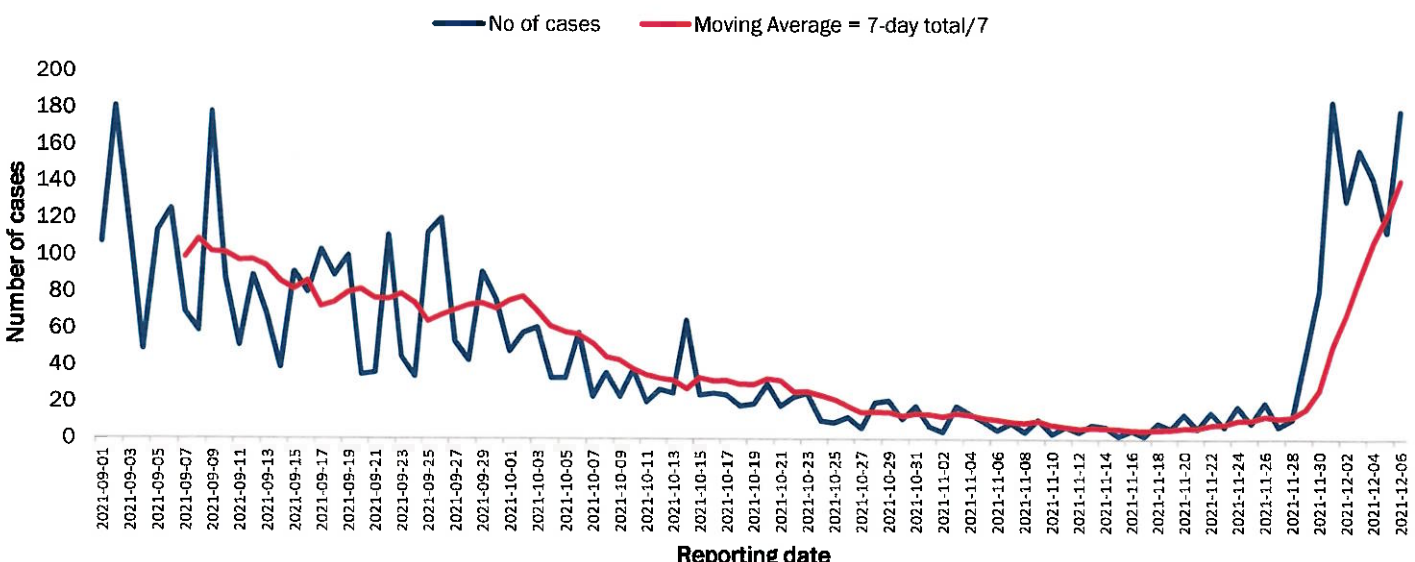


Figure 3: The 7 days moving average line chart for confirmed COVID-19 cases, 06 December 2021

Table 4: Number of people in quarantine 06 December 2021

Region	Newly quarantined 24 hours	Cumulative number	Number discharged	Number in quarantine now
Erongo	0	6 939	6 933	6
Hardap	0	3 241	3 241	0
Kavango (East and West)	0	1 673	1 673	0
Khomas	0	3 710	3 703	7
Kharas	0	10 000	9 919	81
Kunene	0	6 493	6 493	0
Ohangwena	0	880	880	0
Omaheke	5	17 736	17 695	41
Omusati	0	3 441	3 432	9
Oshana	0	400	400	0
Oshikoto	28	24 539	24 506	33
Otjozondjupa	0	1 932	1 880	52
Zambezi	0	2 032	2 029	3
<b>Total</b>	<b>33</b>	<b>83 016</b>	<b>82 784</b>	<b>232</b>

- Since March 2020, **83 016** people have been placed into quarantine around the country.
- A total of **232** people are currently in quarantine, with **33** new admissions.



**Table 5: Summary of COVID-19 vaccine doses administered, 06 December 2021**

Region	Cumulative no. of persons vaccinated with doses of Sinopharm, AstraZeneca, Sputnik V, Pfizer and Jassen & Johnson		Targeted Population	Vaccination Coverage (%)	Cumulative no. of Healthcare Workers vaccinated with doses of Sinopharm, AstraZeneca, Sputnik V, Pfizer and Jassen & Johnson	
	1 <sup>st</sup> doses	Fully vaccinated			1 <sup>st</sup> doses	Fully vaccinated
Erongo	37 328	32 681	121 682	27%	1 399	1 067
Hardap	22 781	19 317	56 741	34%	518	427
Kharas	17 712	15 689	55 489	28%	672	387
Kavango East	24 914	17 824	117 665	15%	1 187	942
Kavango West	17 353	14 433	29 228	48%	417	377
Khomas	90 920	77 932	286 641	27%	3 938	2 900
Kunene	23 722	19 099	66 499	28%	647	504
Ohangwena	25 673	21 502	164 102	13%	811	635
Omaheke	17 674	13 256	51 765	25%	373	269
Omusati	24 900	21 514	139 451	15%	956	748
Oshana	20 706	18 180	126 374	14%	1 514	1 255
Oshikoto	20 448	18 015	124 395	14%	855	734
Otjozondjupa	28 843	25 059	97 903	25%	861	622
Zambezi	7 163	6 405	63 106	10%	633	589
<b>Total</b>	<b>380 137</b>	<b>320 906</b>	<b>1 501 041</b>	<b>21%</b>	<b>14 781</b>	<b>11 456</b>

**PUBLIC HEALTH ACTION (S)**

- The COVID-19 vaccination programme is ongoing throughout the country.
- Public Health measures continue to be enforced as the situation is closely monitored.
- The government and development partners continue to prioritize the continuation of essential health services.

**CHALLENGES**

- Slow vaccine uptake among members of the public, and circulation of anti-vaccination information.

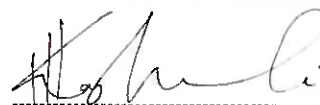
**RECOMMENDATIONS**

- Encourage the public to get vaccinated and strengthen community health awareness to counteract anti-vaccination information in circulation.

APPROVED



INCIDENT MANAGER  
06 DECEMBER 2021



SECRETARIAT

For enquiries, please contact  
Namibia Public Health Emergency Operations Centre;

 [PHEOC@mhss.gov.na](mailto:PHEOC@mhss.gov.na)

 0800 100 100

 0851 100 100