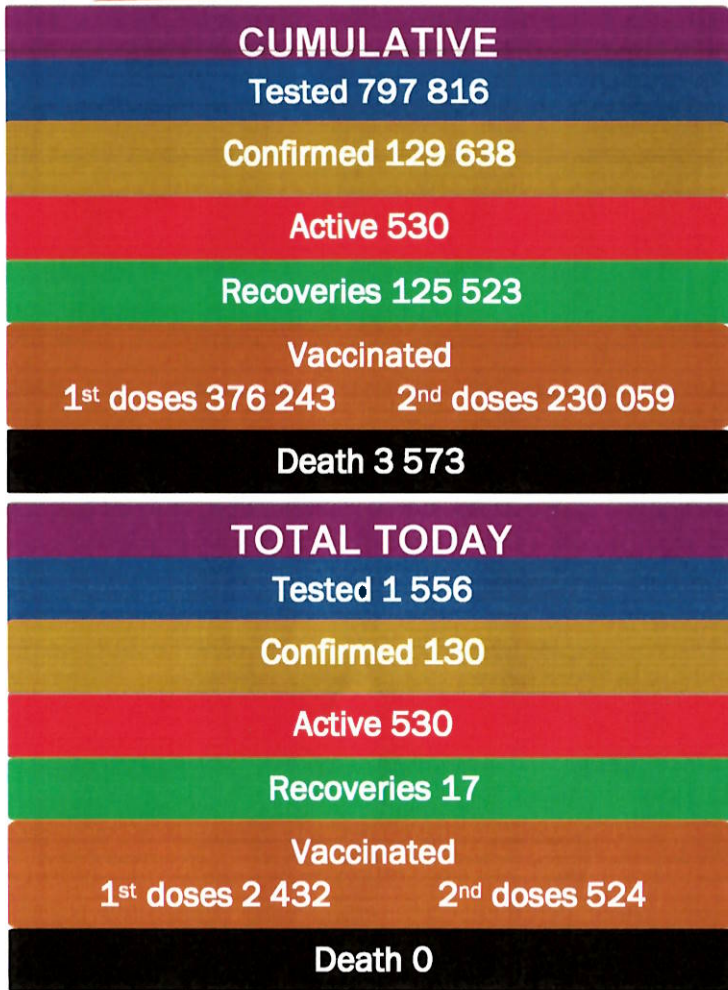




**NAMIBIA COVID-19 SITUATION REPORT NO. 624**

<b>Outbreak Name</b>	COVID-19 outbreak	<b>Country affected</b>	Namibia
<b>Date &amp; Time</b>	02.12.2021 20h00	<b>Investigation start Date</b>	13 March 2020
<b>Prepared by</b>	Surveillance Team		

**HIGHLIGHTS/SITUATION UPDATE (02/12/2021)**



- A total of **129 638** cases have been recorded to-date, representing **5%** of the total population (**2 550 226**).
- More female cases **68 968 (53%)** have been recorded.
- Of the total confirmed cases, **4 391 (3%)** are Health Workers, with no new confirmation today.
  - 3 665 (83%) State; 718 (16%) Private, 8 (0.2%) Non-Governmental Organizations.
  - 4 353 (99%) recoveries and 25 (0.6%) deaths.
- The recovery rate now stands at **97%**.
- Khomas and Erongo regions reported the highest number of cases with **42 240 (33%)** and **18 512 (14%)** respectively.
- Of the total fatalities, **3 276 (92%)** are COVID-19 deaths while **297 (8%)** are COVID-19 related deaths. The case fatality rate now stands at **2.8%**.

**Table 1: Distribution of confirmed COVID-19 cases by region, 02 December 2021**

Region	Total cases daily	Total No. of cases	Active cases	Recoveries	Cumulative Deaths	Cumulative deaths with co-morbidities	Non-COVID deaths	Health Workers
Erongo	12	18 512	38	18 058	411	341	5	418
Hardap	0	7 617	4	7 355	258	161	0	133
Kharas	3	7 920	32	7 736	152	130	0	243
Kavango East	1	5 524	2	5 314	207	122	1	246
Kavango West	0	645	0	626	19	16	0	38
Khomas	97	42 240	410	40 964	865	676	1	1 525
Kunene	0	3 746	2	3 620	124	89	0	97
Ohangwena	0	5 122	2	4 962	156	97	2	163
Omaheke	0	4 008	3	3 752	253	174	0	122
Omusati	2	5 808	3	5 574	231	139	0	181
Oshana	1	9 175	12	8 831	331	196	1	531
Oshikoto	1	6 770	4	6 589	175	140	2	319
Otjozondjupa	13	9 541	15	9 252	274	185	0	269
Zambezi	0	3 010	3	2 890	117	67	0	106
<b>Total</b>	<b>130</b>	<b>129 638</b>	<b>530</b>	<b>125 523</b>	<b>3 573</b>	<b>2 533</b>	<b>12</b>	<b>4 391</b>

- The highest peak of **12 787 (10%)** cases was recorded during week 25 of 2021 (Figure 1).
- After a peak in epi-week 25, the country has seen a gradual reduction in the average number of confirmed cases from 1 827 to 13 in epi-week 47.

- The National Call Center continues operations for 24 hours daily.
- Today (02/12/2021), **578** calls were answered.

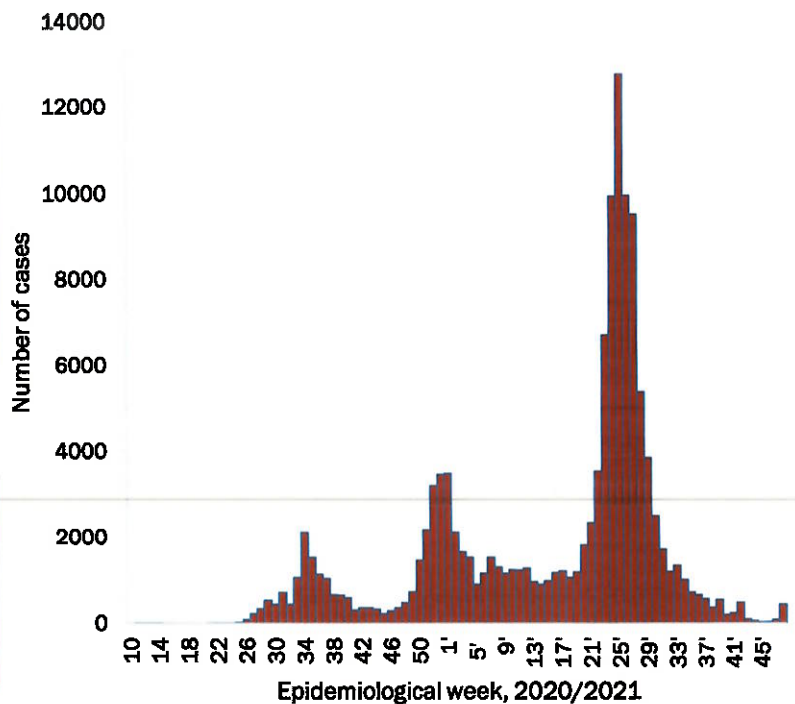


Figure 2: Epi-curve for confirmed COVID-19 cases, 02 December 2021

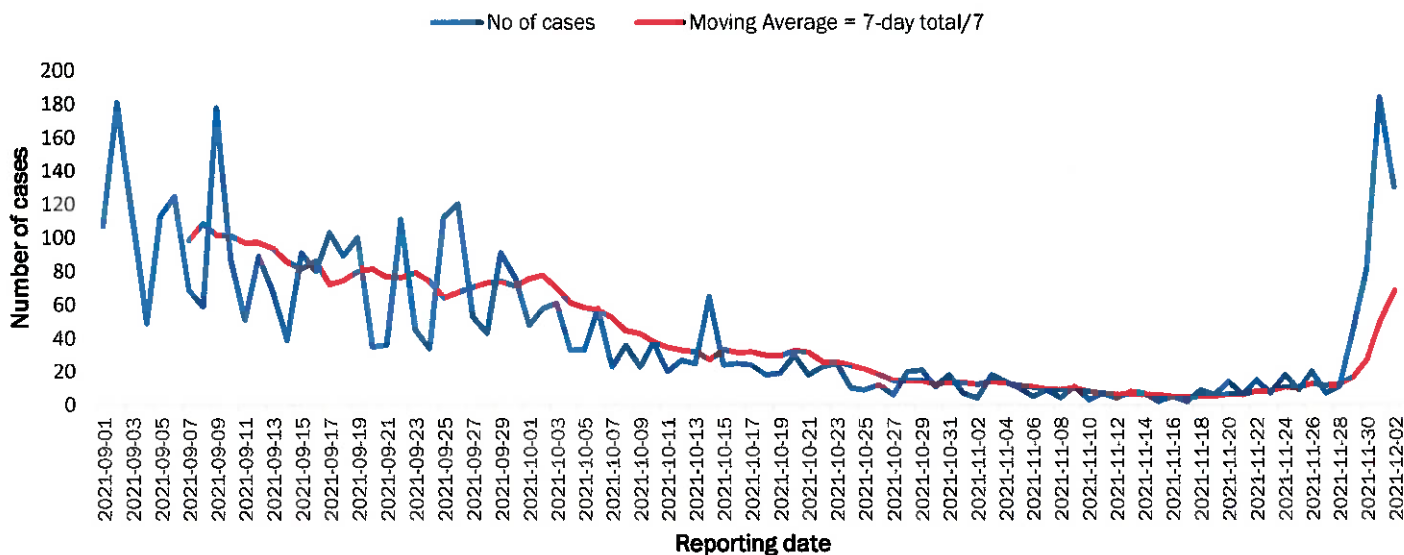


Figure 3: The 7 days moving average line chart for confirmed COVID-19 cases, 02 December 2021

Table 4: Number of people in quarantine 02 December 2021

Region	Newly quarantined 24 hours	Cumulative number	Number discharged	Number in quarantine now
Erongo	0	6 939	6 933	6
Hardap	0	3 241	3 241	0
Kavango (East and West)	0	1 673	1 673	0
Khomas	0	3 710	3 703	7
Kharas	0	10 000	9 919	81
Kunene	0	6 493	6 493	0
Ohangwena	0	880	880	0
Omaheke	63	17 721	17 615	106
Omusati	0	3 423	3 423	0
Oshana	0	400	400	0
Oshikoto	31	24 487	24 454	33
Otjozondjupa	56	1 905	1 880	25
Zambezi	0	2 032	2 029	3
<b>Total</b>	<b>150</b>	<b>82 904</b>	<b>82 643</b>	<b>261</b>

- Since March 2020, **82 904** people have been placed into quarantine around the country.
- A total of **261** people are currently in quarantine, with **150** new admissions.

- Of the total confirmed cases, **76 702 (59%)** are in the 20-49 years age-brackets which constitutes the majority of the recorded cases.
- A total of **21 704 (17%)** of the confirmed cases are among the 5-19 years category.
- A total of **15 284 (12%)** of the confirmed cases are among the 50 - 59 years group.
- The under 5 years age group make up **2 942 (2%)** of the total cases whereas, **13 026 (10%)** are above 60 years of age.

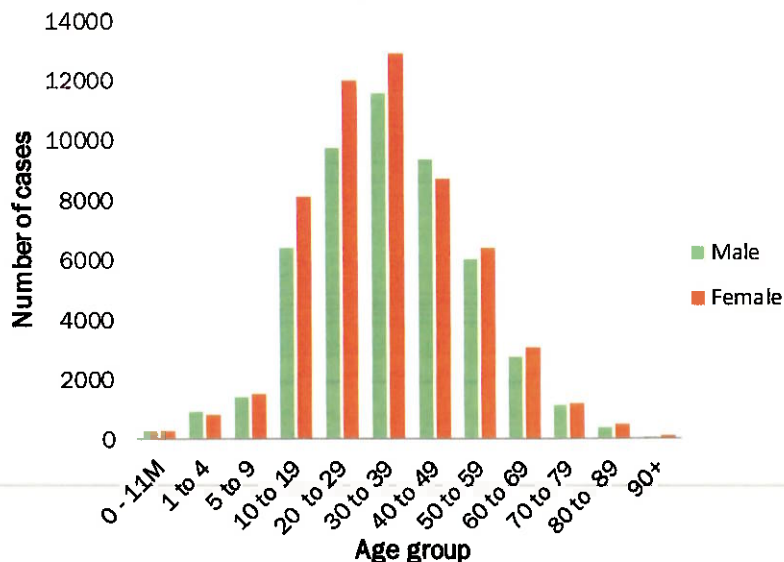


Figure 1: Age and Sex distribution of COVID-19 confirmed cases 02 December 2021

Table 2: The current distribution for hospitalization of confirmed cases by region, 02 December 2021

Region	Hospitalized confirmed cases	Intensive Care Unit
Erongo	1	0
Hardap	0	0
Kharas	3	0
Kavango East	1	0
Kavango West	0	0
Khomas	10	1
Kunene	0	0
Ohangwena	0	0
Omaheke	0	0
Omusati	0	0
Oshana	1	0
Oshikoto	1	0
Otjozondjupa	0	0
Zambezi	1	0
<b>Total</b>	<b>18</b>	<b>1</b>

Table 3: COVID-19 specimen recorded at the Laboratories 02 December 2021

VARIABLES	TOTAL
Total samples received by the Laboratory	797 978
Total samples tested	783 381
Total samples re-tested	14 435
Total positive results	129 638
Total negative results	653 786
Total samples discarded	117
Invalid results	0
Total pending results	0
Indeterminant/Inconclusive	2
Suspected cases in 24 hours (excluding re-tests)	1 541

- The laboratory testing capacity has been enhanced; with a total of sixteen (16) laboratories carrying out the testing of samples: NIP, Path-Care, UNAM Molecular, Central Veterinary Laboratory, Namib Poultry, NAMDEB, NamPath, Namibia Central Pathology, DiagnoLab, High Care, Alpha Medical Laboratory, Des-Jo Medical Test Centre, ProQuest Diagnostic Laboratory, MAXI, Medlink Laboratory Services and Biotech Medical.
- To date, **797 816** tests (including **14 435** re-tests) have been conducted by authorized laboratories.
- Since the beginning of the outbreak, **147 518** contacts of confirmed cases have been identified, **28** new contacts were identified within the last 24 hours from 11 regions.
- Cumulatively, **145 532** contacts have completed their monitoring period, while **290** contacts are lost to follow-up and a total of **25 438 (20%)** contacts of confirmed cases have tested positive.
- Today, **125 (48%)** out of **264** active contacts were monitored.

**Table 5: Summary of COVID-19 vaccine doses administered, 02 December 2021**

Region	Cumulative no. of persons vaccinated with doses of Sinopharm, AstraZeneca, Sputnik V, Pfizer and Jassen & Johnson		Targeted Population	Vaccination Coverage (%)	Cumulative no. of Healthcare Workers vaccinated with doses of Sinopharm, AstraZeneca, Sputnik V, Pfizer and Jassen & Johnson	
	1 <sup>st</sup> doses	Fully vaccinated			1 <sup>st</sup> doses	Fully vaccinated
Erongo	36 783	32 272	121 682	26%	1 360	1 029
Hardap	22 538	19 058	56 741	33%	517	425
Karas	17 537	15 511	55 489	27%	672	387
Kavango East	24 638	17 519	117 665	15%	1 187	942
Kavango West	16 784	13 886	29 228	44%	417	377
Khomas	90 426	77 522	286 641	27%	3 936	2 898
Kunene	23 476	18 874	66 499	27%	647	504
Ohangwena	25 356	21 102	164 102	12%	811	635
Omaheke	17 518	13 098	51 765	24%	373	269
Omusati	24 670	21 254	139 451	15%	956	748
Oshana	20 584	18 079	126 374	14%	1 506	1 247
Oshikoto	20 260	17 817	124 395	14%	855	734
Otjozondjupa	28 599	24 821	97 903	25%	852	622
Zambezi	7 074	6 319	63 106	10%	629	584
<b>Total</b>	<b>376 243</b>	<b>317 132</b>	<b>1 501 041</b>	<b>21%</b>	<b>14718</b>	<b>11 401</b>

**PUBLIC HEALTH ACTION (S)**

- The COVID-19 vaccination programme is ongoing throughout the country.
- Public Health measures continue to be enforced as the situation is closely monitored.
- The government and development partners continue to prioritize the continuation of essential health services.

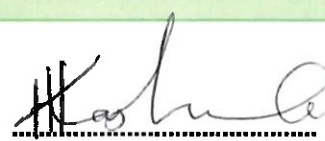
**CHALLENGES**

- Slow vaccine uptake among members of the public, and circulation of anti-vaccination information.

**RECOMMENDATIONS**

- Encourage the public to get vaccinated and strengthen community health awareness to counteract anti-vaccination information in circulation.

APPROVED  
  
 INCIDENT MANAGER  
 02 DECEMBER 2021

  
 SECRETARIAT

For enquiries, please contact  
**Namibia Public Health Emergency Operations Centre;**

 [PHEOC@mhss.gov.na](mailto:PHEOC@mhss.gov.na)

 0800 100 100

 0851 100 100