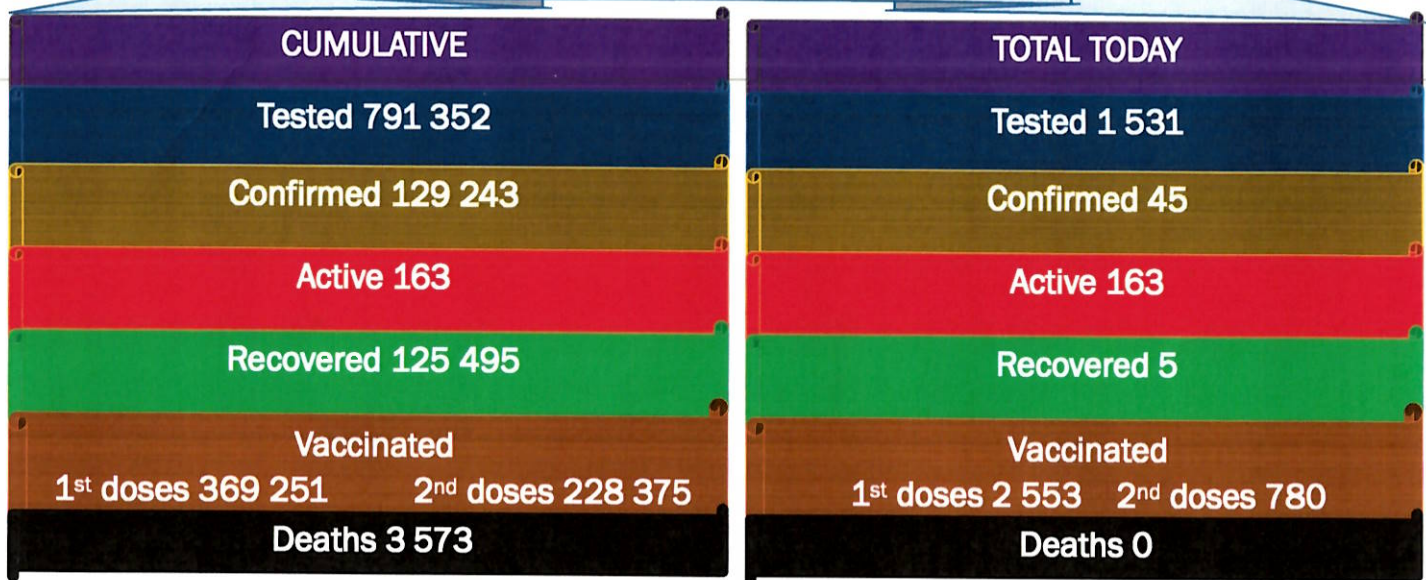




NAMIBIA COVID-19 SITUATION REPORT NO. 621

Outbreak Name	COVID-19 outbreak	Country affected	Namibia
Date & Time	29.11. 2021 17h00	Investigation start Date	13 March 2020
Prepared by	Surveillance Team		

HIGHLIGHTS/SITUATION UPDATE (29/11/2021)



- A total of **129 243** cases have been recorded to-date, representing **5%** of the total population (**2 550 226**).
- More female cases **68 760 (53%)** have been recorded.
- Of the total confirmed cases, **4 364 (3%)** are Health Workers, with no new confirmation today.
 - 3 643 (83%) State; 713 (16%) Private, 8 (0.2%) Non-Governmental Organizations.
 - 4 353 (99%) recoveries and 25 (0.6%) deaths.
- The recovery rate now stands at **97%**.
- Khomas and Erongo regions reported the highest number of cases with **41 937 (32%)** and **18 482 (14%)** respectively.
- Of the total fatalities, **3 276 (92%)** are COVID-19 deaths while **297 (8%)** are COVID-19 related deaths. The case fatality rate now stands at **2.8%**.

Table 1: Distribution of confirmed COVID-19 cases by region, 29 November 2021

Region	Total cases daily	Total No. of cases	Active cases	Recoveries	Cumulative Deaths	Cumulative deaths with co-morbidities	Non-COVID deaths	Health Workers
Erongo	0	18 482	8	18 058	411	341	5	418
Hardap	0	7 617	4	7 355	258	161	0	133
Kharas	5	7 899	14	7 733	152	130	0	242
Kavango East	0	5 523	1	5 314	207	122	1	246
Kavango West	0	645	0	626	19	16	0	38
Khomas	39	41 937	120	40 951	865	676	1	1 503
Kunene	1	3 746	3	3 619	124	89	0	97
Ohangwena	0	5 122	2	4 962	156	97	2	163
Omaheke	0	4 006	1	3 752	253	174	0	122
Omusati	0	5 806	1	5 574	231	139	0	181
Oshana	0	9 165	2	8 831	331	196	1	529
Oshikoto	0	6 766	0	6 589	175	140	2	319
Otjozondjupa	0	9 521	6	9 241	274	185	0	267
Zambezi	0	3 008	1	2 890	117	67	0	106
Total	45	129 243	163	125 495	3 573	2 533	12	4 364

EPIDEMIOLOGICAL SITUATION IN NAMIBIA

Table 2: The current distribution for hospitalization of confirmed cases by region, 29 November 2021

Region	Hospitalized confirmed cases	Intensive Care Unit
Erongo	1	0
Hardap	1	0
Karas	2	0
Kavango East	1	0
Kavango West	0	0
Khomas	3	1
Kunene	0	0
Ohangwena	2	0
Omaheke	0	0
Omusati	0	0
Oshana	1	0
Oshikoto	1	0
Otjozondjupa	0	0
Zambezi	0	0
Total	12	1

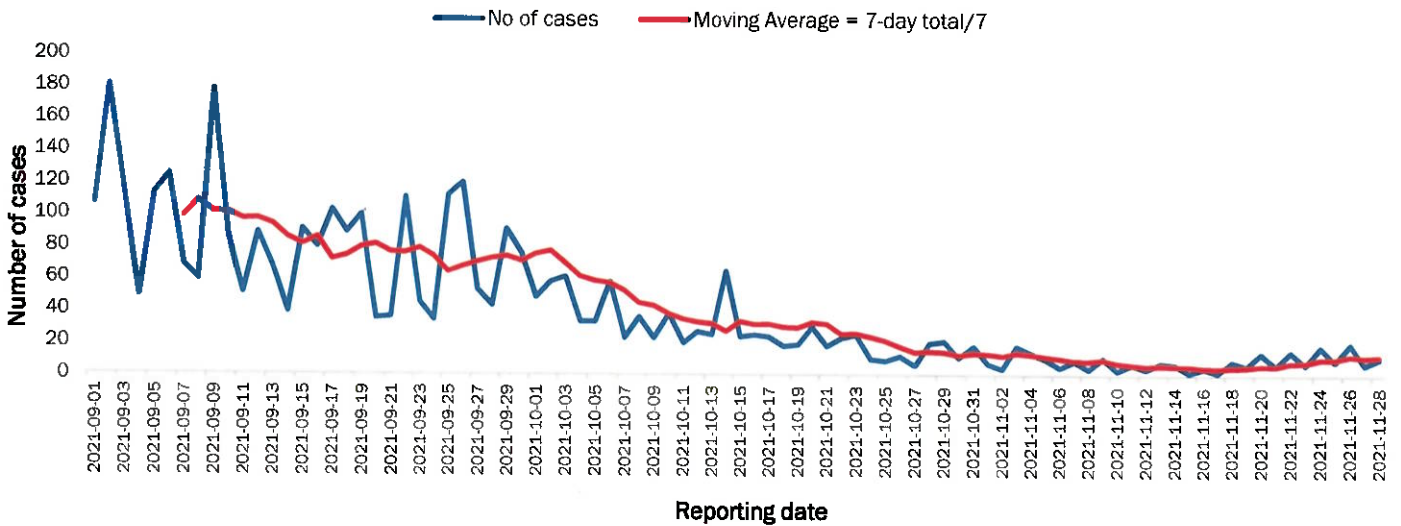


Figure 1: The 7 days moving average line chart for confirmed COVID-19 cases, 29 November 2021

- The highest peak of **12 787 (10%)** cases was recorded during week 25 of 2021 (Figure 1).
- After a peak in epi-week 25, the country has seen a gradual reduction in the average number of confirmed cases from 1 827 to 6 in epi-week 46.
- The number of cases have plateaued in the last twelve (12) weeks as seen in the graph.

- The National Call Center continues operations for 24 hours daily.
- Today (29/11/2021), **480** calls were answered.

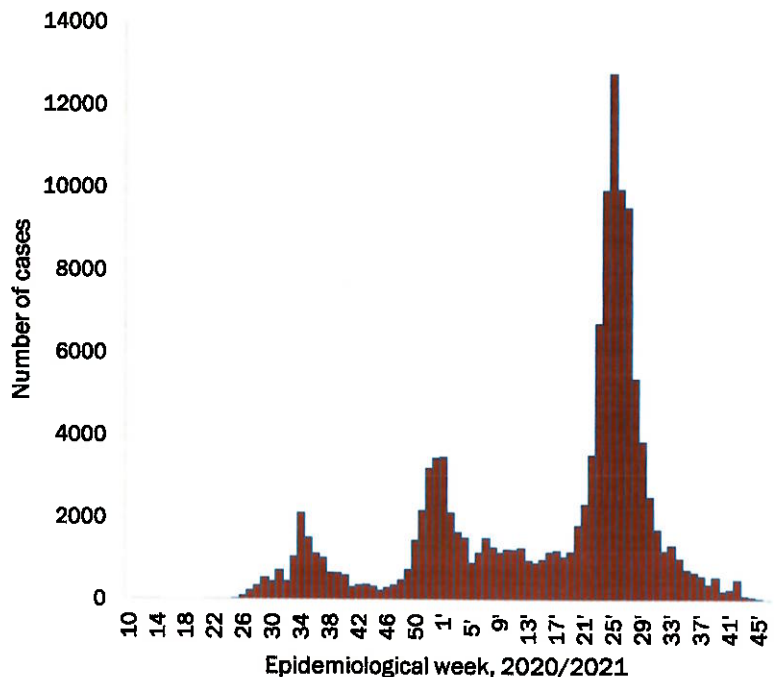


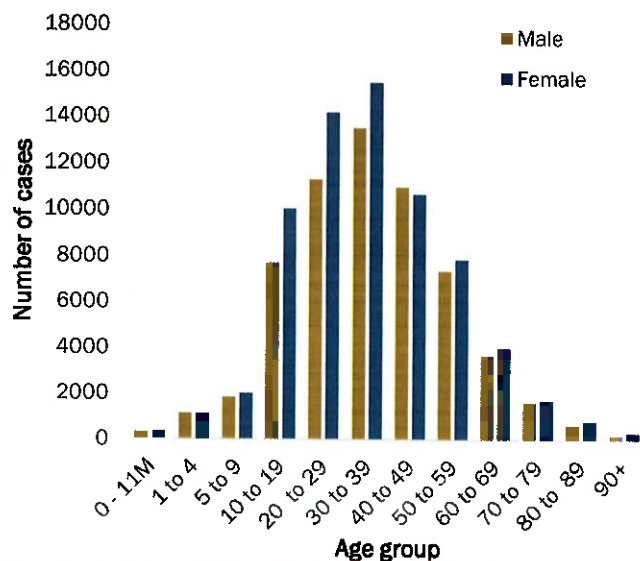
Figure 2: Epi-curve for confirmed COVID-19 cases, 29 November 2021

**Table 3: COVID-19 specimen recorded at the Laboratories
29 November 2021**

VARIABLES	TOTAL
Total samples received by the Laboratory	791 469
Total samples tested	776 949
Total samples re-tested	14 403
Total positive results	129 243
Total negative results	647 704
Total samples discarded	117
Invalid results	0
Total pending results	0
Indeterminant/Inconclusive	2
Suspected cases in 24 hours (excluding re-tests)	1 528

- The laboratory testing capacity has been enhanced; with a total of sixteen (16) laboratories carrying out the testing of samples: NIP, Path-Care, UNAM Molecular, Central Veterinary Laboratory, Namib Poultry, NAMDEB, NamPath, Namibia Central Pathology, DiagnoLab, High Care, Alpha Medical Laboratory, Des-Jo Medical Test Centre, ProQuest Diagnostic Laboratory, MAXI, Medlink Laboratory Services and Biotech Medical.
- To date, **789 822** tests (including **14 400** re-tests) have been conducted by authorized laboratories.
- Since the beginning of the outbreak, **147 385** contacts of confirmed cases have been identified, **74** new contacts were identified within the last 24 hours from 12 regions.
- Cumulatively, **145 500** contacts have completed their monitoring period, while **290** contacts are lost to follow-up and a total of **25 434 (20%)** contacts of confirmed cases have tested positive.
- Today, **64 (34%)** out of **189** active contacts were monitored.

- Of the total confirmed cases, **76 338 (59%)** are in the 20-49 years age-brackets which constitutes the majority of the recorded cases.
- A total of **21 682 (17%)** of the confirmed cases are among the 5-19 years category.
- A total of **15 267 (12%)** of the confirmed cases are among the 50 - 59 years group.
- The under 5 years age group make up **2 938 (2%)** of the total cases whereas, **13 018 (10%)** are above 60 years of age.



**Table 4: Number of people in quarantine
29 November 2021**

Region	Newly quarantined 24 hours	Cumulative number	Number discharged	Number in quarantine now
Erongo	0	6 939	6 933	6
Hardap	0	3 241	3 241	0
Kavango (East and West)	0	1 673	1 673	0
Khomas	0	3 703	3 703	0
Kharas	0	9 980	9 919	61
Kunene	0	6 493	6 493	0
Ohangwena	0	880	880	0
Omaheke	0	17 658	17 615	43
Omusati	1	3 423	3 422	1
Oshana	0	400	400	0
Oshikoto	31	24 417	24 385	32
Otjozondjupa	0	1 849	1 834	15
Zambezi	0	2 032	2 029	3
Total	32	82 688	82 527	161

**Figure 3: Age and Sex distribution of COVID-19 confirmed cases
29 November 2021**

- Since March 2020, **82 688** people have been placed into quarantine around the country.
- A total of **161** people are currently in quarantine, with **32** new admissions.

Table 5: Summary of COVID-19 vaccine doses administered, 29 November 2021

Region	Cumulative no. of persons vaccinated with doses of Sinopharm, AstraZeneca, Sputnik V, Pfizer and Jassen & Johnson		Targeted Population	Vaccination Coverage (%)	Cumulative no. of Healthcare Workers vaccinated with doses of Sinopharm, AstraZeneca, Sputnik V, Pfizer and Jassen & Johnson	
	1 st doses	Fully vaccinated			1 st doses	Fully vaccinated
Erongo	35 872	31 423	121 682	26%	1 351	1 023
Hardap	22 180	18 668	56 741	33%	515	423
Karas	17 276	15 238	55 489	27%	671	387
Kavango East	24 449	17 329	117 665	15%	1 187	942
Kavango West	15 882	13 080	29 228	44%	416	376
Khomas	89 108	76 423	286 641	27%	3 892	2 863
Kunene	23 144	18 490	66 499	27%	647	504
Ohangwena	24 749	20 495	164 102	12%	808	632
Omaheke	17 170	12 707	51 765	24%	373	269
Omusati	24 110	20 716	139 451	15%	946	742
Oshana	20 227	17 731	126 374	14%	1 487	1 237
Oshikoto	20 073	17 643	124 395	14%	854	734
Otjozondjupa	28 051	24 348	97 903	25%	851	624
Zambezi	6 960	6 196	63 106	10%	623	574
Total	369 251	310 487	1 501 041	21%	14 621	11 330

PUBLIC HEALTH ACTION (S)

- The COVID-19 vaccination programme is ongoing throughout the country.
- Public Health measures continue to be enforced as the situation is closely monitored.
- The government and development partners continue to prioritize the continuation of essential health services.

CHALLENGES

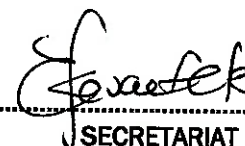
- Slow vaccine uptake among members of the public, and circulation of anti-vaccination information.

RECOMMENDATIONS

- Encourage the public to get vaccinated and strengthen community health awareness to counteract anti-vaccination information in circulation.

APPROVED



INCIDENT MANAGER
29 NOVEMBER 2021


SECRETARIAT

For enquiries, please contact

Namibia Public Health Emergency Operations Centre;

 PHIEOC@mhss.gov.na

 0800 100 100

 0851 100 100