



NAMIBIA COVID-19 SITUATION REPORT NO. 595

Outbreak Name	COVID-19 outbreak	Country affected	Namibia
Date & Time	03.11.2021 17h00	Investigation start Date	13 March 2020
Prepared by	Surveillance Team		

HIGHLIGHTS/SITUATION UPDATE (03/11/2021)

Tested 757 005	Tested 1 762
Confirmed 128 985	Confirmed 18
Active 369	Active 369
Recoveries 125 044	Recoveries 106
Vaccinated 1 st doses 336 726 2 nd doses 211 533	Vaccinated 1 st doses 1 728 2 nd doses 913
Deaths 3 560	Deaths 2

- A total of **128 985** cases have been recorded to-date, representing **5%** of the total population (**2 550 226**).
- More female cases **68 623 (53%)** have been recorded.
- Of the total confirmed cases, **4 354 (3%)** are Health Workers, with no new confirmation today.
 - 3 635 (83%) State; 711 (16%) Private, 8 (0.2%) Non-Governmental Organizations.
 - 4 350 (99%) recoveries and 25 (0.6%) deaths.
- The recovery rate now stands at **97%**.
- Khomas and Erongo regions reported the highest number of cases with **41 816 (32%)** and **18 461 (14%)** respectively.
- Of the total fatalities, **3 267 (92%)** are COVID-19 deaths while **293 (8%)** are COVID-19 related deaths. The case fatality rate now stands at **2.8%**.

Table 1: Distribution of confirmed COVID-19 cases by region, 03 November 2021

Region	Total cases daily	Total No. of cases	Active cases	Recoveries	Cumulative Deaths	Cumulative deaths with co-morbidities	Non-COVID deaths	Health Workers
Erongo	3	18 461	15	18 030	411	341	5	417
Hardap	2	7 610	6	7 346	258	161	0	133
Karas	0	7 874	3	7 720	151	129	0	242
Kavango East	0	5 518	2	5 313	202	122	1	246
Kavango West	0	645	1	625	19	16	0	38
Khomas	6	41 816	223	40 728	864	676	1	1 497
Kunene	1	3 736	1	3 613	122	89	0	97
Ohangwena	4	5 120	69	4 893	156	97	2	163
Omaheke	0	4 005	1	3 752	252	173	0	122
Omusati	1	5 784	12	5 542	230	139	0	181
Oshana	1	9 150	10	8 809	330	196	1	528
Oshikoto	0	6 761	22	6 562	175	140	2	319
Otjozondjupa	0	9 502	3	9 226	273	185	0	265
Zambezi	0	3 003	1	2 885	117	67	0	106
Total	18	128 985	369	125 044	3 560	2 531	12	4 354

EPIDEMIOLOGICAL SITUATION IN NAMIBIA

Table 2: The current distribution for hospitalization of confirmed cases by region, 03 November 2021

Region	Hospitalized confirmed cases	Intensive Care Unit
Erongo	0	0
Hardap	0	0
Kharas	1	0
Kavango East	0	0
Kavango West	0	0
Khomas	1	0
Kunene	0	0
Ohangwena	2	0
Omaheke	0	0
Omusati	0	0
Oshana	0	0
Oshikoto	2	0
Otjozondjupa	0	0
Zambezi	0	0
Total	6	0

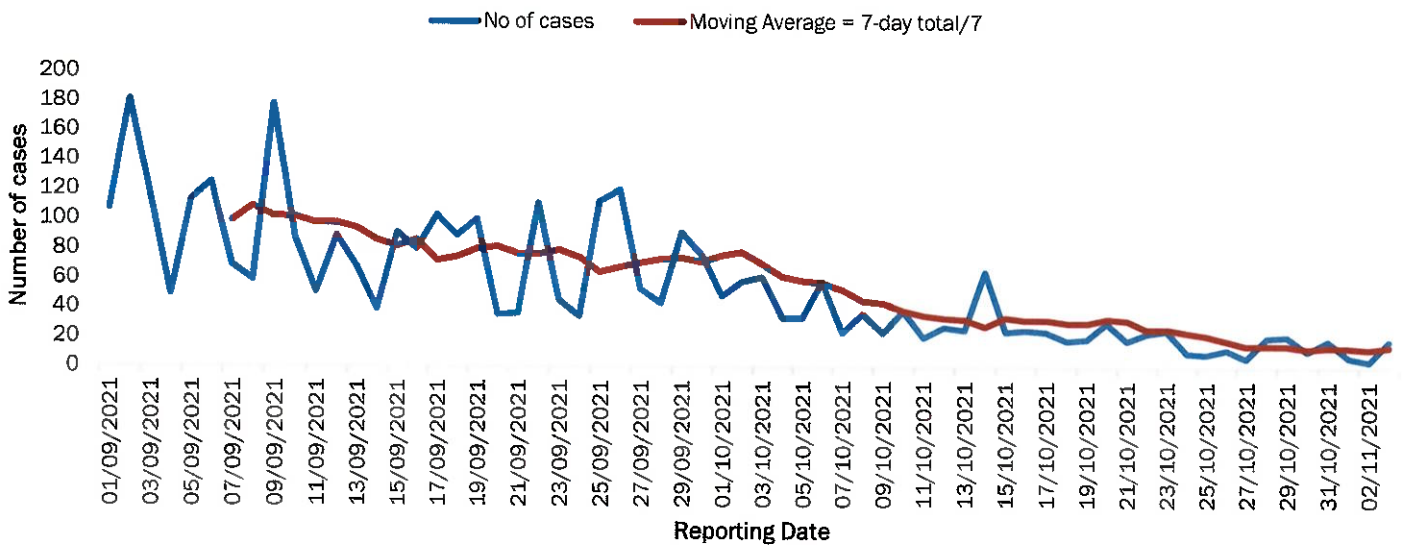


Figure 1: The 7 days moving average line chart for confirmed COVID-19 cases, 03 November 2021

- The highest peak of **12 787 (10%)** cases was recorded during week 25 of 2021 (Figure 1).
- After a peak in epi-week 25, the country has seen a gradual reduction in the average number of confirmed cases from 1 598 to 14 in epi-week 43.
- The number of cases have plateaued in the last nine (9) weeks as seen in the graph.

- The National Call Center continues operations for 24 hours daily.
- Today (03/11/2021), **322** calls were answered.

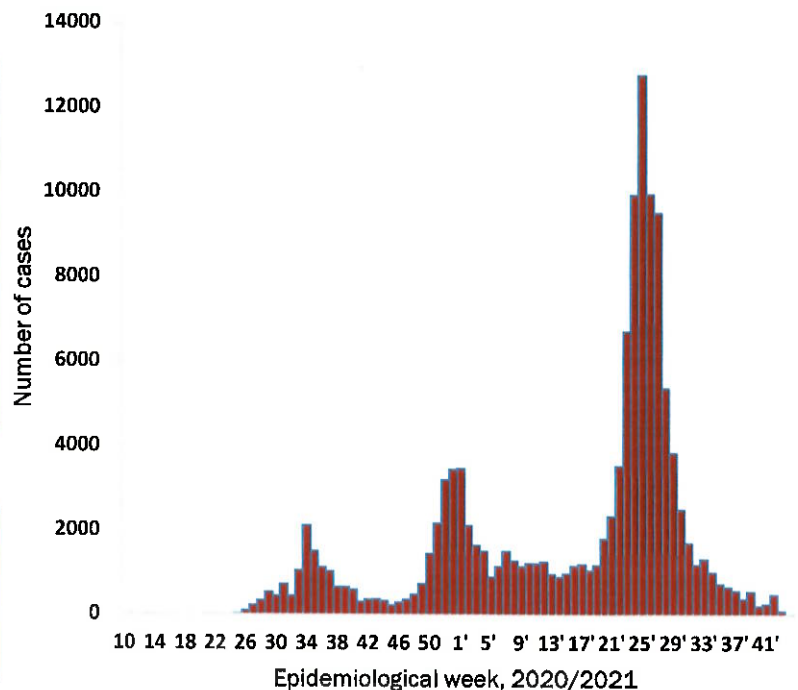


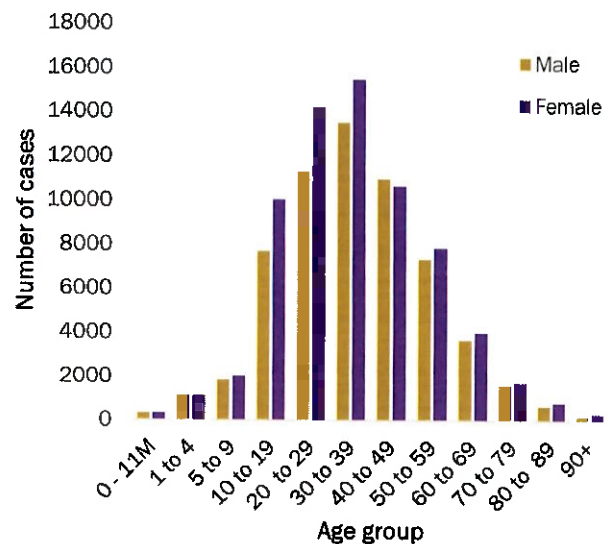
Figure 2: Epi-curve for confirmed COVID-19 cases, 03 November 2021

**Table 3: COVID-19 specimen recorded at the Laboratories
03 November 2021**

VARIABLES	TOTAL
Total samples received by the Laboratory	757 124
Total samples tested	742 652
Total samples re-tested	14 355
Total positive results	128 985
Total negative results	613 667
Total samples discarded	117
Invalid results	0
Total pending results	0
Indeterminant/Inconclusive	0
Suspected cases in 24 hours (excluding re-tests)	1 757

- The laboratory testing capacity has been enhanced; with a total of fifteen (15) laboratories carrying out the testing of samples: NIP, Path-Care, UNAM Molecular, Central Veterinary Laboratory, Namib Poultry, NAMDEB, NamPath, Namibia Central Pathology, DiagnoLab, High Care, Alpha Medical Laboratory, Des-Jo Medical Test Centre, ProQuest Diagnostic Laboratory, MAXI and Medlink Laboratory Services.
- To date, **757 005** tests (including **14 355** re-tests) have been conducted by authorized laboratories.
- Since the beginning of the outbreak, **146 689** contacts of confirmed cases have been identified, **10** new contacts were identified within the last 24 hours from 4 regions.
- Cumulatively, **144 539** contacts have completed their monitoring period, while **290** contacts are lost to follow-up and a total of **25 401 (20%)** contacts of confirmed cases have tested positive.
- Today, **195 (42%)** out of **461** active contacts were monitored.

- Of the total confirmed cases, **76 184 (59%)** are in the 20-49 years age-brackets which constitutes the majority of the recorded cases.
- A total of **21 634 (17%)** of the confirmed cases are among the 5-19 years category.
- A total of **15 242 (12%)** of the confirmed cases are among the 50 - 59 years group.
- The under 5 years age group make up **2 930 (2%)** of the total cases whereas, **12 995 (10%)** are above 60 years of age.



**Table 4: Number of people in quarantine
03 November 2021**

**Figure 3: Age and Sex distribution of COVID-19 confirmed cases
03 November 2021**

Region	Newly quarantined 24 hours	Cumulative number	Number discharged	Number in quarantine now
Erongo	0	6 931	6 931	0
Hardap	6	3 223	3 215	8
Kavango (East and West)	0	1 673	1 673	0
Khomas	2	3 703	3 700	3
Kharas	0	9 909	9 899	10
Kunene	0	6 493	6 463	30
Ohangwena	0	880	780	100
Omaheke	97	17 349	17 151	198
Omusati	0	3 391	3 383	8
Oshana	0	400	400	0
Oshikoto	49	24 038	24 008	30
Otjozondjupa	0	1 834	1 833	1
Zambezi	0	2 026	2 026	0
Total	154	81 850	81 462	388

- Since March 2020, **81 850** people have been placed into quarantine around the country.
- A total of **388** people are currently in quarantine, with **154** new admissions.

Table 5: Summary of COVID-19 vaccine doses administered, 03 November 2021

Region	Cumulative no. of persons vaccinated with doses of Sinopharm, AstraZeneca, Sputnik V, Pfizer and Jassen & Johnson		Targeted Population	Vaccination Coverage (%)	Cumulative no. of Healthcare Workers vaccinated with doses of Sinopharm, AstraZeneca, Sputnik V, Pfizer and Jassen & Johnson	
	1 st doses	Fully vaccinated			1 st doses	Fully vaccinated
Erongo	33 344	28 270	121 682	23%	1 198	863
Hardap	20 268	16 296	56 741	28%	493	406
Kharas	15 309	12 843	55 489	23%	651	369
Kavango East	20 301	13 757	117 665	12%	1 102	832
Kavango West	12 907	10 507	29 228	35%	399	345
Khomas	84 434	69 482	286 641	24%	3 794	2 737
Kunene	20 599	15 255	66 499	23%	641	486
Ohangwena	22 613	17 689	164 102	11%	779	602
Omaheke	15 613	10 864	51 765	21%	369	258
Omusati	22 333	18 061	139 451	13%	911	698
Oshana	18 747	15 641	126 374	12%	1 432	1 156
Oshikoto	18 645	15 530	124 395	12%	833	706
Otjozondjupa	25 578	21 299	97 903	22%	806	579
Zambezi	6 035	5 147	63 106	8%	570	521
Total	336 726	270 641	1 501 041	18%	13 978	10 558

PUBLIC HEALTH ACTION (S)

- The COVID-19 vaccination programme is ongoing throughout the country.
- Public Health measures continue to be enforced as the situation is closely monitored.
- The government and development partners continue to prioritize the continuation of essential health services.

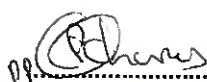
CHALLENGES

- Slow vaccine uptake among members of the public, and circulation of anti-vaccination information.

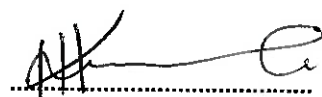
RECOMMENDATIONS

- Encourage the public to get vaccinated and strengthen community health awareness to encounter anti-vaccination information in circulation.




APPROVED



INCIDENT MANAGER
03 NOVEMBER 2021



SECRETARIAT

For enquiries, please contact
Namibia Public Health Emergency Operations Centre;
 PHEOC@mhss.gov.na
 0800 100 100
 0851 100 100