



NAMIBIA COVID-19 SITUATION REPORT NO. 528

Outbreak Name	COVID-19 outbreak	Country affected	Namibia
Date & Time	28 August 2021 20h00	Investigation start Date	13 March 2020
Prepared by	Surveillance Team		

HIGHLIGHTS/SITUATION UPDATE (28/08/2021)

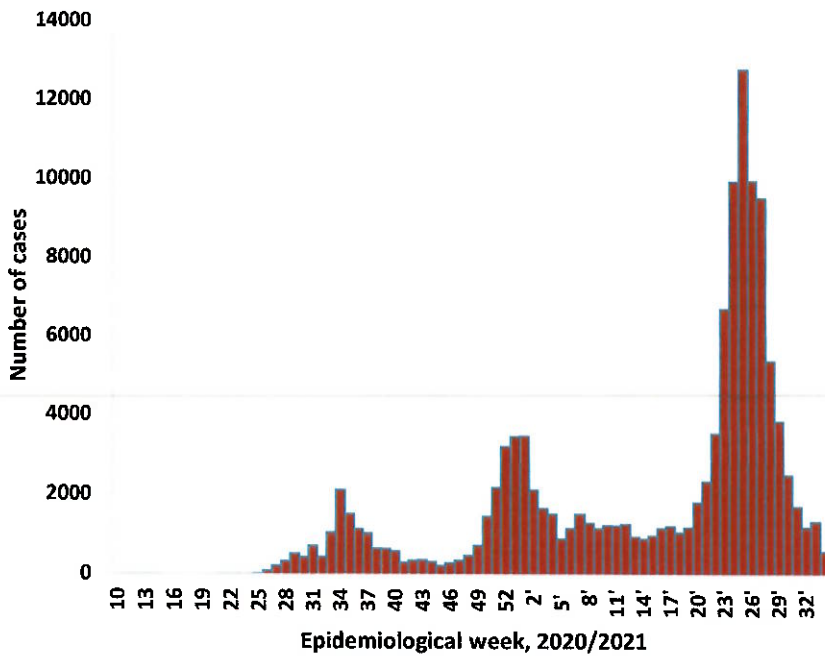
CUMULATIVE		CUMULATIVE	
Tested 658 390		Tested 1 345	
Confirmed 124 900		Confirmed 184	
Active 2 678		Active 2 678	
Recoveries 118 839		Recoveries 26	
Vaccinated		Vaccinated	
1 st doses 211 118	2 nd doses 111 523	1 st doses 279	2 nd doses 493
Deaths 3 372		Deaths 0	

- A total of **124 900** cases have been recorded to-date, representing **5%** of the total population (**2 550 226**).
- More female cases **66 264 (53%)** have been recorded.
- Of the total confirmed cases, **4 261 (3%)** are Health Workers.
 - 3 544 (83%) State; 709 (17%) Private, 8 (0.2%) Non-Governmental Organizations.
 - 4 157 (98%) recoveries and 25 (0.6%) deaths.
- The recovery rate now stands at **95%**.
- Khomas and Erongo regions reported the highest number of cases with **41 340 (33%)** and **18 114 (15%)** respectively.
- Of the total fatalities, **3 094 (92%)** are COVID-19 deaths while **278 (8%)** are COVID-19 related deaths. The case fatality rate now stands at **2.7%**.

Table 1: Distribution of confirmed COVID-19 cases by region, 28 August 2021

Region	Total cases daily	Total No. of cases	Active cases	Recoveries	Cumulative Deaths	Cumulative deaths with co-morbidities	Non-COVID deaths	Health Workers
Erongo	14	18 114	878	16 828	403	336	5	415
Hardap	2	7 390	40	7 094	256	160	0	123
Karas	5	7 659	200	7 318	141	124	0	233
Kavango East	0	5 423	20	5 226	177	114	0	244
Kavango West	2	595	23	554	18	15	0	38
Khomas	13	41 340	307	40 188	844	659	1	1 483
Kunene	7	3 461	36	3 334	91	73	0	92
Ohangwena	37	4 306	459	3 714	131	84	2	146
Omaheke	62	3 918	206	3 463	249	172	0	120
Omusati	10	5 227	294	4 726	207	125	0	172
Oshana	6	8 818	114	8 383	320	191	1	519
Oshikoto	3	6 537	26	6 347	162	129	2	314
Otjozondjupa	23	9 220	53	8 897	270	185	0	257
Zambezi	0	2 892	22	2 767	103	59	0	105
Total	184	124 900	2 678	118 839	3 372	2 426	11	4 261

EPIDEMIOLOGICAL SITUATION IN NAMIBIA



➤ The highest peak of **12 787 (10%)** cases was recorded during week 25 of 2021 (Figure 1).

➤ The National Call Center continues operations for 24 hours daily.
 ➤ Today (28/08/2021), **504** calls were answered including **5** alerts.

Figure 1: Epi-curve for confirmed COVID-19 cases, 28 August 2021

Table 2: The current distribution for hospitalization of confirmed cases by region, 28 August 2021

Region	Hospitalized confirmed cases	Intensive Care Unit
Erongo	23	9
Hardap	2	0
Kharas	8	0
Kavango East	4	1
Kavango West	0	0
Khomas	46	12
Kunene	13	0
Ohangwena	16	0
Omaheke	5	0
Omusati	22	0
Oshana	19	2
Oshikoto	12	3
Otjozondjupa	7	0
Zambezi	0	0
Total	177	27

- Of the total confirmed cases, **74 555 (60%)** are in the 20-49 years age-brackets which constitutes the majority of the recorded cases.
- A total of **20 278 (16%)** of the confirmed cases are among the 5-19 years category.
- A total of **14 878 (12%)** of the confirmed cases are among the 50 - 59 years group.
- The under 5 years age group make up **2 786 (2%)** of the total cases whereas, **12 403 (10%)** are above 60 years of age.

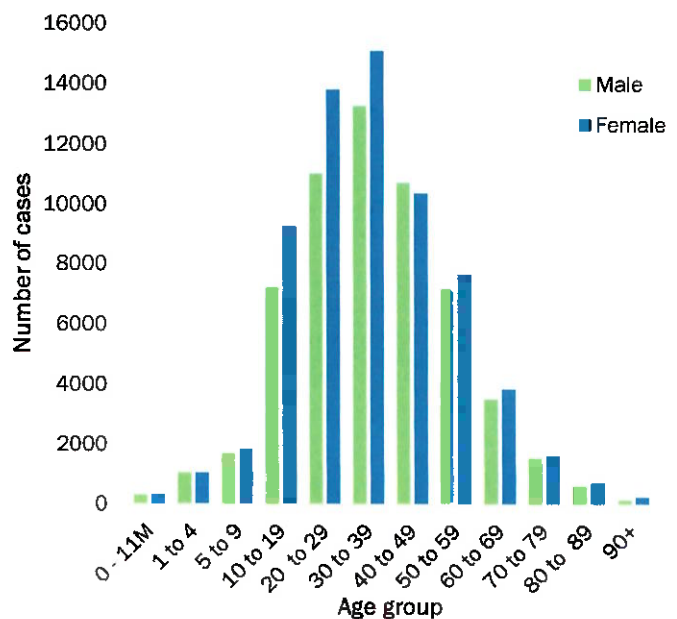


Figure 2: Age and Sex distribution of COVID-19 confirmed cases 28 August 2021

**Table 3: COVID-19 specimen recorded at the Laboratories
28 August 2021**

VARIABLES	TOTAL
Total samples received by the Laboratory	658 507
Total samples tested	644 264
Total samples re-tested	14 126
Total positive results	124 900
Total negative results	519 352
Total samples discarded	117
Invalid results	0
Total pending results	7
Indeterminant/Inconclusive	5
Suspected cases in 24 hours (excluding re-tests)	1 338

- The laboratory testing capacity has been enhanced; with a total of fifteen (15) laboratories carrying out the testing of samples: NIP, Path-Care, UNAM Molecular, Central Veterinary Laboratory, Namib Poultry, NAMDEB, NamPath, Namibia Central Pathology, DiagnoLab, High Care, Alpha Medical Laboratory, Des-Jo Medical Test Centre, ProQuest Diagnostic Laboratory, MAXI and Medlink Laboratory Services.
- To date, **658 390** tests (including **14 126** re-tests) have been conducted by authorized laboratories.
- Since the beginning of the outbreak, **138 595** contacts of confirmed cases have been identified, **94** new contacts were identified within the last 24 hours from 9 regions.
- Cumulatively, **135 152** contacts have completed their monitoring period, while **180** contacts are lost to follow-up and a total of **24 512 (20%)** contacts of confirmed cases have tested positive.
- Today, **1 093 (54%)** out of **2 020** active contacts were monitored.

Table 4: Number of people in quarantine, 28 August 2021

Region	Newly quarantined 24 hours	Cumulative number	Number discharged	Number in quarantine now
Erongo	0	6931	6531	400
Hardap	1	2846	2839	7
Kavango (East and West)	0	1668	1665	3
Khomas	0	3692	3690	2
Kharas	0	9909	9689	220
Kunene	0	6355	6133	222
Ohangwena	0	695	695	0
Omaheke	0	14102	13525	577
Omusati	0	2670	2502	168
Oshana	0	400	400	0
Oshikoto	0	21576	21310	266
Otjozondjupa	54	1619	1540	79
Zambezi	0	1991	1991	0
Total	55	74454	72510	1944

➤ Since March 2020, **74 454** people have been placed into quarantine around the country.

➤ A total of **1 944** people are currently in quarantine, with **55** admissions.

Table 5: Summary of COVID-19 vaccine doses administered, 28 August 2021

Region	Cumulative no. of persons vaccinated with doses of Sinopharm and AstraZeneca		Targeted Population	Vaccination Coverage (%)	Cumulative no. of Healthcare Workers vaccinated with doses of Sinopharm and AstraZeneca	
	1 st doses	2 nd doses			1 st doses	2 nd doses
Erongo	22 731	12 005	121 682	10%	957	606
Hardap	13 610	5 657	56 741	10%	425	292
Kharas	9 196	5 386	55 489	10%	584	278
Kavango East	11 104	4 794	117 665	4%	831	432
Kavango West	4 870	2 611	29 228	9%	329	205
Khomas	58 069	34 797	286 641	12%	3 258	1 973
Kunene	10 651	4 242	66 499	6%	508	332
Ohangwena	13 141	5 724	164 102	3%	634	341
Omaheke	9 361	4 062	51 765	8%	335	200
Omusati	14 024	6 961	139 451	5%	775	438
Oshana	13 145	7 716	126 374	6%	1 193	793
Oshikoto	11 089	5 591	124 395	4%	677	475
Otjozondjupa	16 542	9 591	97 903	10%	698	444
Zambezi	3 585	2 386	63 106	4%	447	362
Total	211 118	111 523	1 501 041	7%	11 651	7 171

PUBLIC HEALTH ACTION (S)

- Public Health measures continues to be enforced as the situation is closely monitored.
- The COVID-19 vaccination programme is ongoing throughout the country
- The government and development partners continue to prioritize the continuation of essential health services.

CHALLENGES

- Poor adherence to COVID-19 Infection Prevention and Control (IPC) measures by the general public.

RECOMMENDATIONS

- Continue to give awareness on the importance of adhering to COVID-19 IPC measures; with the involvement of the Security Cluster.

APPROVED



INCIDENT MANAGER
28 AUGUST 2021



SECRETARIAT

For enquiries, please contact

Namibia Public Health Emergency Operations Centre;



PHEOC@mhss.gov.na



0800 100 100



0851 100 100