



NAMIBIA COVID-19 SITUATION REPORT NO. 552

Outbreak Name	COVID-19 outbreak	Country affected	Namibia
Date & Time	21 September 2021 17h00	Investigation start Date	13 March 2020
Prepared by	Surveillance Team		

HIGHLIGHTS/SITUATION UPDATE (21/09/2021)

CUMULATIVE	TOTAL TODAY
Tested 691 844	Tested 1 100
Confirmed 127 071	Confirmed 36
Active 1 032	Active 1 032
Recoveries 122 539	Recoveries 261
Vaccinated 1 st doses 251 174 2 nd doses 161 263	Vaccinated 1 st doses 2 905 2 nd doses 2 030
Deaths 3 488	Deaths 10

- A total of **127 071** cases have been recorded to-date, representing **5%** of the total population (**2 550 226**).
- More female cases **67 587 (53%)** have been recorded.
- Of the total confirmed cases, **4 317 (3%)** are Health Workers, with no new confirmations today.
 - 3 598 (83%) State; 711 (16%) Private, 8 (0.2%) Non-Governmental Organizations.
 - 4 265 (99%) recoveries and 25 (0.6%) deaths.
- The recovery rate now stands at **96%**.
- Khomas and Erongo regions reported the highest number of cases with **41 514 (33%)** and **18 222 (14%)** respectively.
- Of the total fatalities, **3 202 (92%)** are COVID-19 deaths while **286 (8%)** are COVID-19 related deaths. The case fatality rate now stands at **2.7%**.

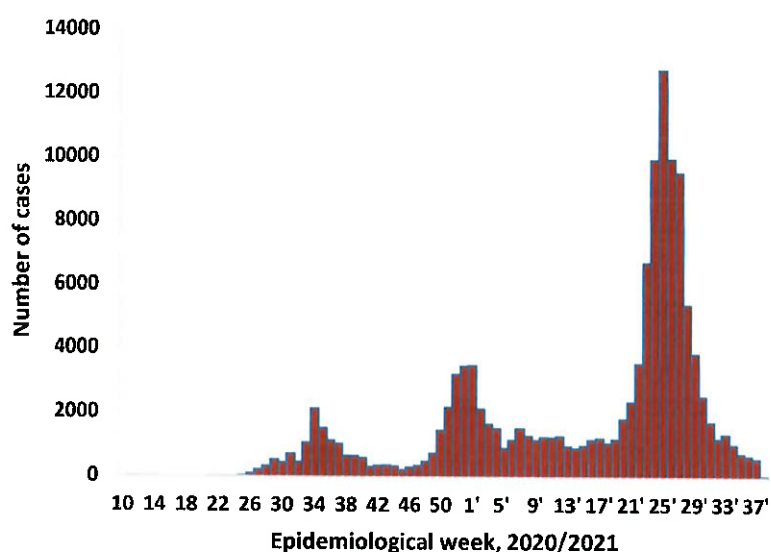
Table 1: Distribution of confirmed COVID-19 cases by region, 21 September 2021

Region	Total cases daily	Total No. of cases	Active cases	Recoveries	Cumulative Deaths	Cumulative deaths with co-morbidities	Non-COVID deaths	Health Workers
Erongo	0	18 222	67	17 740	410	340	5	417
Hardap	1	7 448	47	7 144	257	160	0	123
Karas	6	7 785	91	7 549	145	125	0	237
Kavango East	5	5 474	14	5 264	195	117	1	246
Kavango West	0	637	9	610	18	16	0	38
Khomas	0	41 514	368	40 289	856	669	1	1 489
Kunene	0	3 676	43	3 516	117	85	0	97
Ohangwena	3	4 726	152	4 429	143	90	2	159
Omaheke	0	3 976	7	3 719	250	173	0	121
Omusati	1	5 568	84	5 262	222	134	0	180
Oshana	0	9 003	72	8 603	327	194	1	523
Oshikoto	13	6 697	44	6 478	173	138	2	318
Otjozondjupa	2	9 384	11	9 103	270	185	0	262
Zambezi	5	2 961	23	2 833	105	59	0	106
Total	36	127 071	1 032	122 539	3 488	2 485	12	4 317

EPIDEMIOLOGICAL SITUATION IN NAMIBIA

Table 2: The current distribution for hospitalization of confirmed cases by region, 21 September 2021

Region	Hospitalized confirmed cases	Intensive Care Unit
Erongo	15	5
Hardap	0	0
Kharas	5	0
Kavango East	6	0
Kavango West	1	0
Khomas	15	4
Kunene	8	0
Ohangwena	10	0
Omaheke	0	0
Omusati	13	0
Oshana	11	7
Oshikoto	3	1
Otjozondjupa	3	0
Zambezi	5	0
Total	95	17



- The highest peak of **12 787 (10%)** cases was recorded during week 25 of 2021 (Figure 1).
- After a peak in epi-week 25, the country has seen a gradual reduction in the average number of confirmed cases from 1 598 to 81 in epi-week 37.
- The number of cases have plateaued in the last four weeks as seen in the graph.

- The National Call Center continues operations for 24 hours daily.
- Today (21/09/2021), **786** calls were answered.

Figure 1: Epi-curve for confirmed COVID-19 cases, 21 September 2021

- The laboratory testing capacity has been enhanced; with a total of fifteen (15) laboratories carrying out the testing of samples: NIP, Path-Care, UNAM Molecular, Central Veterinary Laboratory, Namib Poultry, NAMDEB, NamPath, Namibia Central Pathology, DiagnoLab, High Care, Alpha Medical Laboratory, Des-Jo Medical Test Centre, ProQuest Diagnostic Laboratory, MAXI and Medlink Laboratory Services.
- To date, **691 844** tests (including **14 224** re-tests) have been conducted by authorized laboratories.
- Since the beginning of the outbreak, **142 714** contacts of confirmed cases have been identified, **284** new contacts were identified within the last 24 hours from 12 regions.
- Cumulatively, **140 258** contacts have completed their monitoring period, while **288** contacts are lost to follow-up and a total of **25 132 (20%)** contacts of confirmed cases have tested positive.
- Today, **860 (92%)** out of **903** active contacts were monitored.

Table 3: COVID-19 specimen recorded at the Laboratories 21 September 2021

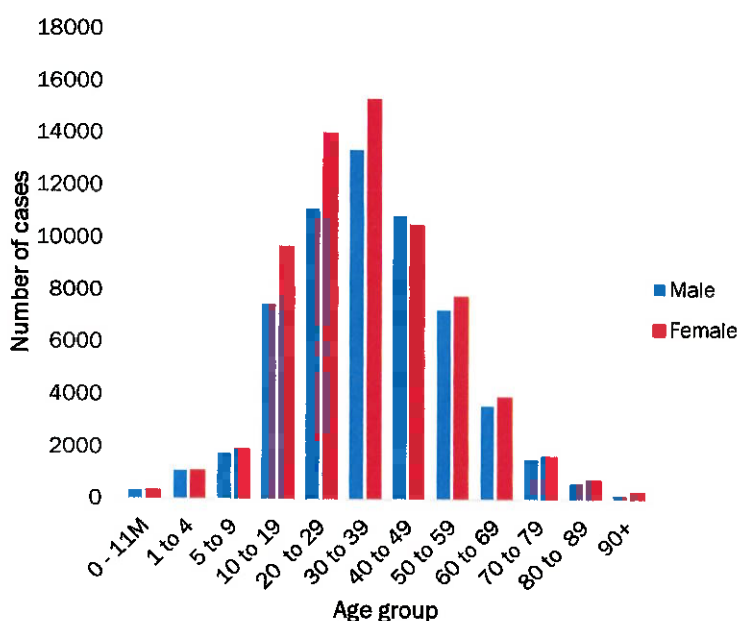
VARIABLES	TOTAL
Total samples received by the Laboratory	691 963
Total samples tested	677 620
Total samples re-tested	14 224
Total positive results	127 071
Total negative results	550 535
Total samples discarded	117
Invalid results	0
Total pending results	7
Indeterminant/Inconclusive	7
Suspected cases in 24 hours (excluding re-tests)	1 100

Table 4: Number of people in quarantine, 21 September 2021

Region	Newly quarantined 24 hours	Cumulative number	Number discharged	Number in quarantine now
Erongo	0	6 931	6 751	180
Hardap	0	2 911	2 900	11
Kavango (East and West)	0	1 673	1 673	0
Khomas	0	3 695	3 694	1
Kharas	0	9 909	9 809	100
Kunene	0	6 493	6 205	288
Ohangwena	0	695	695	0
Omaheke	42	15 196	15 059	137
Omusati	19	2 969	2 938	31
Oshana	0	400	400	0
Oshikoto	54	22 748	22 667	81
Otjozondjupa	0	1 743	1 703	40
Zambezi	14	2 020	1 991	29
Total	129	77 383	76 485	898

➤ Since March 2020, **77 383** people have been placed into quarantine around the country.

➤ A total of **898** people are currently in quarantine, with **129** admissions.



➤ Of the total confirmed cases, **75 411 (59%)** are in the 20-49 years age-brackets which constitutes the majority of the recorded cases.

➤ A total of **21 026 (17%)** of the confirmed cases are among the 5-19 years category.

➤ A total of **15 059 (12%)** of the confirmed cases are among the 50 - 59 years group.

➤ The under 5 years age group make up **2 870 (2%)** of the total cases whereas, **12 705 (10%)** are above 60 years of age.

Figure 2: Age and Sex distribution of COVID-19 confirmed cases 21 September 2021

Table 5: Summary of COVID-19 vaccine doses administered, 21 September 2021

Region	Cumulative no. of persons vaccinated with doses of Sinopharm, AstraZeneca, Sputnik V and Jassen & Johnson		Targeted Population	Vaccination Coverage (%)	Cumulative no. of Healthcare Workers vaccinated with doses of Sinopharm, AstraZeneca, Sputnik V and Jassen & Johnson	
	1 st doses	Fully vaccinated			1 st doses	Fully vaccinated
Erongo	27 111	18 607	121 682	15%	1 049	659
Hardap	16 026	10 113	56 741	17%	459	353
Kharas	11 212	7 685	55 489	14%	612	314
Kavango East	13 006	6 571	117 665	5%	901	537
Kavango West	5 945	4 279	29 228	14%	341	257
Khomas	67 387	46 741	286 641	16%	3 335	2 114
Kunene	13 978	7 500	66 499	11%	545	382
Ohangwena	16 336	10 300	164 102	6%	688	455
Omaheke	11 559	6 081	51 765	12%	350	220
Omusati	16 764	11 068	139 451	8%	828	541
Oshana	15 157	10 453	126 374	8%	1 262	830
Oshikoto	13 497	8 857	124 395	7%	722	555
Otjozondjupa	19 103	13 193	97 903	13%	712	461
Zambezi	4 093	2 974	63 106	5%	494	436
Total	251 174	164 422	1 501 041	11%	12 298	8 114

PUBLIC HEALTH ACTION (S)

- The COVID-19 vaccination programme is ongoing throughout the country.
- Public Health measures continue to be enforced as the situation is closely monitored.
- The government and development partners continue to prioritize the continuation of essential health services.

CHALLENGES

- Slow vaccine uptake among members of the public, and circulation of anti-vaccination information.
- Poor adherence to COVID-19 Infection Prevention and Control (IPC) measures by the general public.

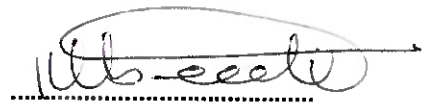
RECOMMENDATIONS

- Encourage the public to get vaccinated and strengthen community health awareness to encounter anti-vaccination information in circulation.
- Continue to give awareness on the importance of adhering to COVID-19 IPC measures; with the involvement of the Security Cluster.

APPROVED



INCIDENT MANAGER
21 SEPTEMBER 2021



SECRETARIAT

For enquiries, please contact
Namibia Public Health Emergency Operations Centre;

 PHEOC@mhss.gov.na

 0800 100 100

 0851 100 100