



**NAMIBIA COVID-19 SITUATION REPORT NO. 521**

Outbreak Name	COVID-19 outbreak	Country affected	Namibia
Date & Time	21 August 2021 20h00	Investigation start Date	13 March 2020
Prepared by	Surveillance Team		

**HIGHLIGHTS/SITUATION UPDATE (21/08/2021)**

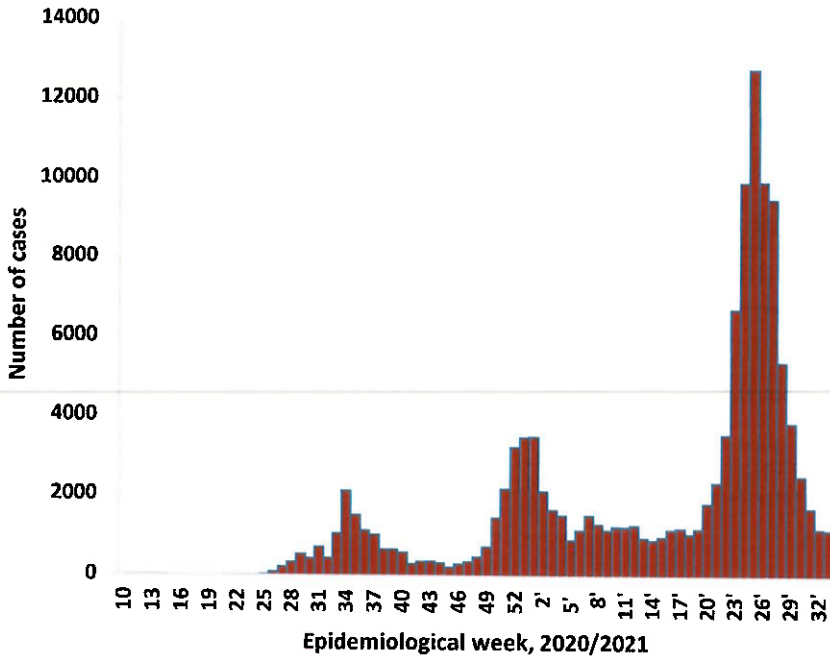
CUMULATIVE	TOTAL TODAY
Tested 648 762	Tested 2 191
Confirmed 123 861	Confirmed 280
Active 2 391	Active 2 391
Recoveries 118 114	Recoveries 29
Vaccinated 1 <sup>st</sup> doses 200 517      2 <sup>nd</sup> doses 96 559	Vaccinated 1 <sup>st</sup> doses 398      2 <sup>nd</sup> doses 655
Deaths 3 345	Deaths 3

- A total of **123 861** cases have been recorded to-date, representing **5%** of the total population (**2 550 226**).
- More female cases **65 671 (53%)** have been recorded.
- Of the total confirmed cases, **4 239 (3%)** are Health Workers.
  - 3 523 (83%) State; 708 (17%) Private, 8 (0.2%) Non-Governmental Organizations.
  - 4 157 (98%) recoveries and 25 (0.6%) deaths.
- The recovery rate now stands at **95%**.
- Khomas and Erongo regions reported the highest number of cases with **41 234 (33%)** and **18 031 (15%)** respectively.
- Of the total fatalities, **3 067 (92%)** are COVID-19 deaths while **278 (8%)** are COVID-19 related deaths. The case fatality rate now stands at **2.7%**.

**Table 1: Distribution of confirmed COVID-19 cases by region, 21 August 2021**

Region	Total cases daily	Total No. of cases	Active cases	Recoveries	Cumulative Deaths	Cumulative deaths with co-morbidities	Non-COVID deaths	Health Workers
Erongo	24	18 055	820	16 828	402	335	5	412
Hardap	4	7 371	74	7 041	256	160	0	122
Kharas	5	7 580	139	7 300	141	124	0	230
Kavango East	3	5 409	36	5 196	177	114	0	244
Kavango West	1	587	16	554	17	14	0	38
Khomas	9	41 243	267	40 132	843	658	1	1 481
Kunene	10	3 420	68	3 267	85	69	0	91
Ohangwena	91	4 133	329	3 676	126	81	2	144
Omaheke	1	3 689	30	3 410	249	172	0	119
Omusati	72	5 091	294	4 597	200	121	0	171
Oshana	18	8 750	170	8263	316	187	1	515
Oshikoto	13	6 498	47	6 289	160	127	2	312
Otjozondjupa	17	9 164	71	8 823	270	185	0	256
Zambezi	12	2 871	30	2 738	103	59	0	104
<b>Total</b>	<b>280</b>	<b>123 861</b>	<b>2 391</b>	<b>118 114</b>	<b>3 345</b>	<b>2 406</b>	<b>11</b>	<b>4 239</b>

## EPIDEMIOLOGICAL SITUATION IN NAMIBIA



➤ The highest peak of **12 787 (10%)** cases was recorded during week 25 of 2021 (Figure 1).

➤ After a peak in epi-week 25, the country has seen a gradual reduction in the average number of confirmed cases to 170 in epi-week 32.

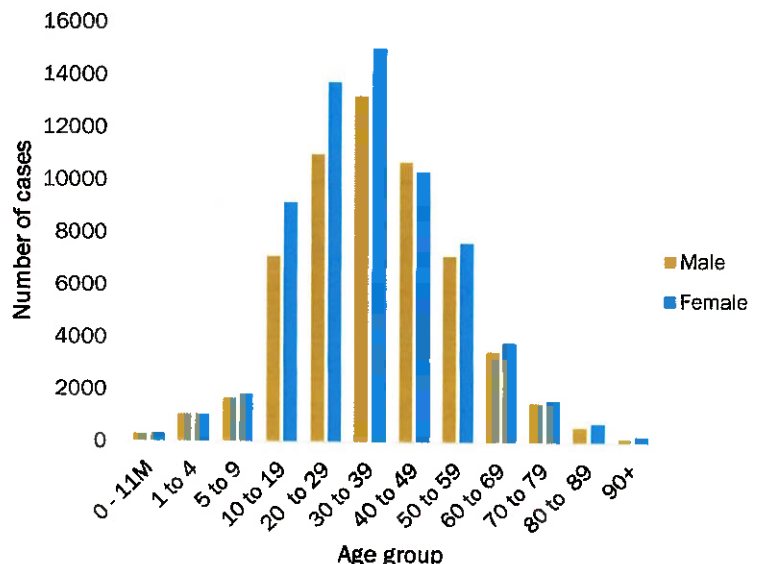
➤ The National Call Center continues operations for 24 hours daily.

**Figure 1: Epi-curve for confirmed COVID-19 cases, 21 August 2021**

**Table 2: The current distribution for hospitalization of confirmed cases by region, 21 August 2021**

Region	Hospitalized confirmed cases	Intensive Care Unit
Erongo	24	11
Hardap	4	0
ǀKharas	15	0
Kavango East	11	0
Kavango West	3	0
Khomas	40	19
Kunene	19	0
Ohangwena	18	0
Omaheke	1	0
Omusati	17	0
Oshana	35	7
Oshikoto	4	2
Otjozondjupa	8	0
Zambezi	5	0
<b>Total</b>	<b>204</b>	<b>39</b>

- Of the total confirmed cases, **74 189 (60%)** are in the 20-49 years age-brackets which constitutes the majority of the recorded cases.
- A total of **19 828 (16%)** of the confirmed cases are among the 5-19 years category.
- A total of **14 795 (12%)** of the confirmed cases are among the 50 - 59 years group.
- The under 5 years age group make up **2 759 (2%)** of the total cases whereas, **12 290 (10%)** are above 60 years of age.



**Figure 2: Age and Sex distribution of COVID-19 confirmed cases 21 August 2021**

**Table 3: COVID-19 specimen recorded at the Laboratories  
21 August 2021**

VARIABLES	TOTAL
Total samples received by the Laboratory	648 879
Total samples tested	634 672
Total samples re-tested	14 090
Total positive results	123 861
Total negative results	510 800
Total samples discarded	117
Invalid results	0
Total pending results	6
Indeterminant/Inconclusive	5
Suspected cases in 24 hours (excluding re-tests)	2 161

- The laboratory testing capacity has been enhanced; with a total of fifteen (15) laboratories carrying out the testing of samples: NIP, Path-Care, UNAM Molecular, Central Veterinary Laboratory, Namib Poultry, NAMDEB, NamPath, Namibia Central Pathology, DiagnoLab, High Care, Alpha Medical Laboratory, Des-Jo Medical Test Centre, ProQuest Diagnostic Laboratory, MAXI and Medlink Laboratory Services.
- To date, **648 762** tests (including **14 090** re-tests) have been conducted by authorized laboratories.
- Since the beginning of the outbreak, **136 650** contacts of confirmed cases have been identified, **166** new contacts were identified within the last 24 hours from 9 regions.
- Cumulatively, **133 056** contacts have completed their monitoring period, while **147** contacts are lost to follow-up and a total of **24 316 (19%)** contacts of confirmed cases have tested positive.
- Today, **1 081 (53%)** out of **2 057** active contacts were

**Table 4: Number of people in quarantine, 21 August 2021**

Region	Newly quarantined 24 hours	Cumulative number	Number discharged	Number in quarantine now
Erongo	0	6 931	6 517	414
Hardap	0	2 824	2 814	10
Kavango (East and West)	0	1 665	1 665	0
Khomas	0	3 689	3 689	0
Kharas	0	9 445	9 303	142
Kunene	0	6 079	5882	197
Ohangwena	0	695	695	0
Omaheke	0	13 114	12 835	279
Omusati	0	2 541	2 360	181
Oshana	0	400	400	0
Oshikoto	0	21 254	20 937	317
Otjozondjupa	0	1 540	1 540	0
Zambezi	0	1 991	1 824	167
<b>Total</b>	<b>0</b>	<b>72 168</b>	<b>70 461</b>	<b>1 707</b>

- Since March 2020, **72 168** people have been placed into quarantine around the country.
- A total of **1 707** people are currently in quarantine, with no new admissions.

**Table 5: Summary of COVID-19 vaccine doses administered, 21 August 2021**

Region	Cumulative no. of persons vaccinated with doses of Sinopharm and AstraZeneca		Cumulative no. of Healthcare Workers vaccinated with doses of Sinopharm and AstraZeneca	
	1 <sup>st</sup> doses	2 <sup>nd</sup> doses	1 <sup>st</sup> doses	2 <sup>nd</sup> doses
Erongo	21 025	10 310	907	588
Hardap	12 430	4 324	415	274
Kharas	8 792	4 880	567	265
Kavango East	10 652	4 264	831	409
Kavango West	4 515	2 283	329	205
Khomas	56 254	31 424	3 203	1 867
Kunene	9 993	3 568	508	332
Ohangwena	12 433	4 698	634	341
Omaheke	8 783	2 960	332	192
Omusati	13 316	5 676	775	438
Oshana	12 480	6 525	1 117	712
Oshikoto	10 431	4 843	659	452
Otjozondjupa	15 945	8 588	684	432
Zambezi	3 468	2 216	425	330
<b>Total</b>	<b>200 517</b>	<b>96 559</b>	<b>11 386</b>	<b>6 837</b>

### PUBLIC HEALTH ACTION (S)

- Public Health measures continues to be enforced as the situation is closely monitored.
- The COVID-19 vaccination programme is ongoing throughout the country
- The government and development partners continue to prioritize the continuation of essential health services.

### CHALLENGES

- Poor adherence to COVID-19 Infection Prevention and Control (IPC) measures by the general public.

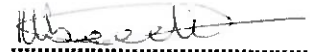
### RECOMMENDATIONS

- Continue to give awareness on the importance of adhering to COVID-19 IPC measures; with the involvement of the Security Cluster.

APPROVED



INCIDENT MANAGER  
21 AUGUST 2021



SECRETARIAT

For enquiries, please contact  
Namibia Public Health Emergency Operations Centre;



[PHEOC@mhss.gov.na](mailto:PHEOC@mhss.gov.na)



0800 100 100



0851 100 100