



## NAMIBIA COVID-19 SITUATION REPORT NO. 435

|               |                     |                          |               |
|---------------|---------------------|--------------------------|---------------|
| Outbreak Name | COVID-19 outbreak   | Country affected         | Namibia       |
| Date & Time   | 27.05.2021<br>17h00 | Investigation start Date | 13 March 2020 |
| Prepared by   | Surveillance Team   |                          |               |

### HIGHLIGHTS/SITUATION UPDATE (27/05/2021)

#### CUMULATIVE

Tested 425433

Confirmed 54268

Active 3397

Recoveries 50053

Deaths 807

#### TOTAL TODAY

Tested 2033

Confirmed 365

Active 3397

Recoveries 383

Deaths 12

- A total of **54268** cases have been recorded to-date, representing **2%** of the total population (**2550226**).
- More female cases **27463 (51%)** have been recorded compared to male cases **26805 (49%)**.
- Of the total confirmed cases, **2369 (4%)** are Health Workers.
- **1880 (79%)** State; **485 (20%)** Private, **4 (0.2%)** Non-Governmental Organizations.
- **2213 (93%)** recoveries and **6 (0.3%)** deaths.
- The recovery rate now stands at **92%**.
- All fourteen (14) regions have reported confirmed cases; **Khomas** and **Erongo** regions reported the highest with **19584 (36%)** and **9185 (17%)** respectively.
- Of the total fatalities, **671 (83%)** are COVID-19 deaths while **136 (17%)** are COVID-19 related deaths. The case fatality rate now stands at **1%**.

**Table 1: Distribution of confirmed COVID-19 cases by region, 27 May 2021**

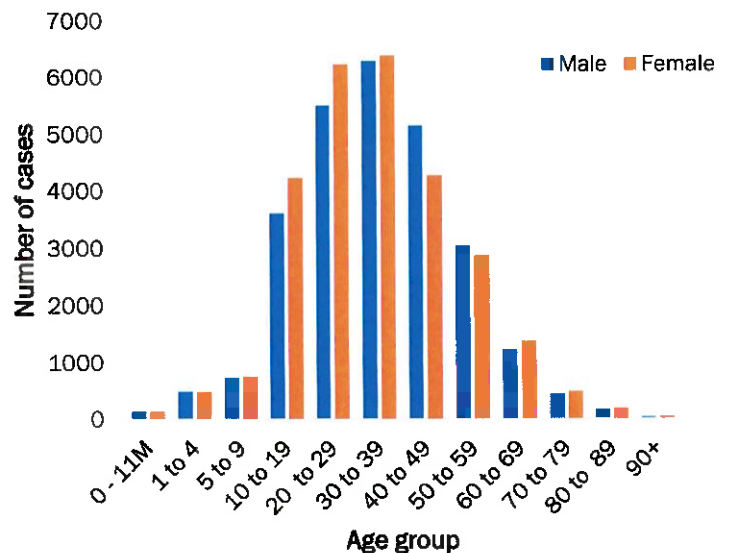
| Region       | Total No. of cases | Active cases | Recoveries   | Cumulative Deaths | Cumulative deaths with co-morbidities | Non-COVID deaths | Health Workers |
|--------------|--------------------|--------------|--------------|-------------------|---------------------------------------|------------------|----------------|
| Erongo       | 9185               | 246          | 8786         | 148               | 133                                   | 5                | 242            |
| Hardap       | 3362               | 285          | 3019         | 58                | 38                                    | 0                | 80             |
| //Kharas     | 3395               | 170          | 3171         | 54                | 45                                    | 0                | 148            |
| Kavango East | 2023               | 52           | 1945         | 25                | 19                                    | 0                | 131            |
| Kavango West | 234                | 5            | 227          | 2                 | 2                                     | 0                | 12             |
| Khomas       | 19584              | 1911         | 17382        | 290               | 246                                   | 1                | 973            |
| Kunene       | 1628               | 30           | 1582         | 16                | 16                                    | 0                | 57             |
| Ohangwena    | 1383               | 77           | 1284         | 20                | 16                                    | 2                | 67             |
| Omaheke      | 1290               | 19           | 1246         | 25                | 21                                    | 0                | 48             |
| Omusati      | 1403               | 132          | 1259         | 12                | 8                                     | 0                | 43             |
| Oshana       | 3260               | 177          | 3035         | 47                | 32                                    | 1                | 251            |
| Oshikoto     | 2941               | 31           | 2882         | 26                | 22                                    | 2                | 132            |
| Otjozondjupa | 3776               | 242          | 3464         | 70                | 53                                    | 0                | 143            |
| Zambezi      | 804                | 19           | 771          | 14                | 10                                    | 0                | 42             |
| <b>Total</b> | <b>54268</b>       | <b>3397</b>  | <b>50053</b> | <b>807</b>        | <b>661</b>                            | <b>11</b>        | <b>2369</b>    |

## EPIDEMIOLOGICAL SITUATION IN NAMIBIA

**Table 2: Summary of COVID-19 vaccines administered, as of 27 May 2021**

| Region       | Cumulative no. of persons vaccinated with doses of Sinopharm and AZ |                      | Cumulative no. of Healthcare Workers vaccinated with doses of Sinopharm and AZ |                      |
|--------------|---------------------------------------------------------------------|----------------------|--------------------------------------------------------------------------------|----------------------|
|              | 1 <sup>st</sup> Dose                                                | 2 <sup>nd</sup> Dose | 1 <sup>st</sup> Dose                                                           | 2 <sup>nd</sup> Dose |
| Erongo       | 7039                                                                | 885                  | 441                                                                            | 132                  |
| Hardap       | 2994                                                                | 331                  | 273                                                                            | 39                   |
| //Kharas     | 2584                                                                | 288                  | 416                                                                            | 86                   |
| Kavango East | 4636                                                                | 589                  | 525                                                                            | 70                   |
| Kavango West | 2008                                                                | 165                  | 221                                                                            | 19                   |
| Khomas       | 22373                                                               | 2631                 | 1652                                                                           | 481                  |
| Kunene       | 3103                                                                | 498                  | 387                                                                            | 208                  |
| Ohangwena    | 3737                                                                | 545                  | 386                                                                            | 74                   |
| Omaheke      | 3078                                                                | 426                  | 249                                                                            | 85                   |
| Omusati      | 3456                                                                | 291                  | 555                                                                            | 82                   |
| Oshana       | 3289                                                                | 686                  | 687                                                                            | 262                  |
| Oshikoto     | 1559                                                                | 279                  | 328                                                                            | 101                  |
| Otjozondjupa | 5348                                                                | 566                  | 418                                                                            | 98                   |
| Zambezi      | 1140                                                                | 138                  | 197                                                                            | 32                   |
| <b>Total</b> | <b>66344</b>                                                        | <b>8318</b>          | <b>6735</b>                                                                    | <b>1769</b>          |

- Of the total confirmed cases, **33840 (62%)** are in the 20-49 years age-brackets which constitutes the majority of the recorded cases.
- A total of **9311 (17%)** of the confirmed cases are among the 5-19 years category.
- The under 5 years age group make up **1237 (2%)** of the total cases whereas, **3957 (7%)** are above 60 years of age.



**Figure 1: Age and Sex distribution of COVID-19 confirmed cases 27 May 2021**

**Table 3: COVID-19 specimen recorded at the Laboratories 27 May 2021**

| VARIABLES                                        | TOTAL  |
|--------------------------------------------------|--------|
| Total samples received by the Laboratory         | 425550 |
| Total samples tested                             | 413305 |
| Total samples re-tested                          | 12128  |
| Total positive results                           | 54268  |
| Total negative results                           | 358984 |
| Total samples discarded                          | 117    |
| Invalid results                                  | 0      |
| Total pending results                            | 46     |
| Indeterminant/Inconclusive                       | 7      |
| Suspected cases in 24 hours (excluding re-tests) | 2019   |

- To date, **425433** tests (including **12128** re-tests) have been conducted by NIP, Path-Care, NAMDEB, UNAM, Namib Poultry, Diagno, NAMPath, Namibia Central Pathology, High Care and Central Veterinary laboratories
- Since the beginning of the outbreak, **95781** contacts of confirmed cases have been identified, **312** new contacts were identified within the last 24 hours from 11 regions.
- Cumulatively, **91748** contacts have completed their monitoring period, while **118** contacts are lost to follow-up and a total of **13616 (25%)** contacts of confirmed cases have positive.
- Today, **1514 (47%)** out of **3202** active contacts were monitored.

➤ The highest peaks of **3463 (6%)** and **3485 (6%)** cases were recorded during week 53 of 2020 and 1 of 2021 respectively (Figure 2).

➤ The National Call Center continues operations for 24 hours daily.

➤ Today (27/05/2021), **513** calls were answered including **7** alerts.

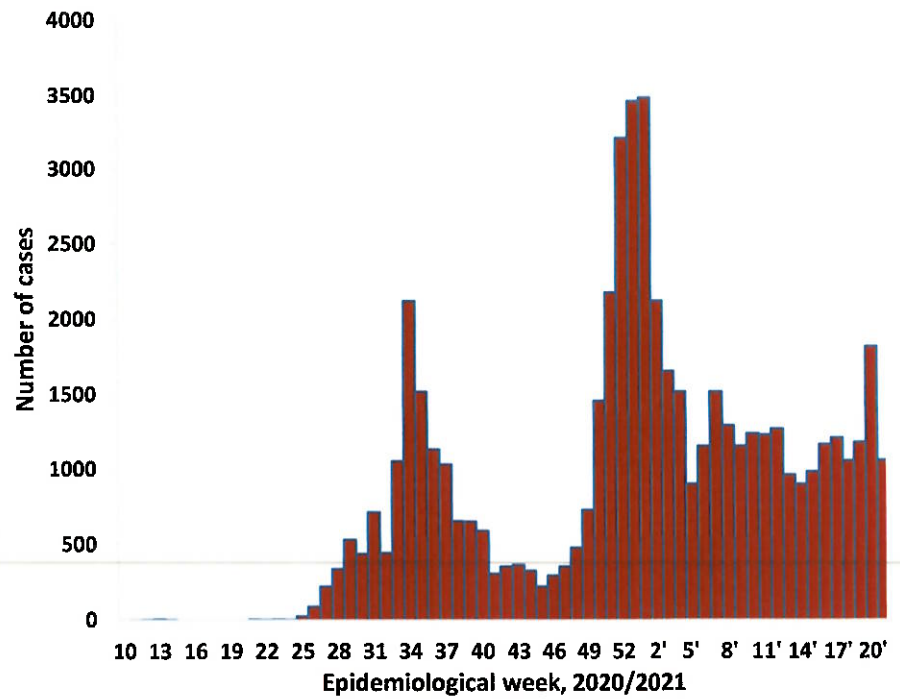
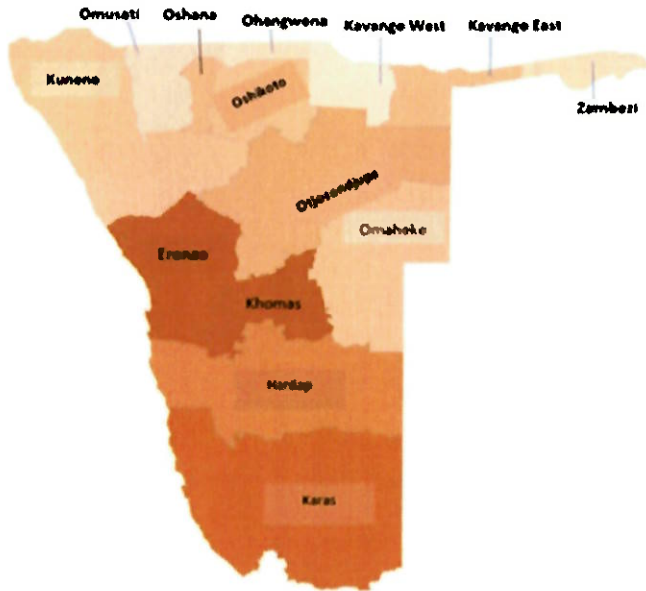


Figure 2: Epi-curve for confirmed COVID-19 cases, 27 May 2021



Cumulative\_confirmed cases per 100 000 people

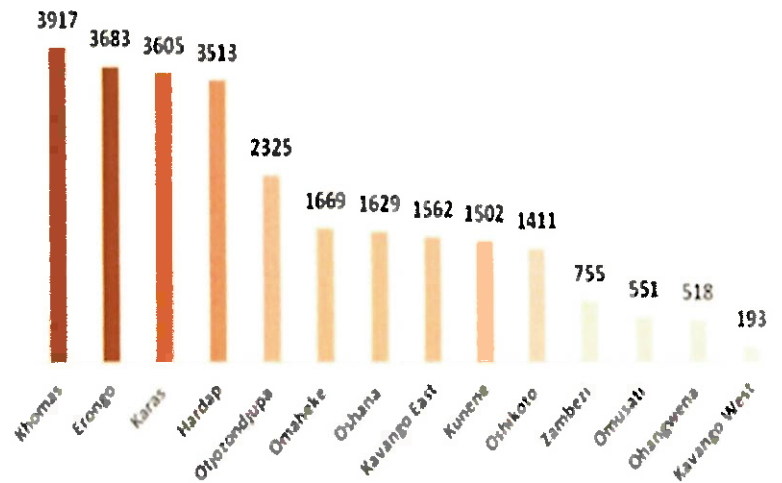


Figure 3: Distribution of cumulative confirmed cases per 100 000 by region, 27 May 2021

Table 4: Number of people in mandatory quarantine facilities, 27 May 2021

| Region                  | Newly quarantined 24 hours | Cumulative number | Number discharged | Number in quarantine now |
|-------------------------|----------------------------|-------------------|-------------------|--------------------------|
| Erongo                  | 0                          | 5683              | 5608              | 75                       |
| Hardap                  | 0                          | 1911              | 1858              | 53                       |
| Kavango (East and West) | 0                          | 1426              | 1418              | 8                        |
| Khomas                  | 6                          | 3501              | 3462              | 39                       |
| //Kharas                | 0                          | 6449              | 6049              | 400                      |
| Kunene                  | 0                          | 4988              | 4934              | 54                       |
| Ohangwena               | 0                          | 695               | 695               | 0                        |
| Omaheke                 | 0                          | 7025              | 6792              | 233                      |
| Omusati                 | 142                        | 948               | 569               | 379                      |
| Oshana                  | 0                          | 400               | 400               | 0                        |
| Oshikoto                | 211                        | 13182             | 12627             | 555                      |
| Otjozondjupa            | 0                          | 1540              | 1476              | 64                       |
| Zambezi                 | 0                          | 1791              | 1624              | 167                      |
| <b>Total</b>            | <b>359</b>                 | <b>49539</b>      | <b>47512</b>      | <b>2027</b>              |

➤ Since March 2020, **49539** people have been placed into mandatory quarantine facilities around the country.

➤ A total of **2027** people are currently in quarantine, with **359** new admissions.

### **PUBLIC HEALTH ACTION (S)**

The COVID-19 vaccination programme is ongoing throughout the country  
The government and development partners continue to prioritize the continuation of essential health services.

### **CHALLENGES**

- Non-adherence to COVID-19 Infection Prevention and Control (IPC) measures by the general public.

### **RECOMMENDATIONS**


- Continue to give awareness on the importance of adhering to COVID -19 IPC measures; with the involvement of the Security Cluster.

**APPROVED**



**INCIDENT MANAGER**

**27 MAY 2021**



**SECRETARIAT**

For enquiries, please contact

**Namibia Public Health Emergency Operations Centre;**

 [PHEOC@mhss.gov.na](mailto:PHEOC@mhss.gov.na)

 0800 100 100

 0851 100 100