



## NAMIBIA COVID-19 SITUATION REPORT NO. 418

<b>Outbreak Name</b>	COVID-19 outbreak	<b>Country affected</b>	Namibia
<b>Date &amp; Time</b>	10.05.2021 17h00	<b>Investigation start Date</b>	13 March 2020
<b>Prepared by</b>	Surveillance Team		

### HIGHLIGHTS/SITUATION UPDATE (10/05/2021)

- A total of **50301** cases have been recorded to-date, representing **2%** of the population.
- Cases are equally distributed by gender at **50%**.
- Of the total confirmed cases, **2166 (4%)** are Health Workers.
  - 1703 (79%) State; 459 (21%) Private, 4 (0.2%) Non-Governmental Organizations.
  - 2064 (95%) recoveries and 6 (0.3%) deaths.
- The recovery rate now stands at **94%**.
- All fourteen (14) regions have reported confirmed cases; *Khomas* and *Erongo* regions reported the highest with **17847 (35%)** and **8804 (18%)** respectively.
- Of the total fatalities, **572 (82%)** are COVID-19 deaths while **124 (18%)** are COVID-19 related deaths.

#### CUMULATIVE

Tested 399172

Confirmed 50301

Active 2076

Recoveries 47518

Deaths 696

#### TOTAL TODAY

Tested 1173

Confirmed 92

Active 2076

Recoveries 134

Deaths 5

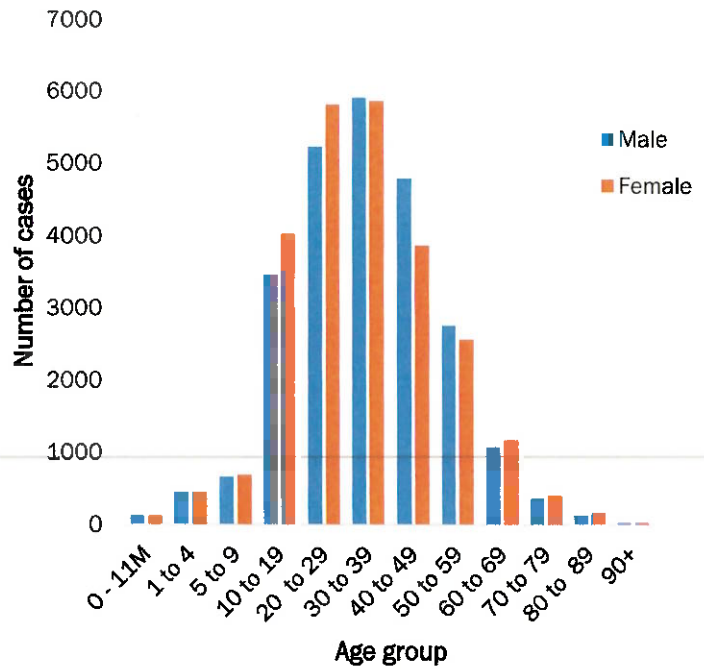
**Table 1: Distribution of confirmed COVID-19 cases by region, 10 May 2021**

Region	Total No. of cases	Active cases	Recoveries	Cumulative Deaths	Cumulative deaths with co-morbidities	Non-COVID deaths	Vaccine data	Health Workers
Erongo	8804	160	8504	135	124	5	4342	228
Hardap	2958	132	2779	47	32	0	1922	72
//Kharas	3110	121	2945	44	35	0	1479	138
Kavango East	1951	25	1902	24	18	0	3442	119
Kavango West	230	0	228	2	2	0	994	12
Khomas	17847	934	16663	249	222	1	13573	876
Kunene	1533	26	1491	16	16	0	2086	56
Ohangwena	1277	94	1164	17	13	2	2388	63
Omaheke	1134	54	1064	16	12	0	2873	44
Omusati	1322	52	1259	11	8	0	2135	34
Oshana	3039	98	2904	36	23	1	2065	230
Oshikoto	2780	127	2631	20	18	2	933	123
Otjozondjupa	3540	228	3246	66	51	0	3246	131
Zambezi	776	25	738	13	9	0	610	40
<b>Total</b>	<b>50301</b>	<b>2076</b>	<b>47518</b>	<b>696</b>	<b>583</b>	<b>11</b>	<b>42088</b>	<b>2166</b>



# EPIDEMIOLOGICAL SITUATION IN NAMIBIA

- Of the total confirmed cases, **31543 (63%)** are in the 20-49 years age-brackets which constitutes the majority of the recorded cases.
- A total of **8870 (18%)** of the confirmed cases are among the 5-19 years category.
- The under 5 years age group make up **1147 (2%)** of the total cases whereas, **3396 (7%)** are above 60 years of age.

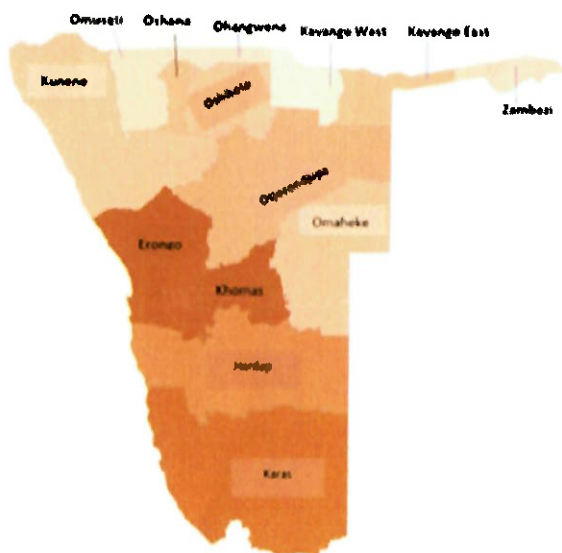


**Figure 1: Age and Sex distribution of COVID-19 confirmed cases 10 May 2021**

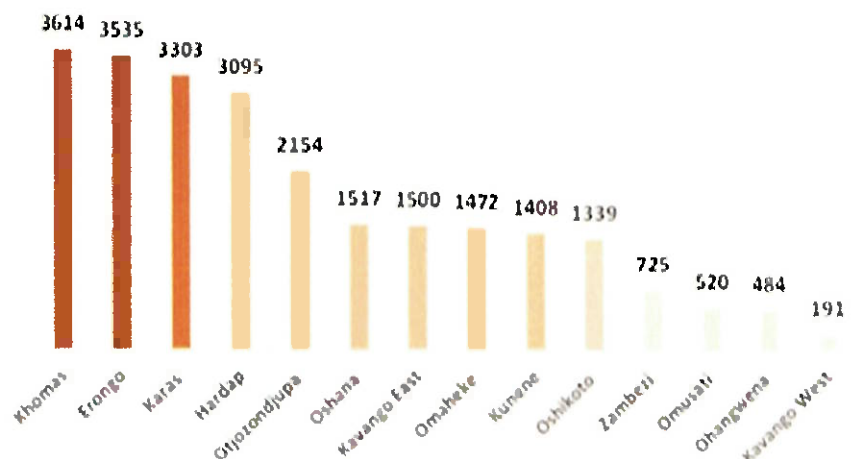
**Table 2: COVID-19 specimen recorded at the Laboratories 10 May 2021**

VARIABLES	TOTAL
Total samples received by the Laboratory	399289
Total samples tested	387192
Total samples re-tested	11980
Total positive results	50301
Total negative results	336838
Total samples discarded	117
Invalid results	0
Total pending results	46
Indeterminant/Inconclusive	7
Suspected cases in 24 hours (excluding re-tests)	1172

- To date, **399172** tests (including **11980** re-tests) have been conducted by NIP, Path-Care, NAMDEB, UNAM, Namib Poultry, Diagno, NAMPath, Namibia Central Pathology, High Care and Central Veterinary laboratories
- Since the beginning of the outbreak, **90648** contacts of confirmed cases have been identified, **190** new contacts were identified within the last 24 hours from 12 regions.
- Cumulatively, **87233** contacts have completed their monitoring period, while a total of **12620 (25%)** contacts of confirmed cases have tested positive.
- Today, **633 (22%)** out of **2817** active contacts monitored.



**Cumulative\_ confirmed cases per 100 000 people**



**Figure 2: Distribution of cumulative confirmed cases per 100 000 by region, 10 May 2021**

➤ The highest peaks of **3463 (7%)** and **3485 (7%)** cases were recorded during week 53 of 2020 and 1 of 2021 respectively (Figure 3).

➤ The National Call Center continues operations for 24 hours daily.

➤ Today (10/05/2021), **461** calls were answered including **23** alerts.

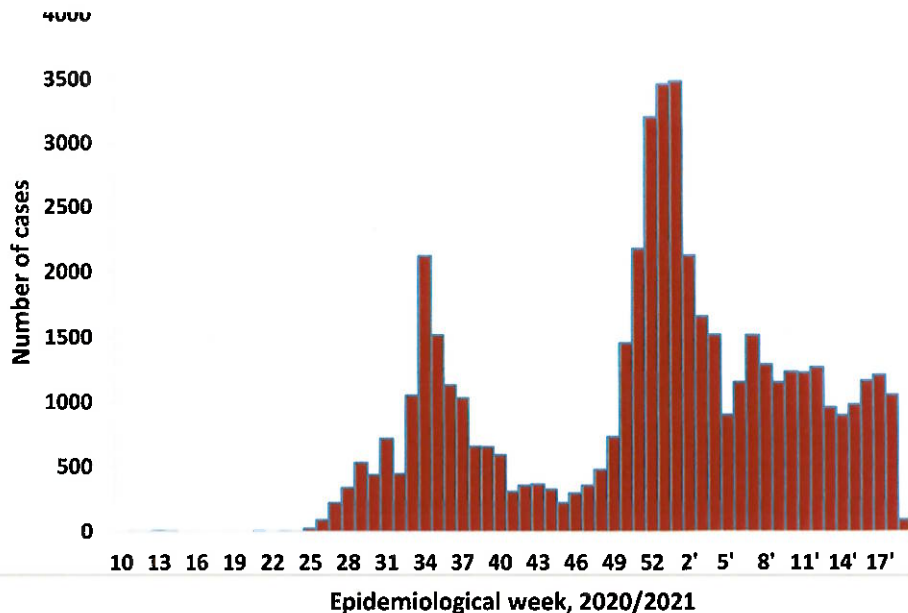


Figure 3: Epi-curve for confirmed COVID-19 cases, 10 May 2021

Table 3: Number of people in mandatory quarantine facilities, 10 May 2021

Region	Newly quarantined 24 hours	Cumulative number	Number discharged	Number in quarantine now
Erongo	0	5382	5382	0
Hardap	5	1767	1715	52
Kavango (East and West)	5	1377	1367	10
Khomas	0	3438	3430	8
//Kharas	0	5950	5839	111
Kunene	0	4767	4685	82
Ohangwena	0	695	692	3
Omaheke	0	6291	6125	166
Omusati	0	569	569	0
Oshana	0	400	400	0
Oshikoto	54	12283	11591	692
Otjozondjupa	0	1476	1453	23
Zambezi	0	1791	1624	167
<b>Total</b>	<b>64</b>	<b>46186</b>	<b>44872</b>	<b>1314</b>

➤ Since March 2020, **46186** people have been placed into mandatory quarantine facilities around the country.

➤ A total of **1314** people are currently in quarantine, with **464** new admissions.

**PUBLIC HEALTH ACTION (S)**

- The COVID-19 vaccination programme has been extended to other regions and is ongoing.
- The government and developmental partners continue to prioritize the continuation of essential health services.

**CHALLENGES**

- Lack of isolation units and facilities for cases detected in boarding schools and police holding cells.

**RECOMMENDATIONS**

- Establish fully equipped isolation units and facilities for cases detected in schools and police holding cells.

APPROVED

*[Signature]*  
INCIDENT MANAGER  
10 MAY 2021

*[Signature]*  
SECRETARIAT

For enquiries, please contact  
**Namibia Public Health Emergency Operations Centre;**  
[PHEOC@mhss.gov.na](mailto:PHEOC@mhss.gov.na)  
 0800 100 100  
 0851 100 100