



NAMIBIA COVID-19 SITUATION REPORT NO. 413

Outbreak Name	COVID-19 outbreak	Country affected	Namibia
Date & Time	05.05.2021 17h00	Investigation start Date	13 March 2020
Prepared by	Surveillance Team		

HIGHLIGHTS/SITUATION UPDATE (05/05/2021)

CUMULATIVE

Tested 392527

Confirmed 49460

Active 1853

Recoveries 46922

Deaths 674

TOTAL TODAY

Tested 1251

Confirmed 137

Active 1853

Recoveries 239

Deaths 7

- A total of **49460** cases have been recorded to-date, representing **2%** of the population.
- Cases are equally distributed by gender at **50%**.
- Of the total confirmed cases, **2127 (4%)** are Health Workers.
 - 1673 (79%) State; 450 (21%) Private, 4 (0.2%) Non-Governmental Organizations.
 - 2064 (97%) recoveries and 6 (0.3%) deaths.
- The recovery rate now stands at **95%**.
- All fourteen (14) regions have reported confirmed cases; **Khomas and Erongo** regions reported the highest with **17537 (35%)** and **8712 (18%)** respectively.
- Of the total fatalities, **554 (82%)** are COVID-19 deaths while **123 (18%)** are COVID-19 related deaths.

Table 1: Distribution of confirmed COVID-19 cases by region, 05 May 2021

Region	Total No. of cases	Active cases	Recoveries	Cumulative Deaths	Cumulative deaths with co-morbidities	Non-COVID deaths	Vaccine data	Health Workers
Erongo	8712	188	8388	131	122	5	3949	228
Hardap	2881	163	2671	47	32	0	1671	70
//Kharas	3030	86	2901	43	34	0	1177	136
Kavango East	1928	30	1874	24	18	0	3009	116
Kavango West	229	1	226	2	2	0	842	12
Khomas	17537	783	16514	239	214	1	11824	855
Kunene	1514	21	1478	15	15	0	1127	55
Ohangwena	1254	72	1164	16	13	2	1056	62
Omaheke	1103	29	1059	15	11	0	1329	44
Omusati	1302	32	1259	11	8	0	1576	34
Oshana	3012	72	2904	35	22	1	1658	228
Oshikoto	2760	108	2631	19	18	2	666	123
Otjozondjupa	3447	251	3132	64	49	0	2499	124
Zambezi	751	17	721	13	9	0	315	40
Total	49460	1853	46922	674	567	11	32698	2127

- Of the total confirmed cases, **31064 (63%)** are in the 20-49 years age-brackets which constitutes the majority of the recorded cases.
- A total of **8760 (18%)** of the confirmed cases are among the 5-19 years category.
- The under 5 years age group make up **1123 (2%)** of the total cases whereas, **3301 (7%)** are above 60 years of age.

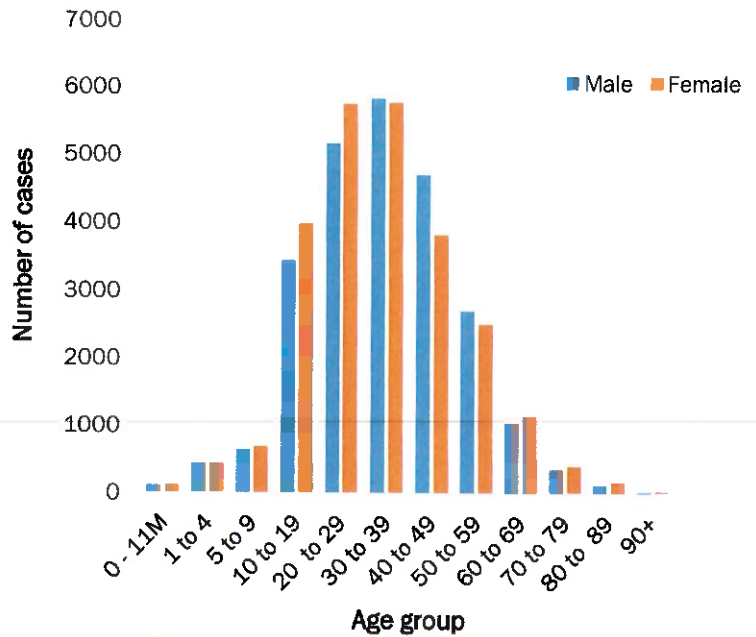


Figure 1: Age and Sex distribution of COVID-19 confirmed cases 05 May 2021

Table 2: COVID-19 specimen recorded at the Laboratories 05 May 2021

VARIABLES	TOTAL
Total samples received by the Laboratory	392644
Total samples tested	380580
Total samples re-tested	11947
Total positive results	49460
Total negative results	331067
Total samples discarded	117
Invalid results	0
Total pending results	46
Indeterminant/Inconclusive	7
Suspected cases in 24 hours (excluding re-tests)	1247

- To date, **392527** tests (including **11947** re-tests) have been conducted by NIP, Path-Care, NAMDEB, UNAM, Namib Poultry, Diagno, NAMPath, Namibia Central Pathology, Highcare and Central Veterinary laboratories
- Since the beginning of the outbreak, **89737** contacts of confirmed cases have been identified, **349** new contacts were identified within the last 24 hours from 13 regions.
- Cumulatively, **85630** contacts have completed their monitoring period, while a total of **12522 (25%)** contacts of confirmed cases have tested positive.
- Today, **2700 (77%)** out of **3504** active contacts monitored.

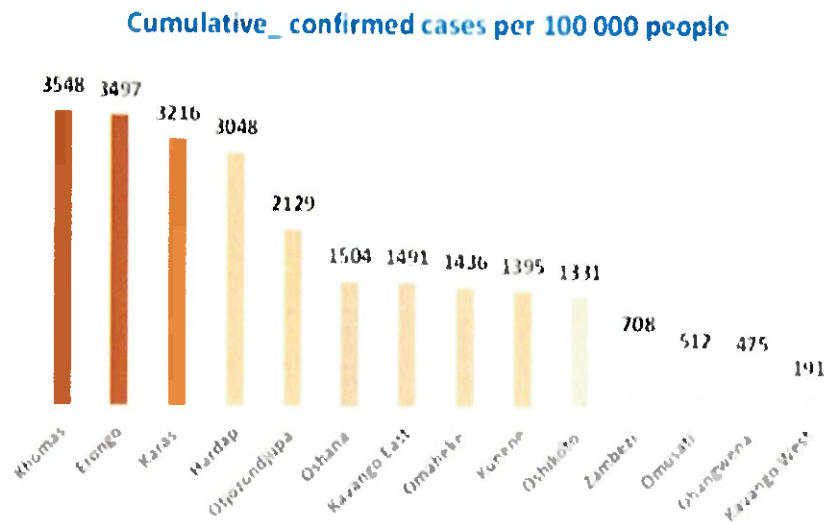
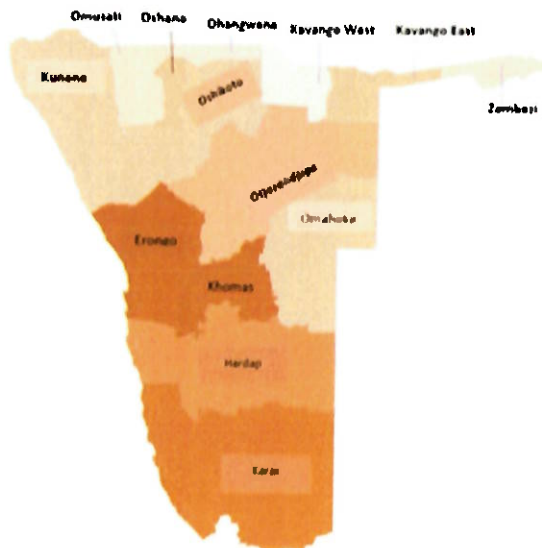


Figure 2: Distribution of cumulative confirmed cases per 100 000 by region, 05 May 2021

➤ The highest peaks of **3463 (7%)** and **3485 (7%)** cases were recorded during week 53 of 2020 and 1 of 2021 respectively (Figure 3).

➤ The National Call Center continues operations for 24 hours daily.

➤ Today (05/05/2021), **532** calls were answered including **14** alerts.

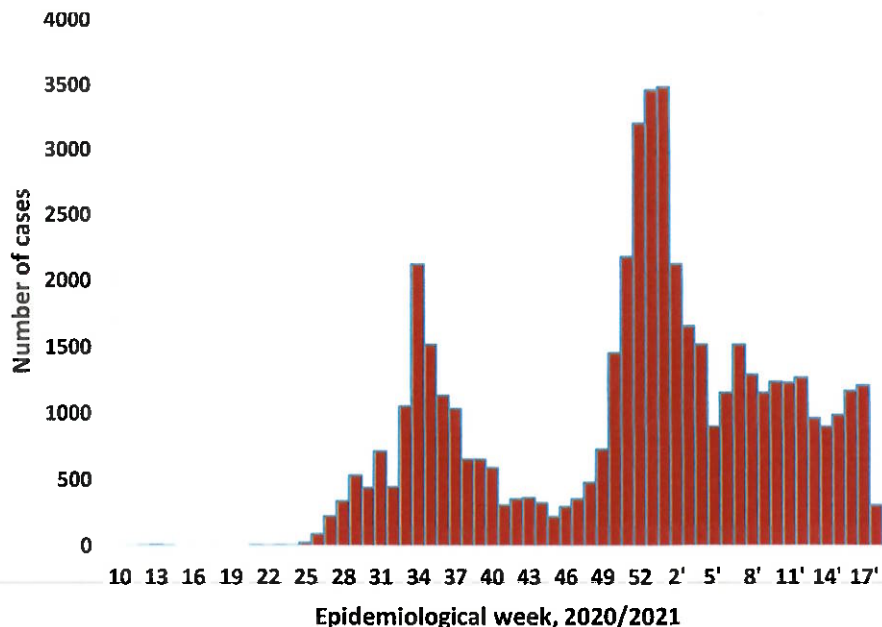


Figure 3: Epi-curve for confirmed COVID-19 cases, 05 May 2021

Table 3: Number of people in mandatory quarantine facilities, 05 May 2021

Region	Newly quarantined 24 Hrs.	Cumulative number	Number discharged	Number in quarantine now
Erongo	0	5382	5382	0
Hardap	0	1730	1659	71
Kavango	13	1356	1334	22
Khomas	0	3436	3429	7
//Kharas	0	5888	5782	106
Kunene	6	4767	4685	82
Ohangwena	0	692	692	0
Omaheke	38	6170	5965	205
Omusati	0	566	566	0
Oshana	0	400	400	0
Oshikoto	57	12125	11382	743
Otjozondjupa	0	1476	1453	23
Zambezi	0	1791	1624	167
Total	114	45779	44353	1426

➤ Since March 2020, **45779** people have been placed into mandatory quarantine facilities around the country.

➤ A total of **1426** people are currently in quarantine, with **114** new admissions.

PUBLIC HEALTH ACTION (S)

- The COVID-19 vaccination programme has been extended to other regions and is ongoing.
- The government and developmental partners continue to prioritize the continuation of essential health services.

CHALLENGES

- Lack of isolation units and facilities for cases detected in boarding schools and police holding cells.

RECOMMENDATIONS

- Establish fully equipped isolation units and facilities for cases detected in schools and police holding cells.

APPROVED

INCIDENT MANAGER
05 MAY 2021

SECRETARIAT

For enquiries, please contact
Namibia Public Health Emergency Operations Centre;
PHEOC@mhss.gov.na
 0800 100 100
 0851 100 100