



NAMIBIA COVID-19 SITUATION REPORT NO. 368

Outbreak Name	COVID-19 outbreak	Country affected	Namibia
Date & Time	21.03.2021 17h00	Investigation start Date	13 March 2020
Prepared by	Surveillance Team		

HIGHLIGHTS/SITUATION UPDATE (21/03/2021)

TOTAL

Tested 331674

Confirmed 42653

Active 2645

Recovered 39504

Death 494

TODAY

Tested 1498

Confirmed 176

Active 2645

Recovered 154

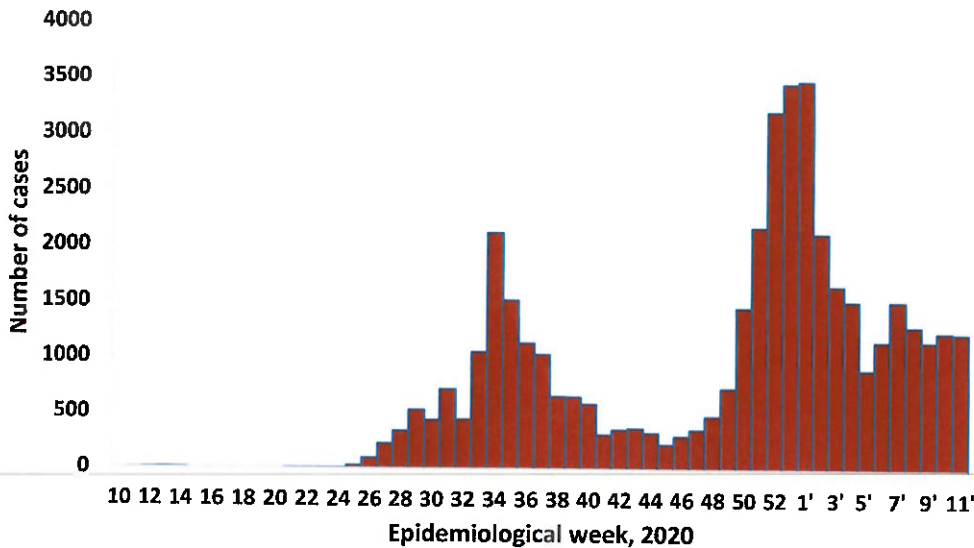
Death 2

- A total of **42653** cases have been recorded to-date, representing **2%** of the population.
- More male cases **21543 (51%)** were recorded compared to female cases **21110 (49%)**.
- Of the total confirmed cases, **1910 (4%)** are Health Workers (HWs).
 - 1502 (79%) State; 404 (21%) Private, 4 (0.2%) Non-Governmental Organizations.
 - 1885 (99%) recoveries and 6 (0.3%) deaths.
- The recovery rate now stands at **93%**.
- All fourteen (14) regions have reported confirmed cases; *Khomas and Erongo* regions reported the highest with **15978 (37%)** and **7833 (18%)** respectively.
- Of the total fatalities, **398 (81%)** are COVID-19 deaths while **96 (19%)** are COVID-19 related deaths.

Table 1: Distribution of confirmed COVID-19 cases by region, 21 March 2021

Region	Total No. of cases	Active cases	Recoveries	Cumulative Deaths	Cumulative deaths with co-morbidities	Non-COVID deaths	Health Workers
Erongo	7833	344	7386	98	94	5	207
Hardap	1800	118	1657	25	19	0	52
//Kharas	2669	83	2552	34	29	0	120
Kavango East	1691	312	1358	21	16	0	102
Kavango West	181	13	166	2	2	0	10
Khomas	15978	385	15418	175	159	0	784
Kunene	1057	86	960	11	11	0	53
Ohangwena	1067	64	987	14	11	2	52
Omaheke	997	63	922	12	9	0	44
Omusati	1151	12	1131	8	5	0	31
Oshana	2720	336	2352	30	20	1	210
Oshikoto	2380	228	2138	13	13	2	112
Otjozondjupa	2467	269	2157	41	31	0	98
Zambezi	662	332	320	10	7	0	35
Total	42653	2645	39504	494	426	10	1910

EPIDEMIOLOGICAL SITUATION IN NAMIBIA



➤ A highest peak of **3485 (8%)** cases was recorded during week 1 in 2021 (Figure 2).

Figure 1: Epi-curve for confirmed COVID-19 cases, 21 March 2021

- Of the total confirmed cases, **27605 (65%)** are in the 20-49 years age-brackets which constitutes the majority of the recorded cases.
- A total of **6976 (16%)** of the confirmed cases are among the 5-19 years category.
- The under 5 years age group make up **969 (2%)** of the total cases whereas, **2702 (6%)** are above 60 years of age.

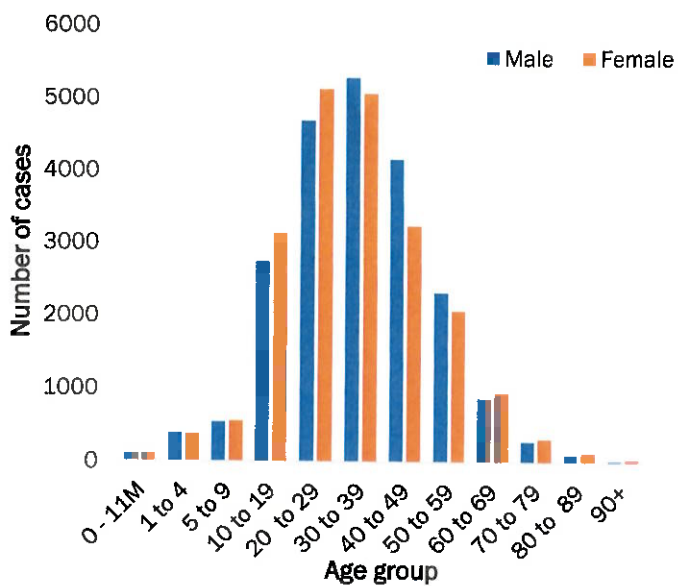


Figure 2: Age and Sex distribution of COVID-19 confirmed cases 21 March 2021

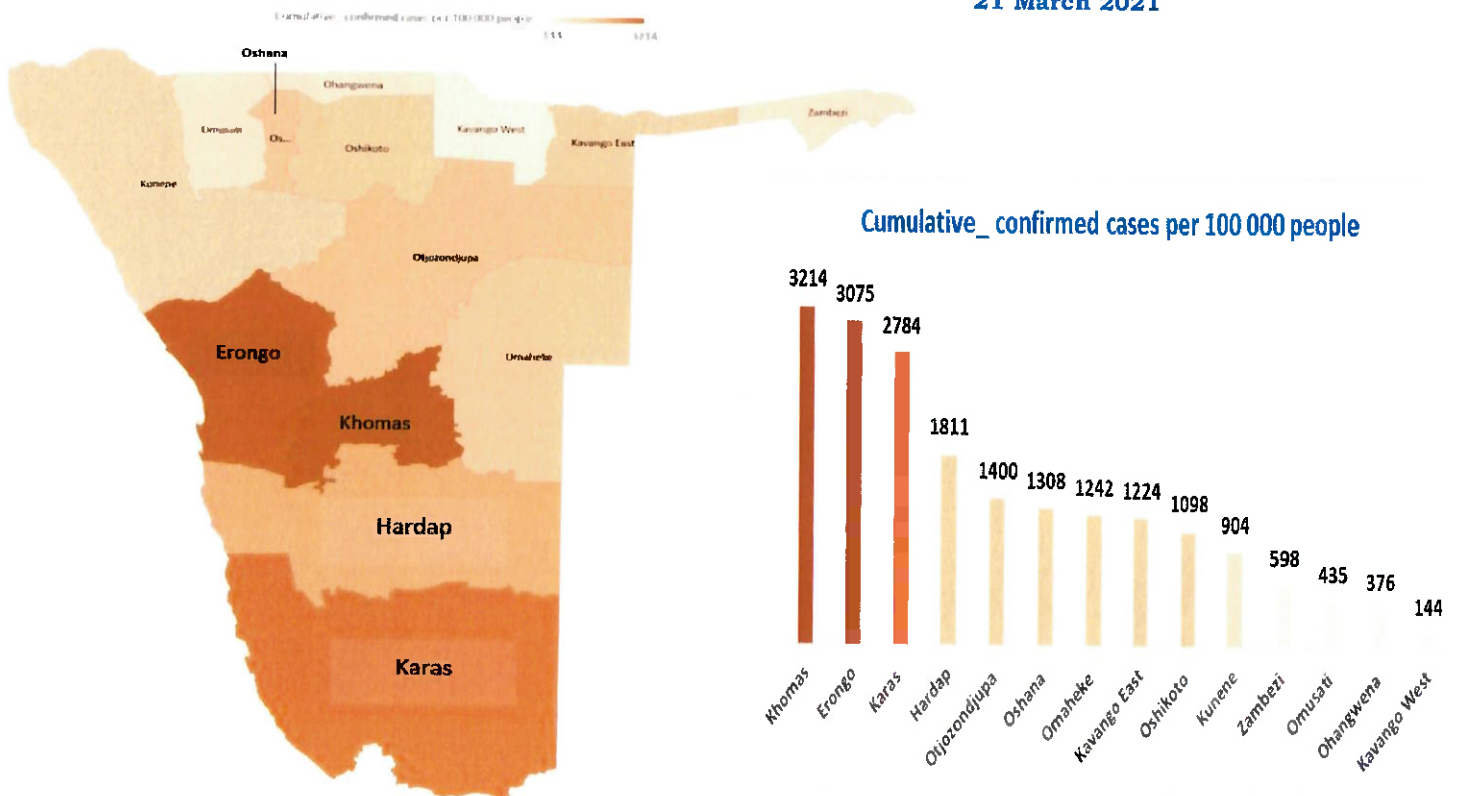


Figure 3: Distribution of cumulative confirmed cases per 100 000 by region, 21 March 2021

Table 2: COVID-19 specimen recorded at the Laboratories, 21 March 2021

- To date, **331674** tests (including **11724** re-tests) have been conducted by NIP, Path-Care, NAMDEB, UNAM, Namib Poultry, Diagno, NAMPPath, Namibia Central Pathology and Central Veterinary laboratories
- Since the beginning of the outbreak, **77212** contacts of confirmed cases have been identified, **202** new contacts were identified within the last 24 hours from 8 regions.
- Cumulatively, **72178** contacts have completed their monitoring period, while a total of **10564 (25%)** contacts of confirmed cases have tested positive.
- Today, **129 (3%)** out of **4770** active contacts monitored.

VARIABLES	TOTAL
Total samples received by the Laboratory	331791
Total samples tested	319950
Total samples re-tested	11724
Total positive results	42653
Total negative results	277244
Total samples discarded	117
Invalid results	0
Total pending results	46
Indeterminant/Inconclusive	7
Suspected cases in 24 hours (excludes re-tests)	1494

Table 3: Number of people in mandatory quarantine facilities, 21 March 2021

Region	Newly quarantined 24 Hrs.	Cumulative number	Number discharged	Number in quarantine now
Erongo	0	5193	5163	30
Hardap	7	1503	1492	11
Kavango	0	1265	1211	54
Khomas	0	3364	3354	10
//Kharas	28	5185	4797	388
Kunene	0	3939	3506	433
Ohangwena	0	690	690	0
Omaheke	0	4729	4450	279
Omusati	0	553	553	0
Oshana	0	400	400	0
Oshikoto	0	10305	9617	
Otjozondjupa	0	1403	1388	15
Zambezi	0	1436	1405	31
Total	35	39965	38026	1939

- Since March 2020, **39965** people have been placed into mandatory quarantine facilities around the country.
- A total of **1939** people are currently in quarantine, with **35** new admissions.

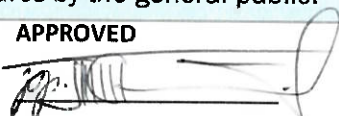
PUBLIC HEALTH ACTION (S)

- Honourable Minister of Health and Social Services launched a national COVID-19 vaccination programme in Windhoek.
- The government and developmental partners continue to prioritise the continuation of essential health services.

CHALLENGES

- Lack of isolation units and facilities for cases detected in boarding schools.
- Non-adherence to COVID-19 prevention measures by the general public.

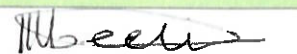
APPROVED






INCIDENT MANAGER
21 MARCH 2021

RECOMMENDATIONS

- Establish fully equipped isolation units and facilities for cases in schools.
- Continue to give awareness on the importance of adhering to COVID -19 prevention measures; with the involvement of the Security Cluster.



SECRETARIAT

For enquiries, please contact
Namibia Public Health Emergency Operations Centre;
 PHEOC@mhss.gov.na
 0800 100 100
 0851 100 100