



NAMIBIA COVID-19 SITUATION REPORT NO. 285

| | | | |
|------------------------|---------------------|---------------------------------|---------------|
| Outbreak Name | COVID-19 outbreak | Country affected | Namibia |
| Date & Time | 28.12.2020 17h00 | Investigation start Date | 13 March 2020 |
| Prepared by | Surveillance Team | | |

HIGHLIGHTS/SITUATION UPDATE (28 /12/2020)

- A total of **22851** cases have been recorded to-date, representing **0.9%** of the population.
- More male cases **11869 (51.9%)** were recorded compared to female cases **10982 (48.1%)**.
- Of the total confirmed cases, **1004 (4.4%)** Health Workers (HWs) have tested positive for COVID-19 to-date.
 - 730 (72.7%) State; 270 (26.9%) Private, 4 (0.4%) Non-Governmental Organizations.
 - 747 (74.4%) recoveries and 3 (0.3%) deaths.

TODAY

Tested 2238

Confirmed 564

Active 3910

Recovered 466

Death 2

TOTAL

Tested 202389

Confirmed 22851

Active 3910

Recovered 18743

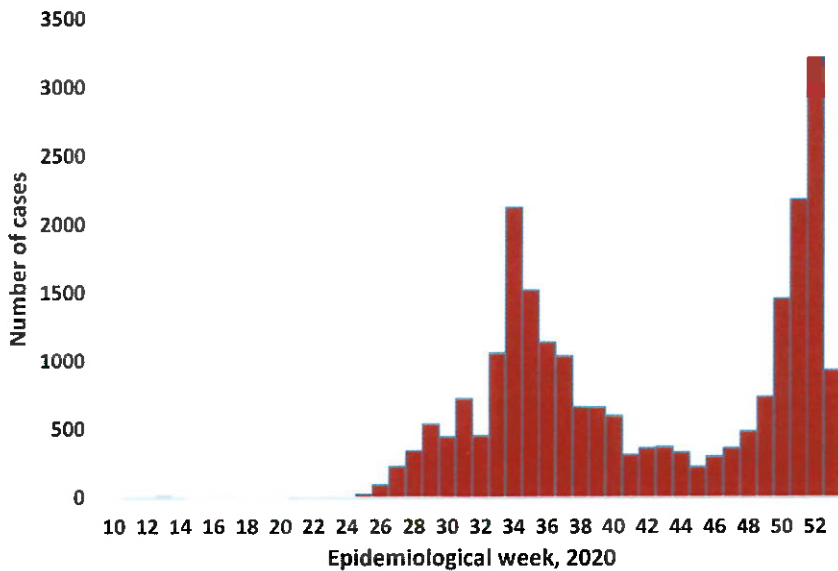
Death 195

- The recovery rate now stands at **82%**.
- All fourteen (14) regions have reported confirmed cases; Khomas and Erongo regions reported the highest with **11073 (48.5%)** and **5213 (22.8%)** respectively.
- Of the total fatalities, **151 (77.4%)** are COVID-19 deaths while **44 (22.6%)** are COVID-19 related

Table 1: Distribution of confirmed COVID-19 cases by region, 28 December 2020

| Region | Total No. of cases | Active cases | Recoveries | Cumulative Deaths | Deaths in 24 hours | Cumulative deaths with co-morbidities | Non-COVID deaths | Health Workers |
|--------------|--------------------|--------------|--------------|-------------------|--------------------|---------------------------------------|------------------|----------------|
| Erongo | 5213 | 653 | 4510 | 49 | 1 | 46 | 1 | 116 |
| Hardap | 961 | 134 | 820 | 7 | 0 | 5 | 0 | 28 |
| //Kharas | 1250 | 319 | 924 | 7 | 0 | 5 | 0 | 53 |
| Kavango East | 302 | 60 | 239 | 3 | 0 | 2 | 0 | 27 |
| Kavango West | 13 | 5 | 7 | 1 | 0 | 1 | 0 | 1 |
| Khomas | 11073 | 1605 | 9374 | 94 | 1 | 89 | 0 | 549 |
| Kunene | 403 | 286 | 114 | 3 | 0 | 3 | 0 | 27 |
| Ohangwena | 282 | 23 | 256 | 2 | 0 | 0 | 1 | 12 |
| Omaheke | 229 | 42 | 182 | 5 | 0 | 4 | 0 | 11 |
| Omusati | 187 | 52 | 132 | 3 | 0 | 2 | 0 | 11 |
| Oshana | 1258 | 350 | 897 | 11 | 0 | 9 | 0 | 92 |
| Oshikoto | 654 | 153 | 499 | 1 | 0 | 1 | 1 | 27 |
| Otjozondjupa | 913 | 200 | 705 | 8 | 0 | 5 | 0 | 35 |
| Zambezi | 113 | 28 | 84 | 1 | 0 | 1 | 0 | 15 |
| Total | 22851 | 3910 | 18743 | 195 | 2 | 173 | 3 | 1004 |

EPIDEMIOLOGICAL SITUATION IN NAMIBIA



- A highest peak of **3209 (14.0%)** cases was recorded during week 52 (Figure 1).
- The National Call center continues operation for 24 hours daily.

Today (28/12/2020) **958** calls were answered including **76** alerts.

Figure 1: Epi-curve for confirmed COVID-19 cases, As of 28 December 2020

Table 2: COVID-19 specimen recorded at the Laboratories As of 28 December 2020

| VARIABLES | TOTAL |
|---|--------|
| Total samples received by the Laboratory | 202507 |
| Total samples tested | 194079 |
| Total samples re-tested | 8310 |
| Total positive results | 22851 |
| Total negative results | 171172 |
| Total samples discarded | 117 |
| Invalid results | 1 |
| Total pending results | 0 |
| Indeterminant/Inconclusive | 56 |
| Suspected cases in 24 hours (excludes re-tests) | 2043 |

- To date, **202389** tests (including **8310** re-tests) have been conducted by NIP, Path-Care, NAMDEB, UNAM, Namib Poultry and Central Veterinary laboratories.
- Since the beginning of the outbreak, **46383** contacts of confirmed cases have been identified, **383** new contacts were identified within the last 24 hours from 9 regions.
- Cumulatively, **40027** contacts have completed their monitoring period, while a total of **5334 (23.3%)** contacts of confirmed cases have tested positive.
- Today, **5870 (97.1%)** out of **6044** active contacts monitored.

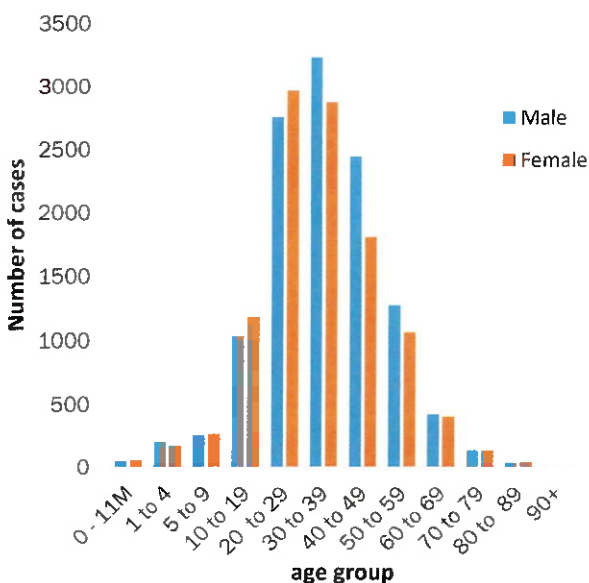


Figure 2: Age and Sex distribution of COVID-19 confirmed cases, as of 28 December 2020

- Of the total confirmed cases, **16080 (70.4%)** are in the 20-49 years age-brackets which constitutes the majority of the recorded cases.
- A total of **2741 (12.0%)** of the confirmed cases are among the 5-19 years category.
- The under 5 years age group make **490 (2.1%)** of the total cases whereas, **1204 (5.3%)** are above 60 years of age.

Table 3: Number of people in mandatory quarantine facilities, 28 December 2020

| Region | Newly quarantined 24 Hrs. | Cumulative number | Number discharged | Number in quarantine now | Truck Drivers quarantined in 24 hrs. |
|--------------|---------------------------|-------------------|-------------------|--------------------------|--------------------------------------|
| Erongo | 14 | 4491 | 4436 | 55 | 0 |
| Hardap | 8 | 1067 | 1012 | 55 | 0 |
| Kavango | 0 | 906 | 886 | 20 | 0 |
| Khomas | 3 | 3066 | 3042 | 24 | 0 |
| //Kharas | 0 | 3897 | 3791 | 106 | 0 |
| Kunene | 48 | 1658 | 1182 | 476 | 0 |
| Ohangwena | 0 | 575 | 570 | 5 | 0 |
| Omaheke | 21 | 2054 | 1895 | 159 | 0 |
| Omusati | 1 | 481 | 464 | 17 | 0 |
| Oshana | 0 | 378 | 371 | 7 | 0 |
| Oshikoto | 130 | 3828 | 3379 | 449 | 0 |
| Otjozondjupa | 0 | 1032 | 1032 | 0 | 0 |
| Zambezi | 6 | 1207 | 1169 | 38 | 0 |
| Total | 231 | 24640 | 23229 | 1411 | 0 |

➤ Since March 2020, **24640** people have been placed into mandatory quarantine facilities around the country.

➤ A total of **1411** people are currently in quarantine, with **231** new admissions.

PUBLIC HEALTH ACTION(S)

- Public awareness on COVID-19 prevention measures is ongoing.
- The government and developmental partners continue to prioritise continuation of essential health services.

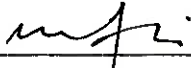
CHALLENGES

- Lack of isolation units and facilities in the regions.
- Non-adherence to COVID-19 prevention measures by the general public.

RECOMMENDATIONS

- Establish fully equipped isolation units and facilities throughout the country.
- Continue to give awareness on the importance of adhering to COVID -19 prevention measures; with the involvement of the Security Cluster.

Approved


 Incident Manager
 28 December 2020


 Secretariat

For enquiries, please contact
Namibia Public Health Emergency Operations Centre:

 PHEOC@mhss.gov.na
 0800 100 100
 0851 100 100