



NAMIBIA COVID-19 SITUATION REPORT NO. 269

Outbreak Name	COVID-19 outbreak	Country affected	Namibia
Date & Time	12.12.2020 17h00	Investigation start Date	13 March 2020
Prepared by	Surveillance Team		

HIGHLIGHTS/SITUATION UPDATE (12/12/2020)

TOTAL
Tested 173869
Confirmed 16536
Active 1689
Recovered 14684
Death 160

TODAY
Tested 1723
Confirmed 267
Active 1689
Recovered 102
Death 0

- Today, a highest number of **25** Health-Care Workers were recorded to have contracted COVID-19.
- A total of **16536** cases have been recorded to-date, representing **0.7%** of the population.
- More male cases **8910 (53.9%)** were recorded compared to female cases **7626 (46.1%)**.
- Of the total confirmed cases, **666 (4.0%)** Health Workers (HWs) have tested positive for COVID-19 to-date.
 - 450 (67.6%) State; 212 (31.8%) Private, 4 (0.6%) Non-Governmental Organizations.
 - 530 (79.6%) recoveries and 3 (0.5%) deaths.
- The recovery rate now stands at **88.8%**.
- All fourteen (14) regions have reported confirmed cases; Khomas and Erongo regions reported the highest with **7765 (47.0%)** and **4316 (26.1%)** respectively.
- Of the total fatalities, **120 (75%)** are COVID-19 deaths while **40 (25%)** are COVID-19 related deaths.

Table 1: Distribution of confirmed COVID-19 cases by region, 12 December 2020

Region	Total No. of cases	Active cases	Recoveries	Deaths	Deaths in 24 hours	Cumulative deaths with co-morbidities	Non-COVID deaths	Health Workers
Erongo	4316	193	5080	42	0	39	1	81
Hardap	784	32	745	7	0	5	0	23
//Kharas	834	232	596	6	0	4	0	27
Kavango East	236	25	208	3	0	2	0	24
Kavango West	8	0	7	1	0	1	0	1
Khomas	7765	910	6777	78	0	74	0	396
Kunene	79	42	35	2	0	1	0	4
Ohangwena	238	5	230	2	0	0	1	7
Omaheke	158	11	143	4	0	3	0	6
Omusati	89	5	83	1	0	0	0	6
Oshana	914	80	825	9	0	8	0	45
Oshikoto	480	23	456	0	0	0	1	11
Otjozondjupa	551	129	417	5	0	4	0	21
Zambezi	84	2	82	0	0	0	0	14
Total	16536	1689	14684	160	0	141	3	666

EPIDEMIOLOGICAL SITUATION IN NAMIBIA

Table 2: Number of people in mandatory quarantine facilities, 12 December 2020

Region	Newly quarantined 24 Hrs.	Cumulative number	Number discharged	Number in quarantine now	Truck Drivers quarantined in 24 hrs.
Erongo	45	4422	4251	171	6
Hardap	0	959	950	9	0
Kavango	0	834	815	19	0
Khomas	0	2944	2930	14	0
//Kharas	0	2928	2914	14	0
Kunene	24	1000	853	147	0
Ohangwena	0	575	570	5	0
Omaheke	0	1762	1735	27	0
Omusati	6	443	429	14	0
Oshana	0	365	365	0	0
Oshikoto	0	3102	2843	259	0
Otjozondjupa	0	981	980	1	0
Zambezi	0	1089	1073	16	0
Total	75	21404	20708	696	6

➤ Since March 2020, **21404** people have been placed into mandatory quarantine facilities around the country.

➤ A total of **696** people are currently in quarantine, with **75** new admissions in the last 24 hours.

➤ A highest peak of **2123 (12.8%)** cases was recorded during week 34 (Figure 1).

➤ The National Call center continues operation for 24 hours daily.

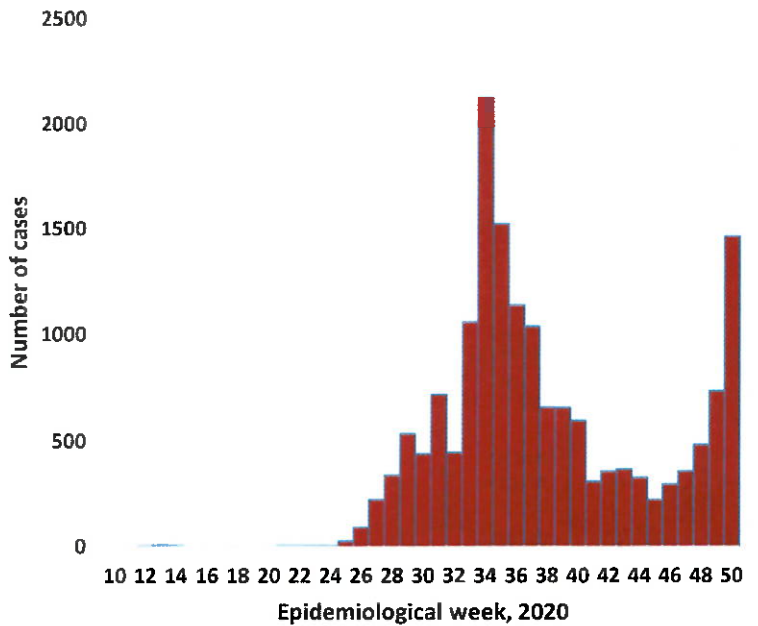


Figure 1: Epi-curve for confirmed COVID-19 cases As of 12 December 2020

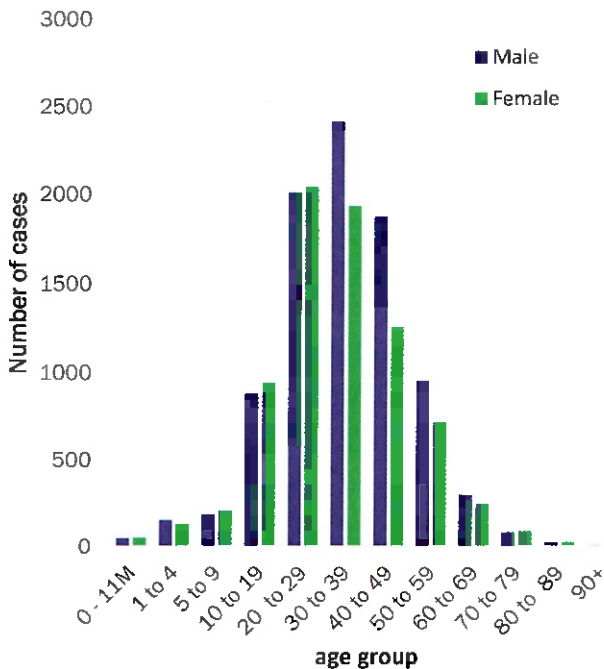


Figure 2: Age and Sex distribution of COVID-19 confirmed cases, as of 12 December 2020

➤ Of the total confirmed cases, **11520 (69.7%)** are in the 20-49 years age-brackets which constitutes the majority of the recorded cases.

➤ A total of **2210 (13.4%)** of the confirmed cases are among the 5-19 years category.

➤ The under 5 years age group make **379 (2.3%)** of the total cases whereas, **768 (4.6%)** are above 60 years of age.

Table 3: COVID-19 specimen recorded at the Laboratories, As of 12 December 2020

VARIABLES	TOTAL
Total samples received by the Laboratory	173987
Total samples tested	166661
Total samples re-tested	7208
Total positive results	16536
Total negative results	150073
Total samples discarded	117
Invalid results	1
Total pending results	0
Indeterminant/Inconclusive	52
Suspected cases in 24 hours (excludes re-tests)	1707

- To date, **173869** tests (including **7208** re-tests) have been conducted by NIP, Path-Care, NAMDEB, UNAM and Namib Poultry laboratories.
- Since the beginning of the outbreak, **39634** contacts of confirmed cases have been identified, **601** new contacts were identified within the last 24 hours from 9 regions.
- Cumulatively, **36410** contacts have completed their monitoring period, while a total of **4624 (28.0%)** contacts of confirmed cases have tested positive.
- Today, **3662 (100%)** out of **3662** active contacts monitored.

PUBLIC HEALTH ACTION(S)

- Virtual training on Integrated Disease Surveillance Response (IDSR) is ongoing country-wide.
- Public awareness on COVID-19 prevention measures is ongoing.
- The government and developmental partners continue to prioritise continuation of essential health services.

CHALLENGES

- Lack of isolation units and facilities in the country for special cases in closed settings such as schools, police holding cells and prisons.

RECOMMENDATIONS


- Establish fully equipped isolation units and facilities for identified special cases throughout the country.

Approved



 Incident Manager

12 December 2020



 Secretariat

For enquiries, please contact
 Namibia Public Health Emergency Operations Centre:

 PHEOC@mhss.gov.na
 0800 100 100
 0851 100 100