



## NAMIBIA COVID-19 SITUATION REPORT NO. 243

Outbreak Name	COVID-19 outbreak	Country affected	Namibia
Date & Time	16.11.2020 17h00	Investigation start Date	13 March 2020
Prepared by	Surveillance Team		

### HIGHLIGHTS/SITUATION UPDATE (16/11/2020)

TOTAL	TODAY
Tested 141283	Tested 545
Confirmed 13566	Confirmed 11
Active 284	Active 284
Recovered 13140	Recovered 297
Death 140	Death 2

- A total of **13566** cases have been recorded to-date, representing **0.5%** of the population.
- More male cases **7454 (54.9%)** were recorded compared to female cases **6112 (45.0%)**.
- Of the total confirmed cases, **534 (3.9%)** Health Workers (HWs) have tested positive for COVID-19 to-date.
  - 348 (65.2%) State; 183 (34.3%) Private, 3 (0.6%) Non-Government Organisations.
  - 280 (53.3%) recoveries and 3 (0.6%) deaths.
- The recovery rate now stands at **96.9%**.
- All fourteen (14) regions have reported confirmed cases; Khomas and Erongo regions reported the highest with **6053 (44.6%)** and **3988 (29.4%)** respectively.
- Of the total fatalities, **108 (77.1%)** are COVID-19 deaths while **32 (22.9%)** are COVID-19 related deaths.

Table 1: Distribution of confirmed COVID-19 cases by region, 16 November 2020

Region	Total No. of cases	Active cases	Recoveries	Deaths	Deaths in 24 hours	Cumulative deaths with co-morbidities	Non-COVID deaths	Health Workers
Erongo	3988	25	3921	41	1	38	1	70
Hardap	699	75	619	5	0	2	0	23
//Kharas	440	24	411	5	0	4	0	14
Kavango East	213	26	184	3	0	2	0	21
Kavango West	8	0	7	1	0	1	0	1
Khomas	6053	62	5922	69	1	66	0	341
Kunene	37	2	35	0	0	0	0	0
Ohangwena	220	1	216	2	0	0	1	6
Omaheke	122	5	114	3	0	2	0	4
Omusati	74	6	67	1	0	0	0	6
Oshana	796	43	748	5	0	4	0	15
Oshikoto	444	9	435	0	0	0	0	7
Otjozondjupa	391	6	380	5	0	4	0	14
Zambezi	81	0	81	0	0	0	0	12
<b>Total</b>	<b>13566</b>	<b>284</b>	<b>13140</b>	<b>140</b>	<b>2</b>	<b>123</b>	<b>2</b>	<b>534</b>



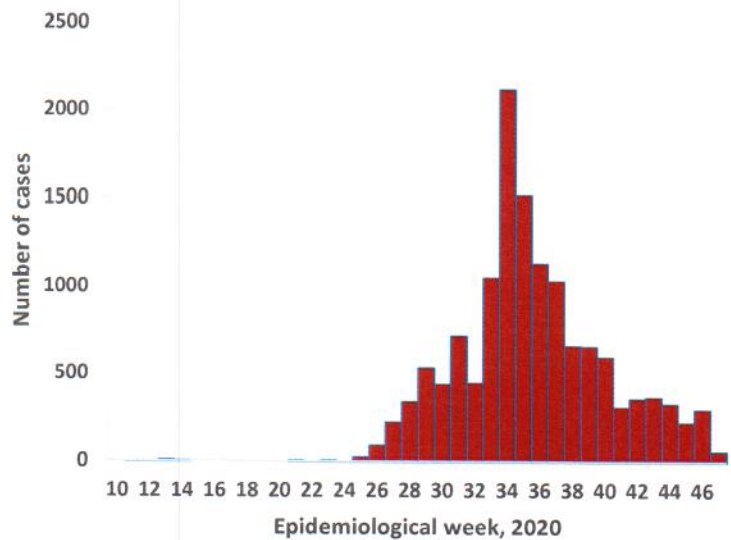
## EPIDEMIOLOGICAL SITUATION IN NAMIBIA

**Table 2: COVID-19 specimen recorded at the Laboratories**  
As of 16 November 2020

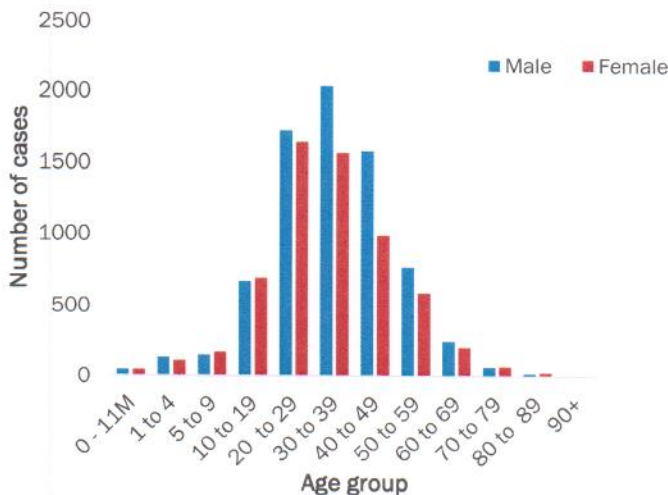
VARIABLES	TOTAL
Total samples received by the Laboratory	141401
Total samples tested	134680
Total samples re-tested	6603
Total positive results	13566
Total negative results	121064
Total samples discarded	117
Invalid results	1
Total pending results	0
Indeterminant/Inconclusive	50
Suspected cases in 24 hours (excludes re-tests)	539

- To date, **141283** tests (including **6603** re-tests) have been conducted by NIP, Path-Care, NAMDEB, UNAM and Namib Poultry laboratories.
- Since the beginning of the outbreak, **34173** contacts of confirmed cases have been identified, **869** new contacts were identified within the last 24 hours from 11 regions.
- Cumulatively, **31651** contacts have completed their monitoring period, while a total of **4238 (30.3%)** contacts of confirmed cases have tested positive.
- Today, **2516 (96.4%)** out of **2609** active contacts were monitored.

- A highest peak of **2123 (15.6%)** cases was recorded during week 34 (Figure 1).
- After a peak in epi-week 34, the country has seen a gradual reduction in the average number of confirmed cases to 32 in epi-week 45.
- The number of cases have plateaued in the last four weeks as seen in the graph.
- The National Call center continues operation for 24 hours daily. Today (16/11/2020), **660** calls were answered including **65** alerts.



**Figure 1: Epi-curve for confirmed COVID-19 cases as of 16 November 2020**



**Figure 2: Age and Sex distribution of COVID-19 confirmed cases, as of 16 November 2020**

- Of the total confirmed cases, **9542 (70.3%)** are in the 20-49 years age-brackets which constitutes the majority of the recorded cases.
- A total of **1695 (12.5%)** of the confirmed cases are among the 5-19 years category.
- The under 5 years age group make up **334 (2.5%)** of the total cases whereas, **629 (4.6%)** are above 60 years of age.



**Table 3: Number of people in mandatory quarantine facilities, 16 November 2020**

Region	Newly quarantined 24 Hrs.	Cumulative number	Number discharged	Number in quarantine now	Truck Drivers quarantined in 24 hrs.
Erongo	0	4123	3969	154	0
Hardap	7	884	846	38	0
Kavango	0	723	711	12	0
Khomas	0	2868	2801	67	0
//Kharas	0	2919	2901	18	0
Kunene	0	793	793	0	0
Ohangwena	0	558	553	5	0
Omaheke	27	1563	1512	51	0
Omusati	0	404	386	18	0
Oshana	0	359	355	4	0
Oshikoto	0	2451	2384	67	0
Otjozondjupa	0	964	964	0	0
Zambezi	0	978	966	12	0
<b>Total</b>	<b>34</b>	<b>19587</b>	<b>19141</b>	<b>446</b>	<b>0</b>

➤ Since March 2020, **19587** people have been placed into mandatory quarantine facilities around the country.

➤ A total of **446** people are currently in quarantine, with **34** new admissions in the last 24 hours.

**PUBLIC HEALTH ACTION(S)**

- Support visit and Intra action review on COVID-19 response is ongoing across all regions.
- Virtual training on Integrated Disease Surveillance Response (IDSR) is ongoing country-wide.
- Public awareness on COVID-19 prevention measures is ongoing.
- The government and developmental partners continue to prioritise continuation of essential health services.


**CHALLENGES**

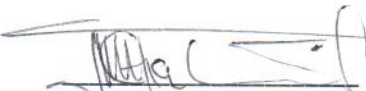
- Lack of isolation units and facilities in the country for special cases in closed settings such as police holding cells and prisons.

**RECOMMENDATIONS**


- Establish fully equipped isolation units and facilities for identified special cases throughout the country.


Approved


  
 Incident Manager  
 16 November 2020

  
 Secretariat

For enquiries, please contact  
**Namibia Public Health Emergency Operations Centre;**

 [PHEOC@mhss.gov.na](mailto:PHEOC@mhss.gov.na)

 0800 100 100

 0851 100 100