

Coronavirus disease (COVID-19)

Situation Report – 134

Data as received by WHO from national authorities by 10:00 CEST, 02 June 2020

Highlights

During the 1 June media briefing, WHO Director-General Dr Tedros highlighted that the COVID-19 pandemic has led to disruptions in services for treatment of non-communicable diseases in many countries. [The COVID-19 response must be inclusive of the healthcare needs of people living with these diseases.](#)

WHO has published a new operational guidance on [maintaining essential health services](#), which provides recommendations for practical actions that countries can take at national, sub-regional and local levels to reorganize and safely maintain access to high-quality, essential health services during the pandemic.

Transporting COVID-19 medical supplies to those in need requires timely decision-making and trouble-shooting skills. The Regional Office for the Eastern Mediterranean document [a week in the life of logistics expert](#) coordinating massive shipments of medical supplies to Yemen.

WHO's support to countries in securing medical products for COVID-19 treatment is highlighted in the '[Subject in Focus](#)' below.

Situation in numbers (by WHO Region)

Total (new cases in last 24 hours)

Globally	6 194 533 cases (113 198)	376 320 deaths (4 242)
Africa	108 121 cases (3 879)	2 700 deaths (62)
Americas	2 905 432 cases (64 718)	163 248 deaths (1 820)
Eastern Mediterranean	536 148 cases (16 011)	12 899 deaths (272)
Europe	2 175 941 cases (16 150)	182 416 deaths (1 824)
South-East Asia	283 845 cases (11 333)	8 000 deaths (257)
Western Pacific	184 305 cases (1 107)	7 044 deaths (7)

Subject in Focus: WHO assists vulnerable countries in securing medical oxygen products for COVID-19 treatment

WHO Operations Support and Logistics (OSL) is engaged in discussions with oxygen manufacturers and private sector stakeholders through the Pandemic Supply Chain Network (PSCN) – an informal network of companies in the private sector that are collaborating with WHO to provide market insight and facilitate communications with the private sector to gain access to medical products for the COVID-19 response.

Amidst an acute global shortage of oxygen therapy supplies required for severe cases of COVID-19, WHO's OSL team is also working through a bio-medical purchasing consortium to assist the most vulnerable countries with underfunded health systems in accessing the market for medical oxygen.

Ongoing talks with suppliers in recent weeks have enabled WHO to procure 4000 oxygen concentrators, which are a key component in critical care for patients with severe cases of COVID-19. The first batch of 2000 has arrived in a WFP warehouse in Shenzhen and will be shipped to 41 countries, pending customs clearance and shipping documentation.

In addition to this initial procurement, an additional 10 000 concentrators and 9820 pulse oximeters were been purchased on 29 May, and will be distributed to more than 120 countries.

WHO, in collaboration with WFP and the Government of Ghana, is engaging with oxygen producers to equip a 68-bed field hospital in Accra scheduled for completion on 4 June to provide COVID-19 treatment and medical evacuation services.

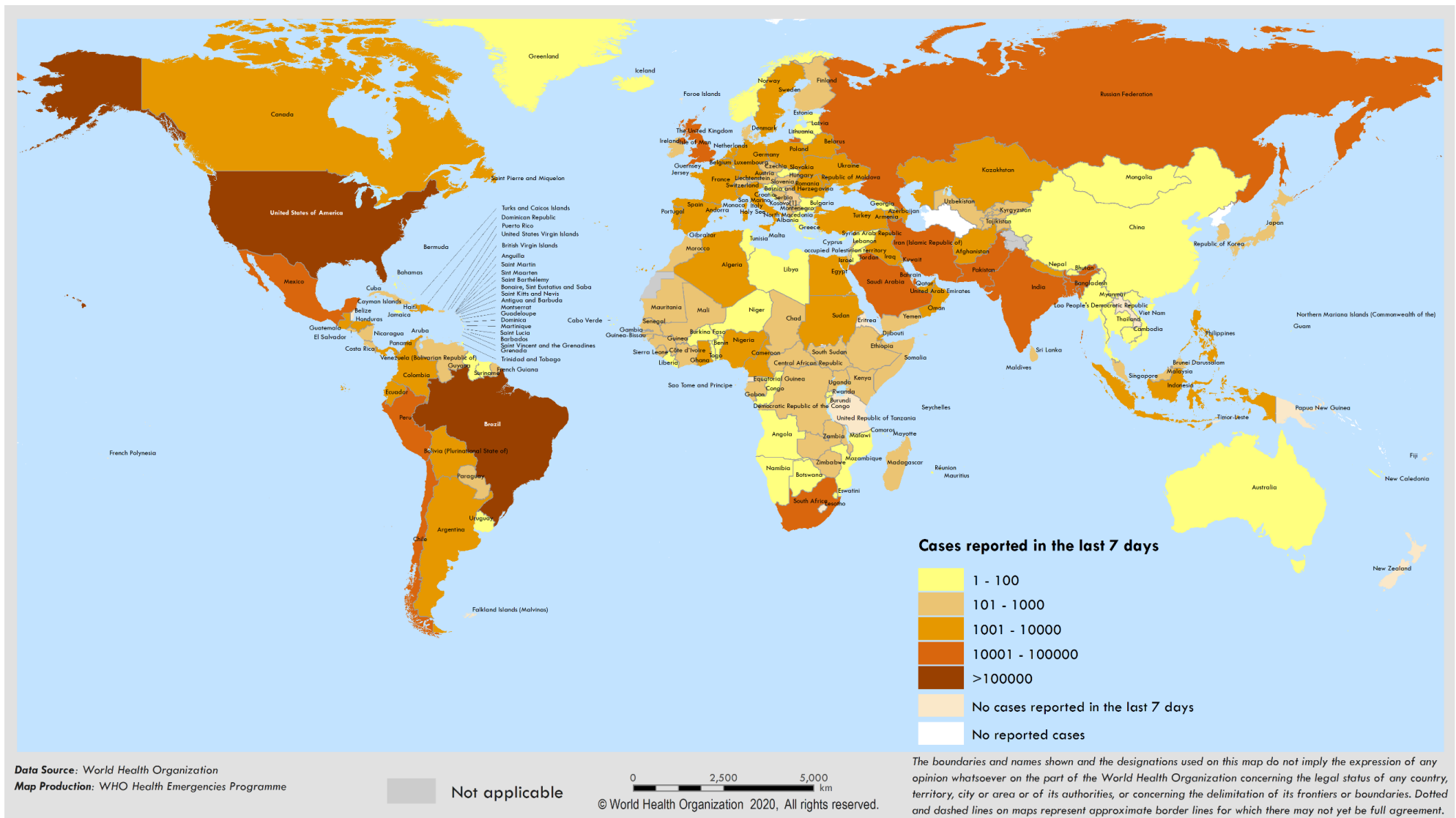
WHO is engaged with additional oxygen support initiatives, including:

- Providing technical guidance and validation to three PSA oxygen generator plants to Somalia.
- Providing technical guidance and potential procurement of PSA oxygen generator plant and oxygen cylinders for South Sudan.
- Collaborating with UNICEF Sierra Leone on the design and procurement of three PSA oxygen generator plants for health facilities in rural areas of Sierra Leone.

WHO has launched on [OpenWHO](#) a Clinical Care Training course for the management of patients with Severe Acute Respiratory Infection (SARI). More than 100 000 people have enrolled for the training course, currently available in eight languages.

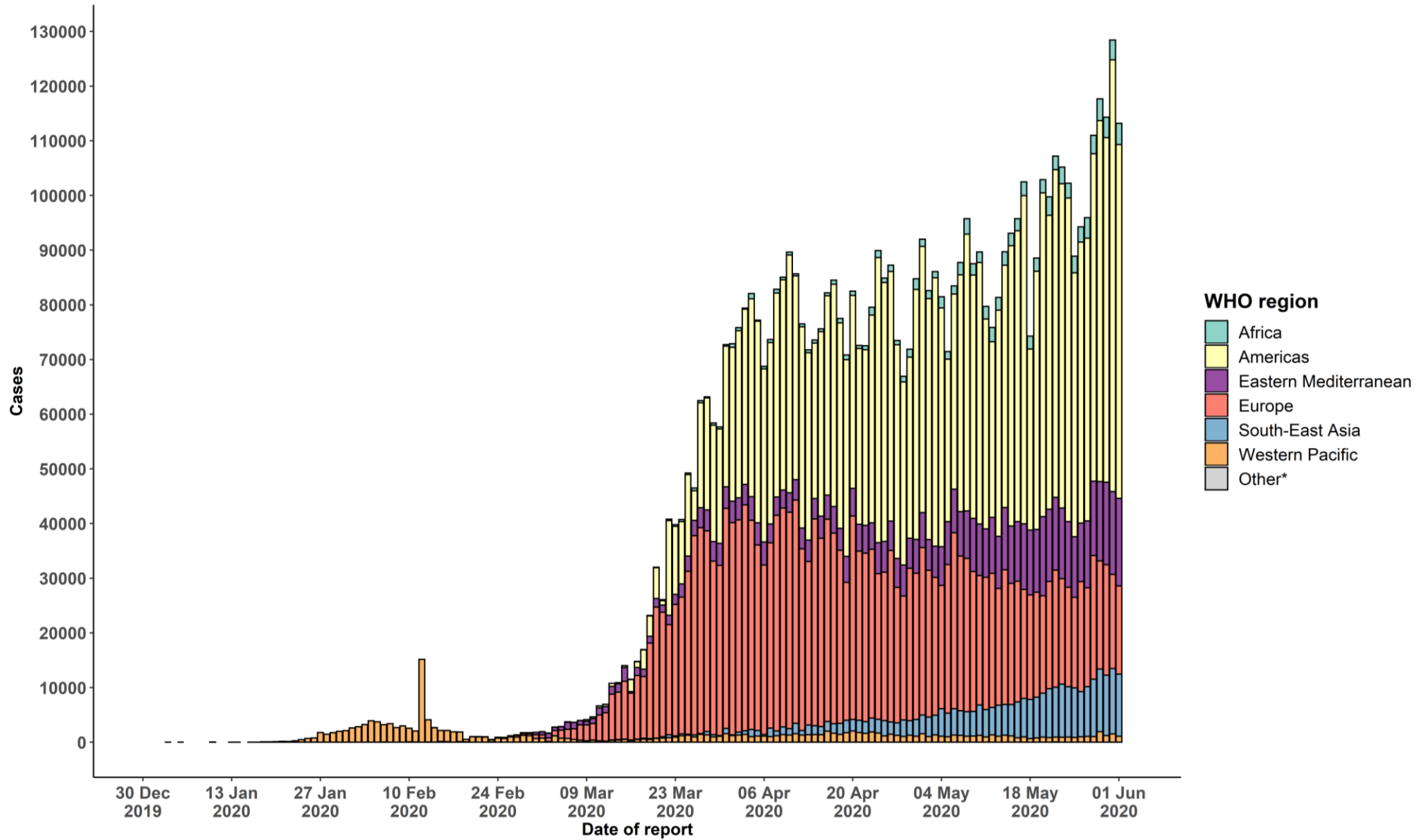
Surveillance

Figure 1. Number of confirmed COVID-19 cases reported in the last seven days by country, territory or area, 27 May to 02 June**



**See [Annex 1](#) for data, table and figure notes.

Figure 2. Number of confirmed COVID-19 cases, by date of report and WHO region, 30 December 2019 through 02 June 2020**



**See [Annex 1](#) for data, table and figure notes.

Table 1. Countries, territories or areas with reported laboratory-confirmed COVID-19 cases and deaths, by WHO region. Data as of 10 AM CEST, 02 June 2020**

Reporting Country/ Territory/Area	Total confirmed cases	Total confirmed new cases	Total deaths	Total new deaths	Transmission classification ¹	Days since last reported case
Africa						
South Africa	34 357	1 674	705	22	Community transmission	0
Nigeria	10 578	416	299	12	Community transmission	0
Algeria	9 513	119	661	8	Community transmission	0
Ghana	8 070	189	36	0	Community transmission	0
Cameroon	6 397	493	199	8	Community transmission	0
Guinea	3 844	73	23	0	Community transmission	0
Senegal	3 739	94	42	0	Community transmission	0
Democratic Republic of the Congo	3 194	146	71	0	Community transmission	0
Côte d'Ivoire	2 951	118	33	0	Community transmission	0
Gabon	2 655	0	17	0	Community transmission	1
Kenya	2 021	59	69	5	Community transmission	0
Guinea-Bissau	1 339	17	8	0	Community transmission	0
Mali	1 315	50	78	1	Community transmission	0
Ethiopia	1 257	85	12	1	Clusters of cases	0
Zambia	1 089	32	7	0	Community transmission	0
Central African Republic	1 069	58	4	2	Clusters of cases	0
Equatorial Guinea	1 043	0	12	0	Community transmission	9
South Sudan	994	0	10	0	Clusters of cases	4
Niger	958	0	64	0	Community transmission	1
Burkina Faso	883	2	53	0	Community transmission	0
Sierra Leone	865	4	46	0	Community transmission	0

Reporting Country/ Territory/Area	Total confirmed cases	Total confirmed new cases	Total deaths	Total new deaths	Transmission classification ¹	Days since last reported case
Madagascar	826	55	6	0	Clusters of cases	0
Chad	790	12	66	1	Community transmission	0
Congo	611	7	20	0	Community transmission	0
Mauritania	530	0	23	0	Clusters of cases	1
United Republic of Tanzania	509	0	21	0	Community transmission	25
Cabo Verde	458	23	4	0	Clusters of cases	0
Uganda	458	0	0	0	Sporadic cases	1
Togo	443	1	13	0	Community transmission	0
Rwanda	377	7	1	0	Sporadic cases	0
Malawi	336	52	4	0	Clusters of cases	0
Mauritius	335	0	10	0	Clusters of cases	3
Liberia	296	8	27	0	Community transmission	0
São Tomé and Príncipe	295	0	10	0	Clusters of cases	6
Eswatini	293	8	3	1	Clusters of cases	0
Mozambique	254	0	2	0	Clusters of cases	1
Benin	243	11	3	0	Community transmission	0
Zimbabwe	178	0	4	0	Sporadic cases	1
Angola	86	0	4	0	Clusters of cases	1
Burundi	63	0	1	0	Clusters of cases	1
Comoros	62	0	2	0	Community transmission	1
Eritrea	39	0	0	0	Sporadic cases	44
Botswana	38	0	1	0	Clusters of cases	1
Gambia	25	0	1	0	Sporadic cases	10

Reporting Country/ Territory/Area	Total confirmed cases	Total confirmed new cases	Total deaths	Total new deaths	Transmission classification ⁱ	Days since last reported case
Namibia	25	1	0	0	Sporadic cases	0
Seychelles	11	0	0	0	Clusters of cases	56
Lesotho	2	0	0	0	Sporadic cases	10
Territoriesⁱⁱ						
Mayotte	1 934	63	24	1	Clusters of cases	0
Réunion	473	2	1	0	Clusters of cases	0
Americas						
United States of America	1 783 638	26 116	104 247	693	Community transmission	0
Brazil	514 849	16 409	29 314	480	Community transmission	0
Peru	164 476	8 805	4 506	135	Community transmission	0
Chile	105 159	5 471	1 113	59	Community transmission	0
Canada	91 351	835	7 305	213	Community transmission	0
Mexico	90 664	3152	9 930	151	Community transmission	0
Ecuador	39 098	0	3 358	0	Community transmission	1
Colombia	29 383	1 147	939	49	Community transmission	0
Dominican Republic	17 572	287	502	0	Community transmission	0
Argentina	16 851	637	541	11	Community transmission	0
Panama	13 463	445	336	6	Community transmission	0
Bolivia (Plurinational State of)	9 982	390	313	3	Community transmission	0
Honduras	5 202	108	212	11	Community transmission	0
Guatemala	5 087	348	108	6	Community transmission	0
El Salvador	2 582	65	46	0	Community transmission	0
Haiti	2 124	259	44	3	Community transmission	0
Cuba	2 083	38	83	0	Clusters of cases	0

Reporting Country/ Territory/Area	Total confirmed cases	Total confirmed new cases	Total deaths	Total new deaths	Transmission classification ⁱ	Days since last reported case
Venezuela (Bolivarian Republic of)	1 510	51	14	0	Community transmission	0
Costa Rica	1 056	9	10	0	Clusters of cases	0
Paraguay	995	9	11	0	Community transmission	0
Nicaragua	885	0	35	0	Community transmission	4
Uruguay	823	2	22	0	Clusters of cases	0
Jamaica	581	0	9	0	Clusters of cases	1
Guyana	153	1	12	0	Clusters of cases	0
Trinidad and Tobago	117	0	8	0	Sporadic cases	1
Bahamas	102	1	11	0	Clusters of cases	0
Barbados	92	0	7	0	Clusters of cases	8
Suriname	27	13	1	0	Sporadic cases	0
Saint Vincent and the Grenadines	26	0	0	0	Sporadic cases	1
Antigua and Barbuda	25	0	3	0	Clusters of cases	29
Grenada	23	0	0	0	Clusters of cases	6
Belize	18	0	2	0	Sporadic cases	48
Saint Lucia	18	0	0	0	Sporadic cases	28
Dominica	16	0	0	0	Clusters of cases	52
Saint Kitts and Nevis	15	0	0	0	Sporadic cases	42
Territoriesⁱⁱ						
Puerto Rico	3 873	97	136	0	Community transmission	0
French Guiana	499	22	1	0	Clusters of cases	0
Martinique	200	0	14	0	Clusters of cases	2
Guadeloupe	162	0	14	0	Clusters of cases	3
Cayman Islands	141	0	1	0	Clusters of cases	2

Reporting Country/ Territory/Area	Total confirmed cases	Total confirmed new cases	Total deaths	Total new deaths	Transmission classification ¹	Days since last reported case
Bermuda	140	0	9	0	Clusters of cases	3
Aruba	101	0	3	0	No cases	27
Sint Maarten	78	0	15	0	Sporadic cases	19
United States Virgin Islands	70	1	6	0	Clusters of cases	0
Saint Martin	41	0	3	0	Sporadic cases	2
Curaçao	20	0	1	0	Sporadic cases	4
Falkland Islands (Malvinas)	13	0	0	0	Clusters of cases	37
Turks and Caicos Islands	12	0	1	0	Sporadic cases	35
Montserrat	11	0	1	0	Sporadic cases	49
British Virgin Islands	8	0	1	0	Sporadic cases	17
Bonaire, Sint Eustatius and Saba	7	0	0	0	No cases	7
Saint Barthélemy	6	0	0	0	Sporadic cases	63
Anguilla	3	0	0	0	Sporadic cases	59
Saint Pierre and Miquelon	1	0	0	0	Sporadic cases	55
Eastern Mediterranean						
Iran (Islamic Republic of)	154 445	2 979	7 878	81	Community transmission	0
Saudi Arabia	87 142	1 881	525	22	Clusters of cases	0
Pakistan	76 398	3 938	1 621	78	Clusters of cases	0
Qatar	58 433	1523	40	2	Community transmission	0
United Arab Emirates	35 192	635	266	2	Pending	0
Kuwait	27 762	719	220	8	Clusters of cases	0
Egypt	26 384	1 399	1 005	46	Clusters of cases	0
Afghanistan	16 492	742	270	5	Clusters of cases	0
Oman	12 223	786	50	1	Clusters of cases	0

Reporting Country/ Territory/Area	Total confirmed cases	Total confirmed new cases	Total deaths	Total new deaths	Transmission classification ⁱ	Days since last reported case
Bahrain	11 871	473	19	0	Clusters of cases	0
Morocco	7 833	26	205	0	Clusters of cases	0
Iraq	6 868	429	215	10	Clusters of cases	0
Sudan	5 173	147	298	12	Community transmission	0
Djibouti	3 569	215	24	0	Clusters of cases	0
Somalia	2 023	47	79	1	Sporadic cases	0
Lebanon	1 233	13	27	0	Clusters of cases	0
Tunisia	1 084	7	48	0	Community transmission	0
Jordan	746	7	9	0	Clusters of cases	0
Yemen	358	31	85	4	Pending	0
Libya	168	12	5	0	Clusters of cases	0
Syrian Arab Republic	123	1	5	0	Community transmission	0
Territoriesⁱⁱ						
occupied Palestinian territory	628	1	5	0	Clusters of cases	0
Europe						
Russian Federation	423 741	8 863	5 037	182	Clusters of cases	0
The United Kingdom	276 336	1 570	39 045	556	Community transmission	0
Spain	240 010	209	29 858	813	Community transmission	0
Italy	233 197	178	33 475	60	Community transmission	0
Germany	182 028	213	8 522	11	Community transmission	0
Turkey	164 769	827	4 563	23	Community transmission	0
France	148 775	251	28 776	30	Community transmission	0
Belgium	58 517	136	9 486	19	Community transmission	0
Netherlands	46 545	103	5 962	6	Community transmission	0

Reporting Country/ Territory/Area	Total confirmed cases	Total confirmed new cases	Total deaths	Total new deaths	Transmission classification ¹	Days since last reported case
Belarus	43 403	847	240	5	Community transmission	0
Sweden	37 814	272	4 403	8	Community transmission	0
Portugal	32 700	200	1 424	14	Community transmission	0
Switzerland	30 788	9	1 656	0	Community transmission	0
Ireland	25 062	72	1 650	0	Community transmission	0
Ukraine	24 340	328	727	9	Community transmission	0
Poland	24 165	379	1 074	10	Community transmission	0
Romania	19 398	141	1 279	17	Community transmission	0
Israel	17 071	0	285	0	Pending	1
Austria	16 663	21	668	0	Community transmission	0
Denmark	11 699	30	576	2	Community transmission	0
Kazakhstan	11 571	263	41	0	Clusters of cases	0
Serbia	11 430	18	244	1	Pending	0
Armenia	10 009	517	158	19	Community transmission	0
Czechia	9 302	29	321	1	Clusters of cases	0
Norway	8 411	0	236	0	Clusters of cases	3
Republic of Moldova	8 360	109	307	12	Community transmission	0
Finland	6 885	26	320	0	Pending	0
Azerbaijan	5 662	168	68	5	Clusters of cases	0
Luxembourg	4 019	1	110	0	Clusters of cases	0
Tajikistan	4 013	83	47	0	Pending	0
Hungary	3 921	45	532	6	Community transmission	0
Uzbekistan	3 718	56	15	0	Clusters of cases	0
Greece	2 917	0	175	0	Clusters of cases	1

Reporting Country/ Territory/Area	Total confirmed cases	Total confirmed new cases	Total deaths	Total new deaths	Transmission classification ⁱ	Days since last reported case
Bosnia and Herzegovina	2 523	14	153	1	Community transmission	0
Bulgaria	2 513	0	144	4	Clusters of cases	2
North Macedonia	2 315	89	140	7	Clusters of cases	0
Croatia	2 246	0	103	0	Community transmission	2
Estonia	1 870	1	68	0	Pending	0
Kyrgyzstan	1 845	28	17	1	Clusters of cases	0
Iceland	1 806	0	10	0	Community transmission	2
Lithuania	1 678	3	70	0	Community transmission	0
Slovakia	1 522	0	28	0	Clusters of cases	1
Slovenia	1 483	10	108	0	Clusters of cases	0
Albania	1 164	21	33	0	Clusters of cases	0
Latvia	1 071	5	24	0	Clusters of cases	0
Cyprus	949	5	17	0	Clusters of cases	0
Georgia	796	2	12	0	Community transmission	0
Andorra	765	1	51	0	Community transmission	0
San Marino	687	0	42	0	Community transmission	4
Malta	619	3	9	2	Sporadic cases	0
Montenegro	324	0	9	0	Clusters of cases	27
Monaco	98	0	1	0	Sporadic cases	9
Liechtenstein	83	0	1	0	Pending	37
Holy See	12	0	0	0	Sporadic cases	26
Territoriesⁱⁱ						
Kosovo ^[1]	1 067	3	30	0	Community transmission	0
Isle of Man	336	0	24	0	Pending	11

Reporting Country/ Territory/Area	Total confirmed cases	Total confirmed new cases	Total deaths	Total new deaths	Transmission classification ¹	Days since last reported case
Jersey	308	0	29	0	Community transmission	4
Guernsey	252	0	13	0	Community transmission	30
Faroe Islands	187	0	0	0	Pending	39
Gibraltar	170	1	0	0	Clusters of cases	0
Greenland	13	0	0	0	Pending	4
South-East Asia						
India	198 706	8 171	5 598	204	Clusters of cases	0
Bangladesh	49 534	2 381	672	22	Community transmission	0
Indonesia	26 940	467	1 641	28	Community transmission	0
Thailand	3 083	1	58	1	Clusters of cases	0
Maldives	1 829	56	6	1	Clusters of cases	0
Nepal	1 811	239	8	0	Sporadic cases	0
Sri Lanka	1 643	10	11	1	Clusters of cases	0
Myanmar	228	4	6	0	Clusters of cases	0
Bhutan	47	4	0	0	Sporadic cases	0
Timor-Leste	24	0	0	0	Clusters of cases	39
Western Pacific						
China	84 597	9	4 645	0	Clusters of cases	0
Singapore	35 292	408	24	1	Clusters of cases	0
Philippines	18 638	552	960	3	Community transmission	0
Japan	16 930	46	894	2	Clusters of cases	0
Republic of Korea	11 541	38	272	1	Clusters of cases	0
Malaysia	7 857	38	115	0	Clusters of cases	0

Reporting Country/ Territory/Area	Total confirmed cases	Total confirmed new cases	Total deaths	Total new deaths	Transmission classification ⁱ	Days since last reported case
Australia	7 204	9	103	0	Clusters of cases	0
New Zealand	1 154	0	22	0	Clusters of cases	11
Viet Nam	328	0	0	0	Clusters of cases	2
Mongolia	185	6	0	0	Sporadic cases	0
Brunei Darussalam	141	0	2	0	Clusters of cases	25
Cambodia	125	0	0	0	Sporadic cases	3
Lao People's Democratic Republic	19	0	0	0	Sporadic cases	50
Fiji	18	0	0	0	Sporadic cases	42
Papua New Guinea	8	0	0	0	Sporadic cases	40
Territoriesⁱⁱ						
Guam	167	1	5	0	Clusters of cases	0
French Polynesia	60	0	0	0	Sporadic cases	27
Northern Mariana Islands (Commonwealth of the)	22	0	2	0	Pending	11
New Caledonia	19	0	0	0	Sporadic cases	4
Subtotal for all regions	6 193 792	113 198	376 307	4 242		
Other*	741	0	13	0	Not applicable	-
Grand total	6 194 533	113 198	376 320	4 242		

**See [Annex 1](#) for data, table and figure notes.

Technical guidance and other resources

- To view all technical guidance documents regarding COVID-19, please go to [this webpage](#).
- Updates from WHO regional offices
 - [WHO AFRO](#)
 - [WHO PAHO](#)
 - [WHO EMRO](#)
 - [WHO SEARO](#)
 - [WHO EURO](#)
 - [WHO WPRO](#)
- [Research and Development](#)
- [Online courses on COVID-19](#) and in [additional national languages](#)
- [The Strategic Preparedness and Response Plan](#) (SPRP) outlining the support the international community can provide to all countries to prepare and respond to the virus
- [WHO Health Emergency dashboard](#)
- [Weekly COVID-19 Operations Updates](#)

Recommendations and advice for the public

- [Protect yourself](#)
- [Questions and answers](#)
- [Travel advice](#)
- [EPI-WIN](#): tailored information for individuals, organizations and communities

Case definitions

WHO periodically updates the [Global Surveillance for human infection with coronavirus disease \(COVID-19\)](#) document which includes surveillance definitions.

Definition of COVID-19 death

COVID-19 death is defined for surveillance purposes as a death resulting from a clinically compatible illness in a probable or confirmed COVID-19 case, unless there is a clear alternative cause of death that cannot be related to COVID-19 disease (e.g. trauma). There should be no period of complete recovery between the illness and death.

Further guidance for certification and classification (coding) of COVID-19 as cause of death is available [here](#).

Annex 1: Data, table and figure notes

Caution must be taken when interpreting all data presented. Differences are to be expected between information products published by WHO, national public health authorities, and other sources using different inclusion criteria and different data cut-off times. While steps are taken to ensure accuracy and reliability, all data are subject to continuous verification and change. Case detection, definitions, testing strategies, reporting practice, and lag times differ between countries/territories/areas. These factors, amongst others, influence the counts presented, with variable underestimation of true case and death counts, and variable delays to reflecting these data at global level.

The designations employed, and the presentation of these materials do not imply the expression of any opinion whatsoever on the part of WHO concerning the legal status of any country, territory or area or of its authorities, or concerning the delimitation of its frontiers or boundaries. Dotted and dashed lines on maps represent approximate border lines for which there may not yet be full agreement. Countries, territories and areas are arranged under the administering WHO region.

The mention of specific companies or of certain manufacturers' products does not imply that they are endorsed or recommended by WHO in preference to others of a similar nature that are not mentioned. Errors and omissions excepted, the names of proprietary products are distinguished by initial capital letters.

[1] All references to Kosovo should be understood to be in the context of the United Nations Security Council resolution 1244 (1999). In the map, number of cases of Serbia and Kosovo (UNSCR 1244, 1999) have been aggregated for visualization purposes.

Counts reflect laboratory-confirmed cases and deaths, based on [WHO case definitions](#), unless stated otherwise (see Country, territory, or area-specific updates and errata), and include both domestic and repatriated cases.

Other*: includes cases reported from international conveyances.

Due to the recent trend of countries conducting data reconciliation exercises which remove large numbers of cases or deaths from their total counts, WHO will now display such data as negative numbers in the "new cases" / "new deaths" columns as appropriate. This will aid readers in identifying when such adjustments occur. When additional details become available that allow the subtractions to be suitably apportioned to previous days, graphics will be updated accordingly. Prior situation reports will not be edited; see covid19.who.int for the most up-to-date data.

Additional table notes

ⁱ Transmission classification is based on a process of country/territory/area self-reporting. Classifications are reviewed on a weekly basis, may be revised as new information becomes available, and are based on the highest category reported. Differing degrees of transmission may be present within countries/territories/areas.

Categories:

- No cases: with no confirmed cases
- Sporadic cases: with one or more cases, imported or locally detected.
- Clusters of cases: experiencing cases, clustered in time, geographic location and/or by common exposures.
- Community transmission: experiencing larger outbreaks of local transmission defined through an assessment of factors including, but not limited to: large numbers of cases not linkable to transmission chains; large numbers of cases from sentinel lab surveillance; and/or multiple unrelated clusters in several areas of the country/territory/area.
- Pending: transmission classification has not been reported to WHO.

ⁱⁱ “Territories” include territories, areas, overseas dependencies and other jurisdictions of similar status.

Country, territory, or area-specific updates and errata

- **Update 2 June 2020, United States:** Reporting systems were adjusted to provide more timely updates. Prior to 1 June, case and death counts reflected data published by the US Centers for Disease Control from two days prior. From 2 June onward, data reflect counts published one day prior. Cumulative counts for 31 May (not otherwise published) included 1 757 522 cases and 103 554 deaths. Data were adjusted retrospectively to better align with national authorities and are reflected on the [WHO COVID-19 Dashboard](#).