

Corona Virus Disease (COVID-19) Situational Report

Report No.11 Date of Issue: 10th April, 2020, 6pm GMT

HIGHLIGHTS

- **One new** confirmed COVID-19 case was reported in the last 24 hours
- Cumulative number of confirmed COVID-19 cases reported as at 10th April 2020 is **eight**
- Partial lockdown for 14 days begins on 11th April 2020 with ban of non-essential inter-district travel

8 Confirmed Cases

1 New Case

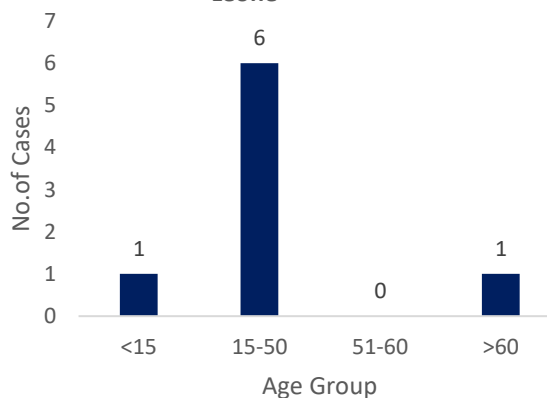
0 Deaths

EPIDEMIOLOGY & SURVEILLANCE

Summary of COVID-19 Cases in Sierra Leone as at 10th April, 2020

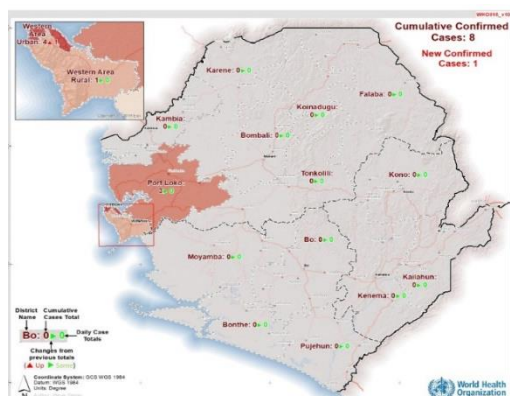
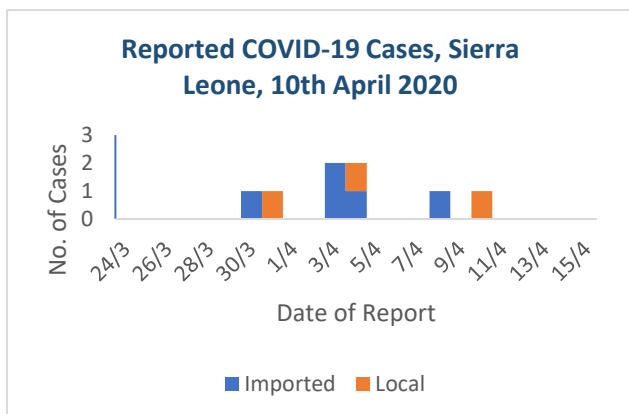
- Cumulatively, there are **eight** confirmed cases as at 10th April, 2020, 6pm.
- **One new** case reported in the last 24 hours.
- Six cases are aged **15-50** years
- Median age of the cases is 38 years (Range 14-64 years).
- Gender: 4 males, 4 females

Age Distribution COVID-19 Cases, Sierra Leone



Summary of COVID-19 Cases in Sierra Leone as at 10th April, 2020

| District | Cases | | Deaths | | Recovered Cases |
|--------------------|-----------|-------------------------|------------|--------------------------|-----------------|
| | New Cases | Cumulative No. of Cases | New Deaths | Cumulative No. of Deaths | |
| Western Area Urban | 1 | 4 | 0 | 0 | 0 |
| Western Area Rural | 0 | 1 | 0 | 0 | 0 |
| Port Loko | 0 | 3 | 0 | 0 | 0 |
| Total | 1 | 8 | 0 | 0 | 0 |



Distribution of COVID-19 Cases in Sierra Leone as at 10th April 2020

Distribution of COVID-19 Cases, Sierra Leone 2020 as at 10th April 2020

- The first case of COVID-19 in Sierra Leone was confirmed on **30th March 2020**
- **Five** out of eight confirmed COVID cases have a **history of travel** to countries with local transmission of COVID-19
- **Three** out of 16 districts have reported confirmed COVID-19 cases
 - Western Area Urban
 - Western Area Rural
 - Port Loko
- **Half** of confirmed cases are from Western Area Urban District

| Technical Areas | Variable | No |
|--|--|------------|
| Contact Tracing | Cumulative no of contacts on follow up | 343 |
| | No. of contacts monitored in the last 24 hours | 343 (100%) |
| Quarantine | Total No. Currently under quarantine | 445 |
| | Home Quarantine | 259 |
| | Institutional Quarantine | 186 |
| Laboratory Testing | Laboratory tests done in last 24 hours | 59 |
| | Cumulative number of tests | 466 |
| | No of positive tests (% positivity rate) | 8 (1.7 %) |
| Event Based Surveillance (last 24 hrs) | Total Alerts Received through 117 System | 94 |
| | No of COVID related alerts | 3 |
| | No. of COVID related alerts investigated | 3 |
| | No. of COVID related alerts discarded | 0 |

This Situation Report was developed jointly by:

Government of Sierra Leone & World Health Organization, Sierra Leone

For any comments or inquiries contact:

eocnsr2020@gmail.com